

DRAWING NUMBER

001803

PLAN HOLD CORPORATION • IRVINE, CALIFORNIA
REORDER BY NUMBER 075AR

DRAWING NUMBER

001803

PLAN HOLD CORPORATION • IRVINE, CALIFORNIA
REORDER BY NUMBER 075AR

DRAWING NUMBER

001803

PLAN HOLD CORPORATION • IRVINE, CALIFORNIA
REORDER BY NUMBER 075AR

DRAWING NUMBER

001803

PLAN HOLD CORPORATION • IRVINE, CALIFORNIA
REORDER BY NUMBER 075AR

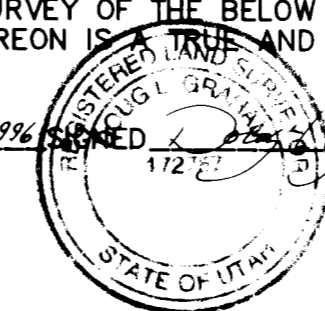
LOTS 23 AND 24 OAK VIEW ESTATES SUBDIVISION

PART OF THE N.E. 1/4 OF SEC. 10, T.5N., R.1W., S.L.B. AND M.
IN OGDEN CITY
SEPTEMBER, 1996

•SURVEYOR'S CERTIFICATE•

I, DOUG L. GRAHAM, A REGISTERED LAND SURVEYOR AS PRESCRIBED BY THE LAWS OF THE STATE OF UTAH AND HOLDING LICENSE NUMBER 172757 DO HEREBY CERTIFY THAT I MADE A SURVEY OF THE BELOW DESCRIBED PROPERTY AND THE PLAT HEREON IS A TRUE AND CORRECT REPRESENTATION OF SAID SURVEY.

DATE: OCT 24 1996 SIGNED: Doug L. Graham

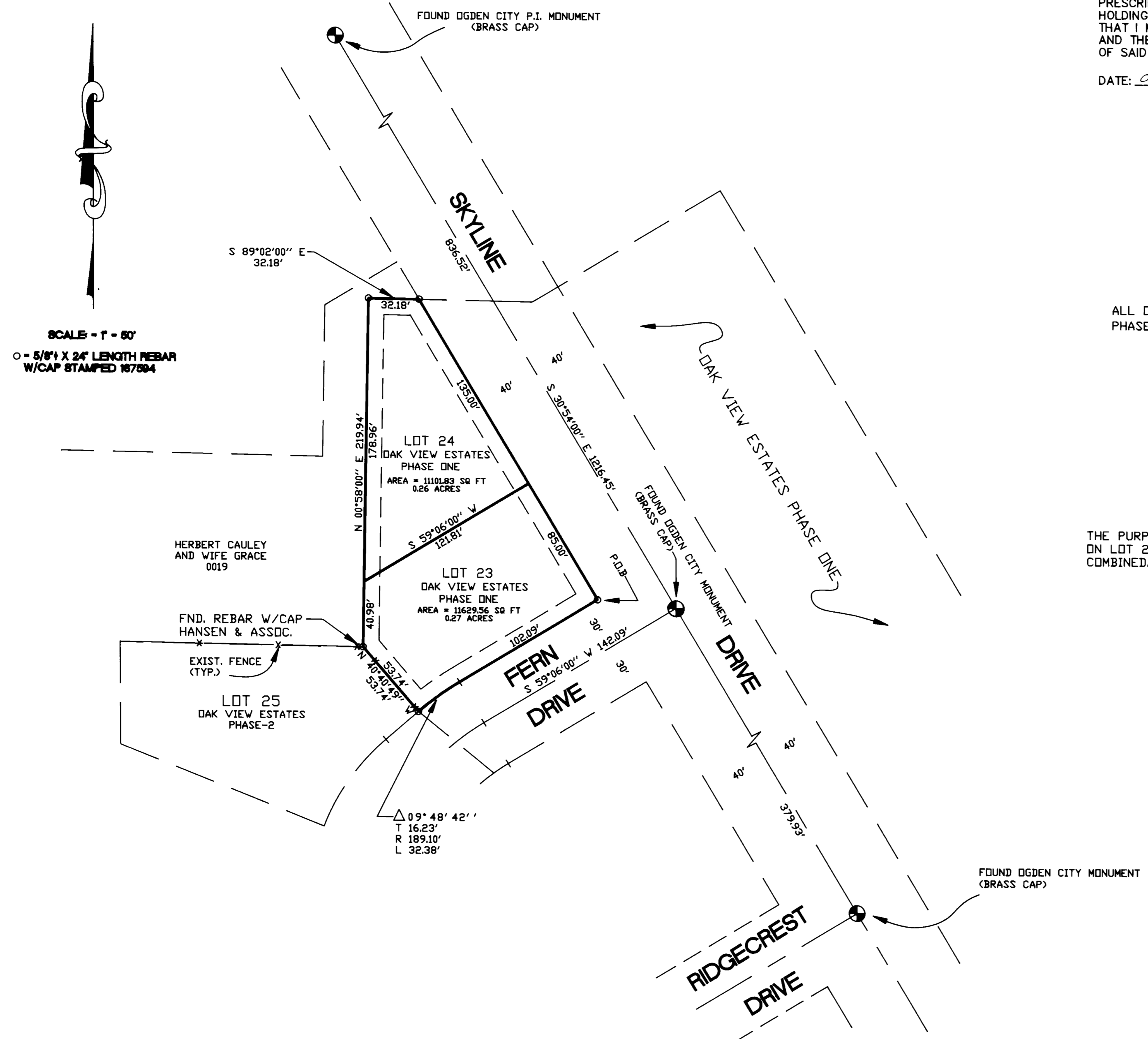


•BOUNDARY DESCRIPTION•

ALL OF LOTS 23 AND 24, OAK VIEW ESTATES SUBDIVISION PHASE ONE.

•NARRATIVE•

THE PURPOSE OF THIS SURVEY WAS TO SET THE PROPERTY CORNERS ON LOT 23 AND 24, OAK VIEW ESTATES SUBDIVISION PHASE ONE, COMBINED.



RECEIVED

DEC 03 1997

Weber County Surveyor



LANDMARK SURVEYING
A COMPLETE SURVEYING SERVICE

2485 GRANT AVE. SUITE 300-B OGDEN, UT. 84401
PH. 827-4014

CLIENT: JOE BECHTEL

LOCATION: PART OF NE 1/4 SEC. 10, T.5N, R.1W, S.L.B.&M.

SURVEYED: OCT 18, 1996

001803

001803