

DRAWING NUMBER

001805

PLAN HOLD CORPORATION • IRVINE, CALIFORNIA
REORDER BY NUMBER 075AR

DRAWING NUMBER

001805

PLAN HOLD CORPORATION • IRVINE, CALIFORNIA
REORDER BY NUMBER 075AR

DRAWING NUMBER

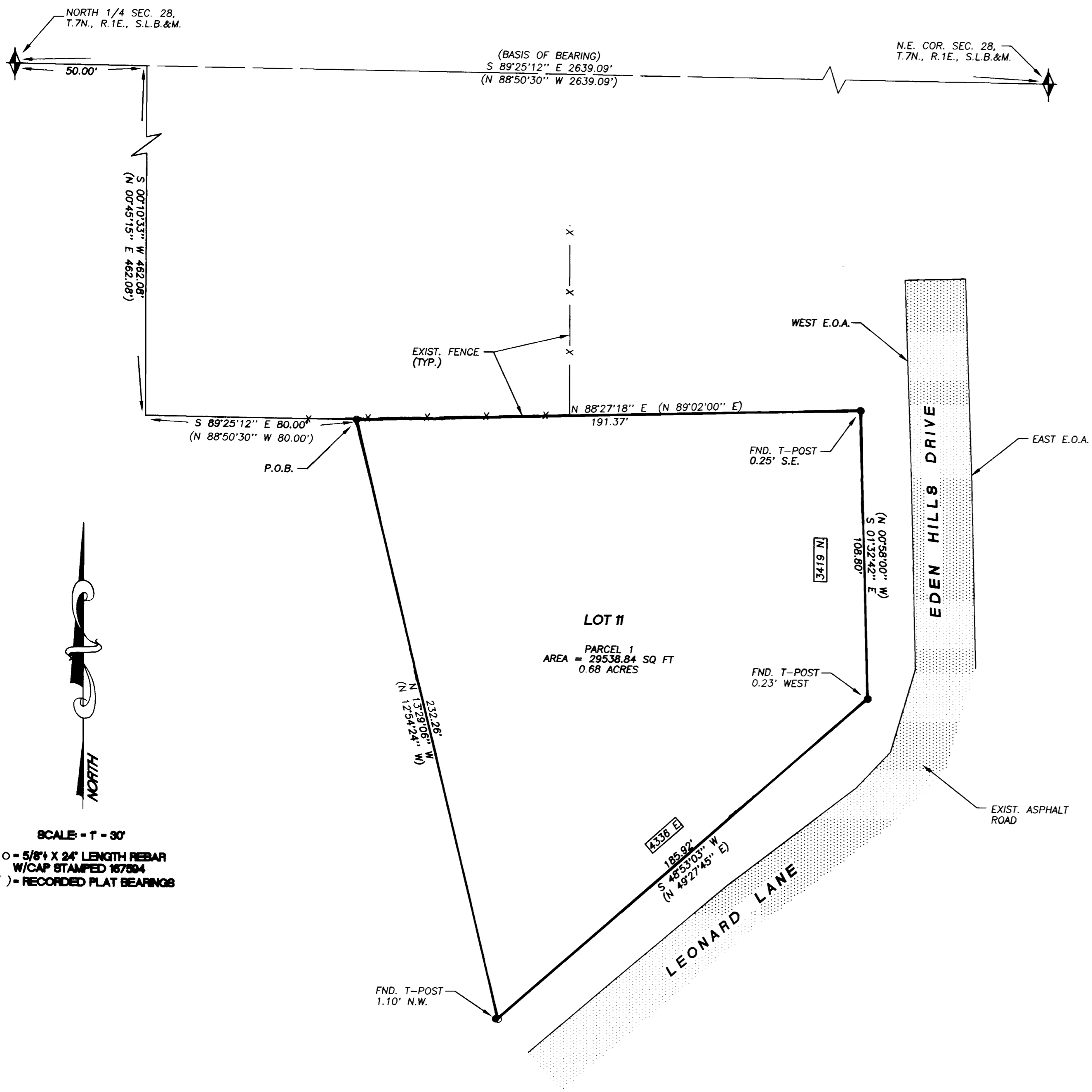
001805

PLAN HOLD CORPORATION • IRVINE, CALIFORNIA
REORDER BY NUMBER 075AR

DRAWING NUMBER

001805

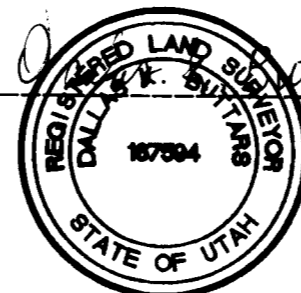
PLAN HOLD CORPORATION • IRVINE, CALIFORNIA
REORDER BY NUMBER 075AR



•SURVEYOR'S CERTIFICATE•

I, DALLAS K. BUTTARS, A PROFESSIONAL LICENSED LAND SURVEYOR AS PRESCRIBED BY THE LAWS OF THE STATE OF UTAH AND HOLDING LICENSE NUMBER 167594, DO HEREBY CERTIFY THAT I MADE A SURVEY OF THE BELOW DESCRIBED PROPERTY AND THE PLAT HEREON IS A TRUE AND CORRECT REPRESENTATION OF SAID SURVEY.

DATE: 5-30-97 SIGNED: [Signature]



•BOUNDARY DESCRIPTION•

ALL OF LOT 11, EDEN HILLS SUBDIVISION, WEBER COUNTY, UTAH, ACCORDING TO THE OFFICIAL PLAT.

•NARRATIVE•

THE PURPOSE OF THIS SURVEY WAS TO ESTABLISH THE BOUNDARY OF LOT 11, EDEN HILLS SUBDIVISION. ALL BEARINGS ROTATED TO WEBER COUNTY, STATE PLANE GRID BEARING SYSTEM.

RECEIVED

DEC 03 1997

Weber County Surveyor

LS LANDMARK SURVEYING
A COMPLETE SURVEYING SERVICE
2485 GRANT AVE. SUITE 300 OGDEN, UTAH 84401
PH: 627-4014

CLIENT: PETE BEALBA

LOCATION: ALL OF LOT 11, EDEN HILLS SUBDIVISION

SURVEYED: 5-30-97

REVISIONS:	DRAWN BY: <u>[Signature]</u>
	CHECKED BY: D. BUTTARS
	DATE: 5-30-97
	FILE: 1869ROFS.DWG

001805

001805