

DRAWING NUMBER
001806

PLAN HOLD CORPORATION • IRVINE, CALIFORNIA
REORDER BY NUMBER 075AR

DRAWING NUMBER
001806

PLAN HOLD CORPORATION • IRVINE, CALIFORNIA
REORDER BY NUMBER 075AR

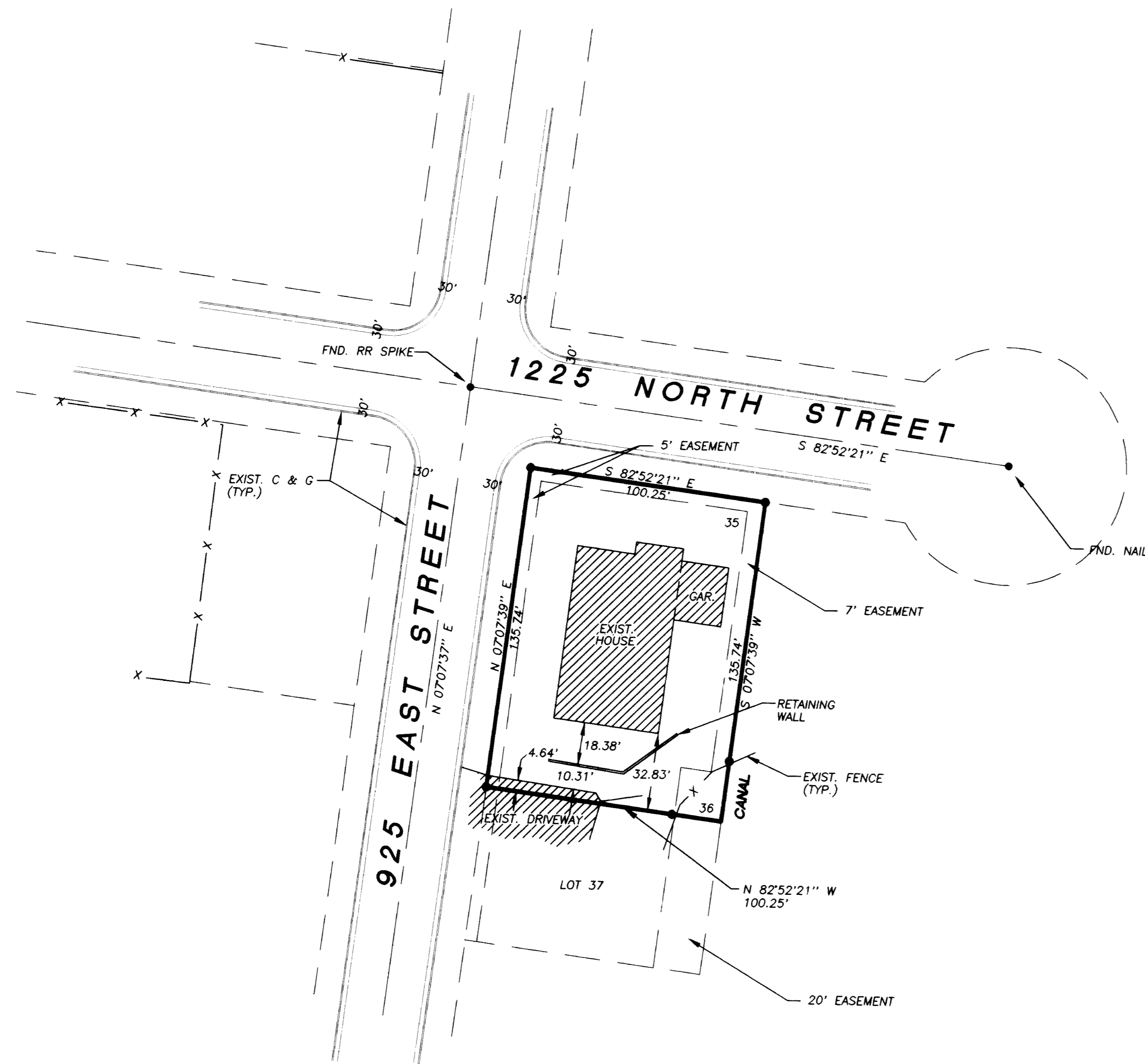
DRAWING NUMBER
001806

PLAN HOLD CORPORATION • IRVINE, CALIFORNIA
REORDER BY NUMBER 075AR

DRAWING NUMBER
001806

PLAN HOLD CORPORATION • IRVINE, CALIFORNIA
REORDER BY NUMBER 075AR

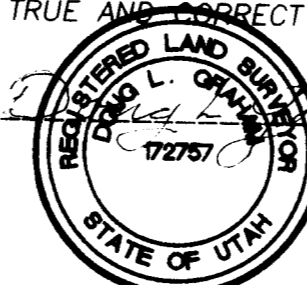
SCALE = 1" = 40'
○ = 5/8" X 24" LENGTH REBAR
W/CAP STAMPED 167504



•SURVEYOR'S CERTIFICATE•

I, DOUG L. GRAHAM, A PROFESSIONAL LICENSED LAND SURVEYOR AS PRESCRIBED BY THE LAWS OF THE STATE OF UTAH AND HOLDING LICENSE NUMBER 172757, DO HEREBY CERTIFY THAT I MADE A SURVEY OF THE BELOW DESCRIBED PROPERTY AND THE PLAT HEREON IS A TRUE AND CORRECT REPRESENTATION OF SAID SURVEY.

DATE: JUNE 27, 1997 SIGNED: [Signature]



•BOUNDARY DESCRIPTION•

ALL OF LOTS 35 AND 36 MEADOWLARK MEADOWS SUBDIVISION PHASE-2

•NARRATIVE•

THE PURPOSE OF THIS SURVEY WAS TO ESTABLISH THE CORNERS OF 2 SUBDIVISION LOTS COMBINED INTO ONE BUILDING LOT AND DETERMINE THE EXTENT OF ENCROACHMENT BY A CONCRETE DRIVEWAY ON THE SOUTH LINE. THE ENTIRE AREA LACKS STREET MONUMENTATION AND EXISTING IMPROVEMENTS WERE USED TO DETERMINE THE VALIDITY OF THE FOUND PK NAIL AND INTERSECTION RAILROAD SPIKE. NO OTHER EVIDENCE OF PREVIOUS SURVEY WAS LOCATED BUT THE RELATIONSHIP OF THE FOUND POINTS TO THE IMPROVEMENTS WAS REASONABLE AND USED TO ESTABLISH CORNERS AS SHOWN. BASIS OF BEARING IS OGDEN CITY (SUBDIVISION PLAT) BEARING.

RECEIVED

DEC 03 1997

Weber County Surveyor

LS LANDMARK SURVEYING
A COMPLETE SURVEYING SERVICE
2485 GRANT AVE. SUITE 300 OGDEN, UTAH 84401
PH. 827-4004
CLIENT: LYNN MAYBERRY
LOCATION: PART OF SEC. 4, T.6N., R.1W., S.L.B.&M.
SURVEYED:

REVISIONS:	DRAWN BY: <u>[Signature]</u>
	CHECKED BY: D. GRAHAM
	DATE: 6-24-97
	FILE: 1880RFS.DWG

001806

001806