

DRAWING NUMBER

001807

PLAN HOLD CORPORATION • IRVINE, CALIFORNIA
REORDER BY NUMBER 075AR

DRAWING NUMBER

001807

PLAN HOLD CORPORATION • IRVINE, CALIFORNIA
REORDER BY NUMBER 075AR

DRAWING NUMBER

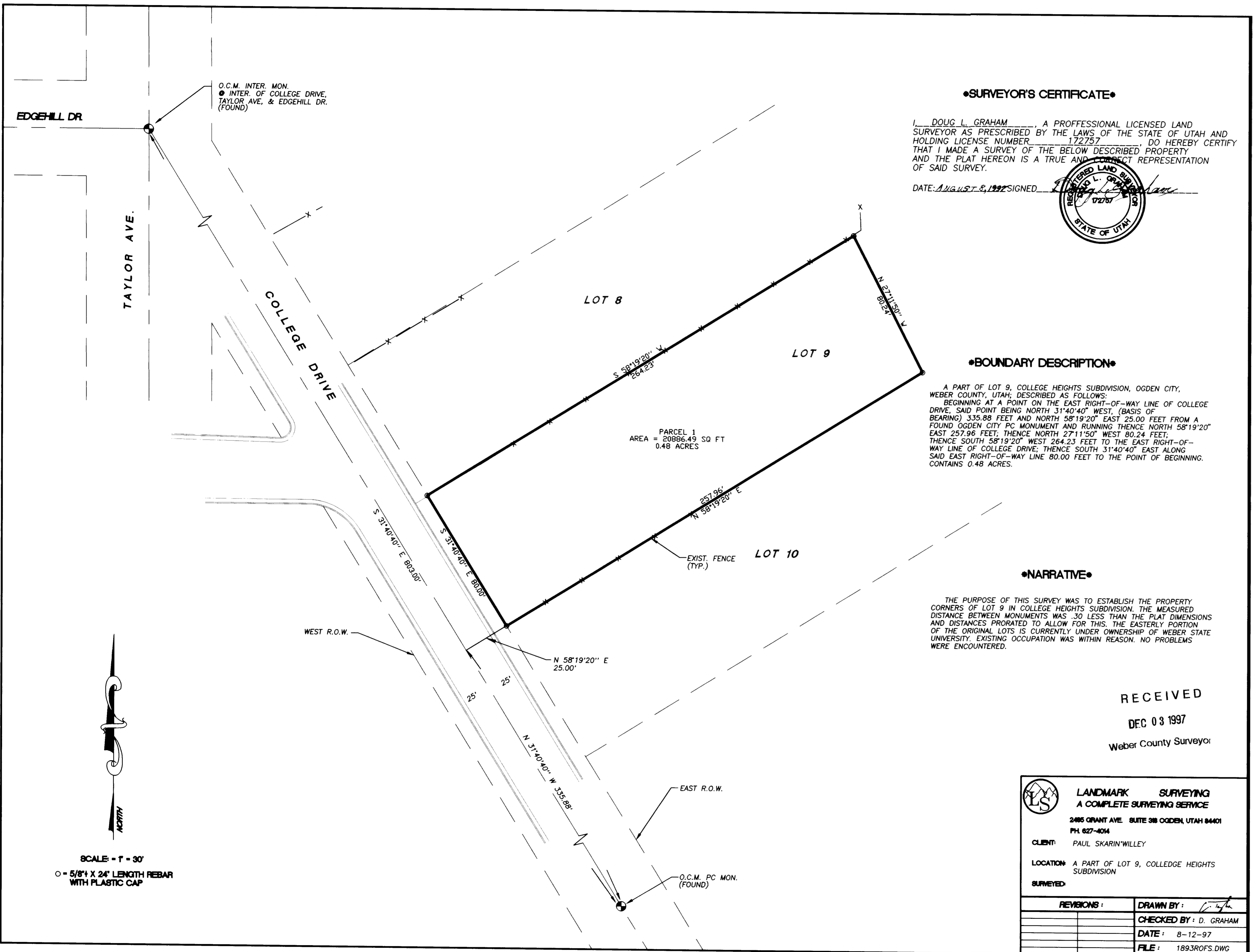
001807

PLAN HOLD CORPORATION • IRVINE, CALIFORNIA
REORDER BY NUMBER 075AR

DRAWING NUMBER

001807

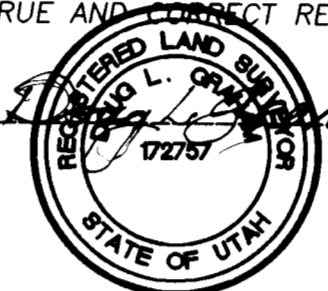
PLAN HOLD CORPORATION • IRVINE, CALIFORNIA
REORDER BY NUMBER 075AR



•SURVEYOR'S CERTIFICATE•

I, DOUG L. GRAHAM, A PROFESSIONAL LICENSED LAND SURVEYOR AS PRESCRIBED BY THE LAWS OF THE STATE OF UTAH AND HOLDING LICENSE NUMBER 172757, DO HEREBY CERTIFY THAT I MADE A SURVEY OF THE BELOW DESCRIBED PROPERTY AND THE PLAT HEREON IS A TRUE AND CORRECT REPRESENTATION OF SAID SURVEY.

DATE: AUGUST 8, 1997 SIGNED: [Signature]



•BOUNDARY DESCRIPTION•

A PART OF LOT 9, COLLEGE HEIGHTS SUBDIVISION, OGDEN CITY, WEBER COUNTY, UTAH; DESCRIBED AS FOLLOWS: BEGINNING AT A POINT ON THE EAST RIGHT-OF-WAY LINE OF COLLEGE DRIVE, SAID POINT BEING NORTH 31°40'40" WEST, (BASIS OF BEARING) 335.88 FEET AND NORTH 58°19'20" EAST 25.00 FEET FROM A FOUND OGDEN CITY PC MONUMENT AND RUNNING THENCE NORTH 58°19'20" EAST 257.96 FEET; THENCE NORTH 27°11'50" WEST 80.24 FEET; THENCE SOUTH 58°19'20" WEST 264.23 FEET TO THE EAST RIGHT-OF-WAY LINE OF COLLEGE DRIVE; THENCE SOUTH 31°40'40" EAST ALONG SAID EAST RIGHT-OF-WAY LINE 80.00 FEET TO THE POINT OF BEGINNING. CONTAINS 0.48 ACRES.

•NARRATIVE•

THE PURPOSE OF THIS SURVEY WAS TO ESTABLISH THE PROPERTY CORNERS OF LOT 9 IN COLLEGE HEIGHTS SUBDIVISION. THE MEASURED DISTANCE BETWEEN MONUMENTS WAS .30 LESS THAN THE PLAT DIMENSIONS AND DISTANCES PRORATED TO ALLOW FOR THIS. THE EASTERLY PORTION OF THE ORIGINAL LOTS IS CURRENTLY UNDER OWNERSHIP OF WEBER STATE UNIVERSITY. EXISTING OCCUPATION WAS WITHIN REASON. NO PROBLEMS WERE ENCOUNTERED.

RECEIVED

DEC 03 1997

Weber County Surveyor

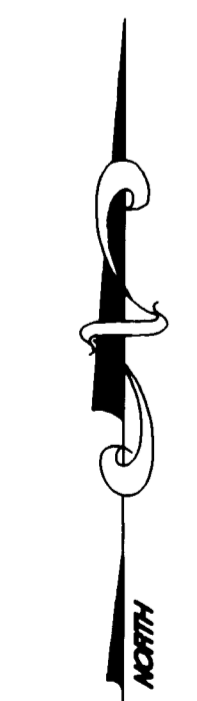
LANDMARK SURVEYING
A COMPLETE SURVEYING SERVICE
2485 GRANT AVE. SUITE 308 OGDEN, UTAH 84401
PH. 827-4014

CLIENT: PAUL SKARIN/WILLEY

LOCATION: A PART OF LOT 9, COLLEGE HEIGHTS SUBDIVISION

SURVEYED:

REVISIONS:	DRAWN BY: <u>[Signature]</u>
	CHECKED BY: D. GRAHAM
	DATE: 8-12-97
	FILE: 1893ROFS.DWG



SCALE = 1" = 30'

○ = 5/8" X 24" LENGTH REBAR WITH PLASTIC CAP

001807

001807