

001827

001827

001827

001827

•BOUNDARY DESCRIPTION•
 ALL OF LOTS 2 AND 3 OF SOUTH HARRISON COMMERCIAL DEVELOPMENT,
 OGDEN CITY, WEBER COUNTY, UTAH, AS RECORDED IN BOOK 39 PAGE 75 OF OFFICIAL
 RECORDS, WEBER COUNTY RECORDERS OFFICE.

•BASIS OF BEARINGS•
 THE BASIS OF BEARINGS FOR THIS SURVEY IS THE
 UTAH COORDINATE SYSTEM 1927 NORTH ZONE, AS
 DETERMINED LOCALLY BY THE WEST LINE OF SEC. 10,
 T. 5N., R. 1W., S.L.B. & M. U.S. SURVEY, SHOWN HEREIN
 AS N00°49'46"E BETWEEN THE SW COR. AND THE
 NW COR. OF SAID SEC. 10.

•EASEMENTS•
 A UTILITY & DRAINAGE EASEMENT
 B 31' ACCESS/CROSS ACCESS
 AND UTILITY EASEMENT
 C 24' CROSS ACCESS EASEMENT

NOTE:
 DIMENSIONS IN PARENTHESES ARE
 FROM RECORDED PLAT

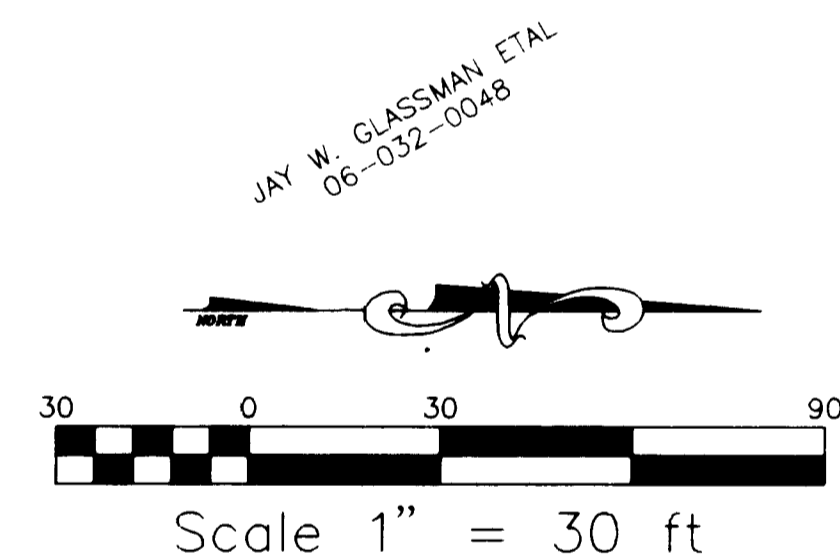
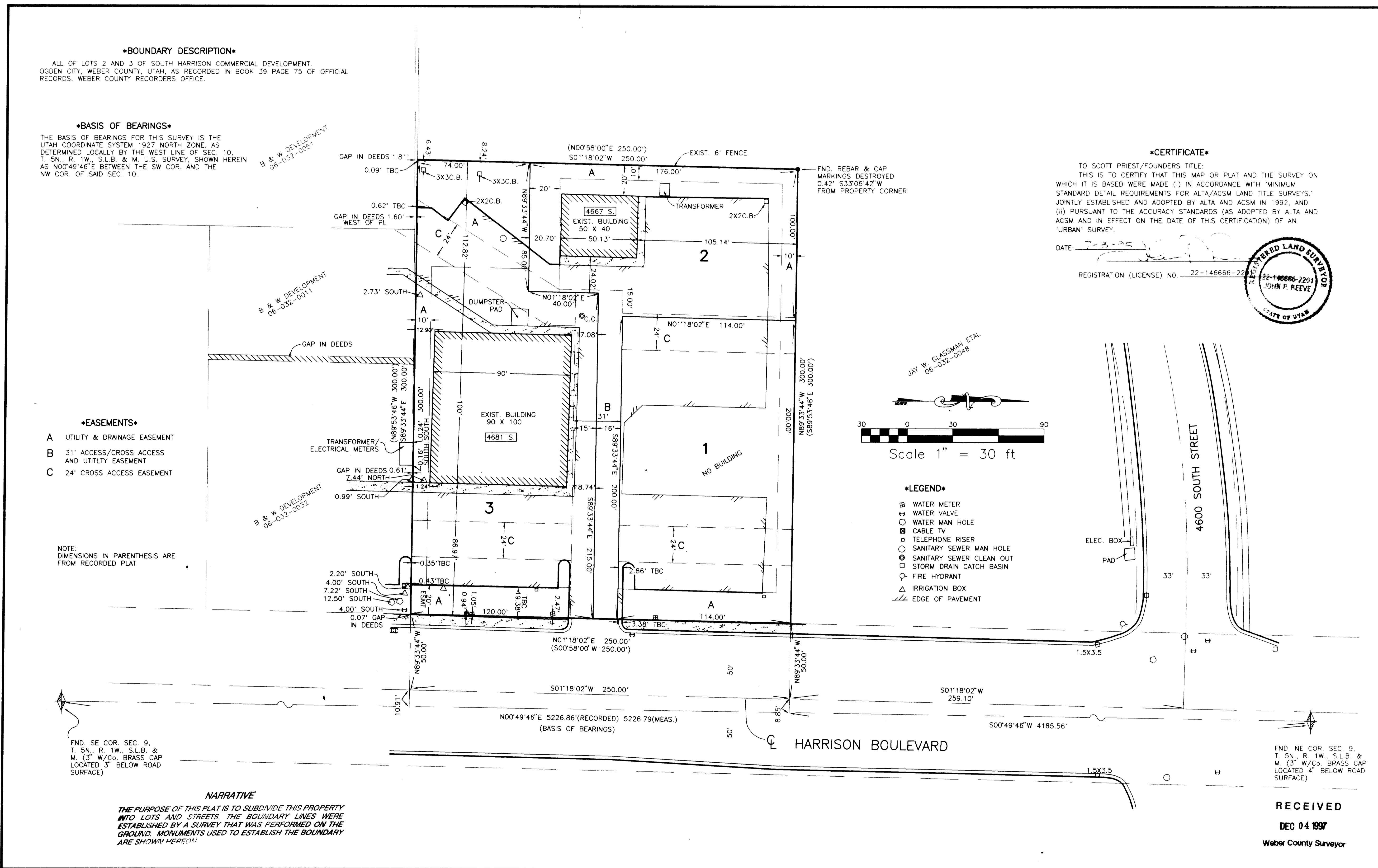
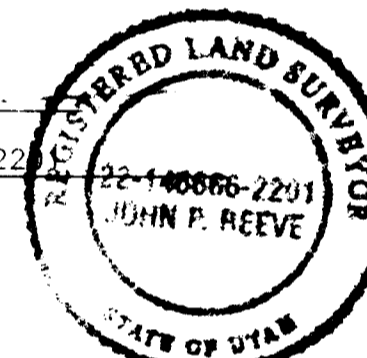
FND. SE COR. SEC. 9,
 T. 5N., R. 1W., S.L.B. &
 M. (3" W/Co. BRASS CAP
 LOCATED 3" BELOW ROAD
 SURFACE)

NARRATIVE

THE PURPOSE OF THIS PLAT IS TO SUBDIVIDE THIS PROPERTY
 INTO LOTS AND STREETS. THE BOUNDARY LINES WERE
 ESTABLISHED BY A SURVEY THAT WAS PERFORMED ON THE
 GROUND. MONUMENTS USED TO ESTABLISH THE BOUNDARY
 ARE SHOWN HEREON.

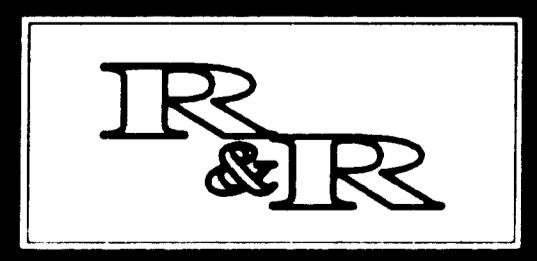
•CERTIFICATE•
 TO SCOTT PRIEST/FOUNDERS TITLE:
 THIS IS TO CERTIFY THAT THIS MAP OR PLAT AND THE SURVEY ON
 WHICH IT IS BASED WERE MADE (i) IN ACCORDANCE WITH "MINIMUM
 STANDARD DETAIL REQUIREMENTS FOR ALTA/ACSM LAND TITLE SURVEYS,"
 JOINTLY ESTABLISHED AND ADOPTED BY ALTA AND ACSM IN 1992, AND
 (ii) PURSUANT TO THE ACCURACY STANDARDS (AS ADOPTED BY ALTA AND
 ACSM AND IN EFFECT ON THE DATE OF THIS CERTIFICATION) OF AN
 "URBAN" SURVEY.

DATE: _____
 REGISTRATION (LICENSE) NO. 22-146666-22



- LEGEND•**
- ⊕ WATER METER
 - ⊕ WATER VALVE
 - WATER MAN HOLE
 - ⊕ CABLE TV
 - TELEPHONE RISER
 - SANITARY SEWER MAN HOLE
 - SANITARY SEWER CLEAN OUT
 - STORM DRAIN CATCH BASIN
 - FIRE HYDRANT
 - △ IRRIGATION BOX
 - ▬▬▬ EDGE OF PAVEMENT

RECEIVED
 DEC 04 1997
 Weber County Surveyor



REVISIONS	DATE	BY	CHKD.
1			
2			
3			

PROJECT NO. 1386.02
 DATE 6-22-95
 SCALE 1" = 30'

REEVE & REEVE, INC
 CIVIL AND ENVIRONMENTAL ENGINEERING
 LAND PLANNING AND SITE DESIGN
 LAND SURVEYING
 3670 QUINCY AVE., OGDEN, UTAH, 84403 621-3100

ALTA/ACSM LAND TITLE SURVEY
 URBAN SURVEY
 COMPLETED JUNE 22, 1995

LOTS 2 & 3 OF SOUTH HARRISON
 COMMERCIAL DEVELOPMENT

SHEET	1
SHEETS	1

001827

001827