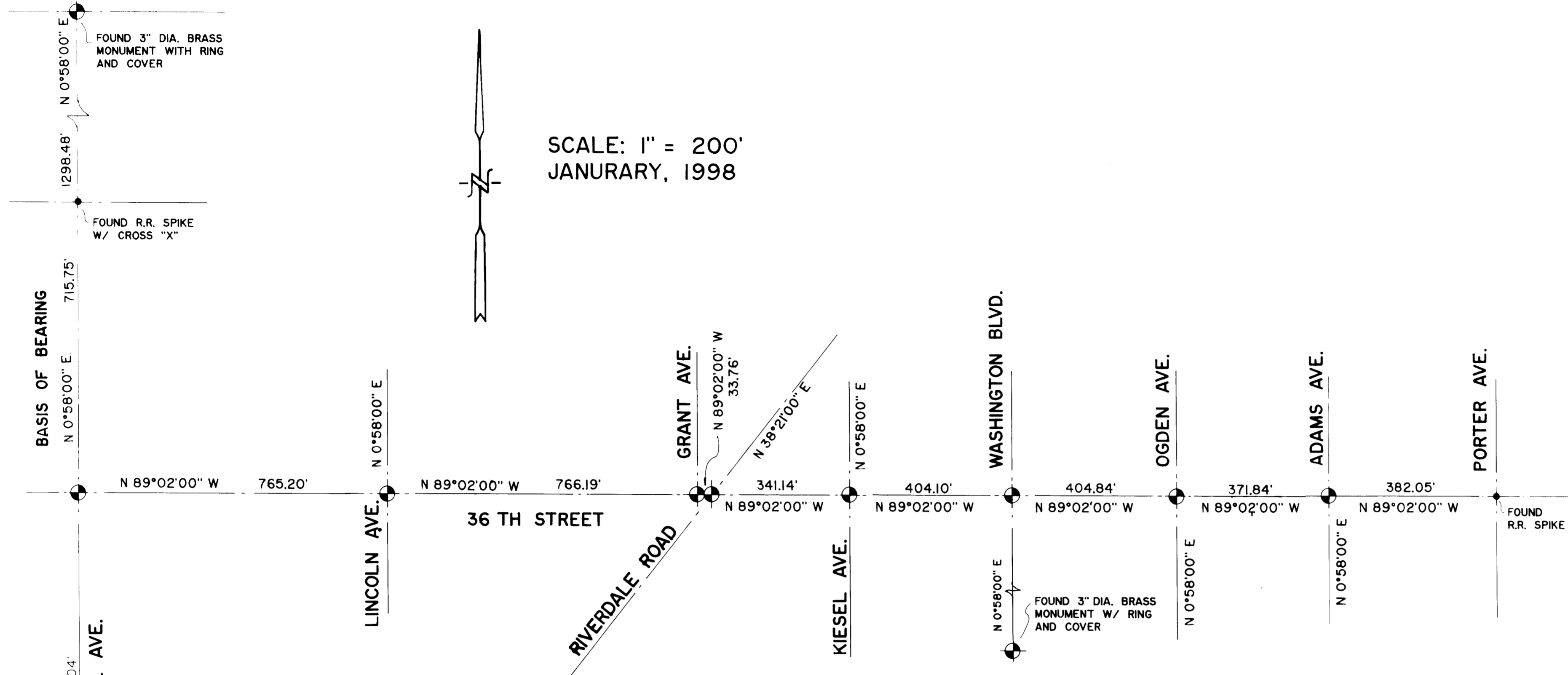


MUNSEN ENGINEERING CO. N-105985



NOTES:

- 1. - ALL MONUMENTS NOT LABELED ARE NEW 3" DIA. BRASS O.C.S. MONUMENTS WITH RING AND COVER.
- 2. - THE MONUMENT AT LINCOLN HAS BEEN PLACED IN THE SAME LOCATION AS THE ORIGINAL MONUMENT FOUND AT THE START OF THIS PROJECT.
- 3. - THE MONUMENTS LABELED WERE LOCATED PRIOR TO THE BEGINNING OF THE PROJECT AND NOT DISTURBED.
- 4. - THERE WERE NO OTHER MONUMENTS FOUND TO THE NORTH OR SOUTH OF 36 TH STREET UNLESS SHOWN HEREON.

LOCATION

BEING A PART OF SECTION 5, T.5N, R.1W., S.L.B.&M. IN OGDEN CITY, WEBER COUNTY, UTAH.

NARRATIVE

PURPOSE OF SURVEY
TO SET THE MONUMENTS FOR THE 36 TH STREET RENOVATION PROJECT STP-3356(1) 0

BASIS OF ESTABLISHMENT

OUR INSTRUMENT WAS SET AT THE MONUMENT ON THE CENTERLINE OF WALL AVE. AND 1047.04' SOUTH OF 36 TH STREET AND THE R.R. SPIKE AND 3" BRASS MONUMENT TO THE NORTH ON THE CENTERLINE OF WALL AVE WERE SITED AS OUR BASIS OF BEARING. THE MONUMENT AT WALL AND 36 TH STREET WAS ESTABLISHED AND THE R.R. SPIKE VERIFIED FROM THAT POINT. WE THEN SET THE MONUMENTS SHOWN ON 36 TH STREET. WE SET OUR INSTRUMENT ON WASHINGTON AND 36 TH STREET AND THE BEARING TO THE EXISTING MON. TO THE SOUTH AS SHOWN WAS FOUND TO BE CORRECT.

FOUND MONUMENTS

FOUND MONUMENTS INCLUDE THE 2 - 3" DIA. BRASS MONUMENTS AND R.R. SPIKE ON THE CENTERLINE OF WALL AVE. AS SHOWN. ALSO THE R.R. SPIKE AT PORTER AND 36 TH STREET, ALSO THE 3" DIA. BRASS MONUMENT ON THE CENTERLINE OF WASHINGTON AT THE NEXT INTERSECTION SOUTH OF 36 TH STREET.

SURVEYORS CERTIFICATE

I, DAVID K. BALLING, DO HEREBY CERTIFY THAT I AM A REGISTERED LAND SURVEYOR I HOLDING CERTIFICATE NO. 175114 AS PRESCRIBED BY THE STATE OF UTAH AND THAT I HAVE MADE A SURVEY OF THE MONUMENTS SHOWN HEREON AND THAT THIS SURVEY IS CORRECT.

JANUARY 22, 1998 *David K. Balling*
DATE UTAH SURVEYOR NO. 175114



RECEIVED
JAN 23 1998
Weber County Surveyor

BALLING ENGINEERING
CIVIL ENGINEERING + SURVEYING + PLANNING
PHONE: (801) 295-7237



SURVEY FOR:
OGDEN 36 TH STREET STP 3356 (1) 0
WESTERN QUALITY CONC. VERSAR
340 S 1600 W 768 E UTAH VALLEY DR.
MAPLETON, UTAH AMERICAN FORK, UTAH
84664 84003

SURVEYED BY: D. BALLING
DATE SURVEYED: JAN. 22, 1998
DRAFTING BY: D. BALLING
CHECKED BY: D. BALLING
FILE NUMBER: _____