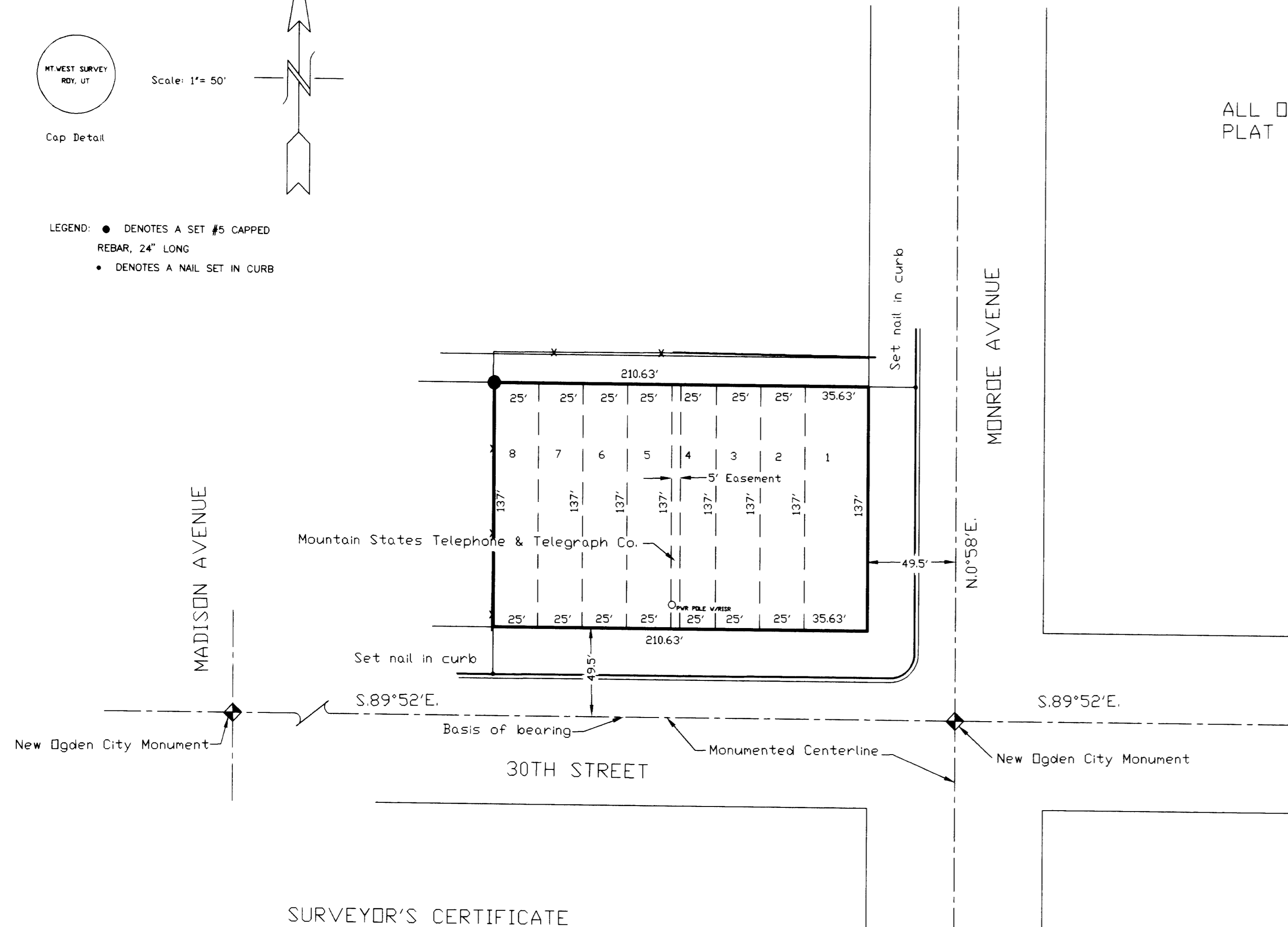


LEGEND: ● DENOTES A SET #5 CAPPED REBAR, 24" LONG
 • DENOTES A NAIL SET IN CURB

PROPERTY DESCRIPTION
 ALL OF LOTS 1 THRU 8, BLOCK 2 OF BLOCK 6,
 PLAT C, PARK PLACE SUBDIVISION, OGDEN CITY



SURVEYOR'S CERTIFICATE

I, DICK N. MECHEM, UTAH PROFESSIONAL LAND SURVEYOR NO. 155649, DO HEREBY CERTIFY THAT THIS PLAT WAS PREPARED FROM A SURVEY MADE ON THE GROUND BY ME, AT THE REQUEST OF BLAIR SERVICE CENTER INC., AND IN BEHALF OF MOUNTAIN WEST PROFESSIONAL LAND SURVEYORS, L.L.C., AND IS TRUE AND CORRECT TO THE BEST OF MY KNOWLEDGE AND BELIEF.

Dick N. Mechem
 DICK N. MECHEM P.L.S. DATE *Jan 12 '98*

NARRATIVE OF SURVEY

THE PURPOSE OF THIS SURVEY WAS TO DEFINE THE ABOVE DESCRIBED PROPERTY UPON THE GROUND. NEW OGDEN CITY CENTERLINE MONUMENTS WERE USED AS CONTROL AND BASIS OF BEARING. THE USE OF THESE MONUMENTS SEEMED TO BE IN HARMONY WITH EXISTING OCCUPATIONS.

RECEIVED
 JAN 27 1998
 Weber County Surveyor

RECORD OF SURVEY			
for			
BLAIR SERVICE CENTER, INC.			
Located In Block 2 of Block 6, Plat C, Park Place Subdivision, Ogden City			
Date 9/08/97	No. 38-01-97	Drawn DNM	Checked DRH
MountainWest Professional Land Surveyors, L.L.C. 1825 W. 4400 S. PO Box 207 Roy, Utah 84067 Phone: (801) 731-5330 Fax: (801) 731-5331			