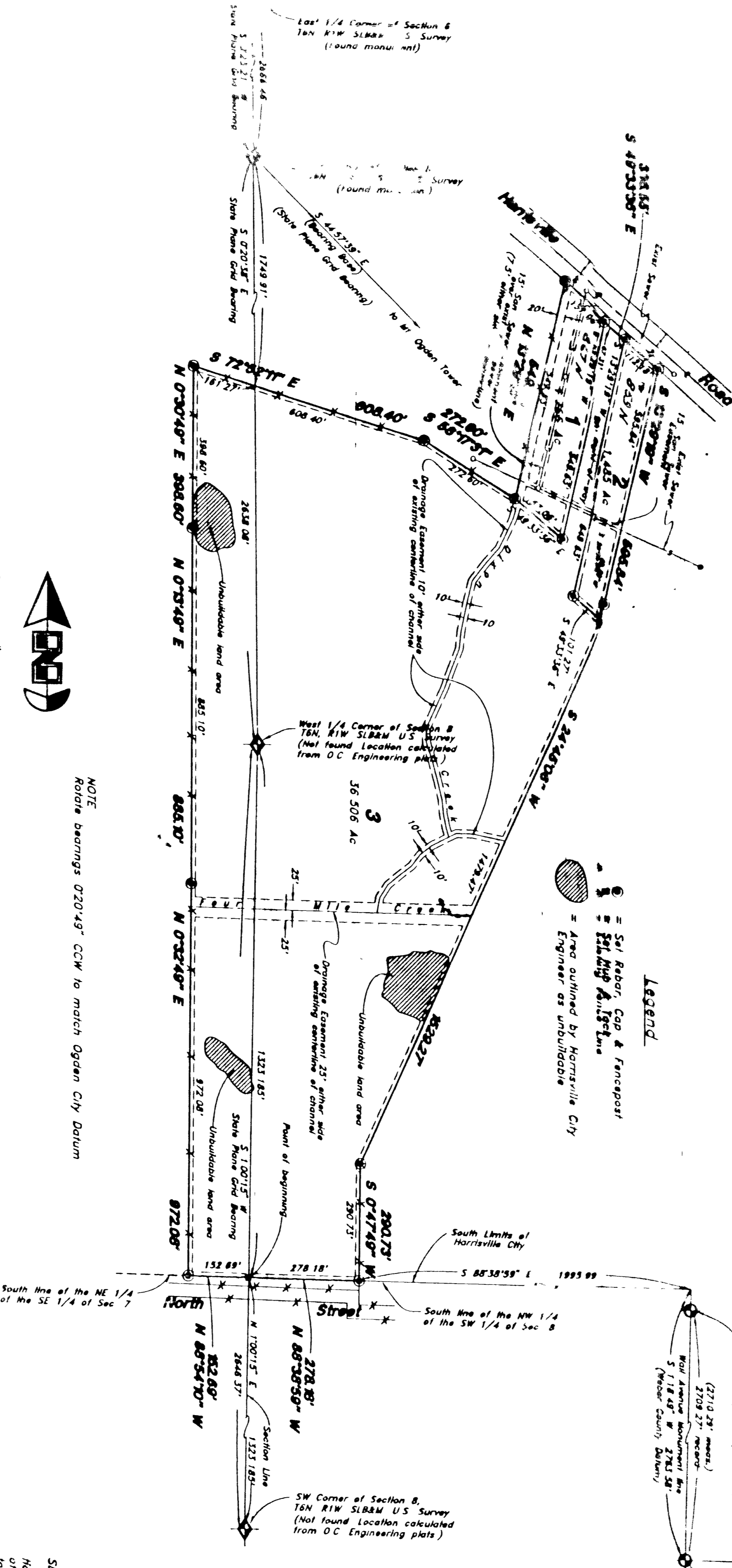


Hart Subdivision No. 1

A part of the East 1/2 of Section 7 and the West 1/2 of Section 8, T8N, R11W, S4B & M, U.S. Survey, Harrisville City, Weber County, Utah



SURVEYOR'S CERTIFICATE
 I, Gary L. Hartman, a Registered Land Surveyor in the State of Utah, do hereby certify that the above described plat, being a subdivision of land, has been correctly drawn to the assigned scale and is a true and correct representation of the following description of lands included in said subdivision based on data on the ground.
 Signed this 14th day of August, 1994
 License No. 4278
 Gary L. Hartman

OWNERS' DECLARATION
 We, the undersigned, owners of the Hart Subdivision No. 1, and hereby declare, grant and sell the land and designated as streets, the same to be used as public thoroughfares forever, and also dedicate to Harrisville City, Utah, for public use and enjoyment, all public utility easements, including power lines and drainage, as may be authorized by Harrisville City.
 Signed this 14th day of August, 1994
 Robert S. Conroy, Jr.
 Harts Family Management, Inc. O/S
 Robert S. Conroy, Jr.
 Harts Family Management, Inc. O/S

ACKNOWLEDGMENT
 County of Utah
 On the 14th day of August, 1994, personally appeared Robert S. Conroy, Jr., of the County of Utah, and Harts Family Management, Inc., who acknowledged to me that they executed the foregoing instrument for the purposes and consideration therein expressed.
 Reading at: Gary L. Hartman, Notary Public.
 Commission Expires: February 27, 2000.
 Gary L. Hartman, Notary Public.

BOUNDARY DESCRIPTION
 A part of the East 1/2 of Section 7 and the West 1/2 of Section 8, T8N, R11W, S4B & M, U.S. Survey, Southeast Corner of the Northeast 1/4 of the Southeast 1/4 of Section 7, being 152,195 feet N 1°07'51" E along the 3rd street from the southeast corner of said Section 8, and solid point also being 854.28 feet S 0°20'42" E along the 3rd street from the Northeast Corner of said Section 8, and running thence N 62°42'07" W 152.89 feet along the South Limits Line of Harrisville City, to an existing 14 1/2 inch diameter well, the center of which is 142.28 feet S 0°14'42" E from the Northeast Corner of said Section 8, and running thence N 82°42'07" W 152.89 feet to the Southeast Corner of said Section 8, and running thence S 12°23'17" W 359.24 feet, and N 15°29'17" E 548.85 feet, thence S 12°23'17" W 359.24 feet, and S 0°14'42" E 142.28 feet to the South Line of Harrisville City, then along a solid line of Harrisville Road, S 49°31'58" E 318.53 feet, thence S 12°23'17" W 359.24 feet, and S 0°14'42" E 142.28 feet to the South Line of the Northwest 1/4 of the Southwest 1/4 of said Section 8, and the South Limits of Harrisville City, thence N 88°59'57" W 219.19 feet to the point of beginning.
 Contains 37,758 A. ±

NOTE: Route bearings 0720'43" CW to match Ogden City Datum
 Scale 1" = 200'
 Legend:
 Found Open City Monument
 Found Open City Monument

HARRISVILLE CITY ATTORNEY
 I have examined the foregoing plat and description of Hart Subdivision No. 1 and in my opinion the same conforms to the City Ordinance applicable thereto and am in full compliance with the same.
 Signed this 14th day of August, 1994
 [Signature]

HARRISVILLE CITY ENGINEER
 I hereby certify that I have carefully investigated the lines of the foregoing plat and map and description of the land embraced therein, and the same conform to the City Ordinance applicable thereto and the monuments on record in this office.
 Signed this 10th day of August, 1994
 [Signature]

HARRISVILLE CITY APPROVAL
 This is to certify that this plat and description of this plat were duly approved and executed by the City Council of Harrisville City, Utah, this 9th day of August, 1994.
 The City Clerk
 Mayor

HARRISVILLE CITY PLANNING COMMISSION
 Approved by the Harrisville City Planning Commission on the 12th day of August, 1994.
 [Signature]

WEBER COUNTY RECORDS
 DEPT. OF RECORDS
 2ND FLOOR
 200 N. MAIN ST.
 HARRISVILLE, UTAH
 BY: [Signature]
 36-53 MAR 22

NOTICE: LOT, UNIT, and Drainage Property Lines as indicated by Dashed Lines Unless otherwise Shown.
 GREAT BASIN ENGINEERING, INC.
 CONSULTING ENGINEERS AND SURVEYORS
 3544 LINCOLN BLVD., OGDEN, UTAH, 84401
 PHONE: (801) 466-1111 FAX: (801) 466-1112