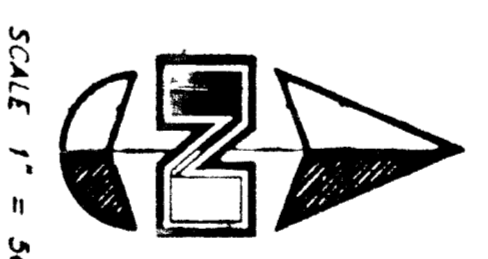
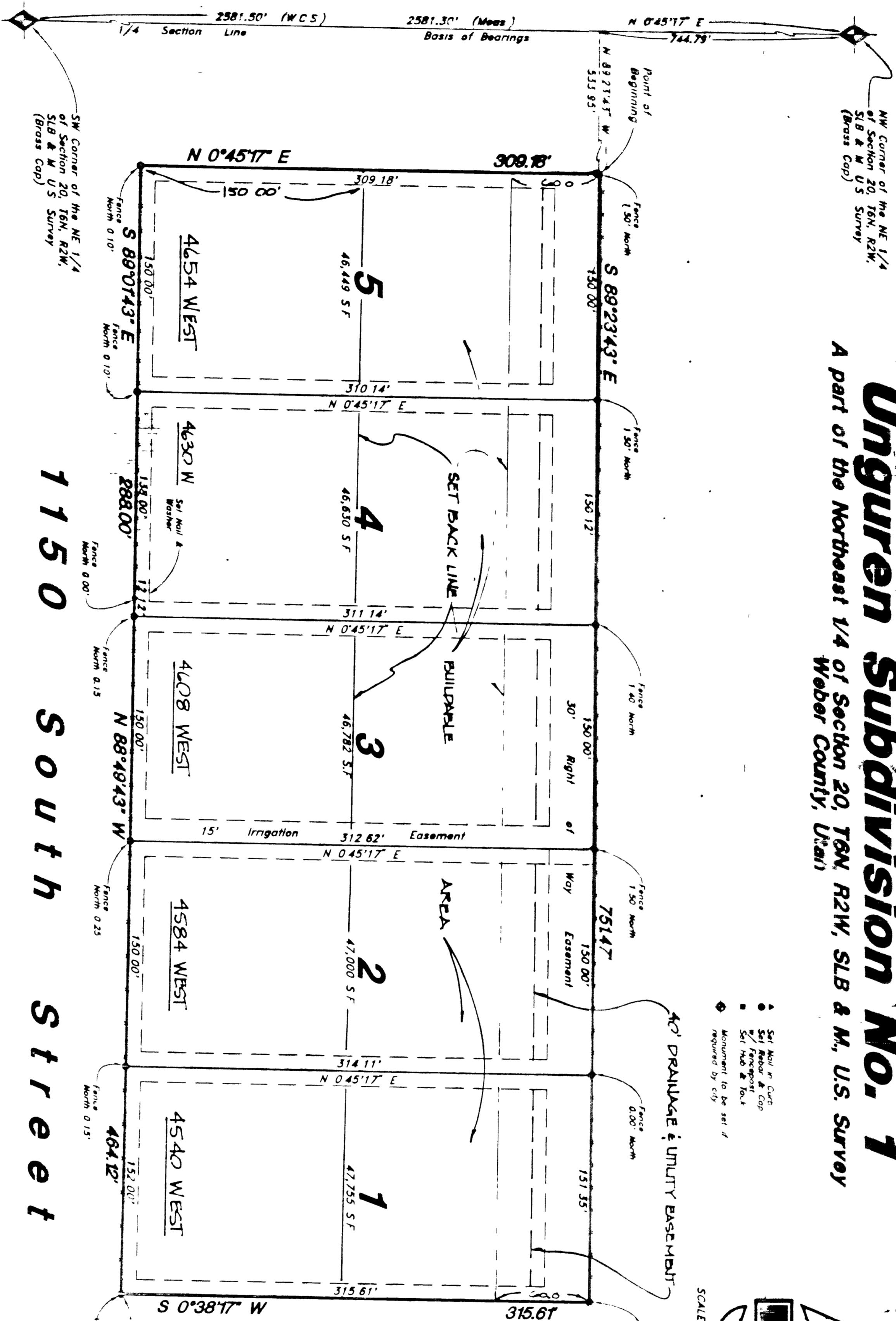


# Unguren Subdivision No. 1

A part of the Northeast 1/4 of Section 20, T6N, R21W, SLB & M, U.S. Survey  
Weber County, Utah



**SURVEYOR'S CERTIFICATE**

I, Gary L. Morrison, a Registered Land Surveyor in the State of Utah, do hereby certify that this plat of Unguren Subdivision No. 1 in Wasatch County, Utah has been correctly prepared from the original field notes and is a true and correct copy thereof. The original field notes and plat are on file in my office, located at 1100 West 100th Street, Salt Lake City, Utah. The plat is based on data supplied from records in the Weber County Recorder's Office, and of a survey made on the ground.

Signed this 24th day of September, 1994  
License No. 4778  
Gary L. Morrison  
Weber County Surveyor

**OWNER'S DEDICATION**

We, the undersigned owners of the herein described tract of land, hereby set apart and subdivide the same into lots and streets as shown on this plat, and more particularly as shown on the attached map, and we do hereby dedicate to the public the streets, easements and other improvements shown thereon. We do hereby dedicate to the public the streets, easements and other improvements shown thereon, and we do hereby dedicate to the public the streets, easements and other improvements shown thereon.

Signed this 28th day of September, 1994  
Landmark Construction, a Utah Corporation  
Dean H. Giorgio  
Leno Giorgio  
M. Unguren

**ACKNOWLEDGMENT**

State of Utah  
County of Utah  
On the 28th day of September, 1994, personally appeared before me Leno Giorgio, who being by me duly sworn and not being in any legal disability, acknowledged to me that he is the owner of the herein described premises, and that he is executing the foregoing instrument in accordance with its contents and for the purposes therein mentioned.

Witness my hand and the seal of my office this 28th day of September, 1994.  
Residing at Ogden, Utah  
A Notary Public for the State of Utah  
Commission Expires Sept. 17, 1996  
Shirley L. Williams

**BOUNDARY DESCRIPTION**

A part of the Northeast Quarter of Section 20, Township 6 North, Range 2 West, Salt Lake Base and Meridian, U.S. Survey, 0°45'17" West along the quarter section line and 533.95 feet South 89°23'43" East from the North-1/4 corner of said Quarter Section, and running thence South 89°23'43" East 750 feet, thence North 10°12'12" West along said line as follows: North 86°49'43" West 464.12 feet, thence North 89°01'45" West 268.00 feet, thence North 0°45'17" East 310.14 feet to the point of beginning.

Containing 5,386 ± sq. ft., More or Less.

**WEBER COUNTY SURVEYOR**

I hereby certify that I have investigated the lines of survey of the foregoing plat and legal description of the land embraced therein, and find the same to conform to the original field notes and monuments on record in this office.

Signed this 24th day of October, 1994  
Gary L. Morrison  
Weber County Surveyor

**WEBER COUNTY ATTORNEY**

I have accepted this subdivision plat and in my opinion it conforms with the county ordinance applicable thereto and now in force and effect.

Signed this 11th day of October, 1994  
Walter H. Haddock  
Weber County Attorney

**WEBER COUNTY ENGINEER**

I hereby certify that I approve the required improvement amount of financial guarantees for these improvements.

Signed this 12th day of October, 1994  
C. J. Johnson  
Weber County Engineer

**WEBER COUNTY COMMISSION ACCEPTANCE**

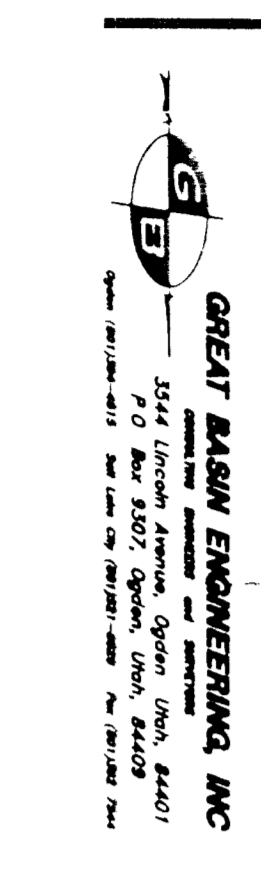
This is to certify that this subdivision plat, the dedication and approval of the Commission of Weber County, Utah are hereby accepted by the Commissioners of Weber County, Utah.

Signed this 14th day of October, 1994  
James F. Stebbins  
Chair, Weber County Commission

**WEBER COUNTY PLANNING COMMISSION APPROVAL**

This is to certify that this subdivision plat was approved by the Planning Commission of Weber County, Utah on the 11th day of October, 1994.

Signed this 11th day of October, 1994  
Clyde B. Eldred  
Chair



**WEBER COUNTY RECORDER**

FILE NO.	311182
BOOK	155
PAGE	5
RECORDED	1994 OCT 15 10:50 AM
INDEXED	1994 OCT 15 10:50 AM
FILED	1994 OCT 15 10:50 AM

1994 OCT 15 10:50 AM