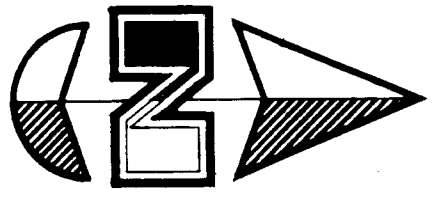


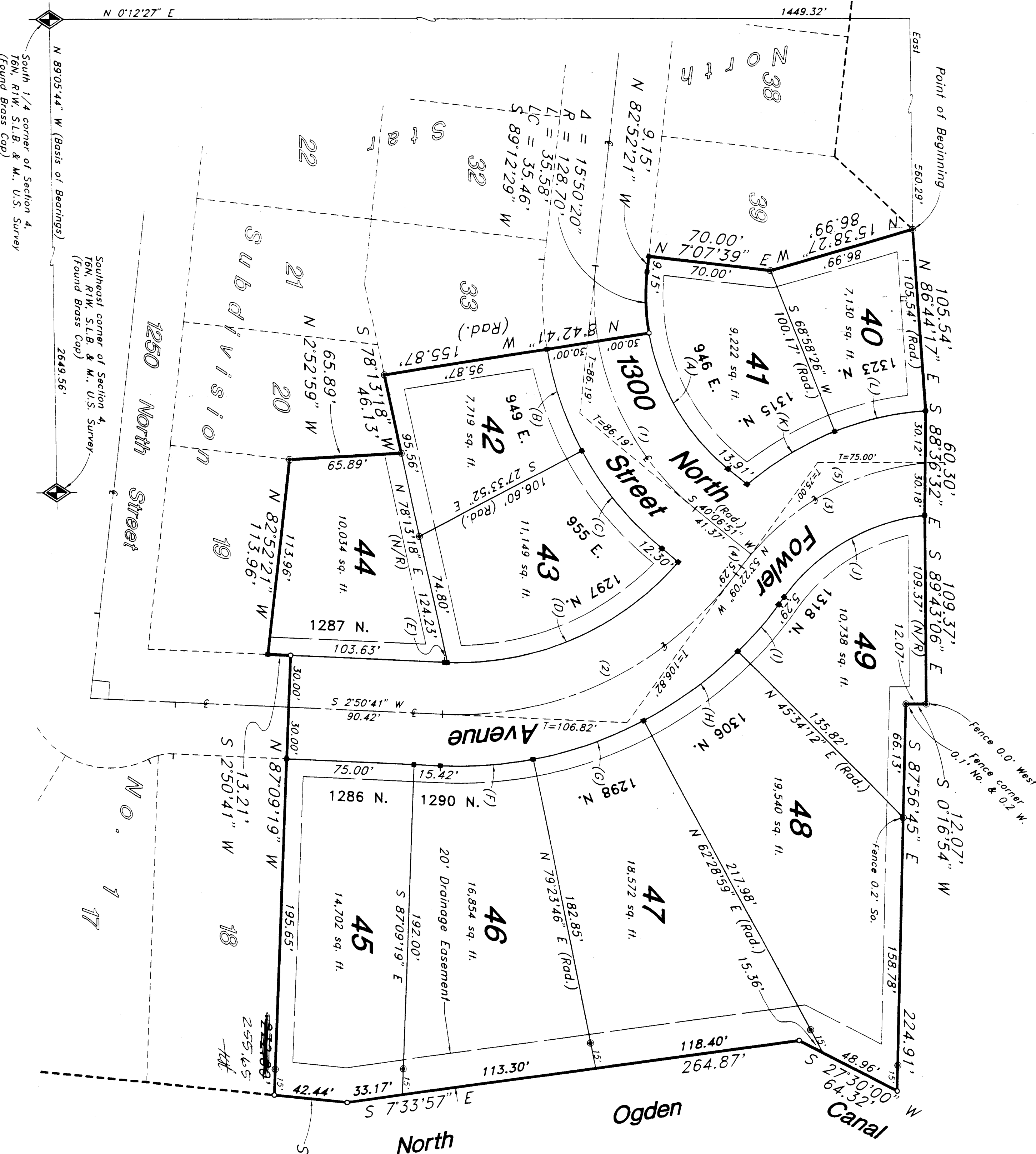
North Star Subdivision No. 2  
A part of the Southeast Quarter of Section 4, T6N, R1W, S1.B. & M, U.S. Survey:  
Ogden City, Weber County, Utah



Scale: 1" = 40'

- Legend:
- Sub Area 1 Cop
  - Sub Area 2 Cop
  - Sub Area 3 Cop
  - Sub Area 4 Cop
  - Monument to be set
  - Monument to be set
  - Monument to be set

Narrative:  
This Plat and Survey was requested by Mr. Richard M. Webber of Weber County, Utah, and was prepared by the Ogden City Engineer. The Gross Cop Accounts were found at the Southeast corner and the Northwest corner of the Southeast Quarter of Section 4, T6N, R1W, S1.B. & M, U.S. Survey. These two monuments were used as the basis of bearings and distances for the plat and survey shown on this drawing.



Calculating Curve Data			
(1)	4 = 41,028'	4 = 58,123'	4 = 68,094'
	4 = 138.00'	4 = 1,088.22'	4 = 1,272.88'
	4 = 111.61'	4 = 1,088.45'	4 = 1,272.88'
	4 = 60,423.9'	4 = 27,024.5'	4 = 1,272.88'
		4 = 108.82'	
Transitioning Curve Data			
(2)	4 = 1,292.30'	4 = 1,444.98'	
	4 = 118.24'	4 = 118.24'	
	4 = 9.02'	4 = 9.02'	
	4 = 51,373.9'	4 = 27,024.5'	
(3)	4 = 1,292.30'	4 = 1,444.98'	
	4 = 118.24'	4 = 118.24'	
	4 = 9.02'	4 = 9.02'	
	4 = 51,373.9'	4 = 27,024.5'	
(4)	4 = 1,292.30'	4 = 1,444.98'	
	4 = 118.24'	4 = 118.24'	
	4 = 9.02'	4 = 9.02'	
	4 = 51,373.9'	4 = 27,024.5'	

**SURVEYOR'S CERTIFICATE**  
I, Joy R. Anderson, a Registered Land Surveyor in the State of Utah, do hereby certify that this plat of North Star Subdivision No. 2, is a true and correct representation of the following described lands included in said subdivision based on data compiled from records in the Weber County Recorder's Office and of a survey made by me on the ground.  
Signed this 19th day of December, 1936.

License No. 2430  
Joy R. Anderson  
Weber County, Utah

**OWNER'S DEDICATION**

We, the undersigned owners of the herein described tract of land, hereby set apart and dedicate the same into lots and streets, and hereby dedicate, grant and convey to Ogden City, Weber County, Utah, all those parts or portions of said tract of land designated as streets, the same to be used as public thoroughfares forever, and also dedicate to Ogden City those certain strips as easements, for installation, and drainage purposes, of public utility service lines and drainage as may be authorized by Ogden City.

Signed this 20th day of December, 1936.  
Webber, Inc.

**ACKNOWLEDGMENT**

State of Utah }  
County of Weber }  
On the 20th day of December, 1936, personally appeared before me, Richard M. Webber, who being duly sworn, did say that he is General Manager of Webber, Inc. and that said instrument was signed in behalf of said Corporation by a resolution of its Board of Directors and Richard M. Webber acknowledged to me that said Corporation executed the same.  
Residing at: Ogden, Utah  
A Notary Public commissioned in Utah  
Commission Expires: 10-24-37

**BOUNDARY DESCRIPTION**

A part of the Southeast Quarter of Section 4, T6N, R1W, S1.B. & M, U.S. Survey, beginning at the Southeast corner of Section 4, T6N, R1W, S1.B. & M, U.S. Survey, and extending North 07°22'27" E along the South 1/4 corner of Section 4, T6N, R1W, S1.B. & M, U.S. Survey, a distance of 1448.32 ft. to the North Star Subdivision No. 1 boundary line, and extending North 07°22'27" E along the quarter section line and 560.29 ft. East from the Southwest corner of said Quarter Section, running thence N 88°24'11" E, East from the Southwest corner of said Quarter Section, a distance of 1207 ft. to an existing fence line, thence S 87°56'45" E 224.91 ft. along said existing fence line and said existing fence (1) line extended to the center of the North Star Subdivision No. 2, thence S 7°33'52" E 264.87 ft. and S 6°00'35" W 42.44 ft. to the Northeast corner of Lot 18, of said North Star Subdivision No. 2, thence along the Northern boundary of Lot 18, a distance of 158.87 ft., Southwesterly along the arc of a 128.70 foot radius curve to the right, a distance of 35.38 ft. (central angle equals 82°52'21" W 9°13'9" N, bearing E 70°00' ft. and N 13°58'27" W 88.99 ft. to the point of beginning.

Contains 3 636 Acres

RECEIVED

APR 2 8 1938

WEBER COUNTY SURVEY

Ogden City Planning Commission  
Approved by the Ogden City Planning Commission on the 19th day of December, 1936.

Paul H. Stewart  
Chair

WEBER COUNTY RECORDER	FILE NO. 2430
FILED AND RECORDED	DATE OF RECORDING
APR 2 1938	
BY: (Signature)	

**GREAT BASIN ENGINEERING, INC.**  
1544 Lincoln Avenue, Ogden, Utah, 84401  
P.O. Box 8207, Ogden, Utah, 84409  
Phone (801)333-4115

**OGDEN CITY ENGINEER**  
I hereby certify that the requirements of all applicable statutes and our Ogden City of the foregoing plat and dedication have been complied with.  
Signed this 17th day of January, 1937.

**PUBLIC WORKS DIRECTOR**  
I hereby certify that the requirements of all applicable statutes and our Ogden City of the foregoing plat and dedication have been complied with.  
Signed this 17th day of January, 1937.

**OGDEN CITY APPROVAL**  
This is to certify that this plat and dedication of this plat were duly approved and accepted by the Mayor of Ogden City on this 19th day of December, 1936.  
Attest: (Signature)  
City Recorder

**OGDEN CITY APPROVAL**  
I hereby certify that the requirements of all applicable statutes and our Ogden City of the foregoing plat and dedication have been complied with.  
Signed this 17th day of January, 1937.