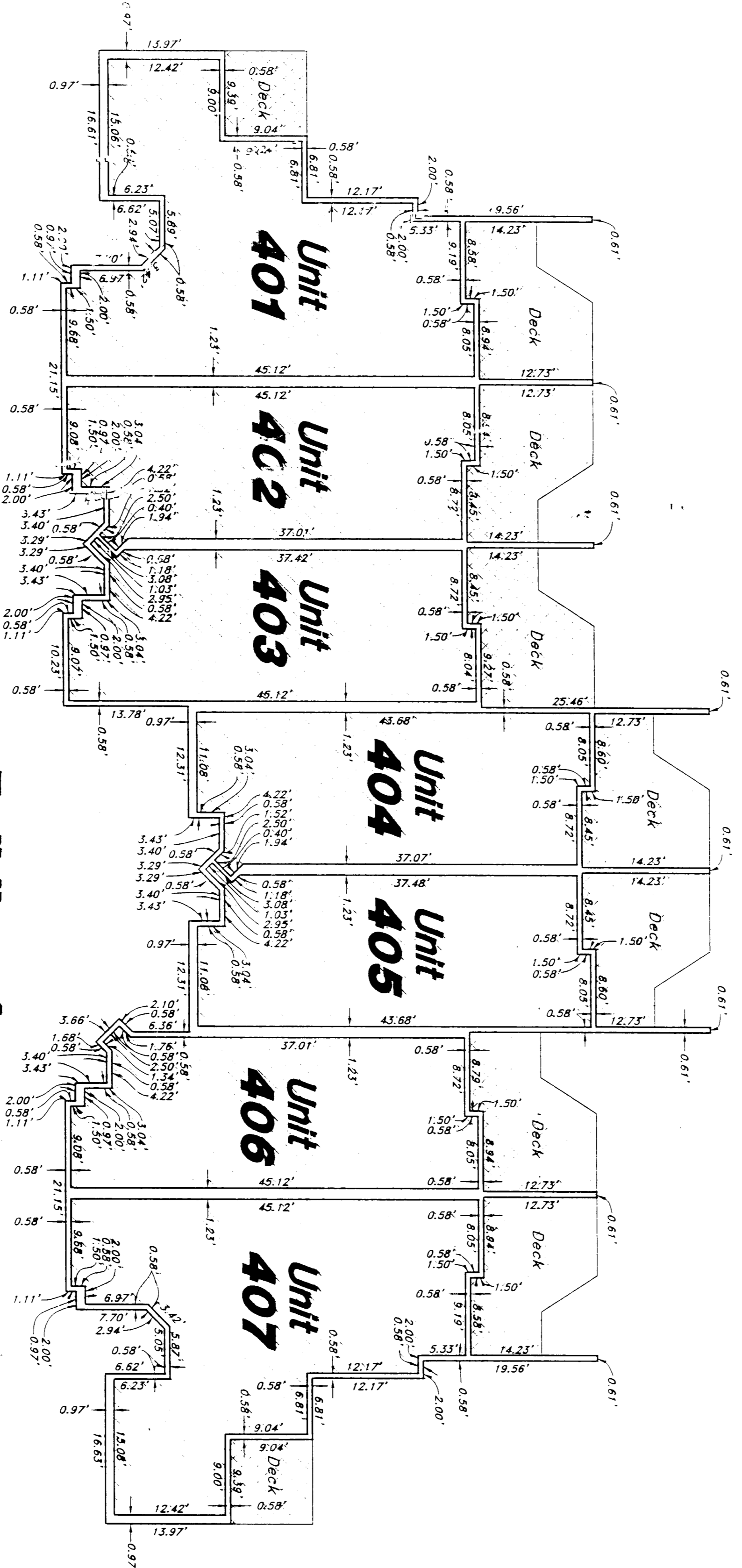


2 OF 3

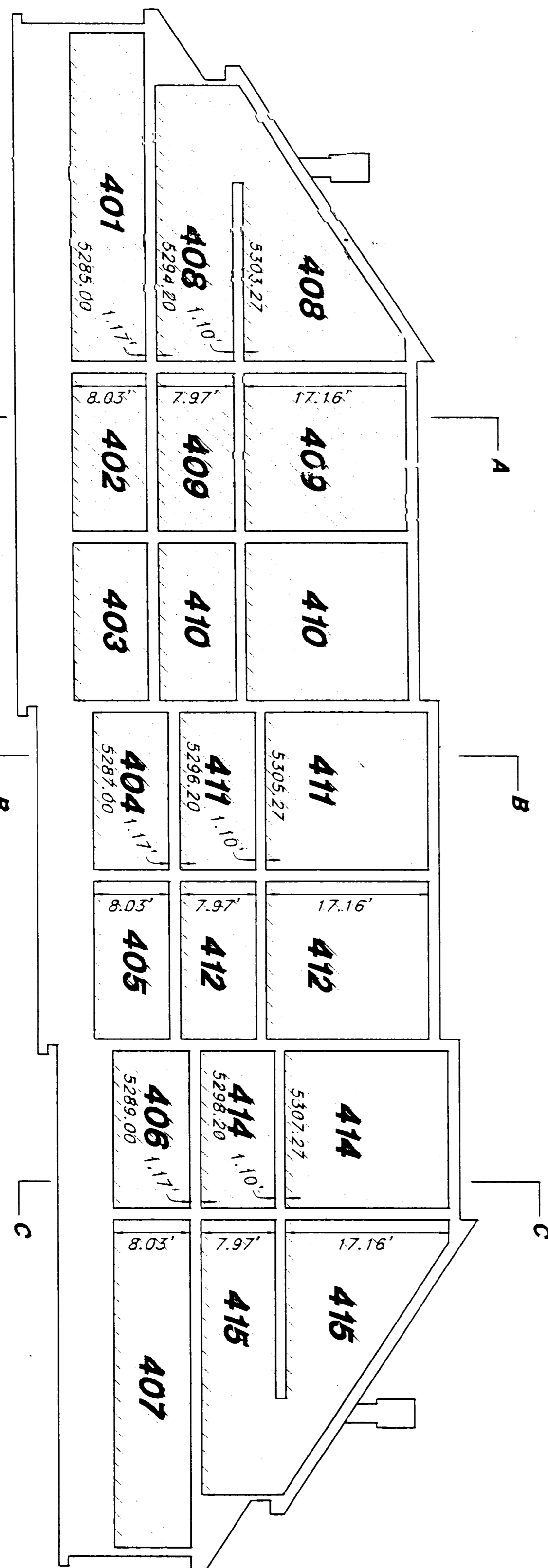
2 OF 3

159-914

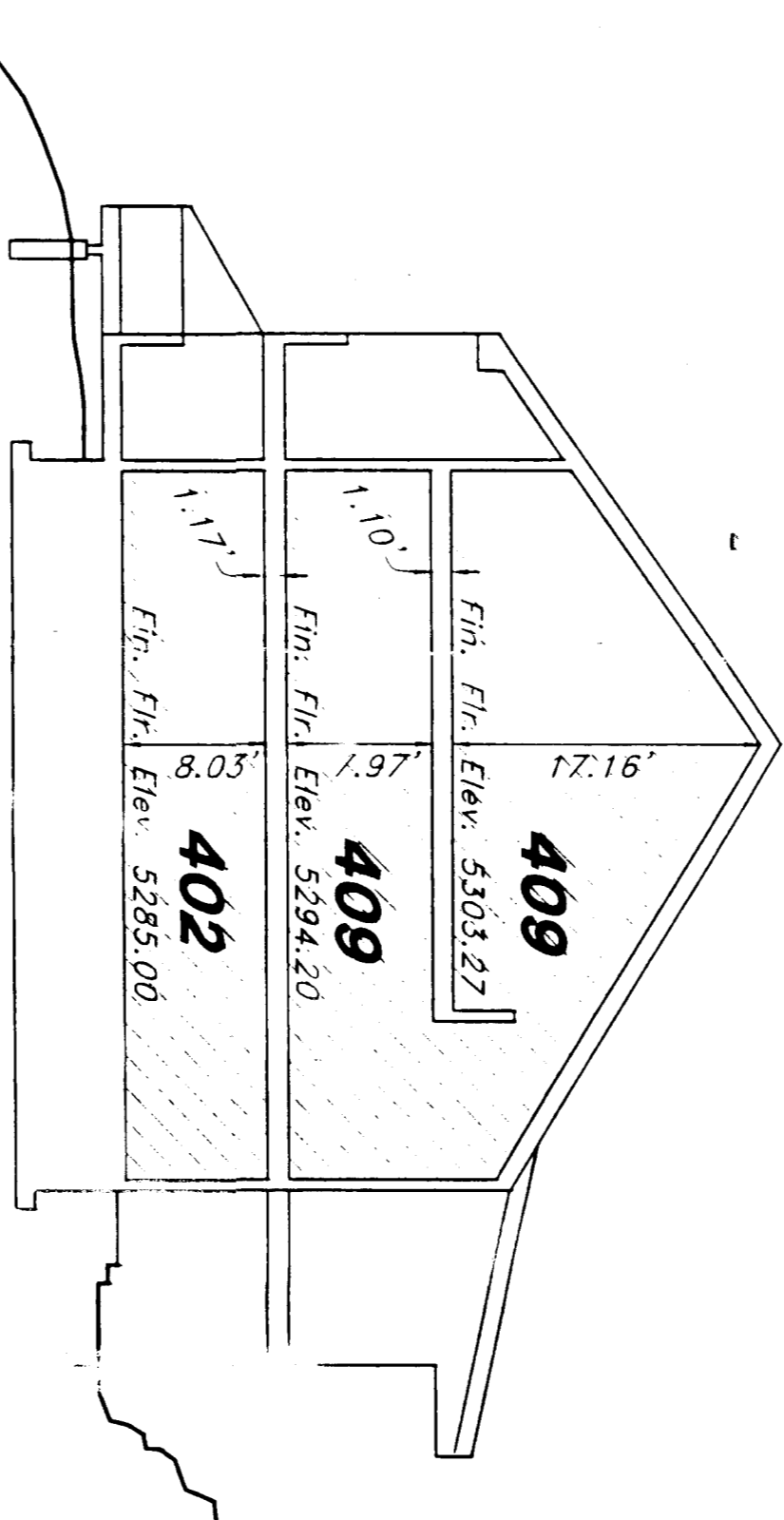
A Supplemental Record of Survey Map to
WOLF CREEK VILLAGE II PHASE 3
 Timeshare Condominium
 A part of the Southwest 1/4 of Section 22, T7N, R1E, S1B&M, U.S. Survey
 Weber County, Utah



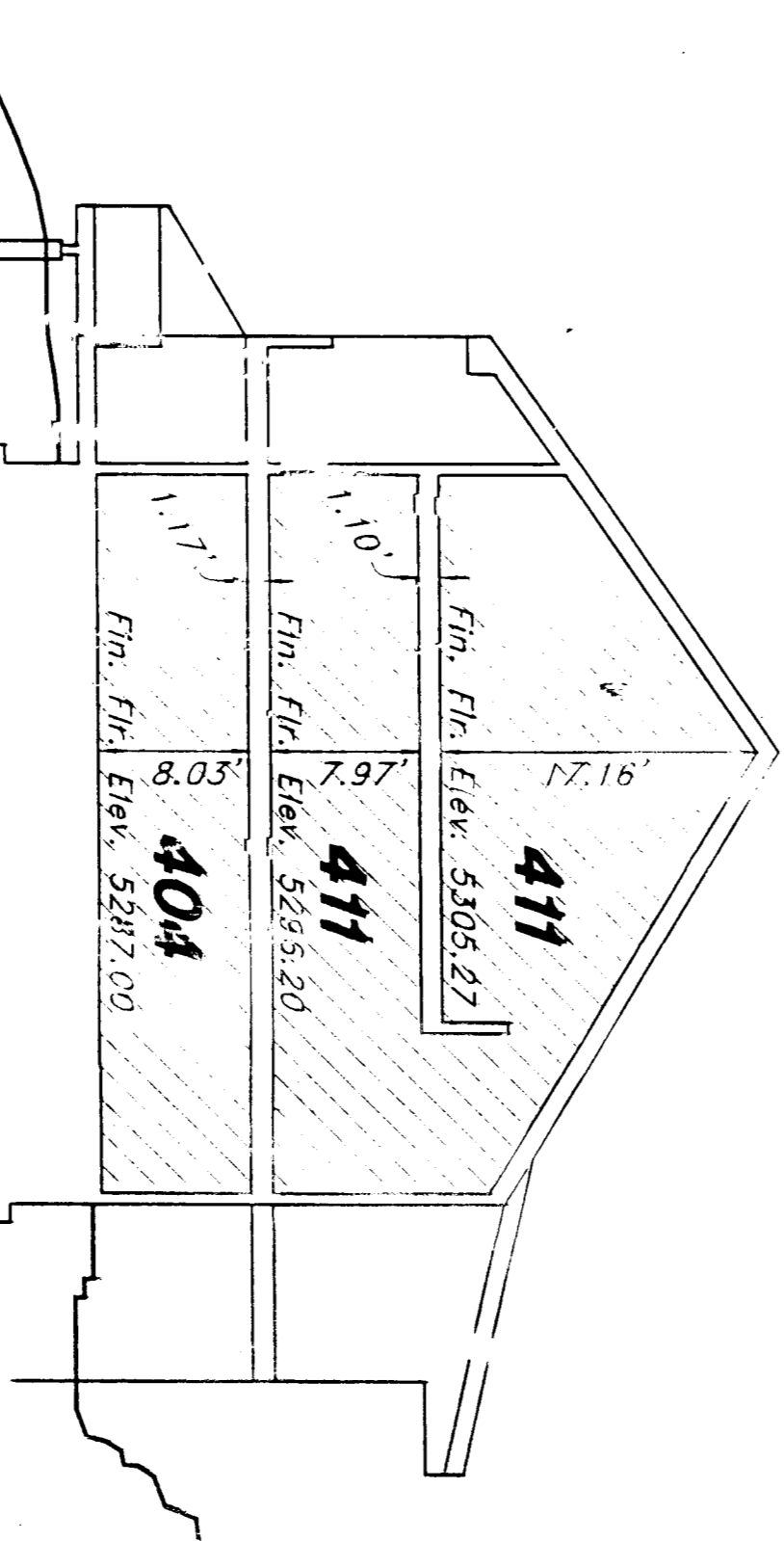
Building 4
 Main Level Floor Plan
 Scale: 1" = 10'



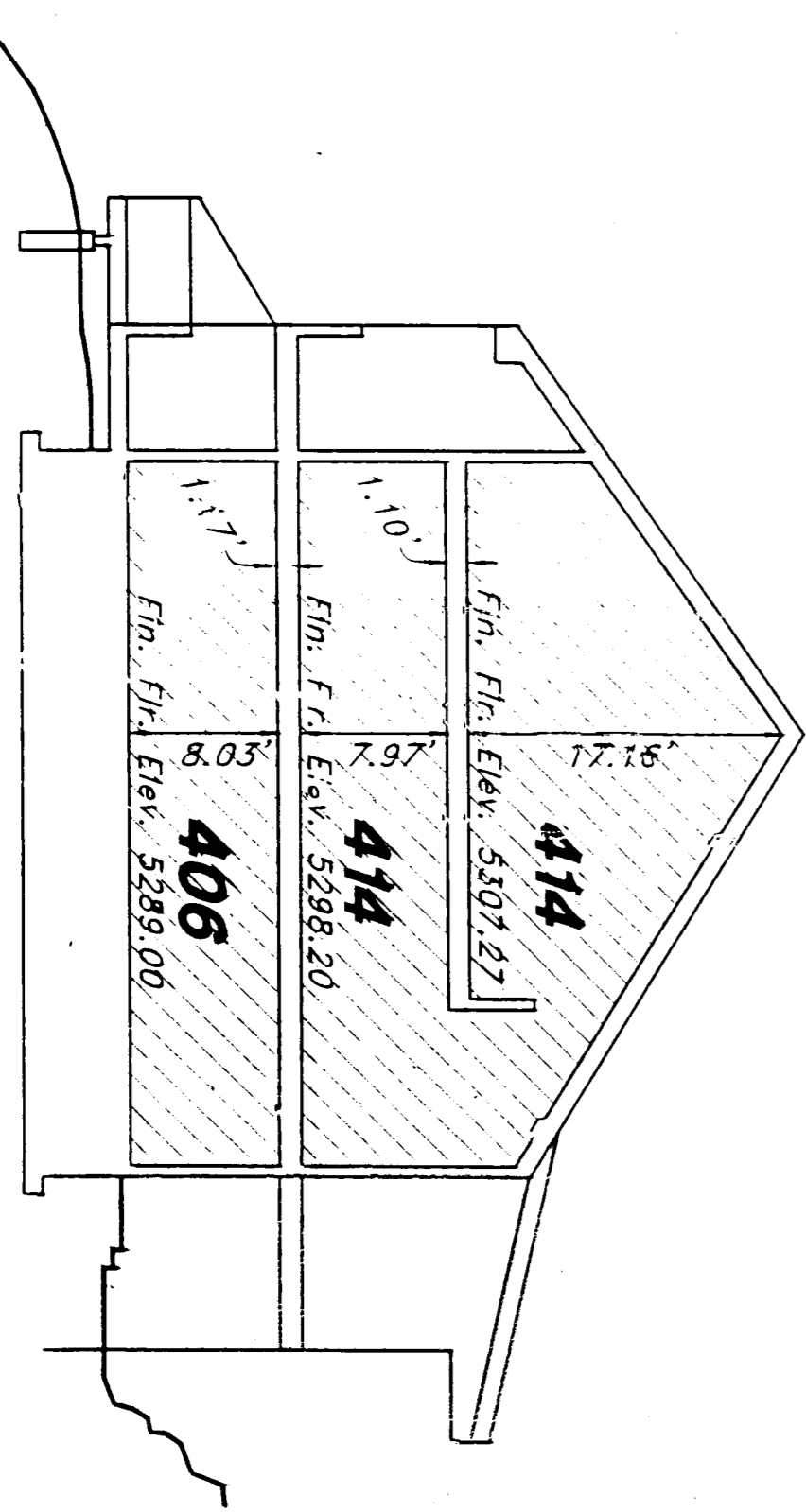
Building 4
 Section
 Scale: 1" = 10'



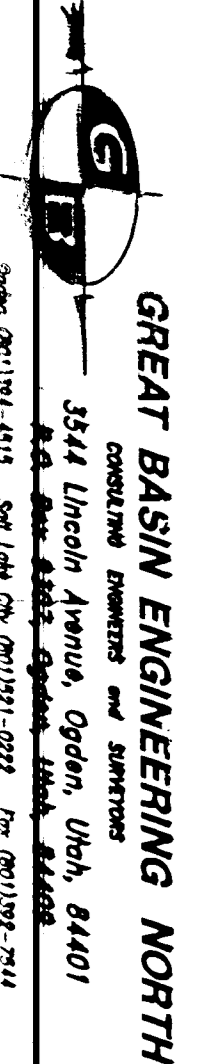
Building 4
 Section A-A
 Scale: 1" = 10'



Building 4
 Section B-B
 Scale: 1" = 10'

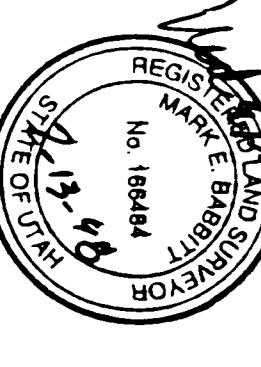


Building 4
 Section C-C
 Scale: 1" = 10'



GREAT BASIN ENGINEERING NORTH
 3541 Lincoln Avenue, Ogden, Utah, 84401
 Phone: (801) 471-4433 Fax: (801) 471-2221 Telex: (801) 471-2111

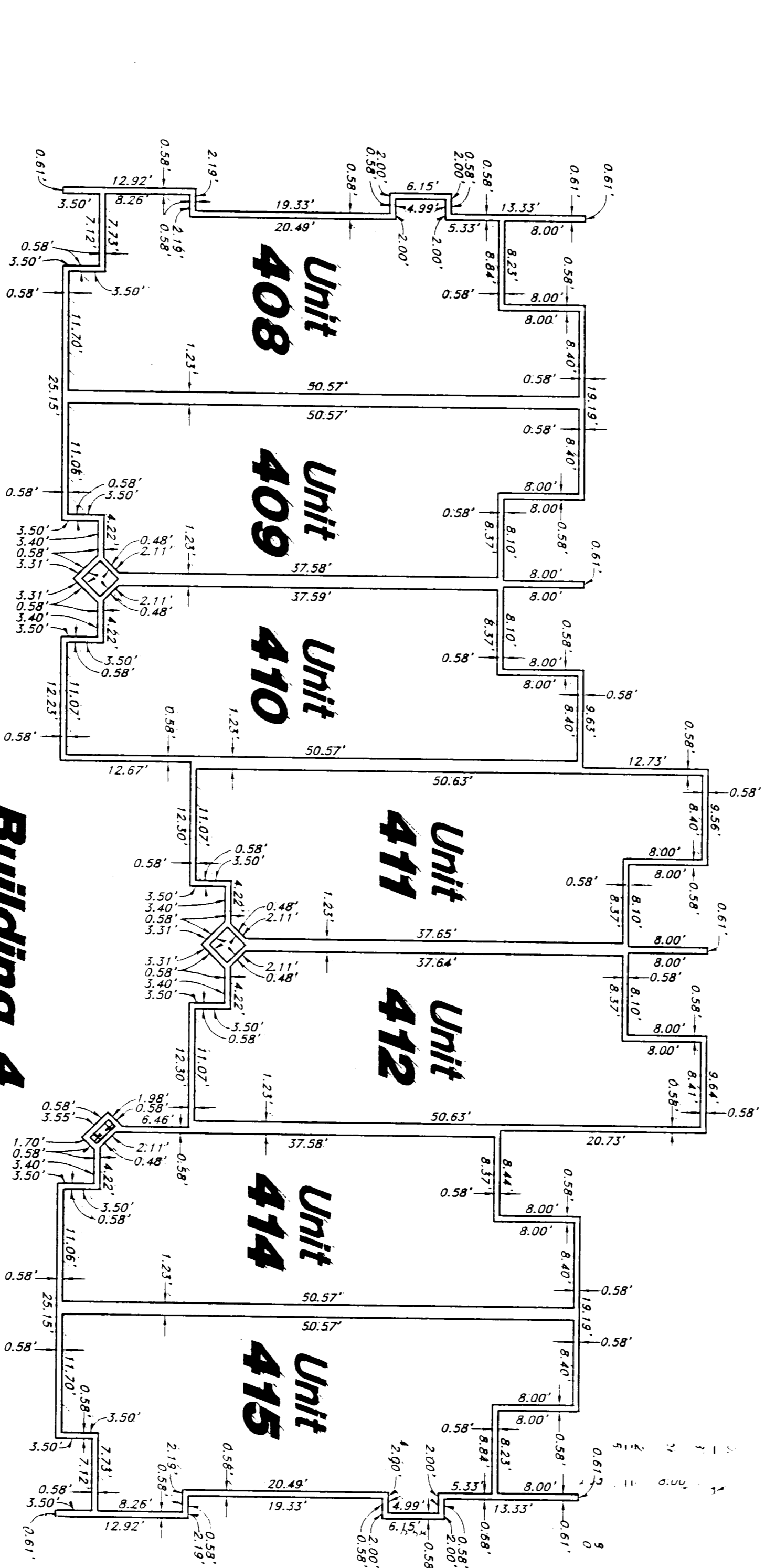
RECEIVED
 APR 8 1988
 WEBER COUNTY SURVEY



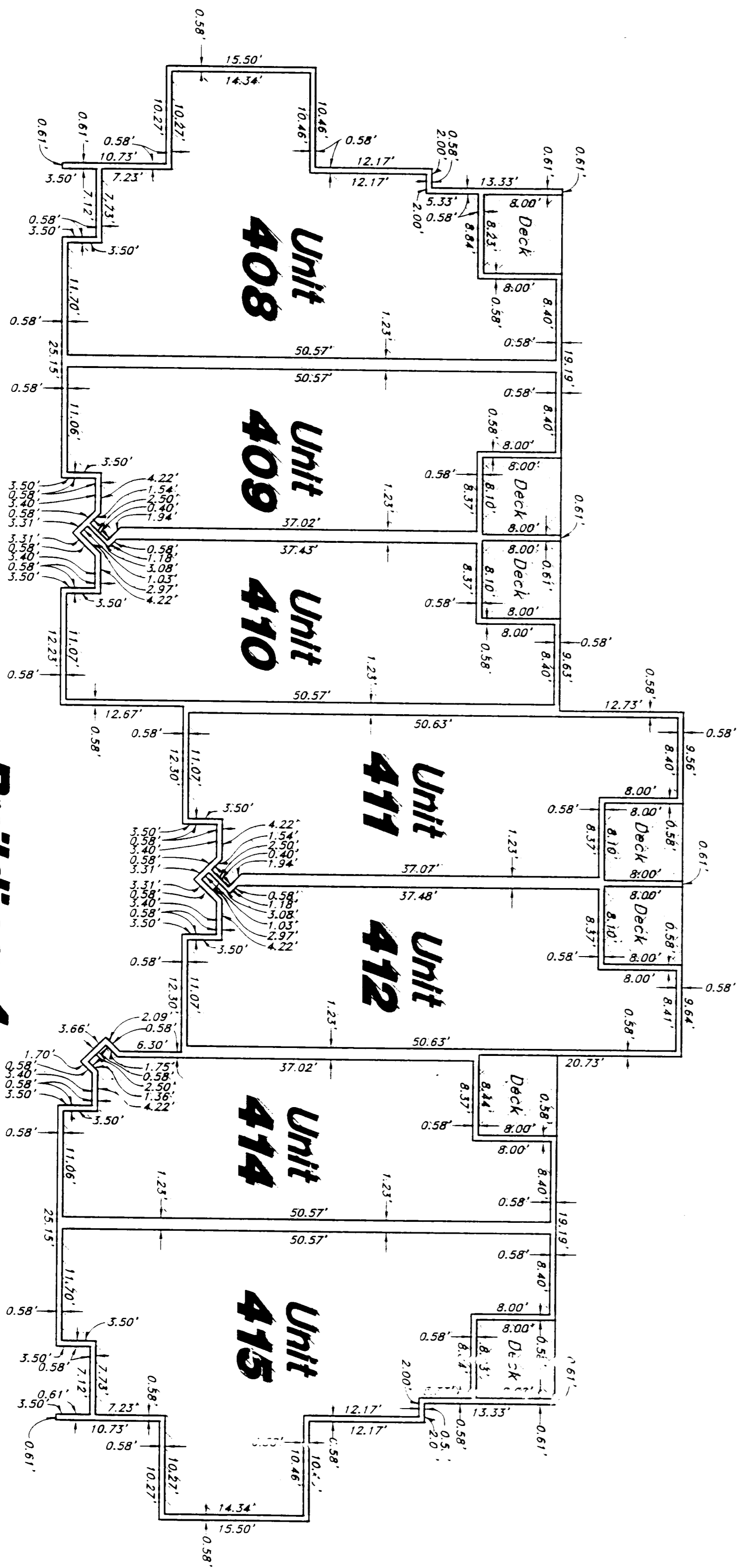
WEBER COUNTY RECORDER
 DORA L. BETTS
 RECORDER
 WEBER COUNTY, UTAH

46-55

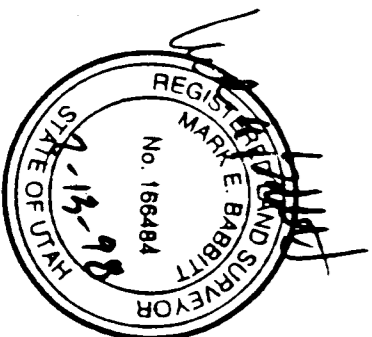
A Supplemental Record of Survey Map to
WOLF CREEK VILLAGE II PHASE 3
 Timeshare Condominium
 A part of the Southwest 1/4 of Section 22, T7N, R1E, SLB&M, U.S. Survey
 Weber County, Utah



Building 4
 Loft Level Floor Plan
 Scale: 1" = 10'



Building 4
 Upper Level Floor Plan
 Scale: 1" = 10'



RECEIVED
 APR 2 1998
 WEBER COUNTY CLERK

WEBER COUNTY RECORDER
 JAMES L. BROWN
 100 N. MAIN ST.
 CANYON BLVD. SUITE 200
 OGDEN, UTAH 84401
 (801) 468-1111

GREAT BASIN ENGINEERING NORTH
 CONSULTING ENGINEERS AND ARCHITECTS
 3500 University Blvd., Ogden, Utah, 84401
 Open (801) 468-4444 Fax (801) 468-4444

Sheet 3 of 3

WELF002

46-55