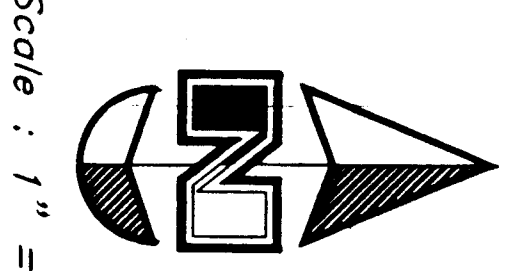


# Lakeview Ridge Subdivision No. 3

## A part of the Northeast 1/4 of Section 15, T6N, R1W, S18&M, U.S. Survey Ogden City, Weber County, Utah



Scale: 1" = 50'

- ▲ Set Nail in Curb
- Set Rebar, Cap & Fence Post
- Set Rebar & Cap
- ◆ Set Hub & Tack
- ◆ Monument to be set if required by city

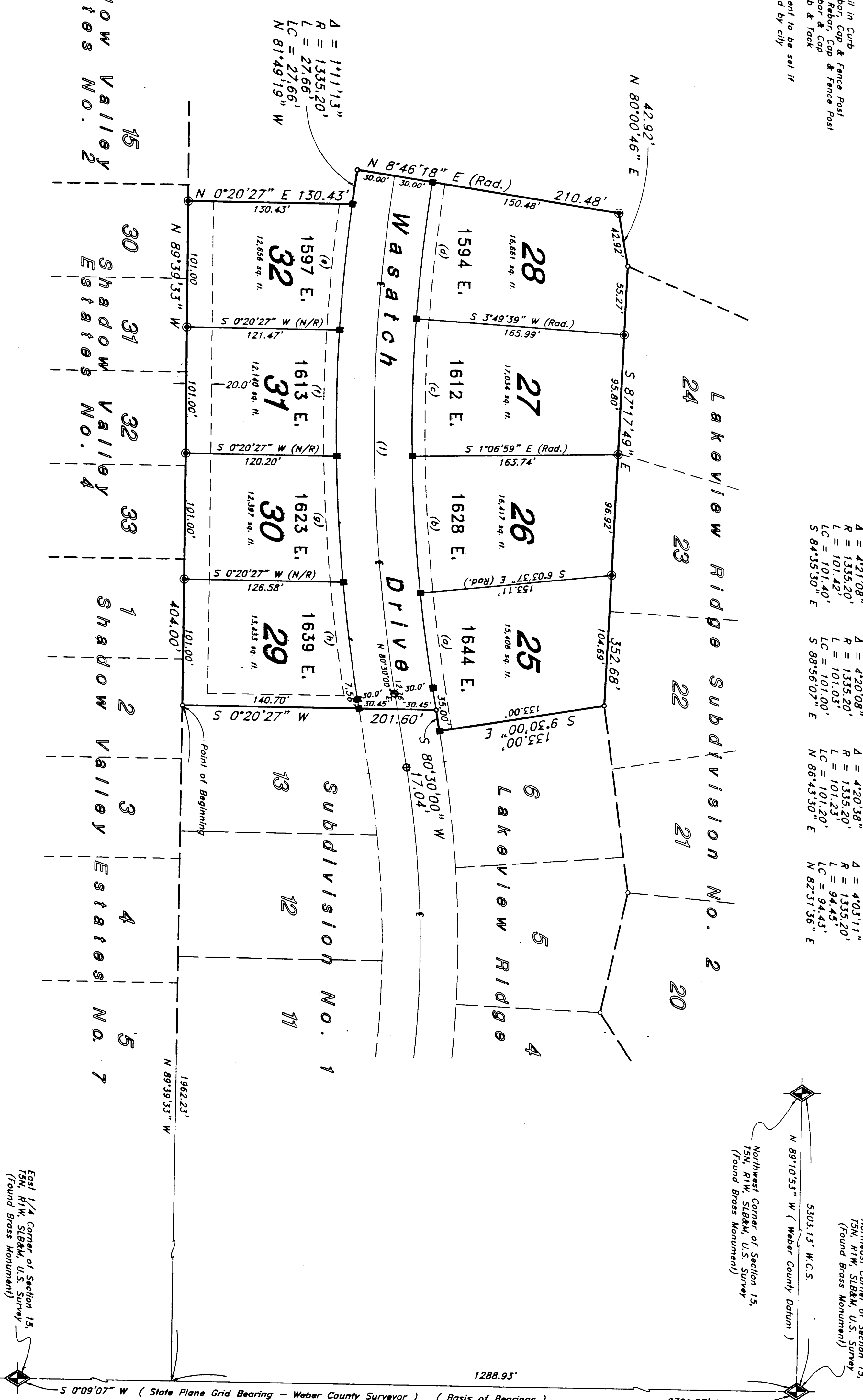
**MARRATIVE:**  
This Plat and Survey was requested by Mr. Chris Marthieu in order to subdivide eight (8) residential lots located in the Gross Cap. Monuments were found at the Northeast Corner and S 0°09'07" W between these two monuments was used as the basis of bearings. No monuments were used as the basis of corners were monumented as depicted on this drawing.

**Proposed Curve Data**

Curve	(A)	(B)	(C)	(D)
1	A = 3726.73" R = 120.520' L = 76.56' LC = 101.40' N 82°13'12" E	A = 456.38" R = 120.520' L = 120.520' LC = 110.00' S 88°38'40" E	A = 456.38" R = 120.520' L = 120.520' LC = 110.00' S 88°38'40" E	A = 456.38" R = 120.520' L = 120.520' LC = 110.00' S 88°38'40" E
2	A = 456.38" R = 120.520' L = 120.520' LC = 110.00' S 88°38'40" E	A = 456.38" R = 120.520' L = 120.520' LC = 110.00' S 88°38'40" E	A = 456.38" R = 120.520' L = 120.520' LC = 110.00' S 88°38'40" E	A = 456.38" R = 120.520' L = 120.520' LC = 110.00' S 88°38'40" E
3	A = 456.38" R = 120.520' L = 120.520' LC = 110.00' S 88°38'40" E	A = 456.38" R = 120.520' L = 120.520' LC = 110.00' S 88°38'40" E	A = 456.38" R = 120.520' L = 120.520' LC = 110.00' S 88°38'40" E	A = 456.38" R = 120.520' L = 120.520' LC = 110.00' S 88°38'40" E
4	A = 456.38" R = 120.520' L = 120.520' LC = 110.00' S 88°38'40" E	A = 456.38" R = 120.520' L = 120.520' LC = 110.00' S 88°38'40" E	A = 456.38" R = 120.520' L = 120.520' LC = 110.00' S 88°38'40" E	A = 456.38" R = 120.520' L = 120.520' LC = 110.00' S 88°38'40" E

**Centerline Curve Data**

Curve	(1)
1	A = 1816.17" R = 1305.20' L = 416.23' LC = 110.00' N 89°18'06" E T = 209.90'



Northwest Corner of Section 15, T6N, R1W, S18&M, U.S. Survey (Found Brass Monument)  
3503.13' W.C.S.  
N 89°10'53" W (Weber County Datum)  
(Found Brass Monument)

**SURETOR'S CERTIFICATE**  
I, Joy R. Anderson, a Registered Land Surveyor in the State of Utah, do hereby certify that this plat of Lakeview Ridge Subdivision No. 3 in Ogden City, Weber County, Utah has been correctly drawn to the designated scale and is a true and correct on data compiled from a survey made by me on the ground.  
Signed this 19th day of March, 1997.  
Joy R. Anderson

**OWNER'S DEDICATION**  
We, the undersigned owners of the herein described tract of land, hereby set apart and dedicate the same into lots and streets as shown on this plat, and agree to accept the jurisdiction of the City of Ogden, Utah, and to pay for the same as designated on this plat. We, the undersigned, do hereby dedicate, grant and convey to Ogden City, Weber County, Utah, the same to be used as public thoroughfares, and also dedicate to Ogden City these certain strips as easements for public utility and maintenance and operation of public utility streets, lines and drainage, as may be authorized by Ogden City.  
Signed this 19th day of March, 1997.  
Shadow Ridge Development Group - a partnership  
Chris L. Marthieu, J.W.S. Professor, Surveyor, Inc. General Partner  
By: John Wayne Shupe - Pres.

**ACKNOWLEDGMENT**  
On the 19th day of March, 1997, personally appeared before me, J.W.S. Professor, Surveyor, Inc. Corporation, the undersigned, who duly acknowledged to me that said Corporation executed the same.  
Residing at: Ogden, Utah  
Commission Expires: 24 October, 1999  
Gay L. Munnick, Phil Notary

**BOUNDARY DESCRIPTION**  
A part of the Northeast Quarter of Section 15, T6N, R1W, S18&M, U.S. Survey. Beginning at a point in the center of the ground, also being the Southwest Corner of Lot 13, Lakeview Ridge Subdivision No. 1, Ogden City, Utah, which is 1288.93' feet from the Northeast Corner of said Section 15, north 89°39'53" west 404.00' feet along the North line of said Shadow Valley Estates No. 1 and Shadow Valley Estates No. 2, Ogden City, Utah, as it is staked on the ground; thence north 81°49'19" west 27.66' feet along the right of way of the Long Chapel Street North 81°49'19" West 27.66' feet; thence north 81°49'19" East 404.00' feet along the right of way of the Long Chapel Street North 81°49'19" East 404.00' feet; thence south 87°17'49" East 352.68' feet along said Shadow Ridge and Sulphery lines, thence south 87°17'49" East 352.68' feet along said Shadow Ridge and Northwest corner of Lot 6, of said Lakeview Ridge Subdivision No. 1, thence three (3) 133.00' feet, South 80°30'00" West 174.04' feet and South 82°31'36" West 201.60' feet to the point of beginning.

**ODGEN CITY APPROVAL**  
I hereby certify that the requirements of all applicable laws, rules and regulations of the City of Ogden, Utah, have been met and that this plat and dedication have been approved by the Mayor of Ogden City of the day of April, 1997.  
Signed this 19th day of April, 1997.  
GODEN CITY ENGINEER  
GODEN CITY PLANNING COMMISSION  
Approved by the Ogden City Planning Commission on the 19th day of April, 1997.  
Sylvia Walker, Chair

Complan 5216 Areas  
RECEIVED  
APR 28 1998  
WEBER COUNTY SURVEYOR

**GREAT BASIN ENGINEERING, INC.**  
3524 Lincoln Avenue, Ogden, Utah, 84401  
Phone (801) 231-4113 Fax (801) 231-4114  
NOTE:  
1. Utility and Ditching Easements each shown by dashed lines except as otherwise shown.

**GODEN CITY ENGINEER**  
I hereby certify that the requirements of all applicable laws, rules and regulations of the City of Ogden, Utah, have been met and that this plat and dedication have been approved by the Mayor of Ogden City of the day of April, 1997.  
Signed this 19th day of April, 1997.  
GODEN CITY ENGINEER  
GODEN CITY PLANNING COMMISSION  
Approved by the Ogden City Planning Commission on the 19th day of April, 1997.

**ODGEN CITY APPROVAL**  
This is to certify that this plat and dedication of this land were duly approved and accepted by the Mayor of Ogden City, Utah on the 19th day of April, 1997.  
Sylvia Walker, Chair

**WEBER COUNTY RECORDER**  
I have recorded this plat in the public records of the County of Weber, Utah, on the 19th day of April, 1997.  
Doris Gilberts, Recorder