

**BASIS OF BEARINGS**

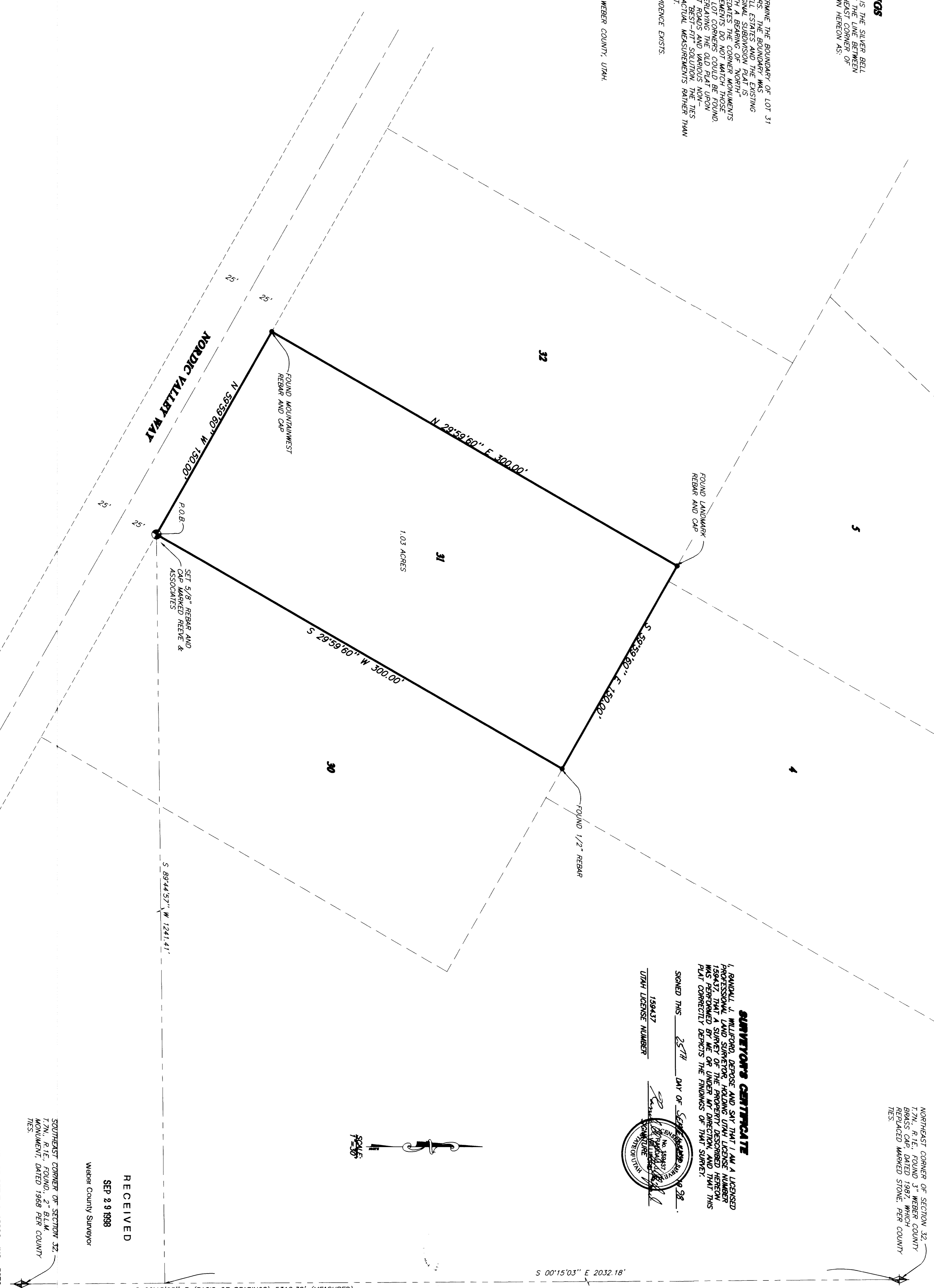
THE BASIS OF BEARINGS FOR THIS PLAT IS THE SILVER BELL SUBDIVISION AS DETERMINED LOCALLY BY THE LINE BETWEEN THE NORTHEAST CORNER AND THE SOUTH BOUNDARY OF SECTION 12, T.2N., R.1E., S.18M., S.18M. HERON AS 500°15'03"W

**NARRATIVE**

THE PURPOSE OF THIS PLAT IS TO DETERMINE THE BOUNDARY OF LOT 31 SILVER BELL ESTATES FOR THE SPOUTERS. THE BOUNDARY WAS SETTING REBAR AT THE LOT CORNERS. THE ORIGINAL SUBDIVISION PLAT IS TIED TO ONLY ONE SECTION CORNER WITH A BEARING OF NORTH. BECAUSE THE AGE AND SUBDIVISION IMPROVEMENTS DO NOT MATCH THOSE MONUMENTS NO COMPATIBLE ORIGINAL LOT CORNERS COULD BE FOUND. THE BOUNDARY WAS DETERMINED BY OVERLAYING THE OLD PLAT WITH THE ORIGINAL LOT CORNERS AND SEEING A BEST-FIT SOLUTION. THE TIES TO THE SECTION CORNERS SHOWN ARE ACTUAL MEASUREMENTS RATHER THAN MEASUREMENTS FROM THE ORIGINAL PLAT. NO FENCES OR OTHER LOT LINE USE EVIDENCE EXISTS.

**DESCRIPTION**

ALL OF LOT 31, SILVER BELL ESTATES, WEBER COUNTY, UTAH. CONTAINS 1.03 ACRES



NORTHEAST CORNER OF SECTION 12, T.2N., R.1E., FOUND 3" WEBER COUNTY BRASS CAP, DATED 1987, WHICH REPLACED MARKED STONE, WEBER COUNTY TIES.

**SURVEYOR'S CERTIFICATE**

I, RANDALL J. WILBERD, DEPOSE AND SAY THAT I AM A LICENSED PROFESSIONAL LAND SURVEYOR, HOLDING UTAH LICENSE NUMBER 189437 THAT A SURVEY OF THE PROPERTY DESCRIBED HEREON WAS MADE BY ME OR UNDER MY SUPERVISION AND THAT THIS PLAT CORRECTLY DEPICTS THE FINDINGS OF THAT SURVEY.

SIGNED THIS 25<sup>TH</sup> DAY OF SEPTEMBER 1998.

189437  
UTAH LICENSE NUMBER

RECEIVED  
SEP 28 1998  
Weber County Surveyor

SOUTHWEST CORNER OF SECTION 32, T.2N., R.1E., FOUND 3" WEBER COUNTY BRASS CAP, DATED 1987, WHICH REPLACED MARKED STONE, WEBER COUNTY TIES.

S 00°15'03" E (BASIS OF BEARINGS) 5318.36' (MEASURED)  
S 00°03'22" E 5318.76' (RECORD, UTAH STATE PLANE 1983)

REVISIONS

1.		4.
2.		5.
3.		6.

PROJECT NO. 1171-01 SURVEYOR: AMBERG  
DATE: JULY 2, 1998 DRAWN: K. GIBBERD  
SCALE: 1"=50' CHECKED: \_\_\_\_\_

**REEVE & ASSOCIATES, INC.**  
ENGINEERS, PLANNERS & SURVEYORS  
5070 COOK DR., SUITE 101  
COURT HOUSE, UTAH 84401 827-2868  
TEL: (801) 827-3100 FAX: (801) 827-2868  
TOLL-FREE: 1-888-944-3100

**RECORD OF SURVEY**

**LOT 31 SILVER BELL ESTATES**  
PART OF THE NORTHEAST QUARTER SECTION 12, T.2N., R.1E., S.18M., S.18M. HERON, WEBER COUNTY, UTAH, AS SHOWN ON PLAT DATED JULY 1988

SHEET 1 OF 1 SHEETS