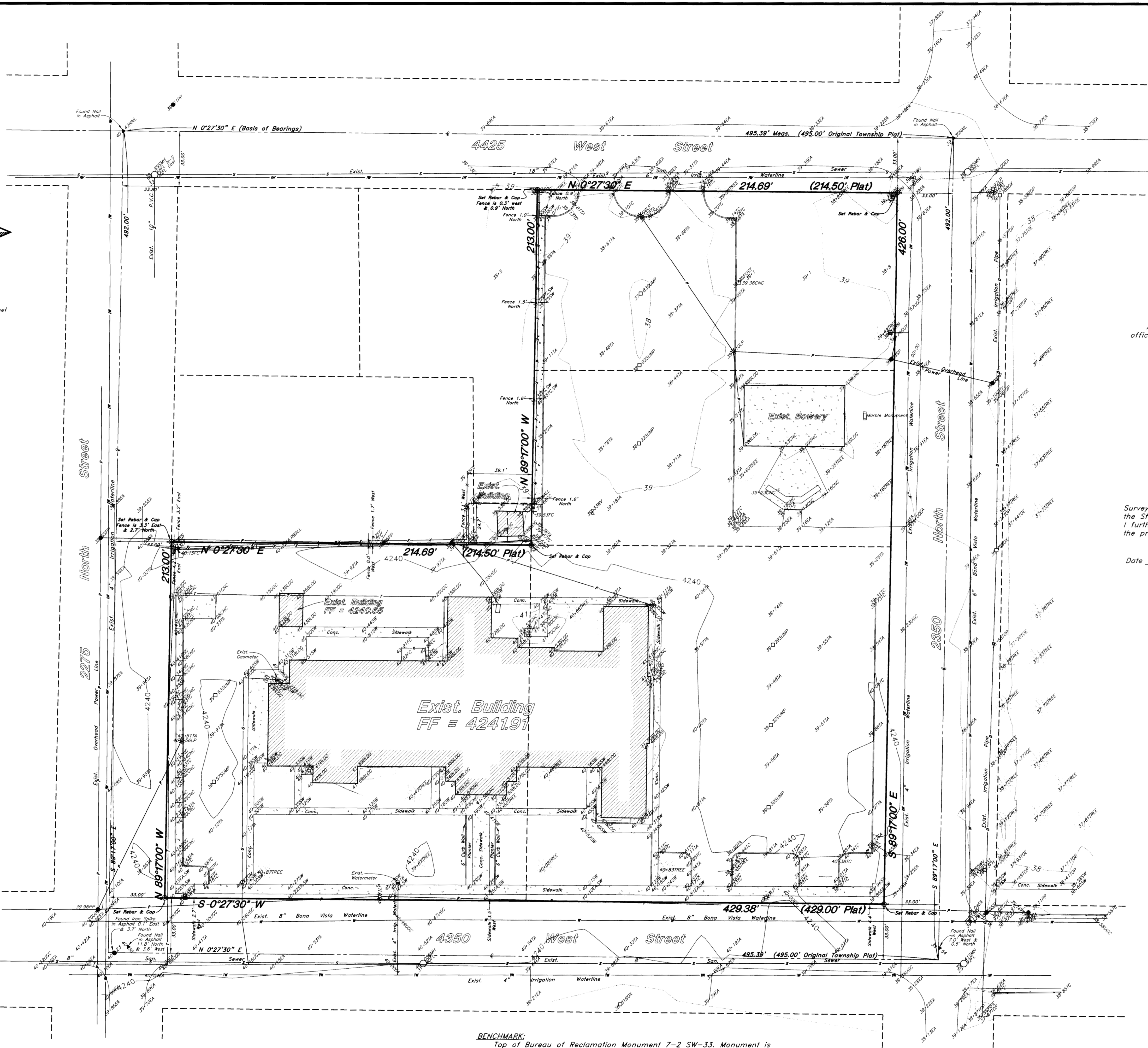


002080

002080

002080

002080



Scale : 1" = 30'

- ▲ Set Nail in Curb
- Set Rebar & Cap w/ Fencepost
- Set Hub & Tack
- ⊙ Monument to be set
- (Rad.) Radial Line
- (N/R) Non-Radial Line

**Narrative**

This Survey was requested by Mr. Bret Richards from Jones/Richards in behalf of the L.D.S. Church for the purpose of establishing the boundary and getting Topography of the site. Nails were found at the intersections of 2275 North Street & 4425 West Street and 2350 North Street & 4425 West Street and were used for control. A line bearing North 0°27'30" East (Original Township Bearing) between the Nails was used as the Basis of Bearings. Property corners were monumented as shown on this drawing.

**Description**

All of Lots 1, 3, & 4, Block 5, Plain City, Plat "A" According to the official plat thereof.  
Contains 3.149 Acres

**Certification**

I, Gary L. Newman, do hereby certify that I am a Registered Land Surveyor, and that I hold Certificate No. 4778, as prescribed by the Laws of the State of Utah, and I have made a survey of the above described property. I further certify that the above plat correctly shows the true dimensions of the property surveyed.

Date 9-11-98



**LEGEND**

- |   |   |       |                      |
|---|---|-------|----------------------|
| ○ | San. Sewer Manhole                        | TA    | Top of Asphalt       |
| □ | Cleanout Box                              | EA    | Edge of Asphalt      |
| ⊕ | Fire Hydrant                              | —     | Centerline           |
| ⊗ | Water Valve                               | SP    | Service Pole         |
| — | Buried Phone Cable                        | LP    | Light Pole           |
| — | Sanitary Sewer Line                       | PP    | Power Pole           |
| — | Culinary Water Line                       | —     | Flowline             |
| — | Gas Line                                  | 99.00 | Spot Elevation       |
| — | Storm Drain Line                          | —     | Contour              |
| — | Secondary Waterline                       | —     | Asphalt              |
| — | Land Drain Line                           | —     | Existing Building    |
| — | Utility marker                            | —     | Sump                 |
| — | Power Pole w/Guy                          | —     | Fire Hydrant         |
| — | Fence                                     | —     | centerline of Ditch  |
| — | Fire Hydrant                              | —     | TOE                  |
| — | Overhead Power, Telephone & Cable TV Line | —     | Top of Slope         |
| — | Corrugated Metal Pipe                     | —     | Under Ground Utility |
| — | R.C.P.                                    | —     | UCC                  |
| — | Reinforced Concrete Pipe                  | —     | FNC                  |
| — | Top of Curb                               | —     | WMH                  |
| — | Sidewalk                                  | —     | Water Manhole        |
| — | SMH                                       | —     | Gas Line Marker      |
| — | Sewer Manhole                             | —     | FF                   |
| — | Water Valve                               | —     | Finished Floor       |
| — | Water meter                               | —     |                      |
| — | Gas meter                                 | —     |                      |

**BENCHMARK:**  
Top of Bureau of Reclamation Monument 7-2 SW-33. Monument is located approximately 75 feet North of intersection of 4210 West & 1975 North Street at an Irrigation Ditch Crossing. Brass cap is set in wall of concrete Irrigation Structure on North side of 4210 West Street, 4 feet Northeast of Power Pole. Elev. 4239.95

**TEMP. BENCHMARK:**  
Top of North Cap Bolt on Fire Hydrant at the Northwest Corner of the Intersection of 4350 West & 2275 North Streets in Plain City. Elev. 4242.35

**"Caution"**  
The Location and/or elevation of existing utilities as shown on these plans is based on records of the various utility companies and, where possible, measurements taken in the field. The information is not to be relied on as being exact or complete.

RECEIVED  
NOV 17 1998  
Weber County Surveyor

**Topographical & Property Survey**

**GREAT BASIN ENGINEERING, INC.**  
CONSULTING ENGINEERS and SURVEYORS  
3544 Lincoln Avenue, Ogden, Utah, 84401  
P.O. Box 9307, Ogden, Utah, 84409  
Ogden (801)394-4515 Salt Lake City (801)521-0222 Fax (801)392-7544

**L.D.S. Church**  
A part of Block 5, Plain City, Plat A  
A part of the S.E. 1/4 of Section 32, T7N, R2W, SLB&M  
Plain City, Weber County, Utah

SCALE: 1" = 30'  
DATE: 9 Feb, 1998  
DRAWN: AH  
REVISIONS: 27 Mar, 1998  
97-83  
11 May, 1998  
11 Sep, 1998

DRWG. NO. PS-97-83