

NARRATIVE
This Survey was requested by Mr. Bret Richards of Jones, Richards & Co., Inc. for the purpose of establishing boundaries and easements for a new chapel. This site had been previously surveyed by Great Basin in 1984. Brass egg monuments were found at the center of cut-decker on 1550 North Street as picked as in Hunting Creek No. 5. Property corners were established as shown on this drawing.

BOUNDARY DESCRIPTION
A part of the Southwest Quarter of the Northwest Quarter of Section 5, Township 6 North, Range 1 West, Salt Lake Base and Meridian, U.S. Survey, which is 948.60 feet North 0°28'10" East and 1725.00 feet East of the West Quarter corner of said Section 5; thence South 89°27'00" East 413.84 feet to an existing fence line; thence South 26.20 feet to an existing fence line; thence South 28.20 feet to an existing fence line; thence South 84°00'29" West 17.24 feet to the Northwest corner of Lot 55, Hunting Creek No. 2; thence South 84°00'29" West 287.38 feet; thence South 43.00 feet; thence West 111.63 feet to the point of beginning.

SURVEYOR'S CERTIFICATE

I, Gary L. Newson, do hereby certify that I am a Registered Professional Engineer in the State of Utah, and I have made a survey of the above described property, and I further certify that the above plat correctly shows the true dimensions of the property surveyed.

Date - 16-10-98

Gary L. Newson
Professional Engineer
No. 17388

RECEIVED
NOV 17 1998
Weber County Surveyor

WELDER COUNTY SURVEYOR

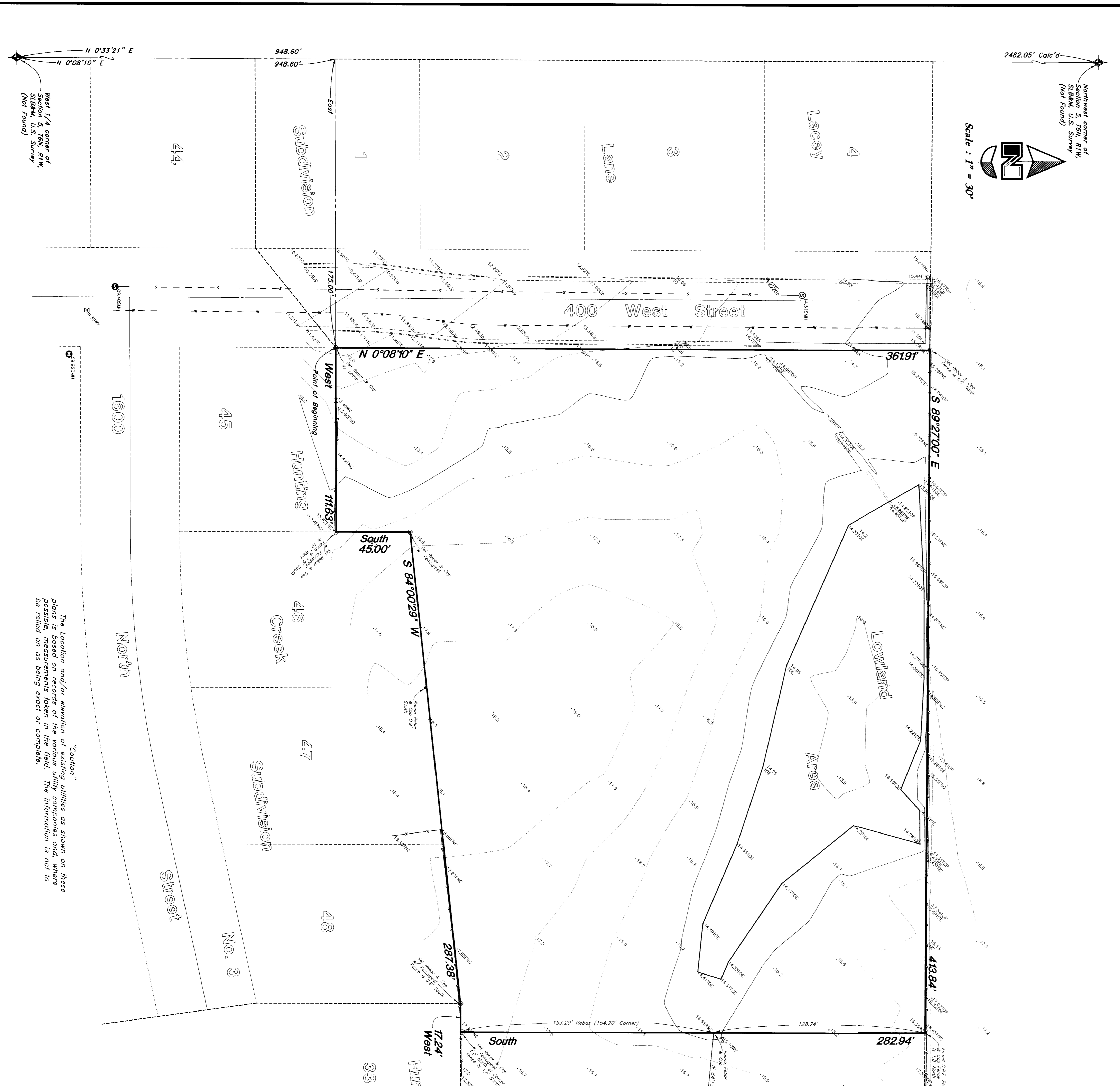
Topographic Survey

GREAT BASIN ENGINEERING, INC.
3541 S. 2000 W. Suite 100
Ogden, Utah 84409
Phone: (801)338-4415 Fax: (801)338-7544

Scale: 1" = 30'
Date: 1 Jun, 1998
Revisions: 20 Oct, 1998
PS-84-36

LDS Church - Hartsville
A part of the Southwest 1/4 of the Northwest 1/4 of Section 5, 15N, 1W, S18&M, U.S. Survey
Huntsville, Weber County, Utah

- LEGEND**
- 14 Edge of Asphalt
 - 15 Edge of Asphalt
 - 16 Service Pole
 - 17 Fire Hydrant
 - 18 Fire Hydrant
 - 19 Fire Hydrant
 - 20 Fire Hydrant
 - 21 Fire Hydrant
 - 22 Fire Hydrant
 - 23 Fire Hydrant
 - 24 Fire Hydrant
 - 25 Fire Hydrant
 - 26 Fire Hydrant
 - 27 Fire Hydrant
 - 28 Fire Hydrant
 - 29 Fire Hydrant
 - 30 Fire Hydrant
 - 31 Fire Hydrant
 - 32 Fire Hydrant
 - 33 Fire Hydrant
 - 34 Fire Hydrant
 - 35 Fire Hydrant
 - 36 Fire Hydrant
 - 37 Fire Hydrant
 - 38 Fire Hydrant
 - 39 Fire Hydrant
 - 40 Fire Hydrant
 - 41 Fire Hydrant
 - 42 Fire Hydrant
 - 43 Fire Hydrant
 - 44 Fire Hydrant
 - 45 Fire Hydrant
 - 46 Fire Hydrant
 - 47 Fire Hydrant
 - 48 Fire Hydrant
 - 49 Fire Hydrant
 - 50 Fire Hydrant
 - 51 Fire Hydrant
 - 52 Fire Hydrant
 - 53 Fire Hydrant
 - 54 Fire Hydrant
 - 55 Fire Hydrant
 - 56 Fire Hydrant
 - 57 Fire Hydrant
 - 58 Fire Hydrant
 - 59 Fire Hydrant
 - 60 Fire Hydrant
 - 61 Fire Hydrant
 - 62 Fire Hydrant
 - 63 Fire Hydrant
 - 64 Fire Hydrant
 - 65 Fire Hydrant
 - 66 Fire Hydrant
 - 67 Fire Hydrant
 - 68 Fire Hydrant
 - 69 Fire Hydrant
 - 70 Fire Hydrant
 - 71 Fire Hydrant
 - 72 Fire Hydrant
 - 73 Fire Hydrant
 - 74 Fire Hydrant
 - 75 Fire Hydrant
 - 76 Fire Hydrant
 - 77 Fire Hydrant
 - 78 Fire Hydrant
 - 79 Fire Hydrant
 - 80 Fire Hydrant
 - 81 Fire Hydrant
 - 82 Fire Hydrant
 - 83 Fire Hydrant
 - 84 Fire Hydrant
 - 85 Fire Hydrant
 - 86 Fire Hydrant
 - 87 Fire Hydrant
 - 88 Fire Hydrant
 - 89 Fire Hydrant
 - 90 Fire Hydrant
 - 91 Fire Hydrant
 - 92 Fire Hydrant
 - 93 Fire Hydrant
 - 94 Fire Hydrant
 - 95 Fire Hydrant
 - 96 Fire Hydrant
 - 97 Fire Hydrant
 - 98 Fire Hydrant
 - 99 Fire Hydrant
 - 100 Fire Hydrant



Northwest corner of Section 5, 15N, 1W, S18&M, U.S. Survey (Not Found)
Scale: 1" = 30'

North 0°28'10" East
948.60'

Point of Beginning
West
South 45.00'

1600 North Street
Hunting Creek
Subdivision No. 2

1550 North Street
Hunting Creek
Subdivision No. 5