

DRAWING NUMBER

002119

PLAN HOLD CORPORATION • IRVINE, CALIFORNIA  
REORDER BY NUMBER 075AR

DRAWING NUMBER

002119

PLAN HOLD CORPORATION • IRVINE, CALIFORNIA  
REORDER BY NUMBER 075AR

DRAWING NUMBER

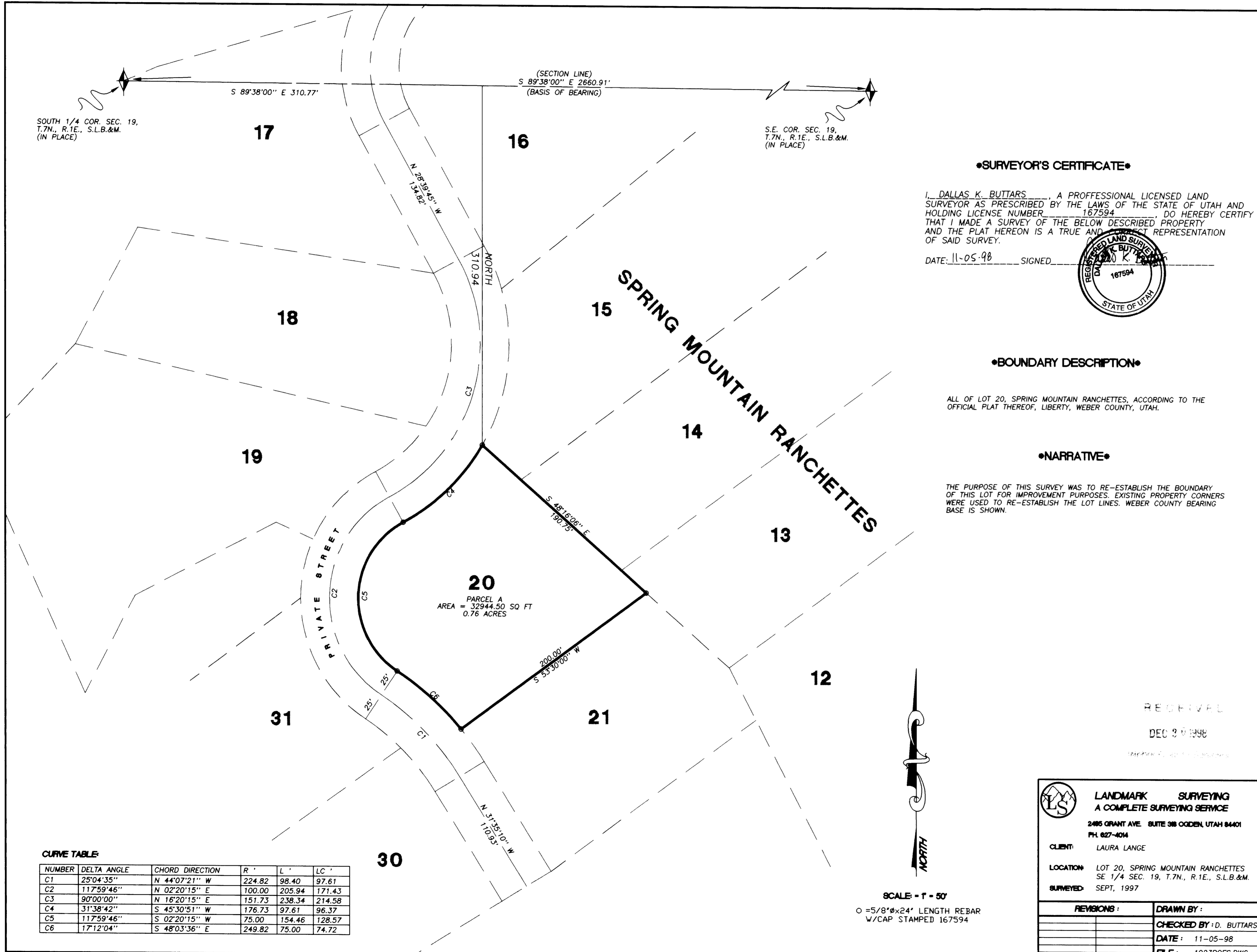
002119

PLAN HOLD CORPORATION • IRVINE, CALIFORNIA  
REORDER BY NUMBER 075AR

DRAWING NUMBER

002119

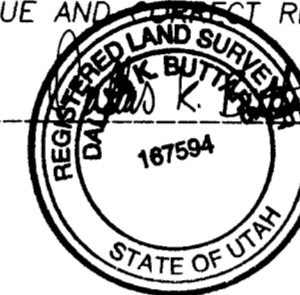
PLAN HOLD CORPORATION • IRVINE, CALIFORNIA  
REORDER BY NUMBER 075AR



•SURVEYOR'S CERTIFICATE•

I, DALLAS K. BUTTARS, A PROFESSIONAL LICENSED LAND SURVEYOR AS PRESCRIBED BY THE LAWS OF THE STATE OF UTAH AND HOLDING LICENSE NUMBER 167594 DO HEREBY CERTIFY THAT I MADE A SURVEY OF THE BELOW DESCRIBED PROPERTY AND THE PLAT HEREON IS A TRUE AND CORRECT REPRESENTATION OF SAID SURVEY.

DATE: 11-05-98 SIGNED:



•BOUNDARY DESCRIPTION•

ALL OF LOT 20, SPRING MOUNTAIN RANCHETTES, ACCORDING TO THE OFFICIAL PLAT THEREOF, LIBERTY, WEBER COUNTY, UTAH.

•NARRATIVE•

THE PURPOSE OF THIS SURVEY WAS TO RE-ESTABLISH THE BOUNDARY OF THIS LOT FOR IMPROVEMENT PURPOSES. EXISTING PROPERTY CORNERS WERE USED TO RE-ESTABLISH THE LOT LINES. WEBER COUNTY BEARING BASE IS SHOWN.

RECEIVED

DEC 8 1998



LANDMARK SURVEYING  
A COMPLETE SURVEYING SERVICE

2485 GRANT AVE SUITE 308 OGDEN, UTAH 84401

PH: 827-4014

CLIENT: LAURA LANGE

LOCATION: LOT 20, SPRING MOUNTAIN RANCHETTES  
SE 1/4 SEC. 19, T.7N., R.1E., S.L.B.&M.

SURVEYED: SEPT, 1997

REVISIONS:

DRAWN BY:

CHECKED BY: D. BUTTARS

DATE: 11-05-98

FILE: 1923ROFS.DWG

SCALE = 1" = 50'  
O = 5/8" x 24" LENGTH REBAR  
W/CAP STAMPED 167594

002119

002119