

Green Hill Country Estates Phase No. 6

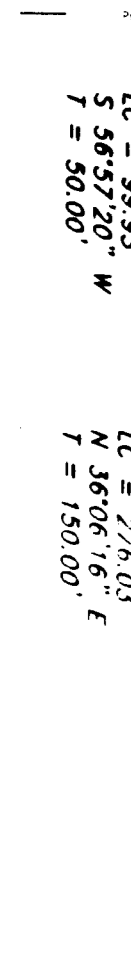
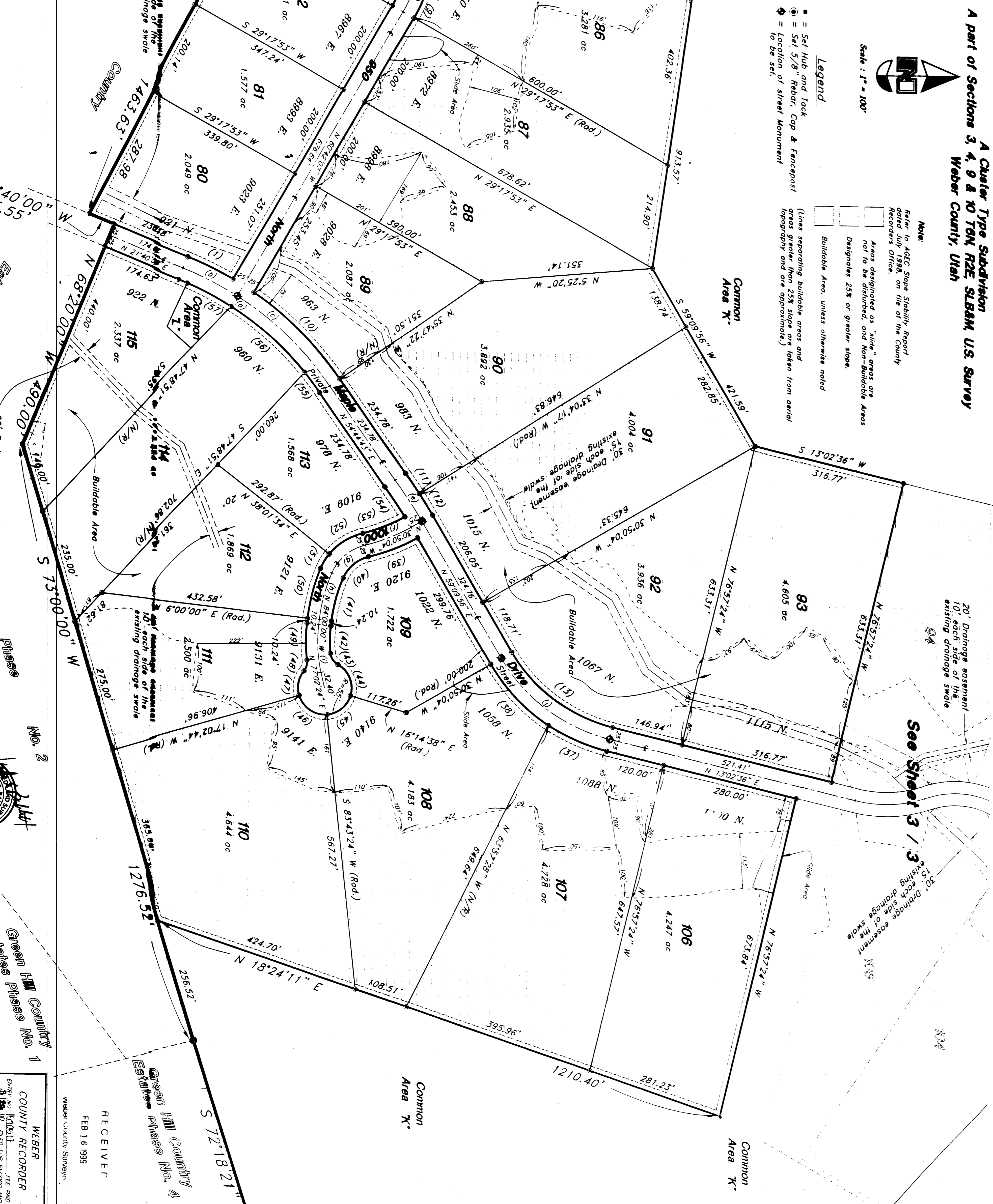
A Cluster Type Subdivision
A part of Sections 3, 4, 9 & 10 T6N, R2E, S18M, U.S. Survey
Weber County, Utah

Property Line Curve Data

| | | | |
|------------------|------------------|------------------|------------------|
| (10) A = 818.12' | (10) A = 290.97' | (48) A = 407.13' | (34) A = 117.34' |
| R = 698.42' | L = 698.42' | L = 407.13' | L = 117.34' |
| L = 101.22' | L = 251.97' | L = 21.89' | L = 21.89' |
| S = 55.89'06" W | S = 47.22'40" W | S = 74.71'02" W | S = 45.53'00" W |
| (11) A = 211.10' | (12) A = 211.10' | (13) A = 211.10' | (14) A = 211.10' |
| R = 211.10' | R = 211.10' | R = 211.10' | R = 211.10' |
| L = 211.10' | L = 211.10' | L = 211.10' | L = 211.10' |
| S = 59.50'12" W | S = 59.50'12" W | S = 59.50'12" W | S = 59.50'12" W |
| (15) A = 211.10' | (16) A = 211.10' | (17) A = 211.10' | (18) A = 211.10' |
| R = 211.10' | R = 211.10' | R = 211.10' | R = 211.10' |
| L = 211.10' | L = 211.10' | L = 211.10' | L = 211.10' |
| S = 59.50'12" W | S = 59.50'12" W | S = 59.50'12" W | S = 59.50'12" W |

Street Centerline Curve Data

| | | | |
|-----------------|-----------------|-----------------|-----------------|
| (a) A = 319.45' | (b) A = 161.91' | (c) A = 161.91' | (d) A = 161.91' |
| R = 638.90' | L = 161.91' | L = 161.91' | L = 161.91' |
| L = 161.91' | L = 161.91' | L = 161.91' | L = 161.91' |
| S = 31.72'24" W | S = 31.72'24" W | S = 31.72'24" W | S = 31.72'24" W |
| (e) A = 102.72' | (f) A = 511.39' | (g) A = 511.39' | (h) A = 511.39' |
| R = 613.44' | R = 511.39' | R = 511.39' | R = 511.39' |
| L = 102.72' | L = 511.39' | L = 511.39' | L = 511.39' |
| S = 25.51'41" W | S = 25.51'41" W | S = 25.51'41" W | S = 25.51'41" W |



Scale: 1" = 100'

Legend

- = Set Hub and Tack
- ⊙ = Set 5/8" Rebar, Cap & Fencpost
- ⊕ = Location of Street Monument
- = Buildable Area unless otherwise noted
- = Areas designated as "High" areas are not to be disturbed, and non-buildable areas are to be maintained.
- = Areas separating buildable areas and areas greater than 25% slope are taken from aerial topography and are approximate.

NOTE: Refer to AGC Slope Stability Report dated July 1998, on file at the County Recorder's Office.

Buildable Area unless otherwise noted

Areas designated as "High" areas are not to be disturbed, and non-buildable areas are to be maintained.

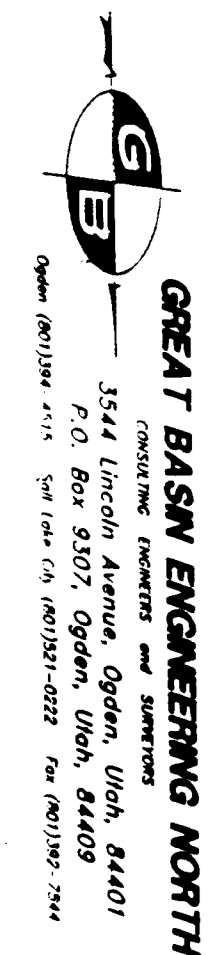
Areas separating buildable areas and areas greater than 25% slope are taken from aerial topography and are approximate.

RECEIVED FEB 16 1999

WEBER COUNTY RECORDER

002160

002160 002160



GREAT BASIN ENGINEERING NORTH, INC.
51st Linden Avenue, Ogden, Utah 84401
PH: 801-226-8888 FAX: 801-226-8889
WWW.GREATBASINENGINEERING.COM

Property Line Curve Data

| | | |
|-------------------|-------------------|-------------------|
| (14) A = 1053.23" | (21) A = 5114.58" | (32) A = 5298.24" |
| L = 142.87" | L = 55.00" | L = 92.66" |
| LC = 274.08" | LC = 51.12" | LC = 83.19" |
| N 57°13'33" W | N 57°13'33" W | N 48°44'50" E |
| (15) A = 2814.45" | (22) A = 5821.41" | (33) A = 8296.52" |
| L = 189.01" | L = 55.00" | L = 895.52" |
| LC = 378.02" | LC = 51.12" | LC = 83.19" |
| N 89°11'17" E | N 57°13'33" W | S 74°28'27" E |
| (16) A = 1821.12" | (23) A = 5404.17" | (34) A = 1115.52" |
| L = 189.01" | L = 55.00" | L = 388.52" |
| LC = 378.02" | LC = 51.12" | LC = 83.19" |
| N 89°11'17" E | N 57°13'33" W | N 35°41'09" W |
| (17) A = 603.56" | (24) A = 6420.12" | (35) A = 4637.55" |
| L = 425.52" | L = 55.00" | L = 150.00" |
| LC = 851.04" | LC = 51.12" | LC = 117.96" |
| N 35°41'09" W | N 35°41'09" W | S 34°25'04" W |
| (18) A = 1438.28" | (25) A = 4818.27" | (36) A = 5025.22" |
| L = 425.52" | L = 46.57" | L = 159.83" |
| LC = 851.04" | LC = 46.57" | LC = 159.83" |
| N 42°10'18" W | N 42°10'18" E | N 29°19'50" E |
| (19) A = 1128.19" | (26) A = 4818.27" | (37) A = 5025.22" |
| L = 189.01" | L = 46.57" | L = 159.83" |
| LC = 378.02" | LC = 46.57" | LC = 159.83" |
| N 42°10'18" W | N 42°10'18" E | N 29°19'50" E |
| (20) A = 847.24" | (27) A = 1028.14" | (38) A = 1175.52" |
| L = 202.46" | L = 1028.14" | L = 388.52" |
| LC = 404.92" | LC = 404.92" | LC = 83.19" |
| N 202°46'00" W | N 202°46'00" W | N 35°41'09" W |
| (21) A = 1028.14" | (28) A = 5473.74" | (39) A = 4637.55" |
| L = 1028.14" | L = 55.00" | L = 150.00" |
| LC = 2056.28" | LC = 51.12" | LC = 117.96" |
| N 35°41'09" W | N 35°41'09" W | S 34°25'04" W |
| (22) A = 4920.17" | (29) A = 6220.12" | (40) A = 4637.55" |
| L = 28.01" | L = 55.00" | L = 150.00" |
| LC = 56.02" | LC = 51.12" | LC = 117.96" |
| N 110°12'00" E | N 57°13'33" W | S 34°25'04" W |
| (23) A = 4920.17" | (30) A = 5473.74" | (41) A = 4637.55" |
| L = 28.01" | L = 55.00" | L = 150.00" |
| LC = 56.02" | LC = 51.12" | LC = 117.96" |
| N 110°12'00" E | N 57°13'33" W | S 34°25'04" W |
| (24) A = 4920.17" | (31) A = 6220.12" | (42) A = 4637.55" |
| L = 28.01" | L = 55.00" | L = 150.00" |
| LC = 56.02" | LC = 51.12" | LC = 117.96" |
| N 110°12'00" E | N 57°13'33" W | S 34°25'04" W |

Street Centerline Curve Data

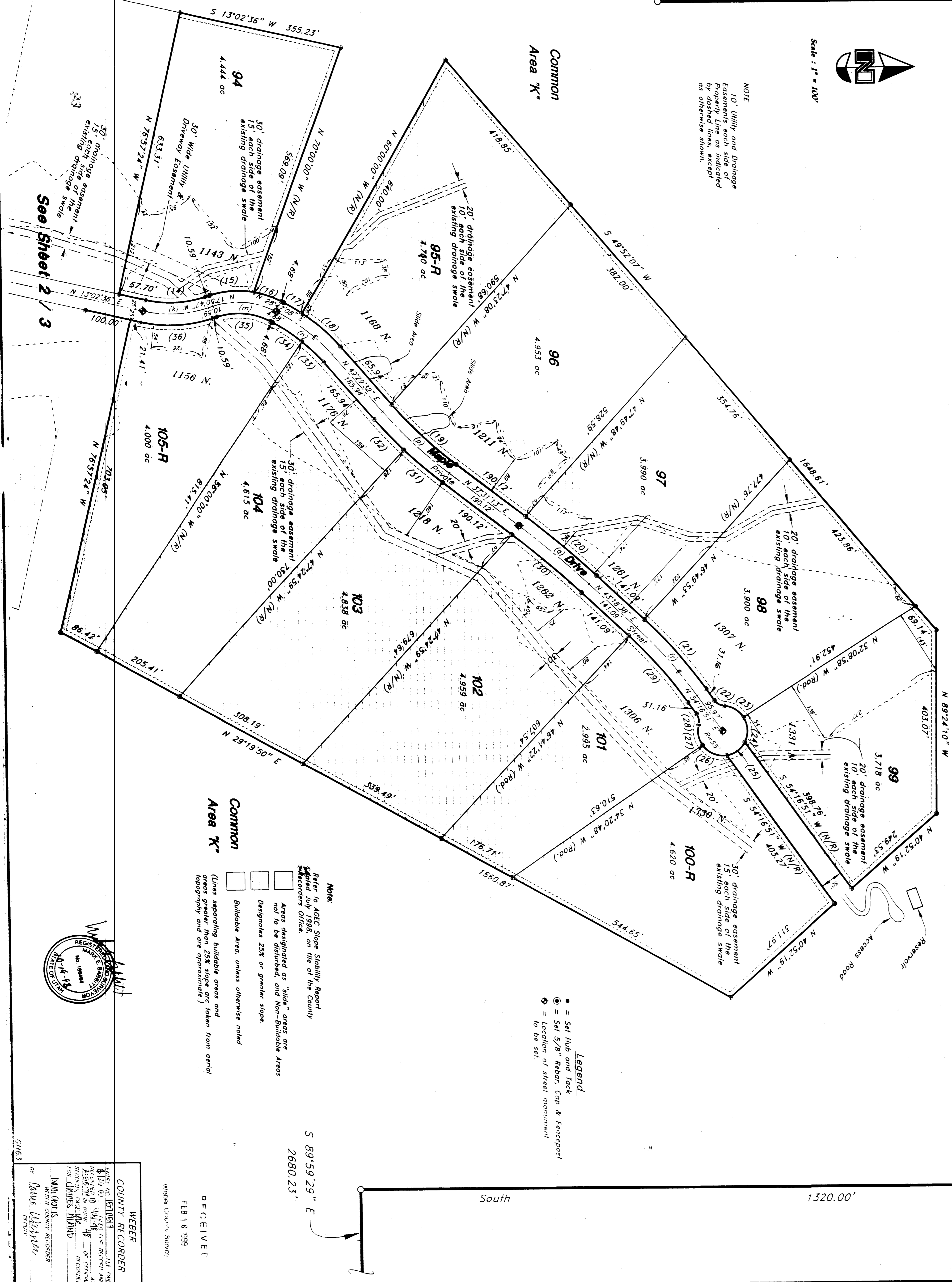
| | |
|------------------|-------------------|
| (A) A = 3025.32" | (F) A = 11948.19" |
| L = 146.58" | L = 146.58" |
| LC = 293.16" | LC = 146.58" |
| N 41°02'23" E | N 41°02'23" E |
| T = 75.00" | T = 75.00" |
| (B) A = 4637.55" | (G) A = 5473.74" |
| L = 174.01" | L = 182.72" |
| LC = 348.02" | LC = 182.72" |
| N 13°02'36" W | N 13°02'36" W |
| T = 75.00" | T = 75.00" |
| (C) A = 3025.32" | (H) A = 1028.14" |
| L = 146.58" | L = 1028.14" |
| LC = 293.16" | LC = 1028.14" |
| N 41°02'23" E | N 41°02'23" E |
| T = 75.00" | T = 75.00" |
| (D) A = 4637.55" | (I) A = 5473.74" |
| L = 174.01" | L = 182.72" |
| LC = 348.02" | LC = 182.72" |
| N 13°02'36" W | N 13°02'36" W |
| T = 75.00" | T = 75.00" |
| (E) A = 3025.32" | (J) A = 1028.14" |
| L = 146.58" | L = 1028.14" |
| LC = 293.16" | LC = 1028.14" |
| N 41°02'23" E | N 41°02'23" E |
| T = 75.00" | T = 75.00" |

Common Area "K"

Note:
 Refer to AGC Slope Stability Report dated July 1998 on file of the County Recorder's Office.
 Areas designated as "Side" areas are not to be subdivided, and non-Buildable Areas Designates 25% or greater slope.
 Buildable Area, unless otherwise noted
 (Lines showing buildable areas and areas greater than 25% slope are taken from aerial topography and are approximate.)

Legend
 ■ = Set Hub and Tack
 ⊙ = Set 5/8" Rubber Cap & Fencepost
 ⊕ = Location of street monument to be set.

NOTE
 10' Utility and Drainage Easements each side of Property Line as indicated by dashed lines, except as otherwise shown.



Green Hill Country Estates Phase No. 6
 A Cluster Type Subdivision
 A part of Sections 3, 4, 9, & 10, T8N R2E, S184M, U.S. Survey
 Weber County, Utah

WEBER COUNTY RECORDER
 JAMES D. JONES
 FEB 16 1999
 DECEIVED
 WEBER COUNTY SHERIFF
 DAVE WILKINSON