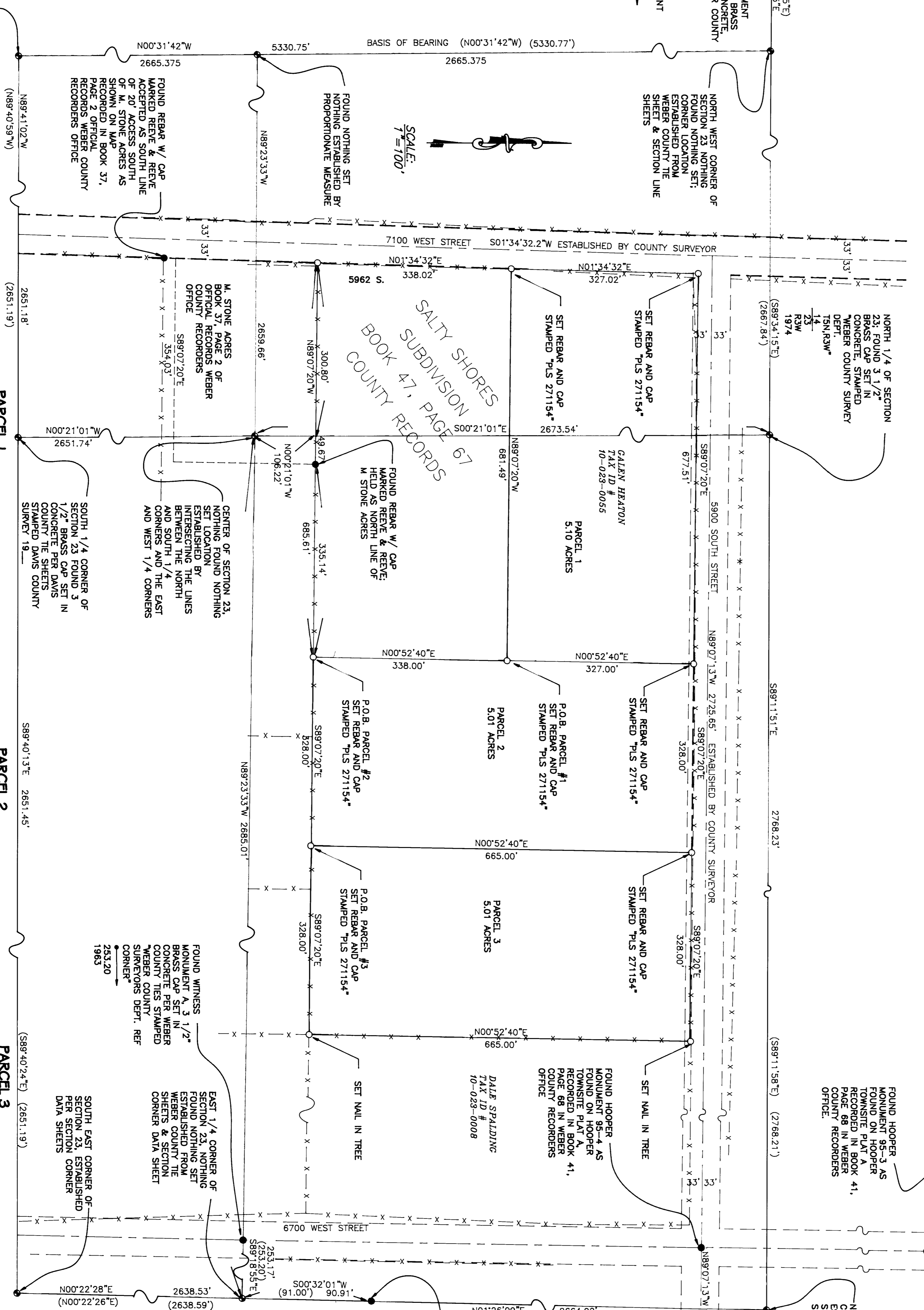


SECTION CORNER FOUND AS NOTED  
MONUMENTS FOUND AS NOTED  
MONUMENTS SET 5/8" REBAR W/ CAP STAMPED THIS 271154"

REAR LINE  
FRONT LINE  
RIGHT OF WAY LINE  
LOT LINE  
RECORD BEARING & DISTANCE AS RECORDED IN WEBER COUNTY RECORDERS OFFICE

**LEGEND**

SECTION CORNER FOUND AS NOTED  
MONUMENTS FOUND AS NOTED  
MONUMENTS SET 5/8" REBAR W/ CAP STAMPED THIS 271154"



**PARCEL 1**  
SOUTH 1/4 CORNER OF SECTION 23, T3N, R3W, S1/2 DAVIS COUNTY BRASS CAP SET IN PLACE PER WEBER COUNTY RECORDS SHEETS 271154 & 271155

**PARCEL 2**  
SOUTH 1/4 CORNER OF SECTION 23, T3N, R3W, S1/2 DAVIS COUNTY BRASS CAP SET IN PLACE PER WEBER COUNTY RECORDS SHEETS 271154 & 271155

**PARCEL 3**  
SOUTH 1/4 CORNER OF SECTION 23, T3N, R3W, S1/2 DAVIS COUNTY BRASS CAP SET IN PLACE PER WEBER COUNTY RECORDS SHEETS 271154 & 271155

**NARRATIVE**  
THE PURPOSE OF THIS PLAT IS TO BREAK UP AND DESCRIBE THE AGRICULTURAL PARCEL OWNED BY HEATON SURVEY, PARCEL 5 NORTH, RANGE 3 WEST, S1/4, T3N, R3W, SAID LINE BEARING AND DISTANCE AS SHOWN ON THE COUNTY SURVEY DATA SHEET.

**FOUNDATION**  
THE BASIS OF BEARING FOR THIS PLAT IS THE WEST LINE OF SECTION 23, TOWNSHIP 5 NORTH, RANGE 3 WEST, S1/4, T3N, R3W, SAID LINE BEARING AND DISTANCE AS SHOWN ON THE COUNTY SURVEY DATA SHEET.

**SURVEYORS CERTIFICATE**  
I, BRAD T. MORTENSEN, A REGISTERED PROFESSIONAL LAND SURVEYOR HOLDING CERTIFICATE NO. 1000, HAVE COMPILED AN ACCURATE MAP OF THIS PROPERTY, THAT IT IS A TRUE AND CORRECT REPRESENTATION BASED UPON A SURVEY PERFORMED ON THE GROUND AND DATA COMPILED FROM RECORDS IN THE WEBER COUNTY RECORDERS OFFICE.

SIGNED THIS 12th DAY OF FEBRUARY, 1999.

RECEIVED  
MAY 3 1999  
Weber County Surveyor

**RECORD OF SURVEY**

HEATON SURVEY  
6841 SOUTH 2350 WEST  
WEST JORDAN, UTAH

DRAWN BY: JS DATE: 12.9.98  
DESIGNED BY:  
CHECKED BY:  
APPROVED BY:  
SCALE: 1" = 30'  
DRAWING FILE: BRAD/DAVIS/RECORD  
JOB NUMBER: DAVIS

**BMI ASSOCIATES SURVEYING**

34 EAST 200 NORTH  
KAYSVILLE UT, 84037  
(801) 546-7462  
FAX (801) 546-1216

NO.	DATE	BY	REVISION