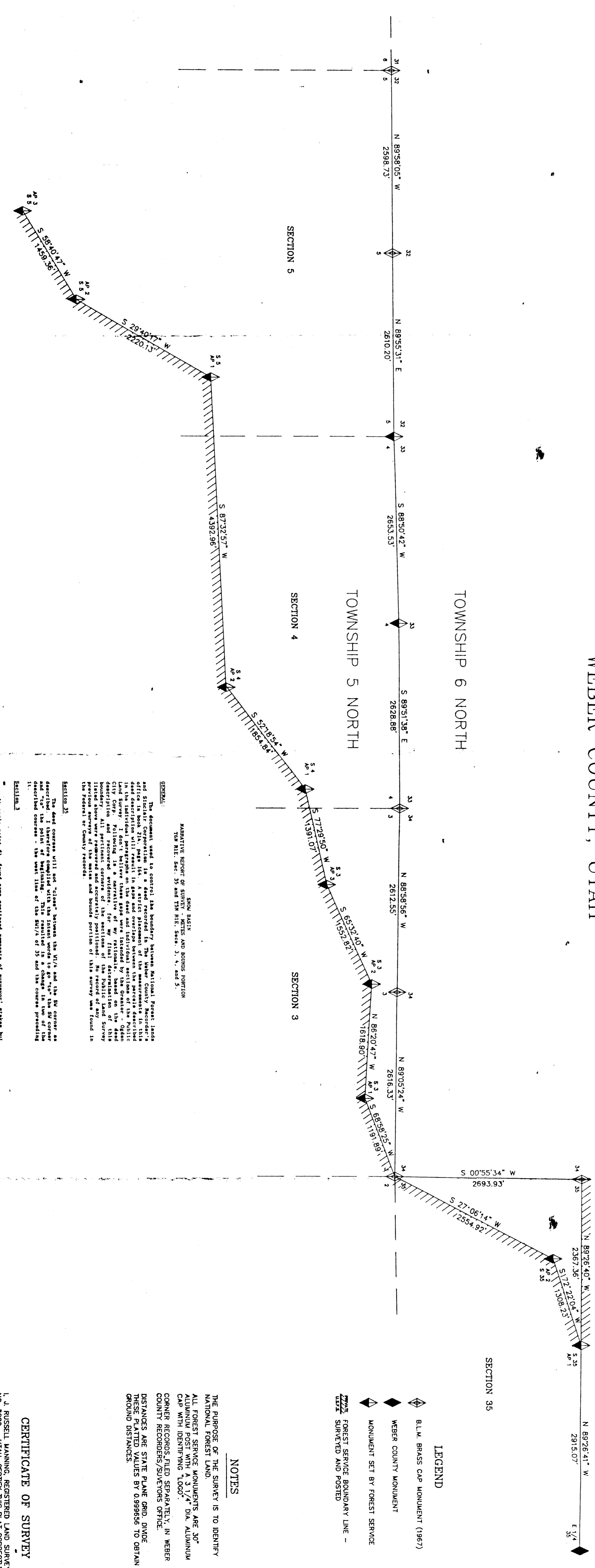


SURVEY OF NATIONAL FOREST BOUNDARY
 TOWNSHIP 5 & 6 NORTH RANGE 1 EAST SLM
 WEBER COUNTY, UTAH

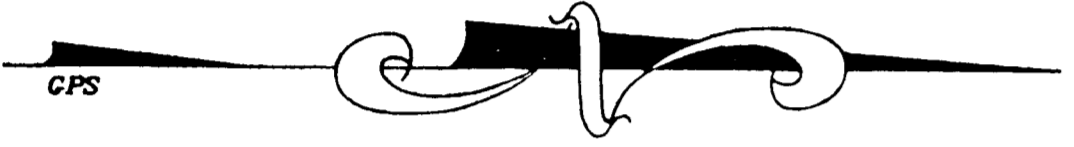


STATE PLANE COORDINATES

DESCRIPTION	NORTHING	EASTING
N 1/4 35	5802,634.60	1,813,853.72
S 1/4 35	5802,783.59	1,813,853.80
N 1/4 34	5802,611.85	1,813,821.05
S 1/4 34	5802,462.86	1,813,821.14
N 1/4 33	5802,490.11	1,813,788.30
S 1/4 33	5802,341.12	1,813,788.39
N 1/4 32	5802,168.37	1,813,755.55
S 1/4 32	5802,019.38	1,813,755.64
N 1/4 31	5801,846.62	1,813,722.71
S 1/4 31	5801,697.63	1,813,722.80
N 1/4 30	5801,524.87	1,813,689.87
S 1/4 30	5801,375.88	1,813,689.96
N 1/4 29	5801,203.12	1,813,656.94
S 1/4 29	5801,054.13	1,813,657.03
N 1/4 28	5800,881.37	1,813,624.01
S 1/4 28	5800,732.38	1,813,624.10
N 1/4 27	5800,559.61	1,813,591.08
S 1/4 27	5800,410.62	1,813,591.17
N 1/4 26	5800,237.85	1,813,558.15
S 1/4 26	5800,088.86	1,813,558.24
N 1/4 25	5800,116.10	1,813,525.22
S 1/4 25	5800,000.00	1,813,525.31

BASIS OF BEARING
 BEARINGS SHOWN ARE STATE PLANE GRID
 BEARINGS, UTM NORTH ZONE, NAD 83,
 ESTABLISHED BY GLOBAL POSITIONING SYSTEM

GRAPHIC SCALE
 1" = 700.0'



SECTION 35

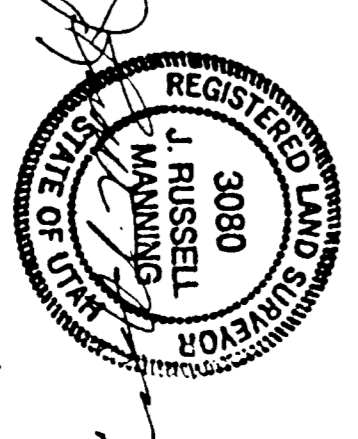
- LEGEND
- BLM BRASS CAP MONUMENT (1987)
 - WEBER COUNTY MONUMENT
 - MONUMENT SET BY FOREST SERVICE
 - FOREST SERVICE BOUNDARY LINE - 2000 SURVEYED AND POSTED

NOTES

THE PURPOSE OF THE SURVEY IS TO DENY NATIONAL FOREST LAND. ALL FOREST SERVICE MONUMENTS ARE 30" ALUMINUM POST WITH A 3/4" DIA. ALUMINUM CAP. COUNTY RECORDS/CLERK, WEBER COUNTY RECORDS/SURVEYORS OFFICE. BEARINGS ARE STATE PLANE GRID, DISTANCES ARE STATE PLANE GRID, DISTANCES. THESE PLAT VALUES BY 6,898.9' TO OBTAIN GROUND DISTANCES.

CERTIFICATE OF SURVEY

I, L. RUSSELL LANNING, REGISTERED LAND SURVEYOR, HEREBY CERTIFY THAT THE FOREST SERVICE BOUNDARY LINE SURVEY MADE BY ME OR UNDER MY DIRECTION AT THE REQUEST OF THE U.S. DEPT. OF AGRICULTURE - FOREST SERVICE.



RECEIVED
 MAR 2 1999
 WEBER COUNTY Surveyor

FOREST SERVICE
 REGION 4 WADSWORTH CIRCLE NATIONAL FOREST
 RECORD OF SURVEY
 NATIONAL FOREST BOUNDARY
 SNOW BASIN
 TOWNSHIP 5 & 6 NORTH RANGE 1 EAST
 SECTION 3, 4, 5 & 35
 SPLIT LANE BASE MENDIAN
 SURVEYED BY L. RUSSELL LANNING, REG. LAND SURVEYOR, NO. 9080, STATE OF UTAH
 DATE: MAR 2, 1999