

DRAWING NUMBER

002187

PLAN HOLD CORPORATION • IRVINE, CALIFORNIA
REORDER BY NUMBER 075AR

DRAWING NUMBER

002187

PLAN HOLD CORPORATION • IRVINE, CALIFORNIA
REORDER BY NUMBER 075AR

DRAWING NUMBER

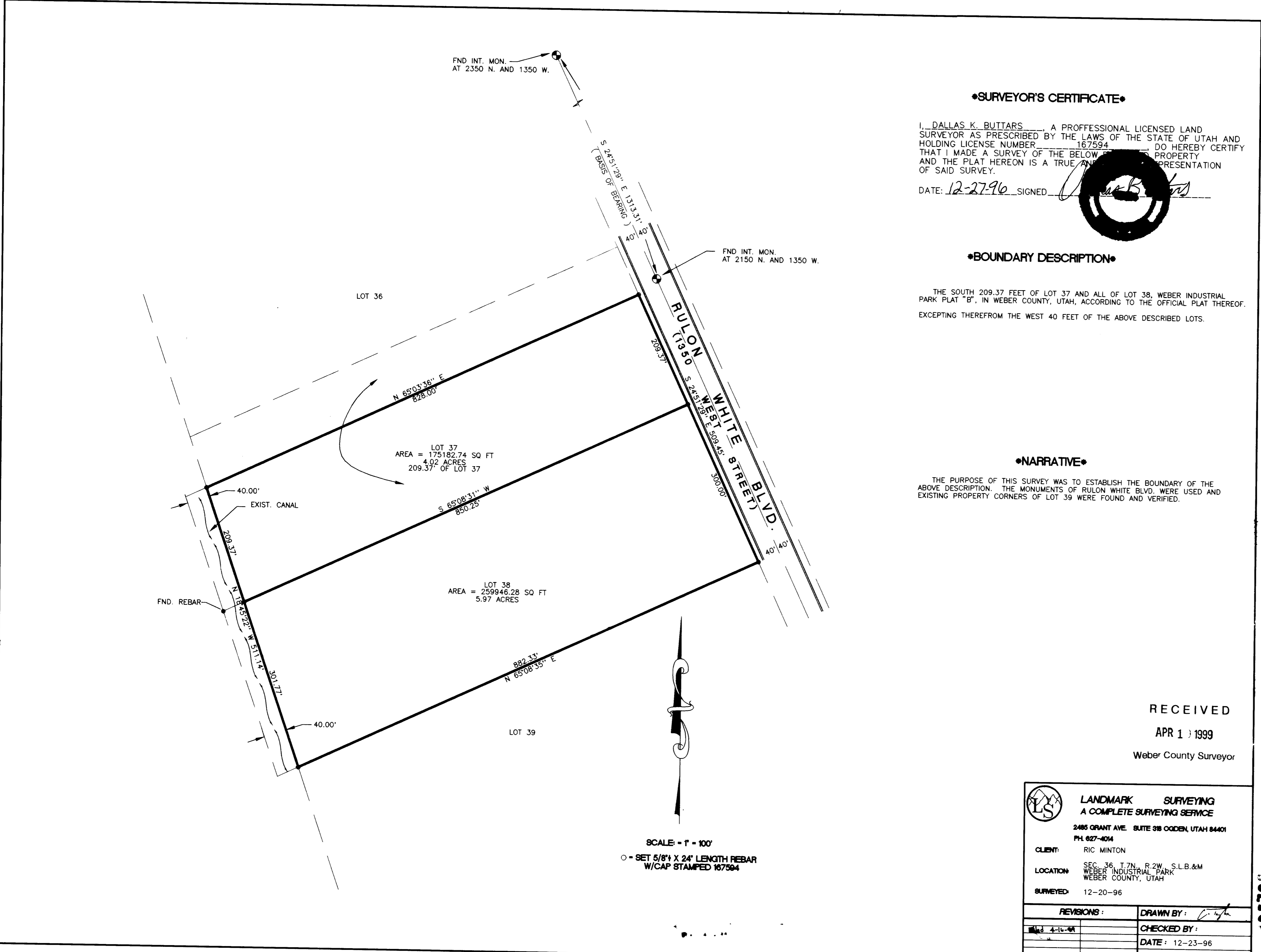
002187

PLAN HOLD CORPORATION • IRVINE, CALIFORNIA
REORDER BY NUMBER 075AR

DRAWING NUMBER

002187

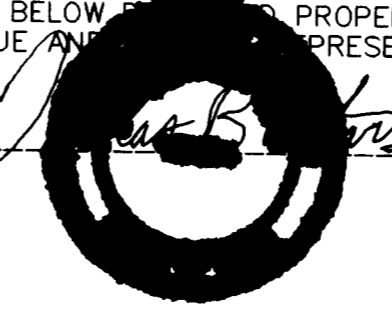
PLAN HOLD CORPORATION • IRVINE, CALIFORNIA
REORDER BY NUMBER 075AR



•SURVEYOR'S CERTIFICATE•

I, DALLAS K. BUTTARS, A PROFESSIONAL LICENSED LAND SURVEYOR AS PRESCRIBED BY THE LAWS OF THE STATE OF UTAH AND HOLDING LICENSE NUMBER 167594, DO HEREBY CERTIFY THAT I MADE A SURVEY OF THE ABOVE PROPERTY AND THE PLAT HEREON IS A TRUE AND ACCURATE REPRESENTATION OF SAID SURVEY.

DATE: 12-27-96 SIGNED: [Signature]



•BOUNDARY DESCRIPTION•

THE SOUTH 209.37 FEET OF LOT 37 AND ALL OF LOT 38, WEBER INDUSTRIAL PARK PLAT "B", IN WEBER COUNTY, UTAH, ACCORDING TO THE OFFICIAL PLAT THEREOF, EXCEPTING THEREFROM THE WEST 40 FEET OF THE ABOVE DESCRIBED LOTS.

•NARRATIVE•

THE PURPOSE OF THIS SURVEY WAS TO ESTABLISH THE BOUNDARY OF THE ABOVE DESCRIPTION. THE MONUMENTS OF RULON WHITE BLVD. WERE USED AND EXISTING PROPERTY CORNERS OF LOT 39 WERE FOUND AND VERIFIED.

RECEIVED

APR 1 1999

Weber County Surveyor

SCALE: 1" = 100'

○ = SET 5/8" X 24" LENGTH REBAR W/CAP STAMPED 167594

LANDMARK SURVEYING
A COMPLETE SURVEYING SERVICE
2485 GRANT AVE. SUITE 318 CODEN, UTAH 84401
PH: 627-4014

CLIENT: RIC MINTON
LOCATION: SEC. 36, T.7N., R.2W., S.L.B.&M. WEBER INDUSTRIAL PARK, WEBER COUNTY, UTAH
SURVEYED: 12-20-96

REVISIONS:	DRAWN BY: [Signature]
4-16-99	CHECKED BY:
	DATE: 12-23-96
	FILE: 1809BFIN.DWG

002187

002187

002187