

DRAWING NUMBER

002207

PLAN HOLD CORPORATION • IRVINE, CALIFORNIA  
REORDER BY NUMBER 075AR

DRAWING NUMBER

002207

PLAN HOLD CORPORATION • IRVINE, CALIFORNIA  
REORDER BY NUMBER 075AR

DRAWING NUMBER

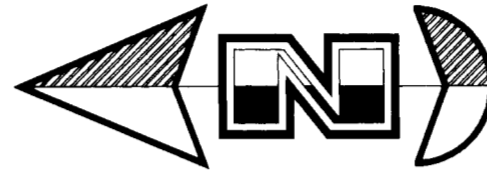
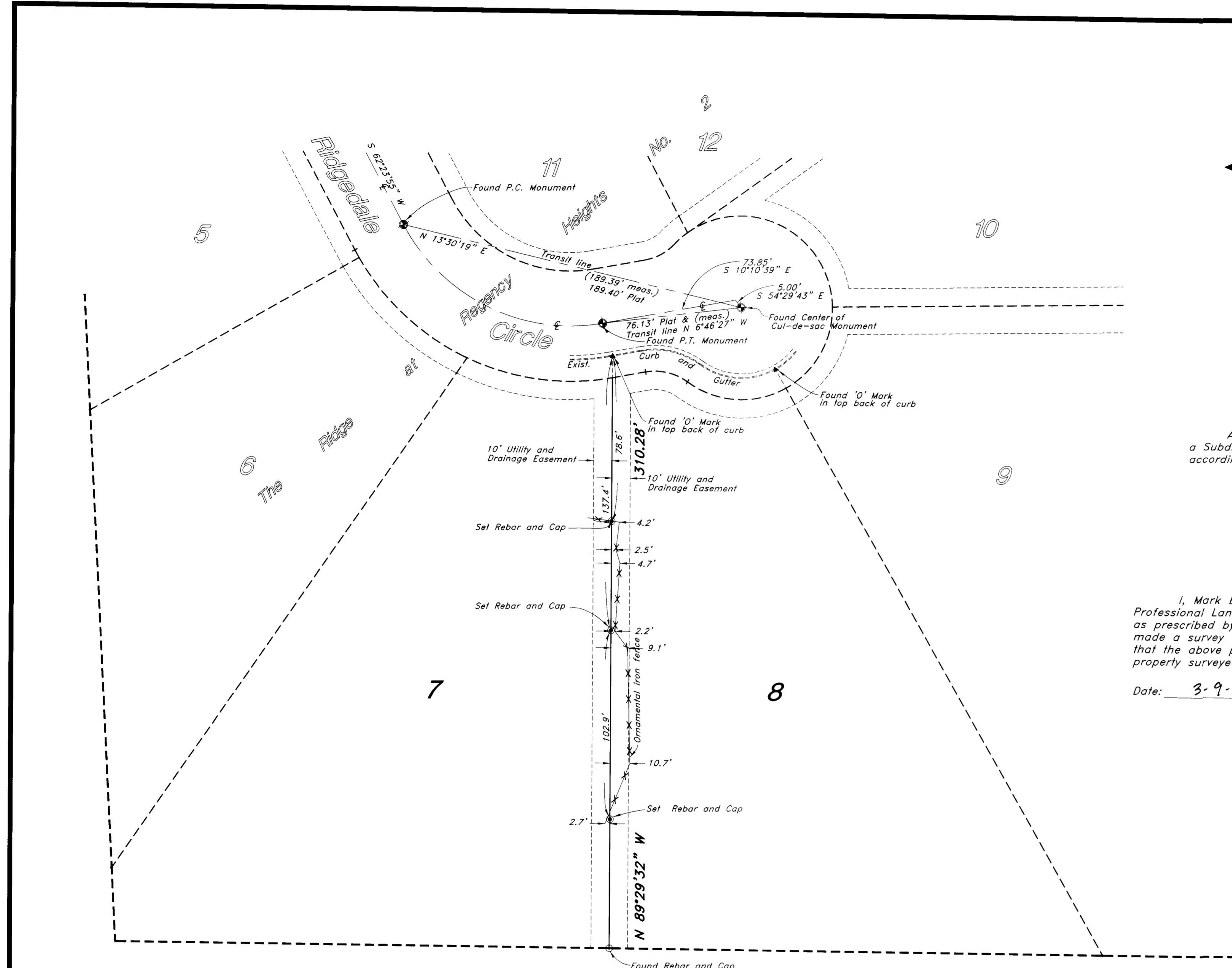
002207

PLAN HOLD CORPORATION • IRVINE, CALIFORNIA  
REORDER BY NUMBER 075AR

DRAWING NUMBER

002207

PLAN HOLD CORPORATION • IRVINE, CALIFORNIA  
REORDER BY NUMBER 075AR



Scale : 1" = 40'

LEGEND

- ⊕ Found Centerline Monument
- ⊙ Set Rebar and Cap
- Found Rebar and Cap
- - - - - Fence
- ▲ Found 'O' Mark Nail in top back of curb

DESCRIPTION

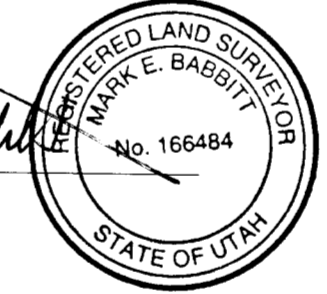
All of Lot 8, The Ridge at Regency Heights No. 2, a Subdivision in Ogden City, Weber County, Utah according to the official plat thereof:  
Contains 55,863 sq. ft.

CERTIFICATION

I, Mark E. Babbitt, do hereby certify that I am a Registered Professional Land Surveyor, and that I hold Certificate No. 166484, as prescribed by the Laws of the State of Utah, and I have made a survey of the above shown property. I further certify that the above plat correctly shows the true dimensions of the property surveyed.

Date: 3-9-99

*Mark E. Babbitt*  
Mark E. Babbitt



NARRATIVE

This property Survey was requested by Mr. Ernie Schreiner in order to reestablish his North property line. Lot corners were monumented as depicted on this drawing.

NOTE:  
All rebars set are 5/8"Ø and 24" long.

RECEIVED  
MAY 31 1999  
Ernie Schreiner

<h3>Property Survey</h3>		<b>Ernie Schreiner</b> Lot 8, The Ridge at Regency Heights No. 2 Ogden City, Weber County, Utah <small>A part of the Southwest 1/4 of Section 14, T5N, R1W, SLB&amp;M, U.S. Survey</small>	
<p><b>GREAT BASIN ENGINEERING NORTH</b> CONSULTING ENGINEERS and SURVEYORS 3544 Lincoln Avenue, Ogden, Utah, 84401 P.O. Box 9307, Ogden, Utah, 84409 <small>Ogden (801)394-4515 Salt Lake City (801)521-0222 Fax (801)392-7544</small></p>	SCALE : 1" = 40'	DATE : 9 Mar, 1999	DRWG. NO.  1
	DRAWN : MM	REVISIONS :	
SCHNEITE			

C:\a14\DWG5\Schneide.dwg Tue Mar 09 08:26:56 1999 MM

002207 002207

002207 002207