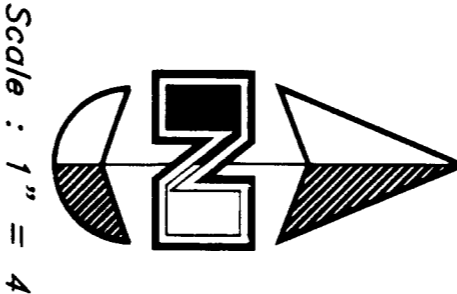
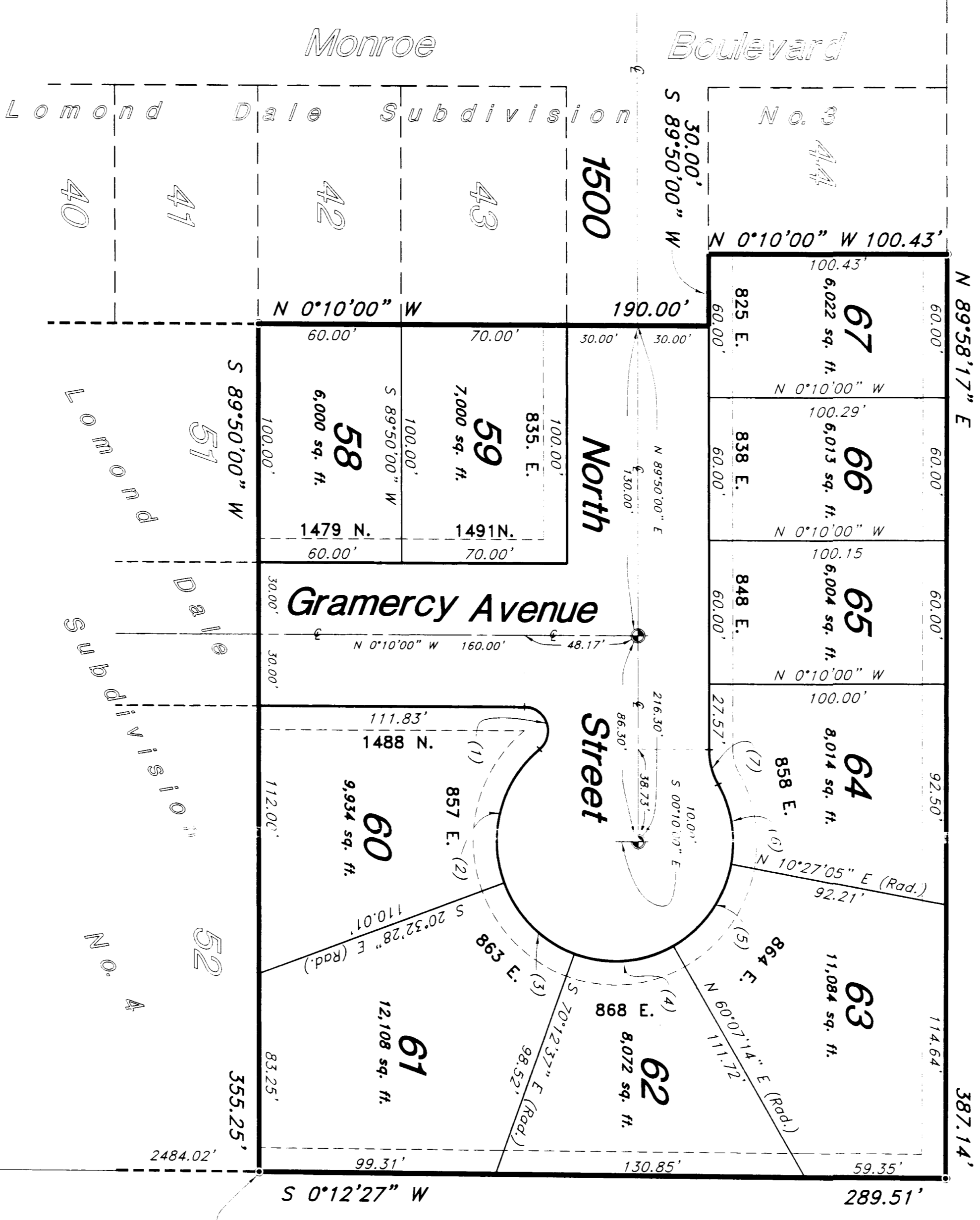


**Lomond Dale Subdivision No. 5**  
A part of Section 4, T6N, R1W, S18M, U.S. Survey  
Ogden City, Weber County, Utah



Scale : 1" = 40'

**SURVEYOR'S CERTIFICATE**  
I, Mark E. Babbitt, a Registered Professional Land Surveyor in the State of Utah, do hereby certify that this plat of Lomond Dale Subdivision No. 5 in Ogden City, Weber County, Utah, is a correct representation of the survey and that the same is in accordance with the laws and regulations of the State of Utah and that the same has been filed in the Weber County Recorder's Office and of a survey made on the ground.  
Signed this 6<sup>th</sup> day of January, 1999.  
Mark E. Babbitt  
License No. 166484  
Weber County Recorder

**OWNER'S DEDICATION**  
I, the undersigned, owner of the herein described part of land, hereby set apart and dedicate to some use and streets as shown on this plat, the following described easements, rights, and interests in and to the land and convey to Ogden City, Weber County, Utah, all those parts or portions of said land of land designated as streets, the same to be used as public thoroughfares forever, and also dedicate to Ogden City, Utah, those certain strips of easements for public utility and maintenance and operation of public utility service lines and drainage as may be authorized by Ogden City.  
Signed this 31<sup>st</sup> day of March, 1999.  
Aspen Homes Development Inc.  
Charles R. Dehuc Jr.  
Executive Vice-President

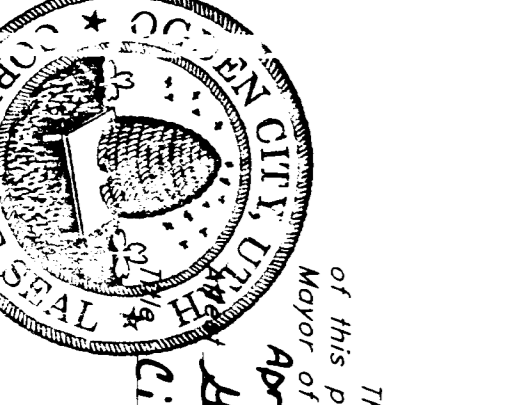
**ACKNOWLEDGMENT**  
On the 31<sup>st</sup> day of March, 1999, personally appeared before me, the undersigned Notary Public, the signer of the above Dedication, (1) in number, who duly acknowledged to me he signed it freely and voluntarily and for the purposes therein mentioned.  
Residing at Ogden, Utah  
Cindy S. Smith  
A Notary Public commissioned in Utah  
Commission Expires: 11/10/2001

**BOUNDARY DESCRIPTION**  
A part of Section 4, Township 6 North, Range 1 West, Salt Lake Base and Meridian, U.S. Survey, Beginning at the Northeast corner of Lot 52, Lomond Dale Subdivision No. 4, Ogden City, Weber County, Utah which is 2484.02 feet North 0°12'27" East along the East line extended and East line of said Lomond Dale Subdivision No. 4, 190.00 feet to the Southeast corner of said Lot 57, Lomond Dale Subdivision No. 4, then three (3) courses along the Eastern line of Lomond Dale Subdivision No. 4, thence three (3) courses along the Eastern line of Lomond Dale Subdivision No. 3, Ogden City, Weber County, Utah as follows: North 0°10'00" West 190.00 feet; South 89°50'00" West 30.00 feet and North 0°10'00" West 100.43 feet; thence North 89°58'17" East 387.14 feet to said East line extended; thence South 0°12'27" West 289.51 feet along said East line extended to the Point of Beginning.  
Contains 2.440 Acres

**CONSENT**  
The undersigned beneficiaries hereby consent to the recording of this plat for the herein described property and the dedications provided herein.  
Central Bank  
By: Mark Ogle  
Hans Development Company, Salt Lake Development Corp  
By: Craig Stephens P-22  
State of Utah  
County of Weber  
City of Ogden  
GREG W. HANS, who being by me duly sworn did say that he is the President of Hans Development Corp, Development Company, and that said instrument was signed on behalf of said corporation.  
On the 31<sup>st</sup> day of March, 1999, personally appeared before me, the undersigned Notary Public, Greg W. Hans, who being by me duly sworn did say that he is the President of Hans Development Corp, Development Company, and that said instrument was signed on behalf of Central Bank.  
On the 31<sup>st</sup> day of March, 1999, personally appeared before me, the undersigned Notary Public, Mark Ogle, who being by me duly sworn did say that he is the President of Central Bank and that said instrument was signed on behalf of Central Bank.  
By: Mark Ogle  
By: Craig Stephens P-22  
Central Bank  
Hans Development Corp  
Salt Lake Development Corp  
State of Utah  
County of Weber  
City of Ogden  
GREG W. HANS, who being by me duly sworn did say that he is the President of Hans Development Corp, Development Company, and that said instrument was signed on behalf of said corporation.  
On the 31<sup>st</sup> day of March, 1999, personally appeared before me, the undersigned Notary Public, Mark Ogle, who being by me duly sworn did say that he is the President of Central Bank and that said instrument was signed on behalf of Central Bank.  
By: Mark Ogle  
By: Craig Stephens P-22  
Central Bank  
Hans Development Corp  
Salt Lake Development Corp  
State of Utah  
County of Weber  
City of Ogden

**OGDEN CITY APPROVAL**  
This is to certify that this plat and dedication of the herein described property were approved and accepted by the Ogden City Council on the 14<sup>th</sup> day of April, 1999.  
Alvin G. Babbitt  
City Recorder  
Approved by the Ogden City Planning Commission on the 31<sup>st</sup> day of January, 1999.  
Cindy S. Smith  
Chair

**RECEIVED**  
JAN 21 1999  
WEBER COUNTY RECORDER  
DOUGLAS LEAFETS  
BY: Michelle Linnell  
RECORDED



**OGDEN CITY ENGINEER**  
I hereby certify that I have carefully investigated the lines of survey of the foregoing plat and legal descriptions and find them to be correct and to agree with the monuments on record in this office.  
Signed this 31<sup>st</sup> day of March, 1999.  
Glen Hudson  
Signature

**OGDEN CITY DIRECTOR**  
I hereby certify that the requirements of all applicable ordinances and provisions of the zoning ordinance are met in accordance with the foregoing plat and dedication have been complied with.  
Signed this 31<sup>st</sup> day of March, 1999.  
Glen Hudson  
Signature

**GREAT BASIN ENGINEERING NORTH**  
CONSULTING ENGINEERS AND SURVEYORS  
344 Lincoln Avenue, Ogden, Utah, 84401  
Phone 469-3453 Fax 469-3455  
GREAT BASIN ENGINEERING NORTH

**NARRATIVE**  
This plat and survey was requested by Mr. Charles R. Dehuc Jr. of Aspen Homes Development Corp. and is a part of the Lomond Dale Subdivision No. 5, Ogden City, Weber County, Utah. It is a part of the Lomond Dale Subdivision No. 4, T6N, R1W, S18M, U.S. Survey. A line bearing N 89°58'17" E between the two monuments was used as the basis of bearings. Lot corners were monumented as depicted on this drawing.

**NOTE:**  
10 Utility and Drainage Easements each side of property line as indicated by dashed lines, except as otherwise shown.

**OGDEN CITY PLANNING COMMISSION**  
Approved by the Ogden City Planning Commission on the 31<sup>st</sup> day of January, 1999.  
Cindy S. Smith  
Chair

**RECEIVED**  
JAN 21 1999  
WEBER COUNTY RECORDER  
DOUGLAS LEAFETS  
BY: Michelle Linnell  
RECORDED