

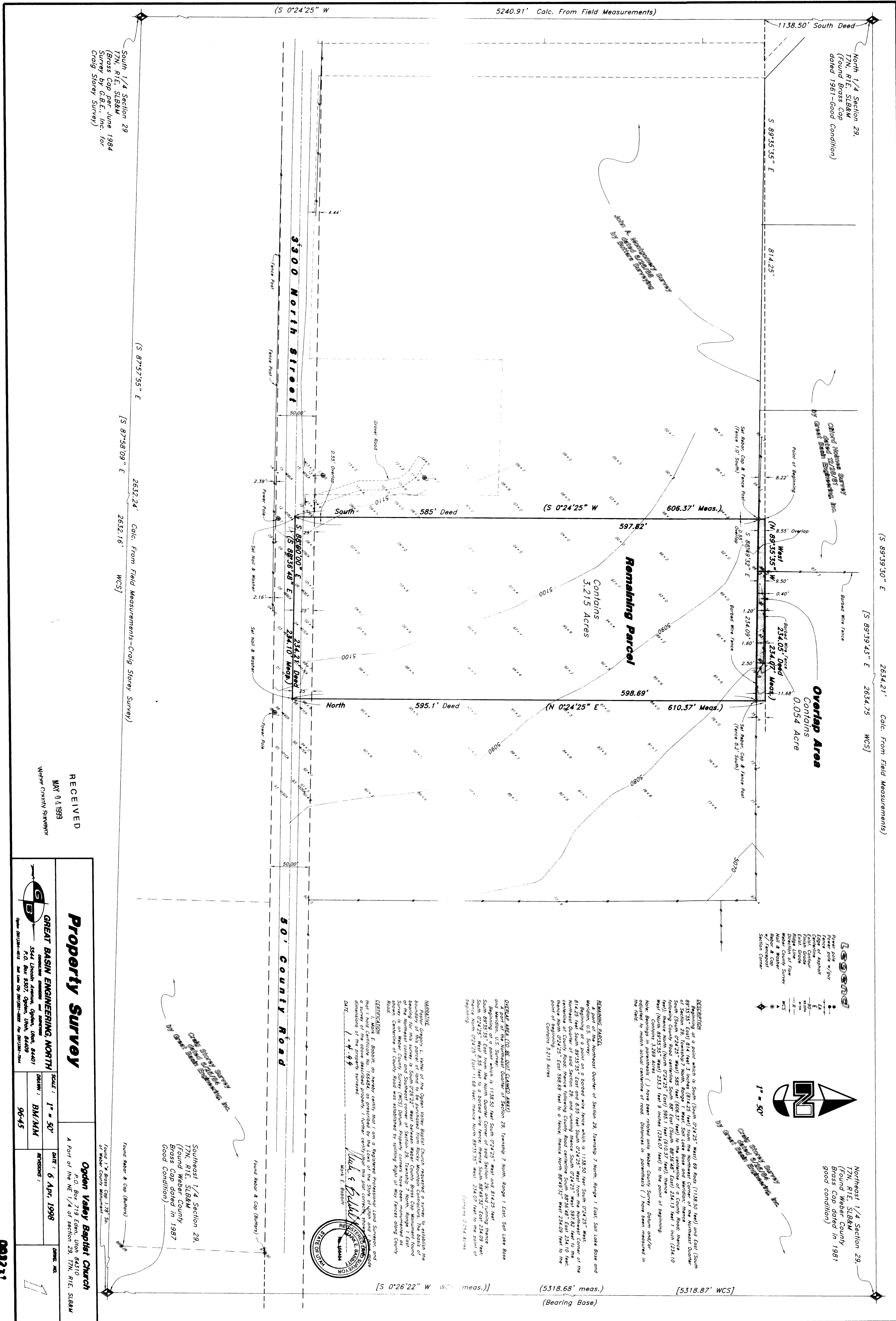
PLAN HOLD CORPORATION • IRVINE, CALIFORNIA
REORDER BY NUMBER 0734R
POSITION LINE IS PART OF THE LINE

PLAN HOLD CORPORATION • IRVINE, CALIFORNIA
REORDER BY NUMBER 0734R
POSITION LINE IS PART OF THE LINE

PLAN HOLD CORPORATION • IRVINE, CALIFORNIA
REORDER BY NUMBER 0734R
POSITION LINE IS PART OF THE LINE

PLAN HOLD CORPORATION • IRVINE, CALIFORNIA
REORDER BY NUMBER 0734R
POSITION LINE IS PART OF THE LINE

C:\s1\p\002231-45.dwg Mon Jan 04 16:36:50 1999 1M



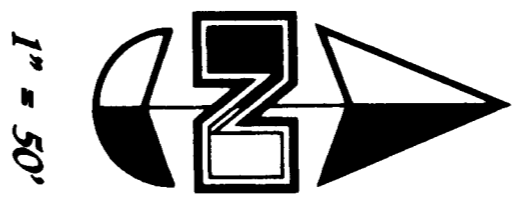
South 1/4 Section 29
T7N, R1E, SLB&M
(Brass Cap per June 1984
Survey by G.B.E., Inc. for
Craig Storey Survey)

North 1/4 Section 29
T7N, R1E, SLB&M
(Round Brass Cap
dated 1981-08-08
Condition)

Remaining Parcel
Contains
3.215 Acres

Overlap Area
Contains
0.054 Acre

- LEGEND**
- Point of Beginning
 - Point of Beginning w/ Guy
 - Corner
 - Corner of Acreage
 - Corner of Section
 - Corner of Township
 - Corner of Range
 - Corner of County
 - Corner of State
 - Corner of Federal
 - Corner of Survey
 - Corner of Property
 - Corner of Easement
 - Corner of Right-of-Way
 - Corner of Road
 - Corner of Bridge
 - Corner of Canal
 - Corner of Well
 - Corner of Pole
 - Corner of Stake
 - Corner of Nail
 - Corner of Pipe
 - Corner of Wire
 - Corner of Flag
 - Corner of Marker
 - Corner of Monument
 - Corner of Obsolete
 - Corner of Invalid
 - Corner of Void
 - Corner of Unlawful
 - Corner of Illegal
 - Corner of Illegitimate
 - Corner of Invalid
 - Corner of Unlawful
 - Corner of Illegal
 - Corner of Illegitimate



Northwest 1/4 Section 29
T7N, R1E, SLB&M
(Round Brass Cap dated in 1981
good condition)

002231

RECEIVED
MAY 04 1999
WEBER COUNTY SURVEYOR

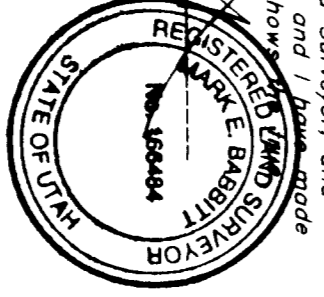
Property Survey

GREAT BASIN ENGINEERING, NORTH
3544 Lincoln Avenue, Ogden, Utah 84401
Phone: (801) 231-4141 Fax: (801) 231-4142

SCALE: 1" = 30'	DATE: 6 Apr, 1998
DRAWN: BM/MM	REVISIONS:
96-45	

Ogden Valley Baptist Church
P.O. Box 719 Eden, Utah 84410
A Part of the NE 1/4 of Section 29, T7N, R1E, SLB&M
of Weber County, Utah

NOTICE
I, the undersigned, do hereby certify that I am a Registered Professional Land Surveyor, and that I hold Certificate No. 16444, as prescribed by the laws of the State of Utah, and that the dimensions of the property surveyed are correct, and that I am duly sworn to perform my duties as a Surveyor. I have not been suspended or annulled from the practice of my profession. My Commission expires on 1-1-99.
Mark E. Beeson
Surveyor



DEED AREA (TO BE SPLIT) (CALCULATED AREA)
A portion of the Southwest Quarter of Section 29, Township 7 North, Range 1 East, Salt Lake Base and Meridian, U.S. Survey, containing 3.215 acres, more or less, is hereby divided into two parcels. Beginning at a point which is 1138.50 feet South 07°24'25" West and 814.25 feet East from the Northwest Corner of the Northwest Quarter of said Section 29, and running thence South 07°24'25" West 814.25 feet to the centerline of 50' wide County Road (WCS) 200m, Property corners have been monumented as shown. Commence of County Road was established by splitting right of way fences along County Road.
Contains 3.215 Acres

REMAINING PARCEL
Northwest Quarter of section 29, Township 7 North, Range 1 East, Salt Lake Base and Meridian, U.S. Survey, containing 3.215 acres, more or less, is hereby divided into two parcels. Beginning at a point which is 1138.50 feet South 07°24'25" West and 814.25 feet East from the Northwest Corner of the Northwest Quarter of said Section 29, and running thence South 07°24'25" West 814.25 feet to the centerline of 50' wide County Road (WCS) 200m, Property corners have been monumented as shown. Commence of County Road was established by splitting right of way fences along County Road.
Contains 3.215 Acres

DESCRIPTION
Beginning at a point which is South (South 07°24'25" West) 89 feet (1138.50 feet) and East (East 07°24'25" East) 814 feet 2.5 inches (814.25 feet) from the Northwest Corner of the Northwest Quarter of said Section 29, and running thence South 07°24'25" West 814.25 feet to the centerline of 50' wide County Road (WCS) 200m, Property corners have been monumented as shown. Commence of County Road was established by splitting right of way fences along County Road.
Contains 3.215 Acres

DESCRIPTION
Beginning at a point which is South (South 07°24'25" West) 89 feet (1138.50 feet) and East (East 07°24'25" East) 814 feet 2.5 inches (814.25 feet) from the Northwest Corner of the Northwest Quarter of said Section 29, and running thence South 07°24'25" West 814.25 feet to the centerline of 50' wide County Road (WCS) 200m, Property corners have been monumented as shown. Commence of County Road was established by splitting right of way fences along County Road.
Contains 3.215 Acres

[S 0°26'22" W WCS (meas.)] (5318.68' meas.) [5318.87' WCS] (Bearing Base)