

DRAWING NUMBER

002251

PLAN HOLD CORPORATION • IRVINE, CALIFORNIA  
REORDER BY NUMBER 07546

DRAWING NUMBER

002251

PLAN HOLD CORPORATION • IRVINE, CALIFORNIA  
REORDER BY NUMBER 07546

DRAWING NUMBER

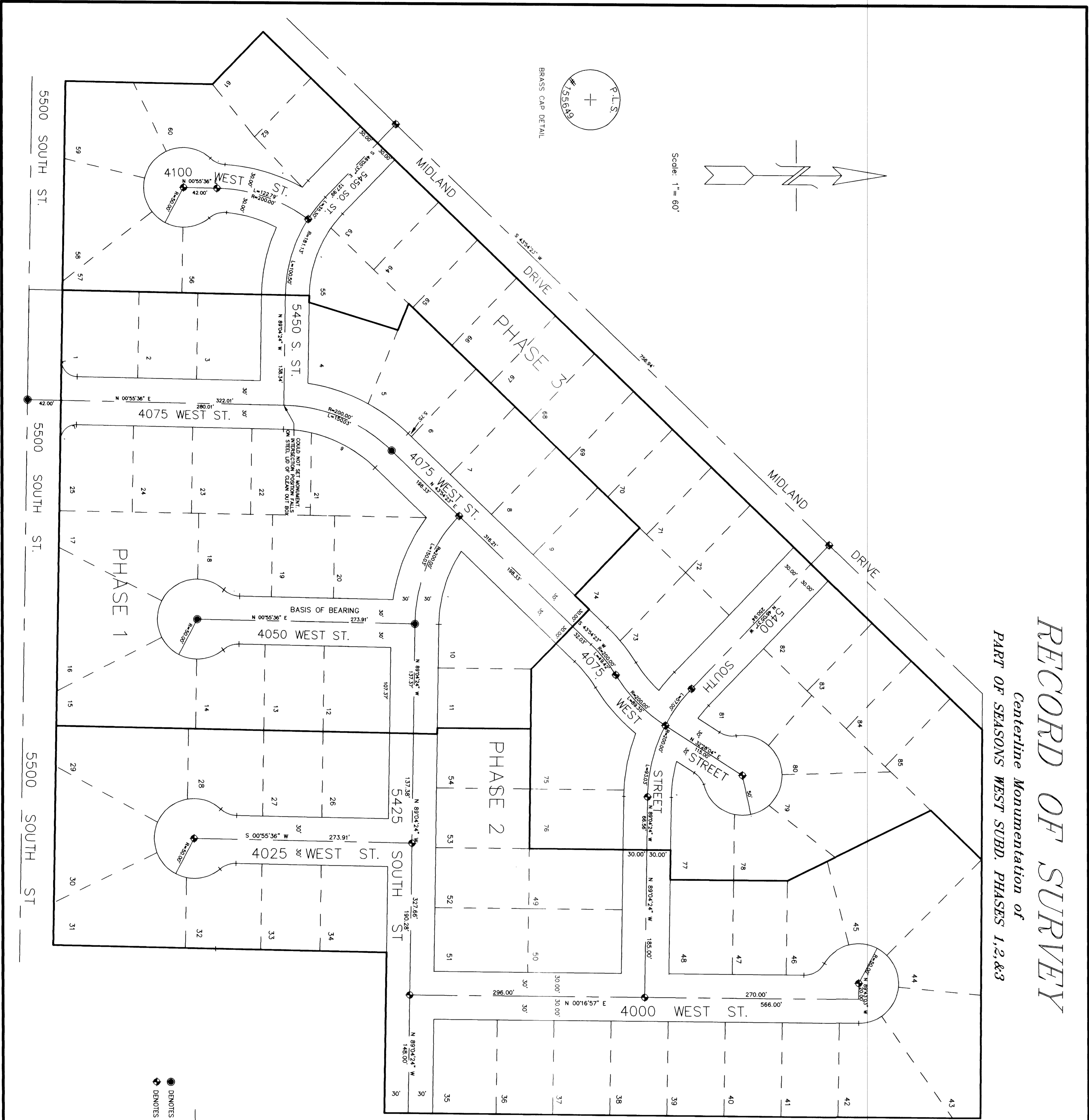
002251

PLAN HOLD CORPORATION • IRVINE, CALIFORNIA  
REORDER BY NUMBER 07546

DRAWING NUMBER

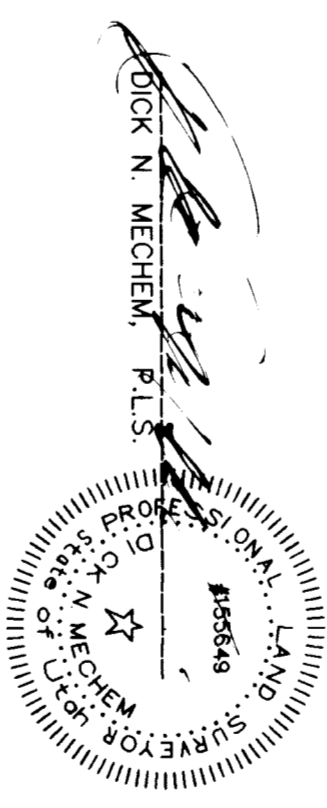
002251

PLAN HOLD CORPORATION • IRVINE, CALIFORNIA  
REORDER BY NUMBER 07546



**RECORD OF SURVEY**  
*Centerline Monumentation of*  
**PART OF SEASONS WEST SUBD. PHASES 1,2&3**

**LEGEND**  
 ● DENOTES A FOUND BRASS MONUMENT  
 ⊕ DENOTES A SET BRASS MONUMENT



DATE 6/13/99

**SURVEYORS CERTIFICATE**

I, Dick N. Mechem, do hereby certify that I am a licensed land surveyor of the State of Utah and that I have personally supervised the survey shown hereon and that all monuments shown hereon are of the character and occupy the positions indicated and are sufficient to enable the survey to be retraced.

**NARRATIVE AND STATEMENT OF PURPOSE**  
 THE PURPOSE OF THIS SURVEY WAS TO LOCATE CENTERLINE POINTS FOR MONUMENTATION OF PHASES 1, 2, AND 3 OF SEASONS WEST SUBDIVISION. MONUMENTS SET BY CIVIL ENGINEERING, WERE USED AS CONTROL, AND AS THE BASIS OF BEARING. CONTROL OUTSIDE OF THE SUBDIVISION WAS NOT USED AS THE PHASSES ARE TIED TO A NONEXISTENT STATEMENT COMMENT.

**RECORD OF SURVEY**  
 for  
**G.W. ENGINEERING**  
 Located in The Southwest One-Quarter of Section 16,  
 Township 5 North, Range 2 West, S1E84M  
 Weber County Survey Co.  
 RECEIVED  
 JUN 11 1999

002251

002251