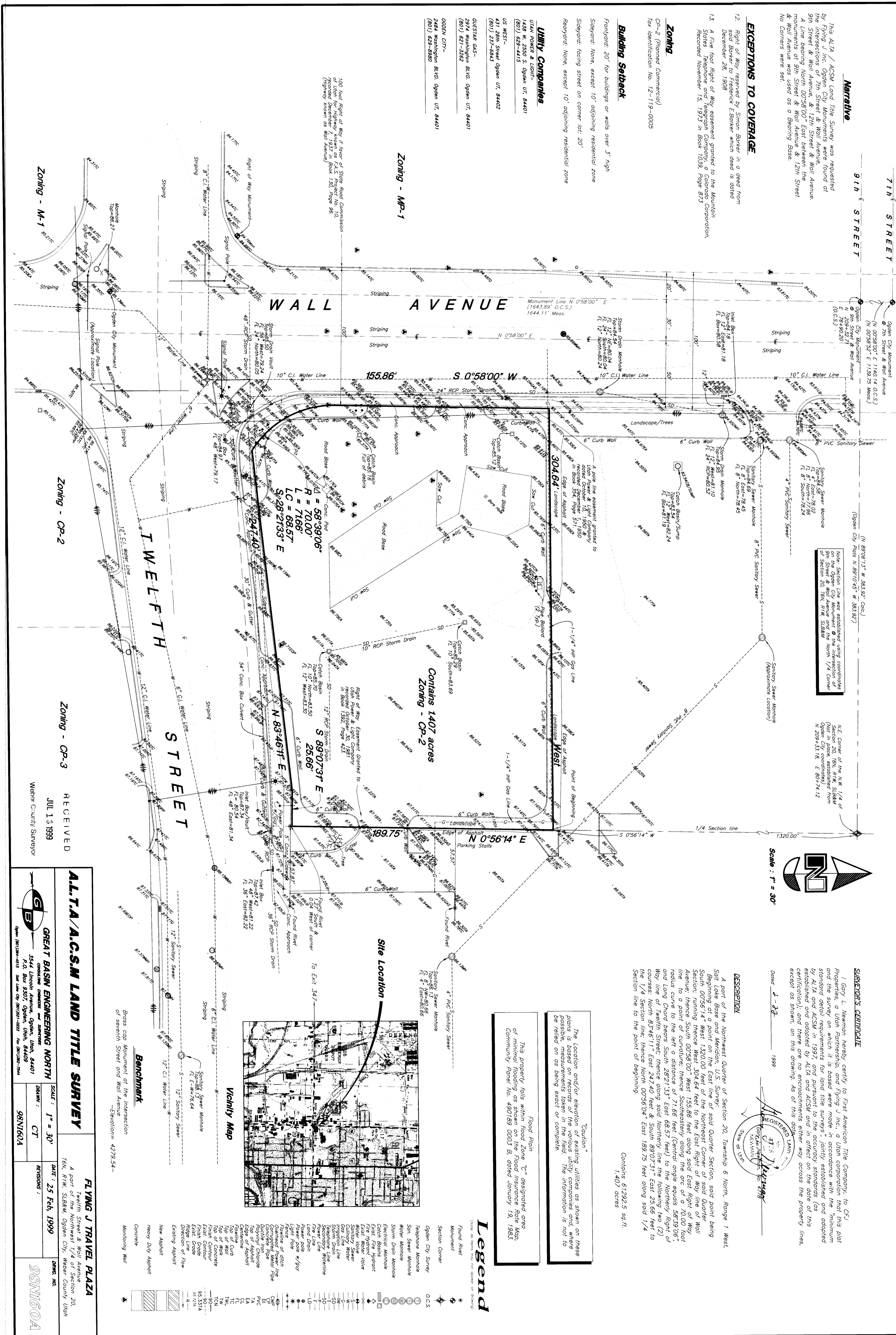


C:\CAD\PL\98N160\98N160A.DWG Thu Jul 08 10:02:35 1999 GM



DRAWING NUMBER
002277
PLAN HOLD CORPORATION • IRVINE, CALIFORNIA
REORDER BY NUMBER 07549

DRAWING NUMBER
002277
PLAN HOLD CORPORATION • IRVINE, CALIFORNIA
REORDER BY NUMBER 07549

DRAWING NUMBER
002277
PLAN HOLD CORPORATION • IRVINE, CALIFORNIA
REORDER BY NUMBER 07549

DRAWING NUMBER
002277
PLAN HOLD CORPORATION • IRVINE, CALIFORNIA
REORDER BY NUMBER 07549

ALTA/A.C.S.M. LAND TITLE SURVEY

GREAT BASIN ENGINEERING NORTH
3544 Lincoln Avenue, Open, Utah, 84401
R.D. Box 3807, Open, Utah, 84401
Phone: 801-324-4113 Fax: 801-324-4114

FLYING J TRAVEL PLAZA
A part of the Northwest 1/4 of Section 20,
T8N, R1W, S88M, Open City, Weber County, Utah

SCALE: 1" = 30'
DATE: 25 Feb. 1999
DRAWN BY: CT
CHECKED BY: [Signature]
REVISIONS:

98N160A

RECEIVED
JUL 13 1999
WEBER COUNTY SURVEYOR

002277

002277

002277