

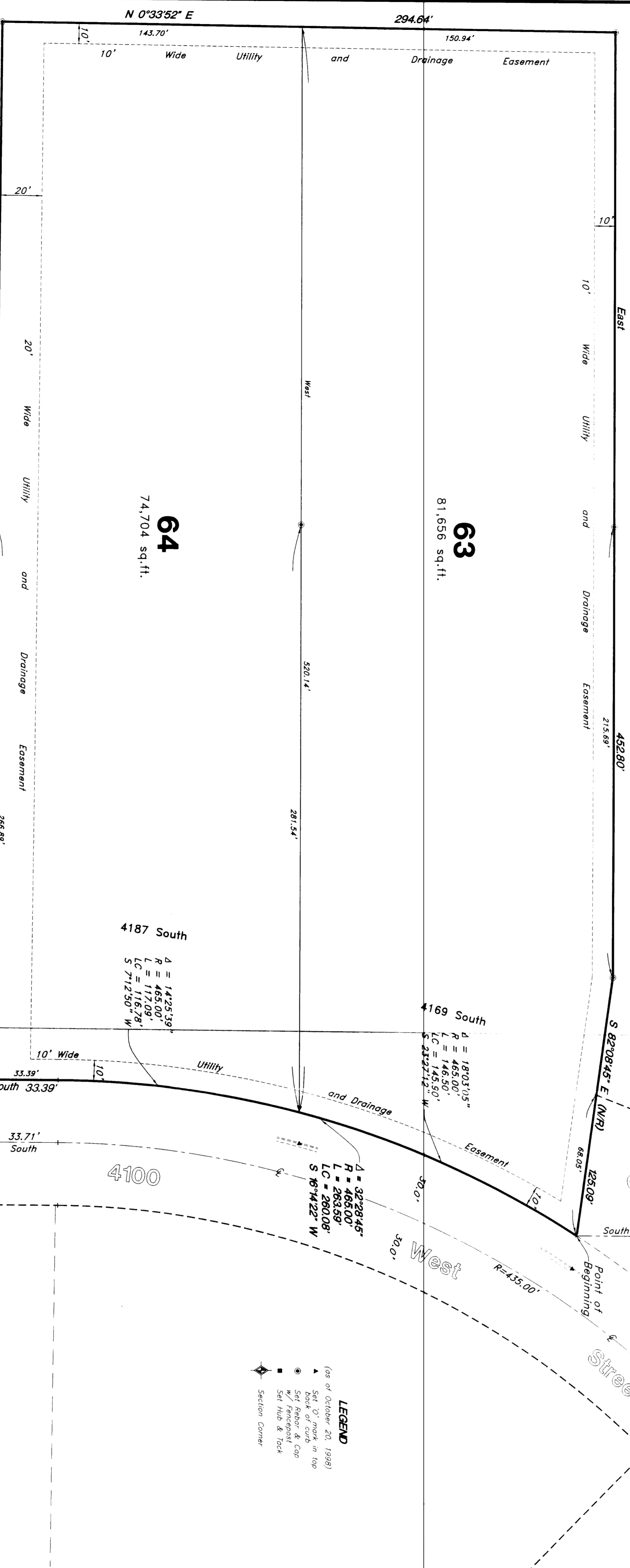
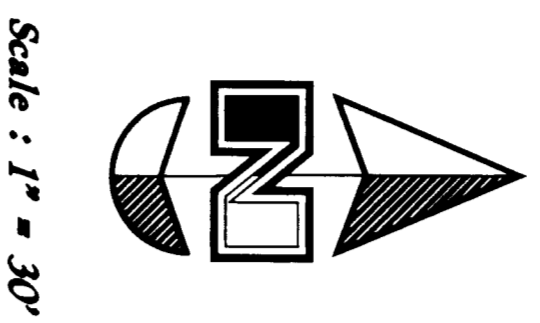
48-89

002292

Amended Plat of Lots 63 and 64

ROCKY MOUNTAIN MEADOWS SUBDIVISION PHASE FOUR

A part of the Northwest 1/4 Section 9, T5N, R2W, SLB8M, U.S. Survey
West Haven City, Weber County, Utah



Northwest corner of Section 9, T5N, R2W, SLB8M, U.S. Survey (Found Brass cap Monument)
 North 1/4 corner of Section 9, T5N, R2W, SLB8M, U.S. Survey (Found Brass cap Monument)
 North 1/4 corner of Section 9, T5N, R2W, SLB8M, U.S. Survey (Found Brass cap Monument)
 Point of Beginning
 Section line
 4000 South Street
 2811.42' W.C.S. (2811.35' meas.)
 1277.56'
 1045.57'
 452.80'
 218.89'
 42.00'
 81.656 sq. ft.
 74,704 sq. ft.
 4169 South Street
 4169 South
 $\Delta = 18703.115^\circ$
 $R = 485.00'$
 $LC = 145.90'$
 $S = 2129.753' W$

LEGEND
 (as of October 26, 1998)
 • Stake of iron in the ground
 • Set fence & cap
 • Set hub & box
 ◈ Section Corner

SURVEYOR'S CERTIFICATE

I, Mark E. Babble, a Registered Professional Land Surveyor in the State of Utah, do hereby certify that this Amended Plat of Lots 63 and 64 Rocky Mountain Meadows Subdivision Phase Four in Weber County, Utah has been made in accordance with the laws of Utah, that the surveying was done in accordance with the following description of lots included in said subdivision, as copied from records in the Weber County Recorder's Office, and of a survey made on the ground.

Signed this 13th day of January, 1999
 License No. 166484
 Mark E. Babble
 REGISTERED PROFESSIONAL LAND SURVEYOR

OWNER'S DEDICATION

I, the undersigned owner of the herein described tract of land, do hereby set apart and dedicate, grant and convey to West Haven, Utah all those parts or portions of said tract of land designed as streets to be used as public thoroughfares forever, and dedicated on the plat as public utility, storm water, detention ponds, drainage and canal maintenance easements, the same to be used for the installation, maintenance and operation of sewer, drainage facilities, irrigation canals or for the eventual preservation of water through the use of such facilities, and that the same may be authorized by West Haven, Utah, with no buildings or structures being erected within such easements.

Signed this 13th day of January, 1999
 KOR, LLC, A Utah Limited Liability Company
 Kevin V. Glosmann, Manager

ACKNOWLEDGMENT

Sole of Utah, } ss
 County of Weber, }
 Kevin V. Glosmann, who being duly sworn, did say that he is Manager of KOR, LLC, a Utah Limited Liability Company and that said instrument was signed in behalf of said Limited Liability Company by a resolution of the Board of Directors and Kevin V. Glosmann, its authorized signatory, in the presence of
 Residing at: *Kevin V. Glosmann*
Kevin V. Glosmann
 A Notary Public commissioned in Utah
 Commission Expires: 8-1-02
Patrick S. Kessel
 Notary



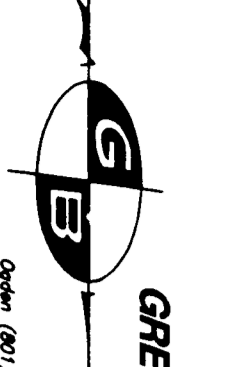
BOUNDARY DESCRIPTION

All of Lots 63 and 64, Rocky Mountain Meadows Subdivision Phase Four, West Haven City, Weber County, Utah according to the official plat hereof and a part of the Northwest quarter of Section 9, Township 5 North, Range 2 West, Soil Lake Base and Meridian, U.S. Survey, more particularly described as follows:
 Beginning at the Northeast corner of Lot 63, Rocky Mountain Meadows Subdivision Phase Four, West Haven City, Weber County, Utah, which is 1277.56 feet North 89°19'15" West along the Section line and 1045.57 feet South from the North 1/4 corner of said Section 9; or follows Southwesterly, along the arc of a 465.00 foot radius curve to the left a distance of 263.59 feet (Long Chord bears South 18°14'22" West 280.08 feet) and South 33.39 feet to the Southeast corner of Lot 64 of said Rocky Mountain Meadows Subdivision Phase Four; thence South 2°23'13" East 452.80 feet along said Section line and South line extended of Lot 64; thence East 452.80 feet along said North line extended and North line of said Lot 63; thence South 87°08'45" East 125.09 feet along said North line of Lot 63 to the point of beginning.

Contains 5.590 Acres
 RECEIVED
 JUL 27 1999
 Weber County Survey.

NOTE:
 10' Utility and Drainage Easements each side of property indicated by dashed lines, except as otherwise shown.

NARRATIVE
 This Amended Subdivision Plat was requested by Mr. Kevin Glosmann for the purpose of creating larger residential lots. Bearings are based upon the previously recorded Great Salt Flats No. 5 and Rocky Mountain Meadows Subdivision Phase Four (M.C.S. datum).



GREAT BASIN ENGINEERING NORTH
 1544 Lincoln Avenue, Ogden, Utah, 84403
 P.O. Box 8207, Ogden, Utah, 84409
 801-633-4215 Fax 801-633-0232 Te 801-633-2344

WEST HAVEN CITY SURVEYOR
 I hereby certify that I have investigated the lines of survey, of the foregoing plat and the legal description thereof and to agree with the lines and monuments on record in this office.

Signed this 13th day of January, 1999
[Signature]
 Surveyor

WEST HAVEN CITY ENGINEER
 I hereby certify that the required public improvement standards and drawings for this subdivision financial guarantee is sufficient for the installation of these improvements.

Signed this 13th day of January, 1999
[Signature]
 Engineer

WEST HAVEN CITY ATTORNEY
 I have examined the financial guarantee and other documents associated with this subdivision plat and find that they conform to the provisions of Utah law and ordinances applicable thereto and now in force and effect.

Signed this 14th day of January, 1999
[Signature]
 Attorney

CITY COUNCIL ACCEPTANCE
 This is to certify that this subdivision plat, the financial guarantee of public improvements thereon are hereby accepted by the City Council of West Haven, Utah on the 13th day of January, 1999.

[Signature]
 Mayor, West Haven, Utah

WEST HAVEN CITY PLANNING COMMISSION APPROVAL
 This is to certify that this subdivision plat was duly approved by the City Planning Commission on the 13th day of January, 1999.

[Signature]
 Chair, West Haven, Utah Planning Commission

WEBER COUNTY RECORDER

RECORDER
 FEE PAID
 \$52.00
 FILED FOR RECORD AND RETURNED TO OFFICE OF RECORDS
 JUL 27 1999
 BY: *[Signature]*
 DEPUTY