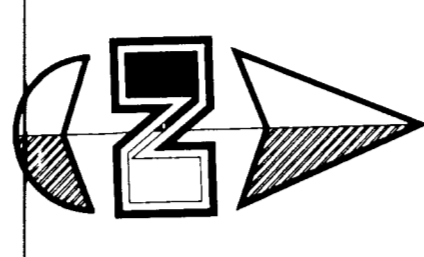
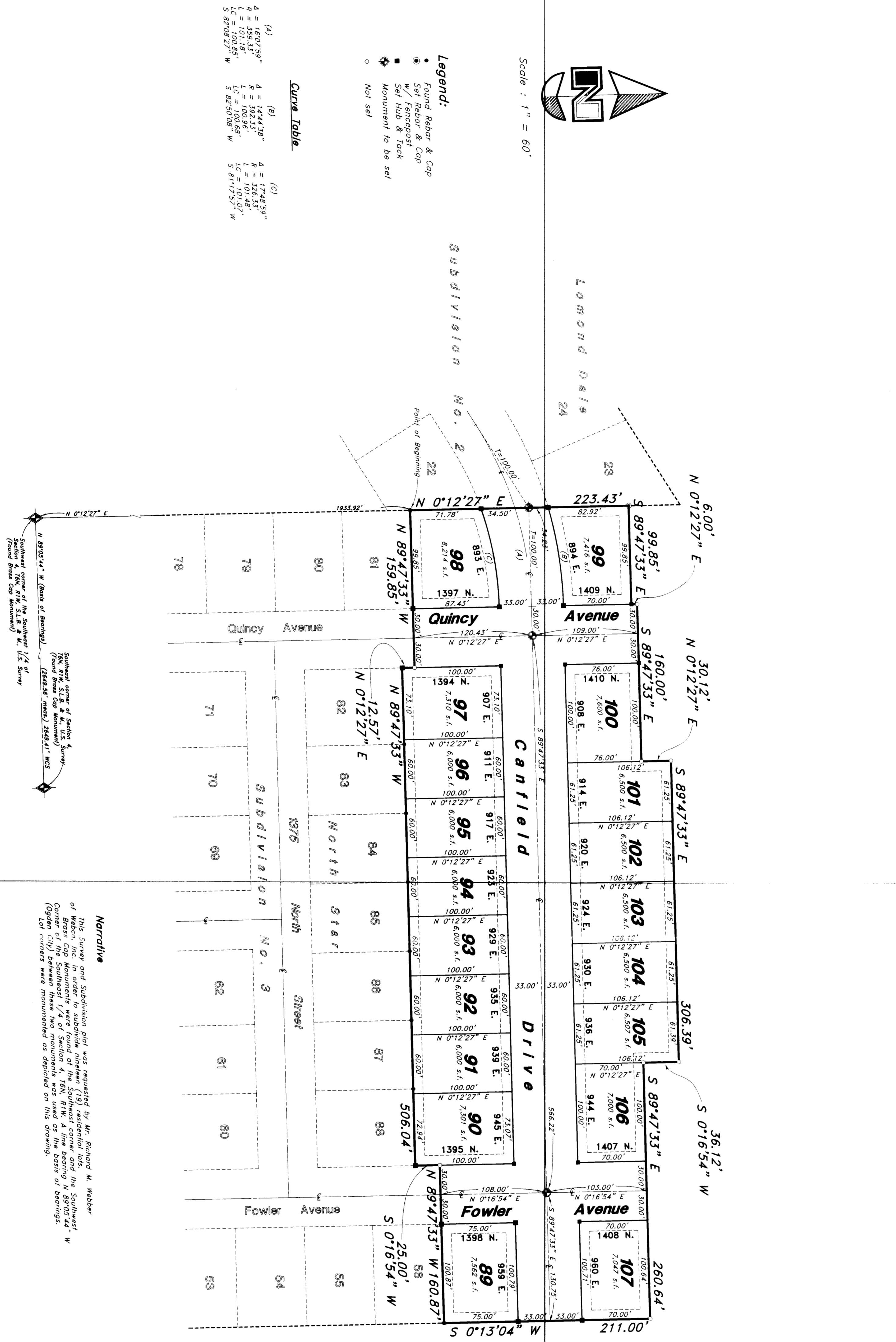


51-61

North Star Subdivision No. 4
A part of the Southeast Quarter of Section 4, T6N, R1W, SLB. & M., U.S. Survey
Ogden City, Weber County, Utah



Scale: 1" = 60'

- Legend:**
- Sound Paper & Cap
 - w/ Fencepost
 - w/ Hub & Tick
 - Monument to be set
 - Not set

Curve Table

(A)	(B)	(C)
4 = 180°39'	4 = 144°29'	4 = 174°43'
R = 100.00'	R = 100.00'	R = 100.00'
L = 100.00'	L = 100.00'	L = 100.00'
LC = 100.00'	LC = 100.00'	LC = 100.00'
S = 20°05'37" W	S = 20°05'37" W	S = 20°05'37" W

NOTE:
10' Utility and Range Easements each side of road as defined by dashed lines, except as otherwise shown.

Public Works Director
I hereby certify that I have carefully investigated the lines of Survey of the foregoing plat and find the same to be correct and to agree with the lines and monuments on record in this office.
Signed this 28th day of March, 1998

Ogden City Engineer
I hereby certify that I have carefully investigated the lines of Survey of the foregoing plat and find the same to be correct and to agree with the lines and monuments on record in this office.
Signed this 28th day of March, 1998

Ogden City Planning Commission
This is to certify that this plat and dedication of this plat were duly approved and accepted on the 3rd day of March, 1998.
Attest: *Shirley J. Carter*
City Recorder

Ogden City Approval
I hereby certify that I have carefully investigated the lines of Survey of the foregoing plat and find the same to be correct and to agree with the lines and monuments on record in this office.
Signed this 28th day of March, 1998

Boundary Description
A part of the Southeast Quarter of Section 4, Township 6 North, Range 1 West, Salt Lake Meridian of the Northwest Corner of Lot 81, North Star Subdivision No. 3, Ogden City, Weber County, Utah, which is 1933.92 feet North and West from the extension of the West line of North Star Subdivision No. 1, 0°12'27" East. East 223.43 feet, bearing 0°12'27" East; thence South 89°47'33" East 99.65 feet; thence North 0°12'27" East 6.00 feet; thence South 89°47'33" East 180.00 feet; thence South 0°16'54" West 36.12 feet; thence South 89°47'33" East 306.53 feet; thence North 0°12'27" East 211.00 feet to the intersection of the Northern line of said North Star Subdivision No. 3; thence North 89°47'33" West 506.04 feet; thence South 0°12'27" East 12.97 feet and North 89°47'33" West 159.85 feet to the point of beginning.
Contains 4.617 Acres

Received
JUL 27 1998
Weber County Survey

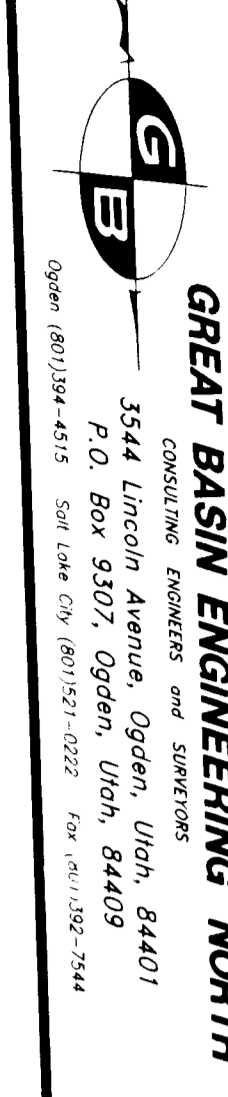
SURVEYOR'S CERTIFICATE
002293
I, Mark E. Robbin, a Registered Professional Land Surveyor in the State of Utah, do hereby certify that this plat of North Star Subdivision No. 4 and hereby dedicate, grant and convey to Ogden City, Weber County, Utah, all those poles, monuments, fences, and other things shown on the following described lands included in said subdivision carried on data compiled from records in the Weber County Recorder's Office and of a survey made on the ground.
Signed this 28th day of December, 1998.
Mark E. Robbin
License No. 166484

OWNER'S DEDICATION
I, the undersigned, owner of the herein described tract of land, hereby set apart and dedicate, grant and convey to Ogden City, Weber County, Utah, all those poles, monuments, fences, and other things shown on the following described lands included in said subdivision carried on data compiled from records in the Weber County Recorder's Office and of a survey made on the ground.
Signed this 28th day of December, 1998.
Silver Creek Development LLC
Richard W. Weber
Owner

ACKNOWLEDGMENT
On the 28th day of December, 1998, personally appeared before me, a Notary Public, the signers of the above owner's dedication and in my presence they acknowledged to me the signed, true and voluntarily and for the purposes therein mentioned.
Richard W. Weber
Notary Public, commissioned in Utah
Residing at: Ogden, UT
Commission Expires: 12/31/00

BOUNDARY DESCRIPTION
A part of the Southeast Quarter of Section 4, Township 6 North, Range 1 West, Salt Lake Meridian of the Northwest Corner of Lot 81, North Star Subdivision No. 3, Ogden City, Weber County, Utah, which is 1933.92 feet North and West from the extension of the West line of North Star Subdivision No. 1, 0°12'27" East. East 223.43 feet, bearing 0°12'27" East; thence South 89°47'33" East 99.65 feet; thence North 0°12'27" East 6.00 feet; thence South 89°47'33" East 180.00 feet; thence South 0°16'54" West 36.12 feet; thence South 89°47'33" East 306.53 feet; thence North 0°12'27" East 211.00 feet to the intersection of the Northern line of said North Star Subdivision No. 3; thence North 89°47'33" West 506.04 feet; thence South 0°12'27" East 12.97 feet and North 89°47'33" West 159.85 feet to the point of beginning.
Contains 4.617 Acres

WEBER COUNTY RECORDER
RECEIVED
JUL 27 1998
Weber County Survey



GREAT BASIN ENGINEERING NORTH
3524 Lincoln Avenue, Ogden, Utah, 84401
P.O. Box 9307, Ogden, Utah, 84409
Ogden (801) 334-4433 Salt Lake City (801) 221-0022 Fax (801) 334-7342

Ogden City
PUBLIC WORKS DIRECTOR
I hereby certify that I have carefully investigated the lines of Survey of the foregoing plat and find the same to be correct and to agree with the lines and monuments on record in this office.
Signed this 28th day of March, 1998

Ogden City Engineer
I hereby certify that I have carefully investigated the lines of Survey of the foregoing plat and find the same to be correct and to agree with the lines and monuments on record in this office.
Signed this 28th day of March, 1998

Ogden City Planning Commission
This is to certify that this plat and dedication of this plat were duly approved and accepted on the 3rd day of March, 1998.
Attest: *Shirley J. Carter*
City Recorder

Ogden City Approval
I hereby certify that I have carefully investigated the lines of Survey of the foregoing plat and find the same to be correct and to agree with the lines and monuments on record in this office.
Signed this 28th day of March, 1998

Received
JUL 27 1998
Weber County Survey