

DRAWING NUMBER

002294

PLAN HOLD CORPORATION • IRVINE, CALIFORNIA
RECORDER BY NUMBER 075AR

DRAWING NUMBER

002294

PLAN HOLD CORPORATION • IRVINE, CALIFORNIA
RECORDER BY NUMBER 075AR

DRAWING NUMBER

002294

PLAN HOLD CORPORATION • IRVINE, CALIFORNIA
RECORDER BY NUMBER 075AR

DRAWING NUMBER

002294

PLAN HOLD CORPORATION • IRVINE, CALIFORNIA
RECORDER BY NUMBER 075AR



Scale : 1" = 20'

RECEIVED

JUL 27 1999

REGISTERED PROFESSIONAL SURVEYOR

NARRATIVE

This survey was requested by Mrs. Lana K. Wilson in order to establish the property corners along her East side of Lot 12. A Nail and Washer was found at the center of the Cul-de-sac on 450 East Street, and a railroad spike at the Intersection of 2050 North Street and 450 East Street. A line bearing North 24°10' West between these two monuments was used as the Basis of Bearings. Lot corners were monumented as depicted on this drawing.

BOUNDARY DESCRIPTION

All of Lot 12, Jillville Subdivision No. 1, North Ogden City, Weber County, Utah, according to the official plat thereof, on file and of record in the Weber County Recorder's office.

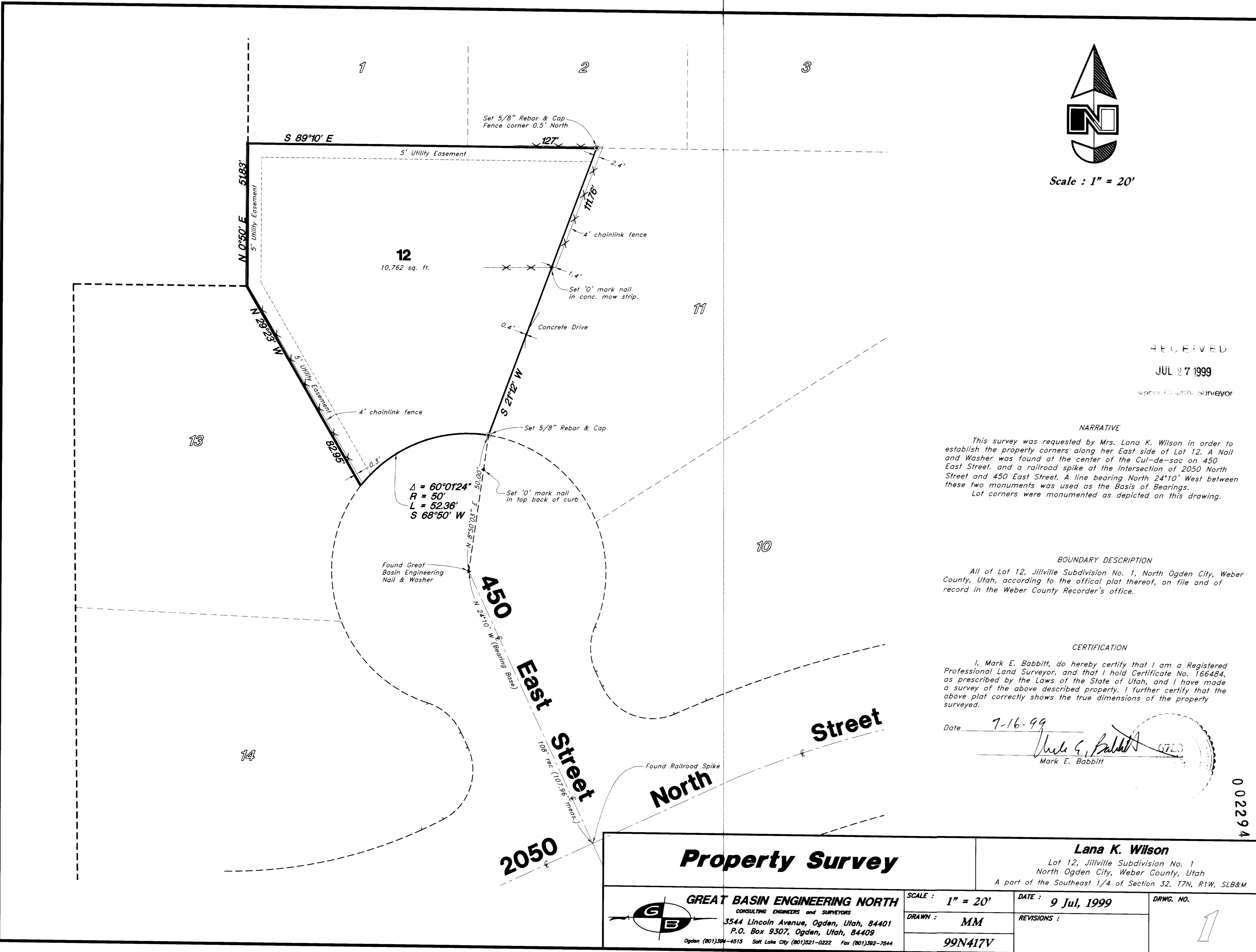
CERTIFICATION

I, Mark E. Babbitt, do hereby certify that I am a Registered Professional Land Surveyor, and that I hold Certificate No. 166484, as prescribed by the Laws of the State of Utah, and I have made a survey of the above described property. I further certify that the above plat correctly shows the true dimensions of the property surveyed.

Date 7-16-99

Mark E. Babbitt

002294



Property Survey

Lana K. Wilson

Lot 12, Jillville Subdivision No. 1
North Ogden City, Weber County, Utah
A part of the Southeast 1/4 of Section 32, T7N, R1W, SLB&M

GREAT BASIN ENGINEERING NORTH
CONSULTING ENGINEERS and SURVEYORS
3544 Lincoln Avenue, Ogden, Utah, 84401
P.O. Box 9307, Ogden, Utah, 84409
Ogden (801)309-4515 Salt Lake City (801)521-0222 Fax (801)302-7544

SCALE : 1" = 20'

DATE : 9 Jul, 1999

DRWG. NO.

DRAWN : MM

REVISIONS :

99N417V

1