

DRAWING NUMBER
002306

DRAWING NUMBER
002306

DRAWING NUMBER
002306

DRAWING NUMBER
002306

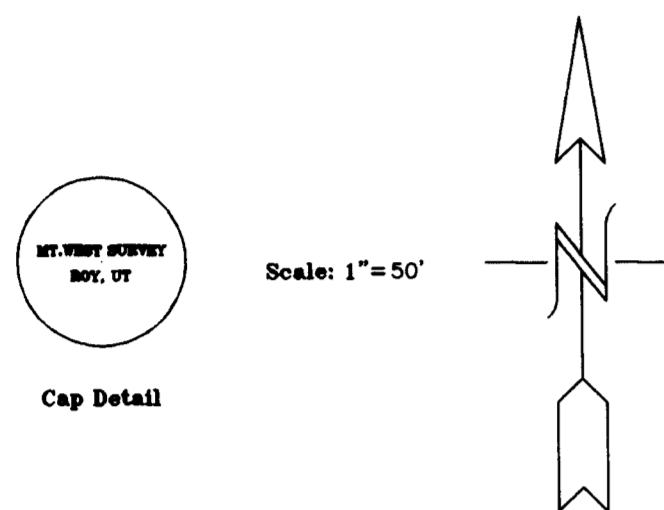
PLAN HOLD CORPORATION • IRVINE, CALIFORNIA
REORDER BY NUMBER 075AR

PLAN HOLD CORPORATION • IRVINE, CALIFORNIA
REORDER BY NUMBER 075AR

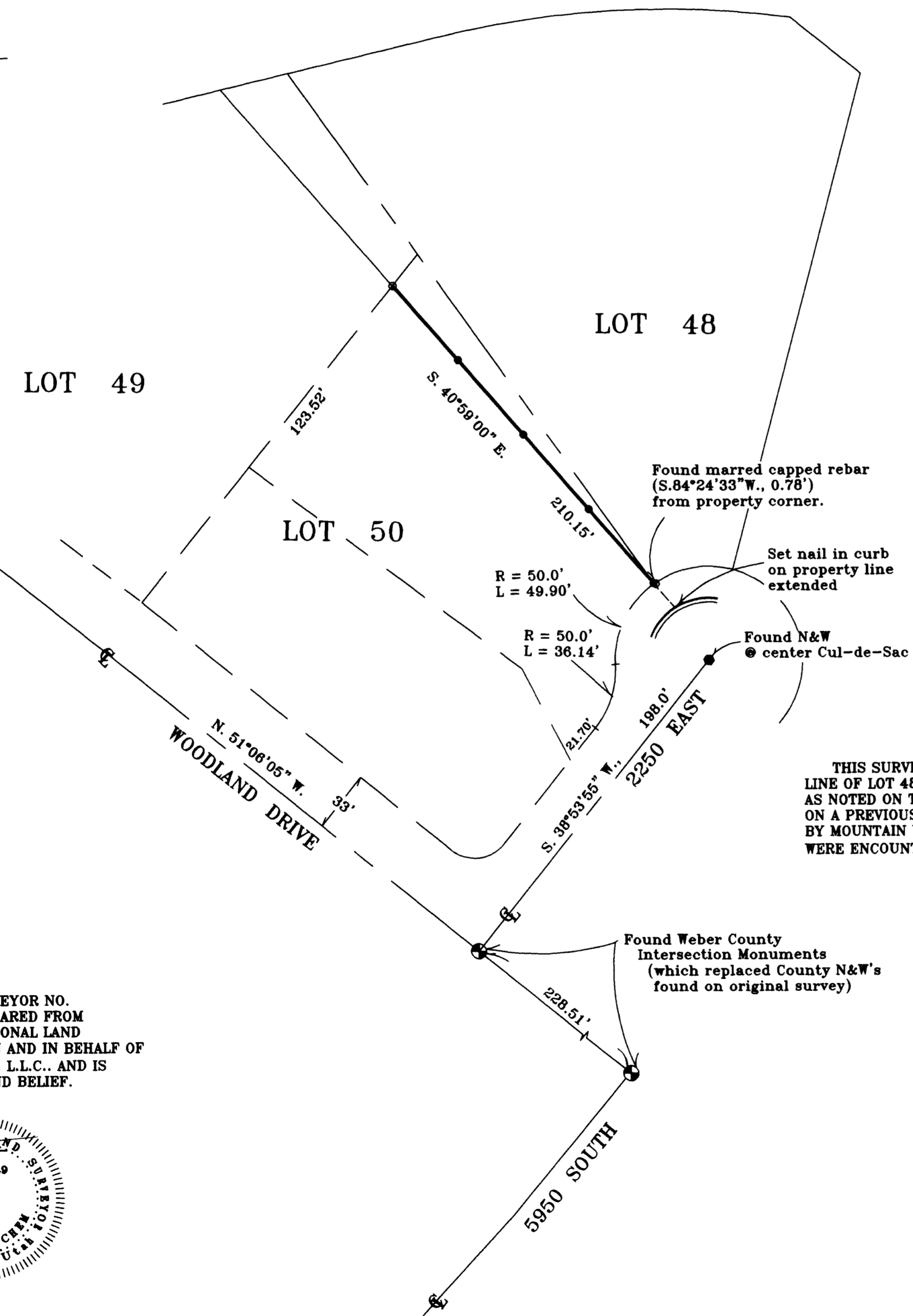
PLAN HOLD CORPORATION • IRVINE, CALIFORNIA
REORDER BY NUMBER 075AR

PLAN HOLD CORPORATION • IRVINE, CALIFORNIA
REORDER BY NUMBER 075AR

RECORD OF SURVEY



LEGEND: ● DENOTES A SET #5 CAPPED REBAR, 24" LONG
○ DENOTES A FOUND CAPPED REBAR
N&W = NAIL AND WASHER



NARRATIVE OF SURVEY

THIS SURVEY IS FOR THE PURPOSE OF REESTABLISHING THE SOUTHWESTERLY LINE OF LOT 48. WEBER COUNTY MONUMENTS AND A NAIL & WASHER ON THE STREET CENTERLINE, AS NOTED ON THE BODY OF THIS PLAT, WERE USED AS CONTROL. THESE POINTS WERE FOUND ON A PREVIOUS SURVEY OF ROBERT SUBDIVISION OF LOT 50, WOODLAND ESTATES UNIT 2 BY MOUNTAIN WEST PROFESSIONAL LAND SURVEYORS, P.C. NO PROBLEMS OF CONSEQUENCE WERE ENCOUNTERED.

PARCEL DESCRIPTION
LOT 48, WOODLAND ESTATES UNIT 2

SURVEYOR'S CERTIFICATE
I, DICK N. MECHEM, UTAH PROFESSIONAL LAND SURVEYOR NO. 155649, DO HEREBY CERTIFY THAT THIS PLAT WAS PREPARED FROM PREVIOUS SURVEYS MADE BY MOUNTAIN WEST PROFESSIONAL LAND SURVEYORS P.C.. AT THE REQUEST OF SCOTT PARKINSON AND IN BEHALF OF MOUNTAIN WEST LAND PROFESSIONAL LAND SURVEYORS, L.L.C., AND IS TRUE AND CORRECT TO THE BEST OF MY KNOWLEDGE AND BELIEF.

DICK N. MECHEM P.L.S.
Aug 21 1999

RECEIVED
AUG 16 1999
Weber County Surveyor

RECORD OF SURVEY
for
SCOTT PARKINSON
UTAH DISTRICT, PART OF SECTION 23
Township 5 North, Range 1 West, S.L.B.&M.

Date	Aug. 1999	No.	29-01-99	Draw	DNM	ck'd	DRH
------	-----------	-----	----------	------	-----	------	-----

MountainWest Professional Land Surveyors, L.L.C.
1825 W. 4400 S. PO Box 207
Roy, Utah 84067
Phone: (801) 731-5330 Fax: (801) 731-5331

002306

002306