

DRAWING NUMBER

002307

PLAN HOLD CORPORATION • IRVINE, CALIFORNIA
RECORDER BY NUMBER 075AR

DRAWING NUMBER

002307

PLAN HOLD CORPORATION • IRVINE, CALIFORNIA
RECORDER BY NUMBER 075AR

DRAWING NUMBER

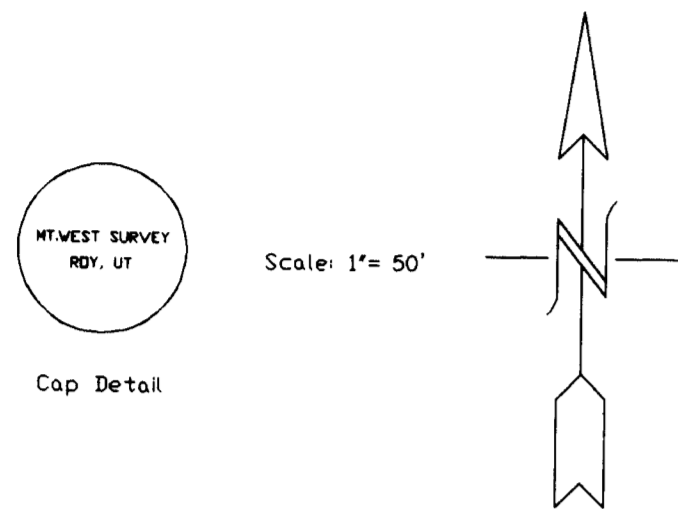
002307

PLAN HOLD CORPORATION • IRVINE, CALIFORNIA
RECORDER BY NUMBER 075AR

DRAWING NUMBER

002307

PLAN HOLD CORPORATION • IRVINE, CALIFORNIA
RECORDER BY NUMBER 075AR
POSITION EDGE OF PRINT ON THIS LINE



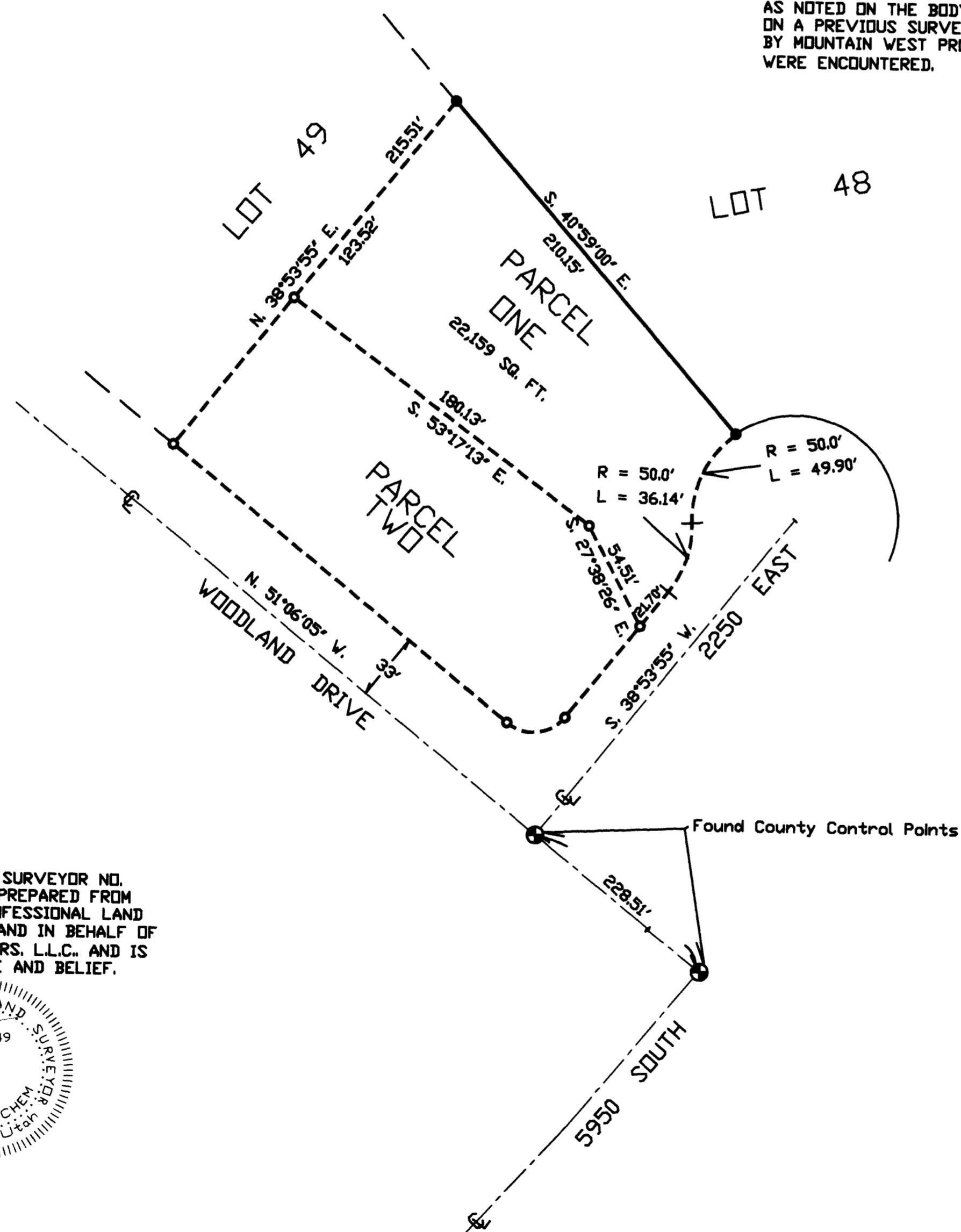
Scale: 1" = 50'

LEGEND: ● DENOTES A SET #5 CAPPED REBAR, 24" LONG
○ DENOTES A FOUND CAPPED REBAR

PARCEL DESCRIPTION
PARCEL ONE, ROBERT SUBDIVISION OF LOT 50, WOODLAND ESTATES UNIT 2

NARRATIVE OF SURVEY

THIS SURVEY IS FOR THE PURPOSE OF REESTABLISHING THE EAST LINE OF PARCEL ONE. CAPPED REBAR SET AT EXISTING PROPERTY CORNERS, AS NOTED ON THE BODY OF THIS PLAT, WERE USED AS CONTROL. THESE POINTS WERE SET ON A PREVIOUS SURVEY OF "ROBERT SUBDIVISION OF LOT 50, WOODLAND ESTATES UNIT 2" BY MOUNTAIN WEST PROFESSIONAL LAND SURVEYORS, P.C. NO PROBLEMS OF CONSEQUENCE WERE ENCOUNTERED.



SURVEYOR'S CERTIFICATE

I, DICK N. MECHEM, UTAH PROFESSIONAL LAND SURVEYOR NO. 155649, DO HEREBY CERTIFY THAT THIS PLAT WAS PREPARED FROM PREVIOUS SURVEYS MADE BY MOUNTAIN WEST PROFESSIONAL LAND SURVEYORS P.C., AT THE REQUEST OF GENE HARRIS AND IN BEHALF OF MOUNTAIN WEST LAND PROFESSIONAL LAND SURVEYORS, L.L.C., AND IS TRUE AND CORRECT TO THE BEST OF MY KNOWLEDGE AND BELIEF.

Dick N. Mechem
 DICK N. MECHEM P.L.S.
 UTAH PROFESSIONAL LAND SURVEYORS
 #155649
 DICK N. MECHEM
 State of Utah

RECEIVED

AUG 16 1999

Weber County Surveyor

RECORD OF SURVEY
for
GENE HARRIS
UINTAH DISTRICT, PART OF SECTION 23
Township 5 North, Range 1 West, S.L.B.&M.

Date FEB 1997	No. 68-01-96	Draw DRH	Check DNM
---------------	--------------	----------	-----------

MountainWest Professional Land Surveyors, L.L.C.
 1823 V. 4400 S. PO Box 207
 Roy, Utah 84067
 Phone: (801) 731-5330 Fax: (801) 731-5331

002307