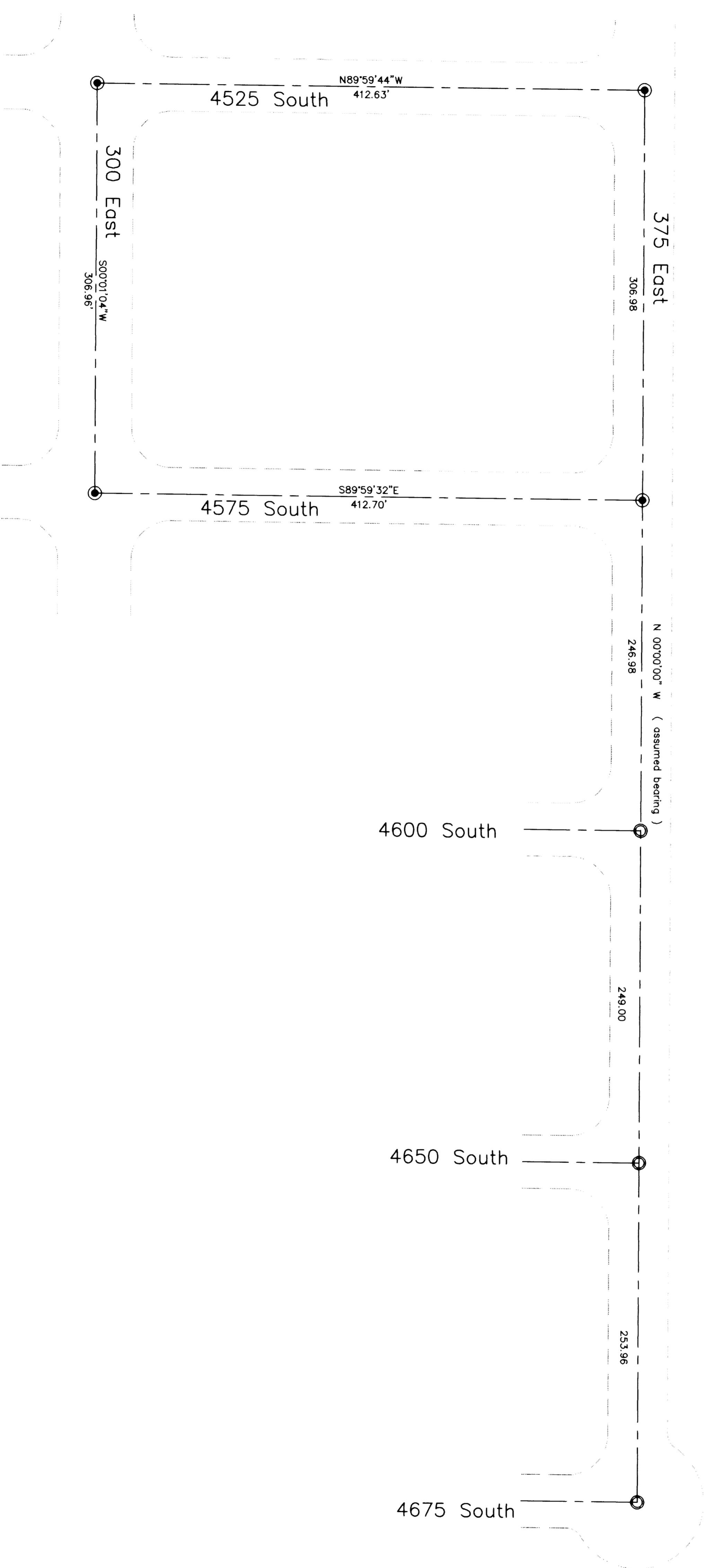


RECORD OF SURVEY
CENTERLINE MONUMENTATION OF
375 EAST, 300 EAST, 4525 SOUTH, AND 4575 SOUTH
CITY OF WASHINGTON TERRACE

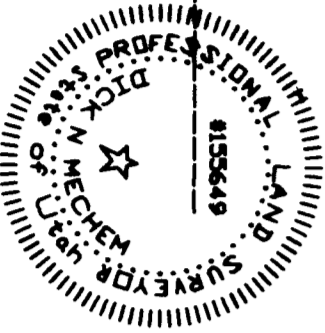


Scale: 1"=50'

Surveyors Certificate

I, Dick N. Mechem, do hereby certify that I am a Professional Land Surveyor of the State of Utah, and that this drawing consisting of one sheet is a true and complete representation of a survey made by me, in May 1999 for City of Washington Terrace and in behalf of Mountain West P.L.S., L.L.C. and that all monuments shown hereon are of the character and occupy the positions indicated and are sufficient to enable the survey to be retraced.

Dick N. Mechem, P.L.S.
Date
No. 155649



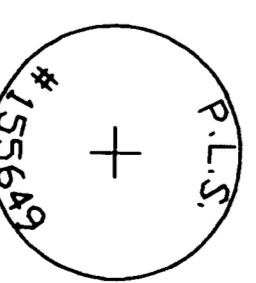
Narrative and Statement of Purpose

This survey was performed for the purpose of reestablishing the centerline monuments, of the monuments noted on the drawing, after they were destroyed or to construction. Locations of the monuments in relation to existing centerline monuments were determined before the monuments were taken out. These some points were used to survey the locations for the new monuments.

LEGEND

- DENOTES A SET BRASS, TYPE 1 WELL MONUMENT
- DENOTES A FOUND BRASS MONUMENT

BRASS CAP DETAIL



RECEIVED
AUG 16 1999
Weber County Survey

RECORD OF SURVEY
for
CITY OF WASHINGTON TERRACE

Map Sheet 39
Northwest Professional Land Surveyors, L.L.C.
180 West 10th St.
Salt Lake City, UT 84119
Phone (801) 725-5288 Fax (801) 725-5331