

WEBER COUNTY ATTORNEY

WEBER COUNTY PLANNING COMMISSION

WEBER COUNTY SURVEYOR

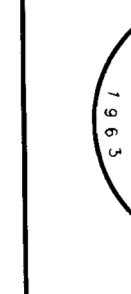
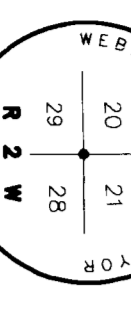
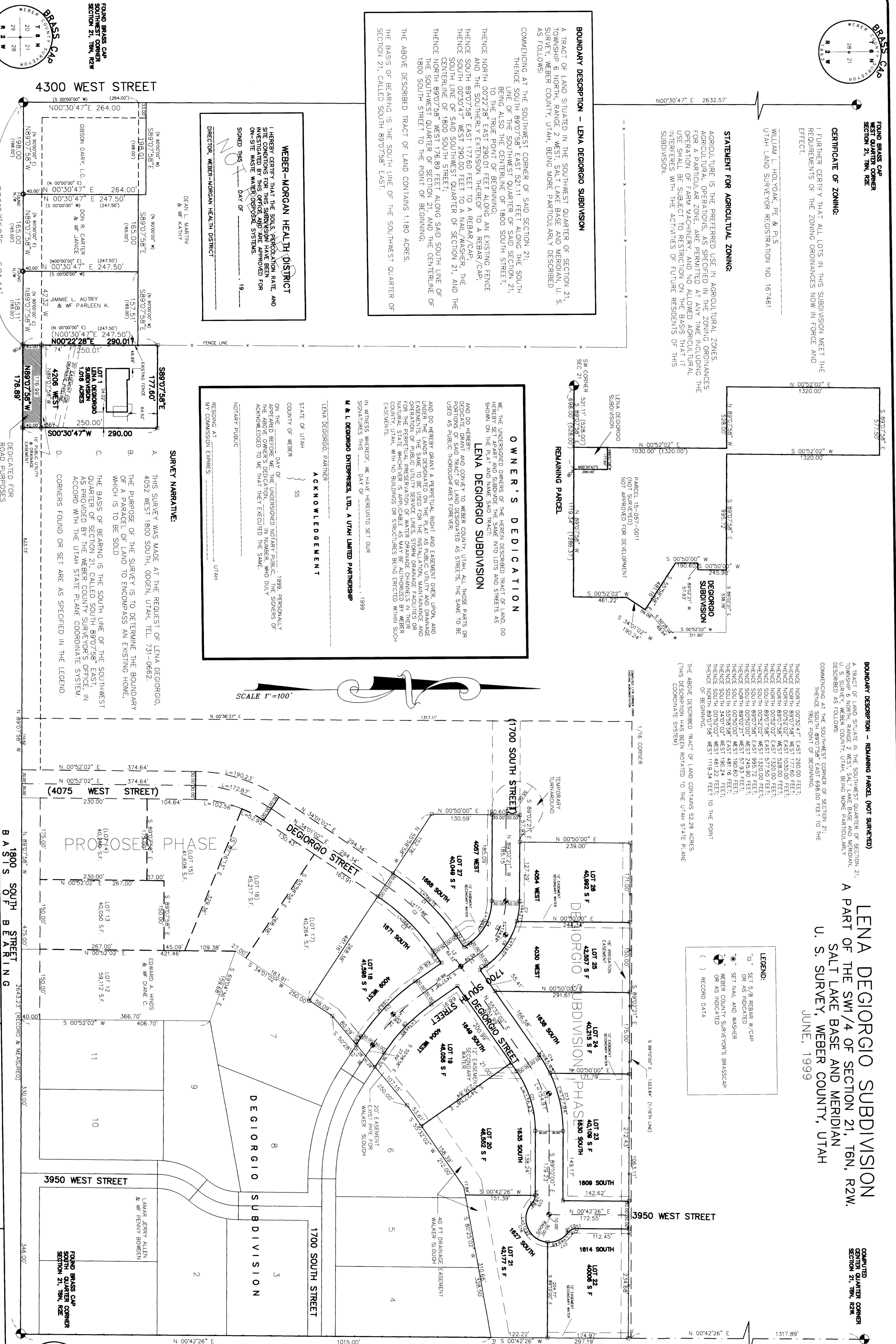
WEBER COUNTY ENGINEER

WEBER COUNTY COMMISSIONERS

CERTIFICATE OF SURVEYOR

WEBER COUNTY RECORDER

WEBER COUNTY RECORDER



4300 WEST STREET

3950 WEST STREET

1700 SOUTH STREET

1900 SOUTH STREET

4075 WEST STREET

REMAINING PARCEL

OWNER'S DEDICATION

BOUNDARY DESCRIPTION - REMAINING PARCEL (NOT SURVEYED)

BOUNDARY DESCRIPTION - LENA DEGIORGIO SUBDIVISION

STATEMENT FOR AGRICULTURAL ZONING

CERTIFICATE OF ZONING

WEBER-MORGAN HEALTH DISTRICT

STATEMENT FOR AGRICULTURAL ZONING... AGRICULTURE IS THE PREFERRED USE IN AGRICULTURAL ZONES...

CERTIFICATE OF ZONING... I FURTHER CERTIFY THAT ALL LOTS IN THIS SUBDIVISION MEET THE REQUIREMENTS OF THE ZONING ORDINANCES NOW IN FORCE AND EFFECT.

WEBER-MORGAN HEALTH DISTRICT... I HEREBY CERTIFY THAT THE SOLID WASTE COLLECTION RATE AND THE SOLID WASTE WATER DISPOSAL SYSTEM APPROVED FOR THIS SUBDIVISION ARE APPROVED FOR ON-SITE WASTE WATER DISPOSAL SYSTEMS.

OWNER'S DEDICATION... THE UNDERSIGNED OWNERS OF THE HEREIN DESCRIBED TRACT OF LAND, DO HEREBY SET APART AND SUBDIVIDE THE SAID TRACT INTO LOTS AND STREETS AS SHOWN ON THIS PLAN AND SUBDIVIDE THE SAME INTO LOTS AND STREETS AS SHOWN ON THIS PLAN...

BOUNDARY DESCRIPTION - REMAINING PARCEL (NOT SURVEYED)... A TRACT OF LAND SITUATE IN THE SOUTHWEST QUARTER OF SECTION 21, TOWNSHIP 6 NORTH, RANGE 2 WEST, SALT LAKE BASE AND MERIDIAN U.S. SURVEY, WEBER COUNTY, UTAH, BEING MORE PARTICULARLY DESCRIBED AS FOLLOWS:

STATEMENT FOR AGRICULTURAL ZONING... AGRICULTURE IS THE PREFERRED USE IN AGRICULTURAL ZONES, AGRICULTURAL OPERATIONS, AS SPECIFIED IN ANY ZONING ORDINANCES FOR A PARTICULAR ZONE, ARE PERMITTED AT ANY TIME INCLUDING THE OPERATION OF FARM VETERINARY CLINICS AND THE OPERATION OF THE BUSINESS OF FARMERS AND RANCHERS ON THE BASIS THAT IT DOES NOT INTERFERE WITH THE ACTIVITIES OF FUTURE RESIDENTS OF THIS SUBDIVISION.

CERTIFICATE OF ZONING... I FURTHER CERTIFY THAT ALL LOTS IN THIS SUBDIVISION MEET THE REQUIREMENTS OF THE ZONING ORDINANCES NOW IN FORCE AND EFFECT.

WEBER-MORGAN HEALTH DISTRICT... I HEREBY CERTIFY THAT THE SOLID WASTE COLLECTION RATE AND THE SOLID WASTE WATER DISPOSAL SYSTEM APPROVED FOR THIS SUBDIVISION ARE APPROVED FOR ON-SITE WASTE WATER DISPOSAL SYSTEMS.

OWNER'S DEDICATION... THE UNDERSIGNED OWNERS OF THE HEREIN DESCRIBED TRACT OF LAND, DO HEREBY SET APART AND SUBDIVIDE THE SAID TRACT INTO LOTS AND STREETS AS SHOWN ON THIS PLAN AND SUBDIVIDE THE SAME INTO LOTS AND STREETS AS SHOWN ON THIS PLAN...

BOUNDARY DESCRIPTION - REMAINING PARCEL (NOT SURVEYED)... A TRACT OF LAND SITUATE IN THE SOUTHWEST QUARTER OF SECTION 21, TOWNSHIP 6 NORTH, RANGE 2 WEST, SALT LAKE BASE AND MERIDIAN U.S. SURVEY, WEBER COUNTY, UTAH, BEING MORE PARTICULARLY DESCRIBED AS FOLLOWS:

STATEMENT FOR AGRICULTURAL ZONING... AGRICULTURE IS THE PREFERRED USE IN AGRICULTURAL ZONES, AGRICULTURAL OPERATIONS, AS SPECIFIED IN ANY ZONING ORDINANCES FOR A PARTICULAR ZONE, ARE PERMITTED AT ANY TIME INCLUDING THE OPERATION OF FARM VETERINARY CLINICS AND THE OPERATION OF THE BUSINESS OF FARMERS AND RANCHERS ON THE BASIS THAT IT DOES NOT INTERFERE WITH THE ACTIVITIES OF FUTURE RESIDENTS OF THIS SUBDIVISION.

CERTIFICATE OF ZONING... I FURTHER CERTIFY THAT ALL LOTS IN THIS SUBDIVISION MEET THE REQUIREMENTS OF THE ZONING ORDINANCES NOW IN FORCE AND EFFECT.

WEBER-MORGAN HEALTH DISTRICT... I HEREBY CERTIFY THAT THE SOLID WASTE COLLECTION RATE AND THE SOLID WASTE WATER DISPOSAL SYSTEM APPROVED FOR THIS SUBDIVISION ARE APPROVED FOR ON-SITE WASTE WATER DISPOSAL SYSTEMS.

OWNER'S DEDICATION... THE UNDERSIGNED OWNERS OF THE HEREIN DESCRIBED TRACT OF LAND, DO HEREBY SET APART AND SUBDIVIDE THE SAID TRACT INTO LOTS AND STREETS AS SHOWN ON THIS PLAN AND SUBDIVIDE THE SAME INTO LOTS AND STREETS AS SHOWN ON THIS PLAN...

BOUNDARY DESCRIPTION - REMAINING PARCEL (NOT SURVEYED)... A TRACT OF LAND SITUATE IN THE SOUTHWEST QUARTER OF SECTION 21, TOWNSHIP 6 NORTH, RANGE 2 WEST, SALT LAKE BASE AND MERIDIAN U.S. SURVEY, WEBER COUNTY, UTAH, BEING MORE PARTICULARLY DESCRIBED AS FOLLOWS:

STATEMENT FOR AGRICULTURAL ZONING... AGRICULTURE IS THE PREFERRED USE IN AGRICULTURAL ZONES, AGRICULTURAL OPERATIONS, AS SPECIFIED IN ANY ZONING ORDINANCES FOR A PARTICULAR ZONE, ARE PERMITTED AT ANY TIME INCLUDING THE OPERATION OF FARM VETERINARY CLINICS AND THE OPERATION OF THE BUSINESS OF FARMERS AND RANCHERS ON THE BASIS THAT IT DOES NOT INTERFERE WITH THE ACTIVITIES OF FUTURE RESIDENTS OF THIS SUBDIVISION.

CERTIFICATE OF ZONING... I FURTHER CERTIFY THAT ALL LOTS IN THIS SUBDIVISION MEET THE REQUIREMENTS OF THE ZONING ORDINANCES NOW IN FORCE AND EFFECT.

CERTIFICATE OF SURVEYOR... I, WILLIAM L. HODGOK, A REGISTERED LAND SURVEYOR IN THE STATE OF UTAH, DO HEREBY CERTIFY THAT THIS PLAN OF SUBDIVISION IS IN ACCORD WITH THE PUBLIC INTEREST AND THE REQUIREMENTS OF THE UTAH LAND SURVEYOR REGISTRATION ACT, AND THAT THE DATA COMPILED FROM RECORDS IN THE WEBER COUNTY RECORDER'S OFFICE AND FROM A SURVEY MADE ON THE GROUND OVERSAY IN OBSERVATION.

WEBER COUNTY ATTORNEY

WEBER COUNTY PLANNING COMMISSION

WEBER COUNTY SURVEYOR

WEBER COUNTY ENGINEER

WEBER COUNTY COMMISSIONERS

WEBER COUNTY RECORDER

WEBER COUNTY ATTORNEY

WEBER COUNTY PLANNING COMMISSION

WEBER COUNTY SURVEYOR

WEBER COUNTY ENGINEER

WEBER COUNTY COMMISSIONERS

WEBER COUNTY RECORDER

WEBER COUNTY ATTORNEY

WEBER COUNTY PLANNING COMMISSION

WEBER COUNTY SURVEYOR

WEBER COUNTY ENGINEER

WEBER COUNTY COMMISSIONERS

WEBER COUNTY RECORDER

WEBER COUNTY ATTORNEY

WEBER COUNTY PLANNING COMMISSION

WEBER COUNTY SURVEYOR

WEBER COUNTY ENGINEER

WEBER COUNTY COMMISSIONERS

WEBER COUNTY RECORDER

WEBER COUNTY ATTORNEY

WEBER COUNTY PLANNING COMMISSION

WEBER COUNTY SURVEYOR

WEBER COUNTY ENGINEER

WEBER COUNTY COMMISSIONERS

WEBER COUNTY RECORDER

WEBER COUNTY ATTORNEY

WEBER COUNTY PLANNING COMMISSION

WEBER COUNTY SURVEYOR

WEBER COUNTY ENGINEER

WEBER COUNTY COMMISSIONERS

WEBER COUNTY RECORDER

WEBER COUNTY ATTORNEY

WEBER COUNTY PLANNING COMMISSION

WEBER COUNTY SURVEYOR

WEBER COUNTY ENGINEER

WEBER COUNTY COMMISSIONERS

WEBER COUNTY RECORDER

REVISIONS table, DESIGNED BY, DATE, RECEIVED stamp, and MOUNTAIN ENGINEERING logo and contact information.

LENNA DEGIORGIO SUBDIVISION A PART OF THE SW1/4 OF SECTION 21, T6N, R2W. SALT LAKE BASE AND MERIDIAN U. S. SURVEY, WEBER COUNTY, UTAH