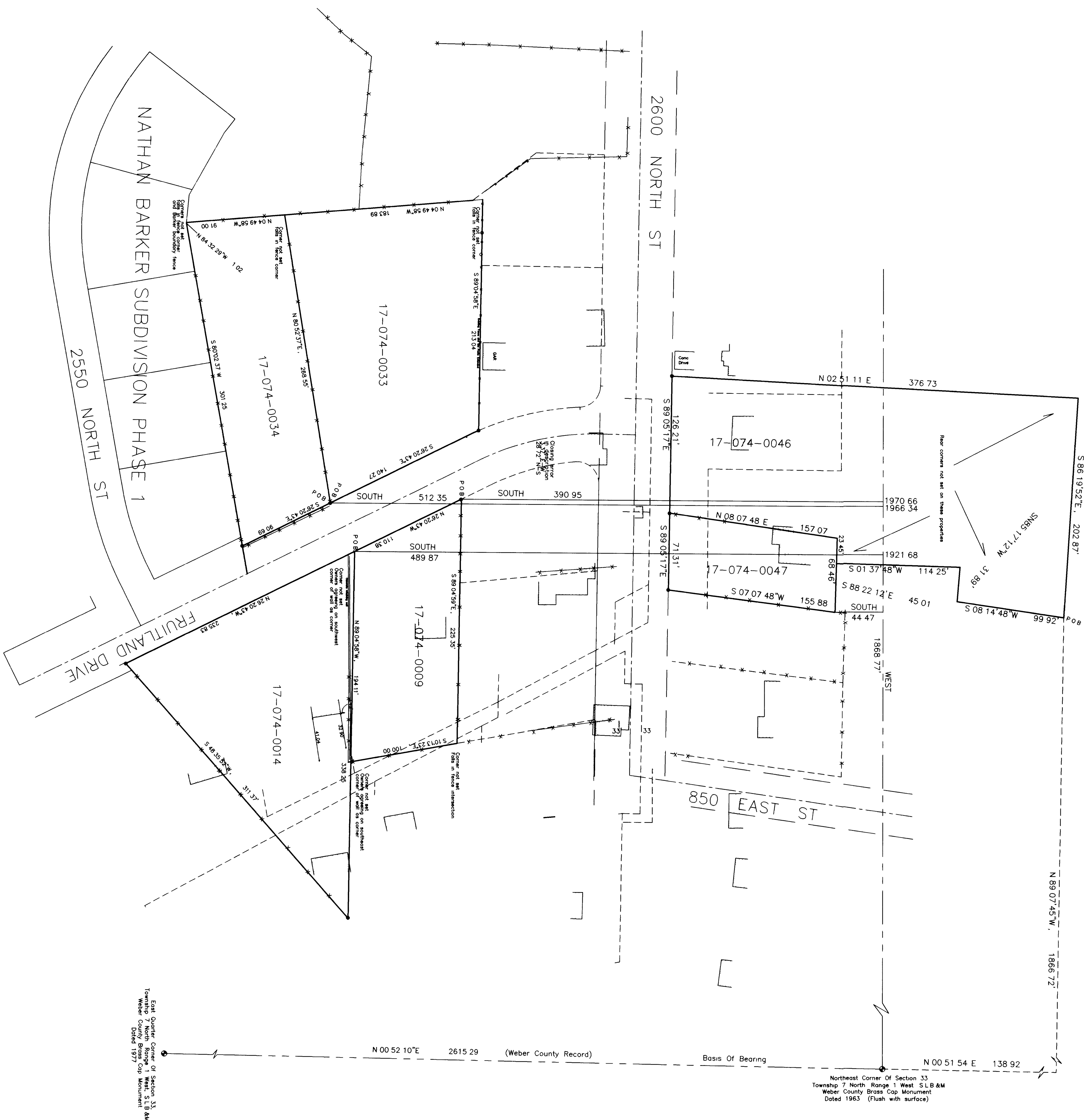


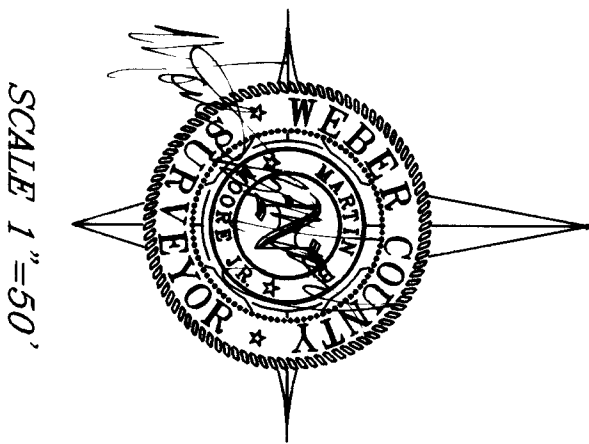
WEBER COUNTY SURVEY OFFICE AUTOCAD DRAFTING SYSTEM - FILE-VECTOR



East Quarter Corner of Section 33, Township 7 North, Range 1 West, Salt Lake Base and Meridian, U.S. Survey, and Decoded as follows: 2615.29' N 00° 52' 10" E 2615.29' to the point of beginning and containing 0.89 of an acre, more or less.

Northeast Corner of Section 33, Township 7 North, Range 1 West, Salt Lake Base and Meridian, U.S. Survey, and Decoded as follows: 138.92' N 00° 51' 54" E 138.92' to the point of beginning and containing 0.89 of an acre, more or less.

LEGEND
● SET #3 CORNER MARK, 24" LONG
○ CORNER MARK
--- EXISTING FENCE



NARRATIVE
The purpose of this survey was to locate corner corners on the parcels shown herein at the request of Nathan Barker Corp. and to establish the location of the east line of the northeast quarter of section 33, township 7 north, range 1 west, salt lake base and meridian, U.S. survey, and decoded as follows: 2615.29' N 00° 52' 10" E 2615.29' to the point of beginning and containing 0.89 of an acre, more or less.

Description of Parcel
Description of Parcel was the part contained in a finished plat.
Description of Parcel was the part contained in a finished plat.
Description of Parcel was the part contained in a finished plat.

WEBER COUNTY SURVEYORS' CERTIFICATE
I, MARTIN B. MOORE, JR., HAVING BEEN DULY ELECTED AS THE SURVEYOR OF THE COUNTY OF WEBER, STATE OF UTAH, HAVE MADE A SURVEY OF THE PARCELS OF LAND SHOWN HEREON, THAT WERE CLAIMED BY THE PARTIES TO THIS SURVEY, AND THAT THIS PLAT IS AN ACCURATE RECORD OF THE SURVEY.
Witness my hand and the seal of my office at Ogden, Utah, this 1st day of October, 1997.

Description of Parcel
Description of Parcel was the part contained in a finished plat.
Description of Parcel was the part contained in a finished plat.
Description of Parcel was the part contained in a finished plat.

RECORD OF SURVEY
for
NORTH OGDEN CITY CORP.
PART OF THE NE 1/4 OF SECTION 33,
TOWNSHIP 7 NORTH, RANGE 1 WEST,
SALT LAKE BASE AND MERIDIAN

WEBER COUNTY SURVEYING
Surveyors: Ernest D. Rowley, Chief Deputy; Steven L. Johnson, Deputy; Ogden, Utah 84401
Survey Filing Number: 112535