

DRAWING NUMBER

002347

PLAN HOLD CORPORATION IRVINE CALIFORNIA
REORDER BY NUMBER 075AR

DRAWING NUMBER

002347

PLAN HOLD CORPORATION IRVINE CALIFORNIA
REORDER BY NUMBER 075AR

DRAWING NUMBER

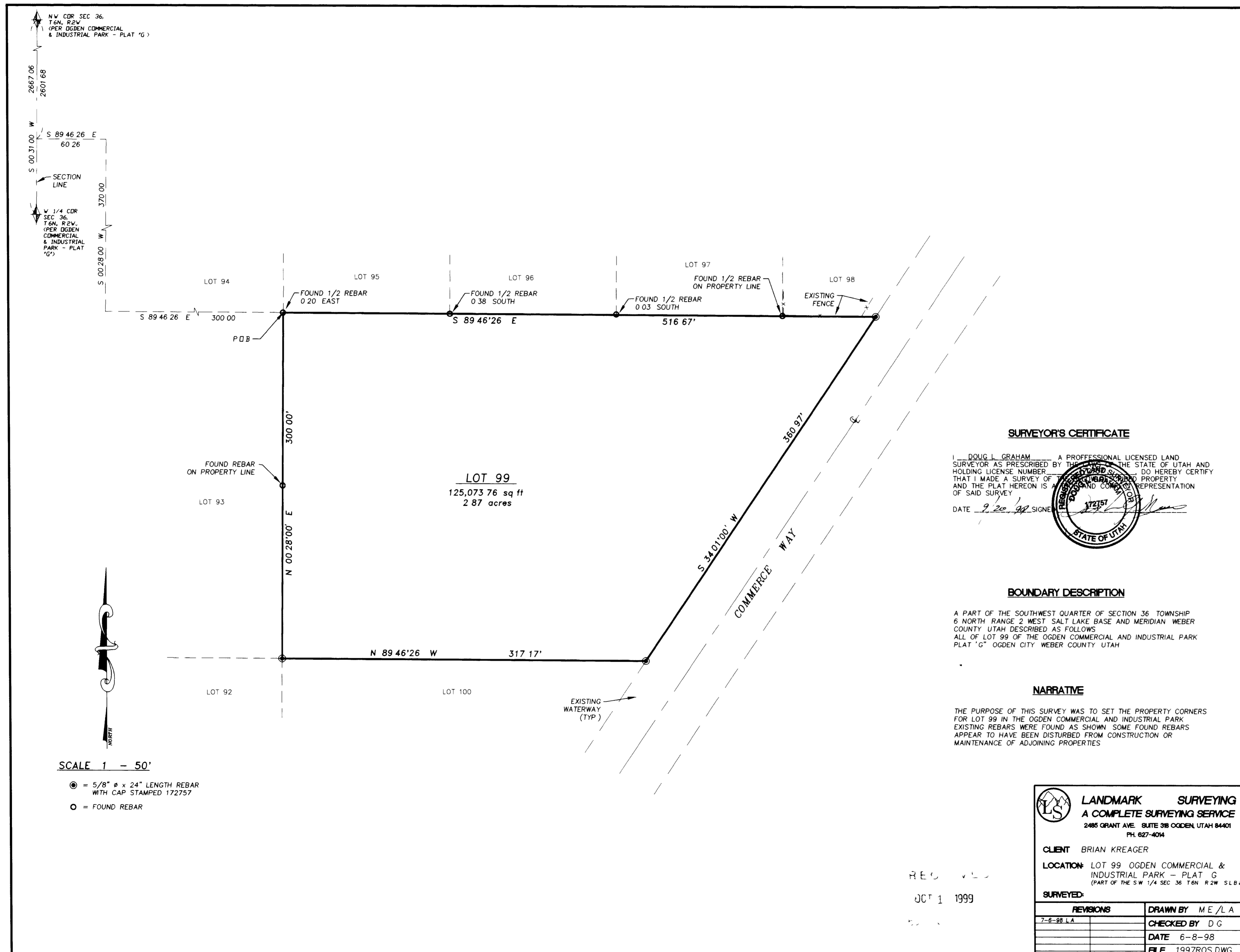
002347

PLAN HOLD CORPORATION IRVINE CALIFORNIA
REORDER BY NUMBER 075AR

DRAWING NUMBER

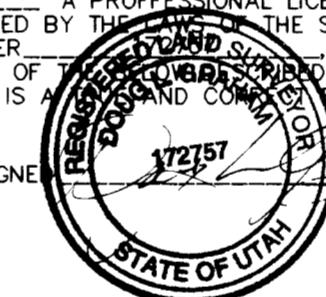
002347

PLAN HOLD CORPORATION IRVINE CALIFORNIA
REORDER BY NUMBER 075AR



SURVEYOR'S CERTIFICATE

I, DOUG L GRAHAM, A PROFESSIONAL LICENSED LAND SURVEYOR AS PRESCRIBED BY THE STATE OF UTAH AND HOLDING LICENSE NUMBER 172757, DO HEREBY CERTIFY THAT I MADE A SURVEY OF LOT 99 OGDEN COMMERCIAL AND INDUSTRIAL PARK - PLAT 'G' AND THE PLAT HEREON IS A TRUE AND CORRECT REPRESENTATION OF SAID SURVEY.
DATE 9-20-98 SIGNED [Signature]



BOUNDARY DESCRIPTION

A PART OF THE SOUTHWEST QUARTER OF SECTION 36 TOWNSHIP 6 NORTH RANGE 2 WEST SALT LAKE BASE AND MERIDIAN WEBER COUNTY UTAH DESCRIBED AS FOLLOWS:
ALL OF LOT 99 OF THE OGDEN COMMERCIAL AND INDUSTRIAL PARK PLAT 'G' OGDEN CITY WEBER COUNTY UTAH

NARRATIVE

THE PURPOSE OF THIS SURVEY WAS TO SET THE PROPERTY CORNERS FOR LOT 99 IN THE OGDEN COMMERCIAL AND INDUSTRIAL PARK. EXISTING REBARS WERE FOUND AS SHOWN. SOME FOUND REBARS APPEAR TO HAVE BEEN DISTURBED FROM CONSTRUCTION OR MAINTENANCE OF ADJOINING PROPERTIES.

LANDMARK SURVEYING
A COMPLETE SURVEYING SERVICE
2485 GRANT AVE. SUITE 318 OGDEN, UTAH 84401
PH. 627-4014

CLIENT BRIAN KREAGER

LOCATION LOT 99 OGDEN COMMERCIAL & INDUSTRIAL PARK - PLAT 'G'
(PART OF THE S W 1/4 SEC 36 T6N R2W SLB 84M)

SURVEYED:

REVISIONS	DRAWN BY	M E / L A
	CHECKED BY	D G
	DATE	6-8-98
	FILE	1997R05 DWG

SCALE 1" = 50'

- = 5/8" # x 24" LENGTH REBAR WITH CAP STAMPED 172757
- = FOUND REBAR

002347

002347