

DRAWING NUMBER

002385

PLAN HOLD CORPORATION • IRVINE, CALIFORNIA
REGISTERED NUMBER 017568

DRAWING NUMBER

002385

PLAN HOLD CORPORATION • IRVINE, CALIFORNIA
REGISTERED NUMBER 017568

DRAWING NUMBER

002385

PLAN HOLD CORPORATION • IRVINE, CALIFORNIA
REGISTERED NUMBER 017568

DRAWING NUMBER

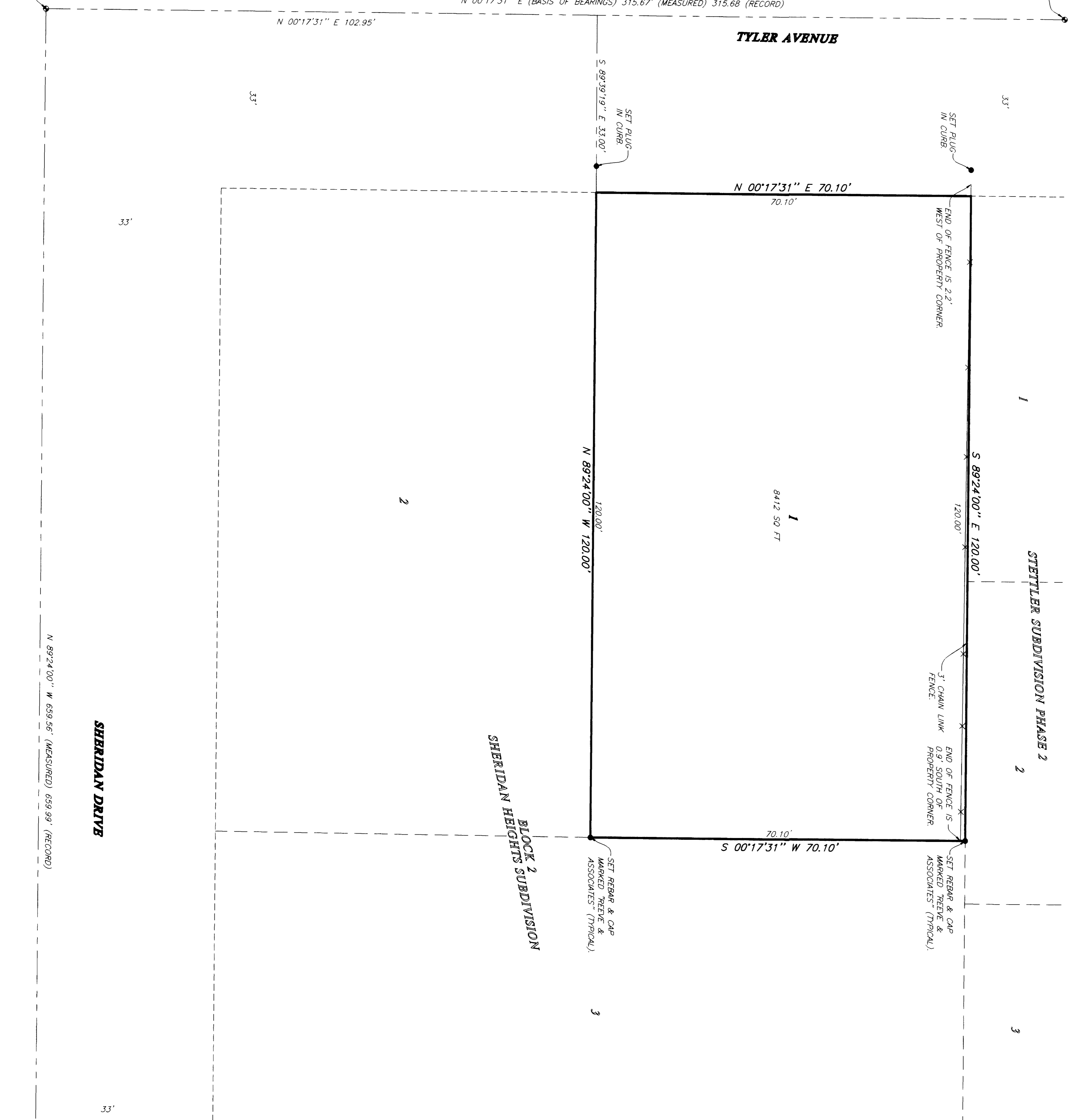
002385

PLAN HOLD CORPORATION • IRVINE, CALIFORNIA
REGISTERED NUMBER 017568

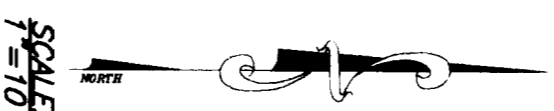
© \DRAWING\SHARED\3650\01\BOPHY.dwg Wed Jan 05 09:25:30 2000 H.BUN

FOUND OGDEN CITY STREET
MONUMENT AT THE
INTERSECTION OF TYLER
AVENUE AND SHERIDAN DRIVE.

FOUND OGDEN CITY STREET
MONUMENT AT THE
INTERSECTION OF TYLER
AVENUE AND COOK STREET.



SURVEYOR'S CERTIFICATE
 I, RANDALL L. WILLIARD, DEPOSE AND SAY THAT I AM A LICENSED PROFESSIONAL LAND SURVEYOR, HOLDING UTAH LICENSE NUMBER 128447, THAT I AM THE SURVEYOR OF THE PROPERTY DESCRIBED HEREON AND THAT I HAVE MADE A CAREFUL AND CORRECT SURVEY OF THIS PLAT CORRECTLY DEPICTS THE FINDINGS OF THE SURVEY.
 SIGNED THIS 5TH DAY OF FEBRUARY, 2000
 RANDALL L. WILLIARD
 UTAH LICENSE NUMBER 128447



BASIS OF BEARINGS

THE BASIS OF BEARINGS FOR THIS PLAT IS THE LINE BETWEEN THE STREET MONUMENTS AT THE INTERSECTIONS AT TYLER AVENUE AND SHERIDAN DRIVE AND TYLER AVENUE AND COOK STREET, SHOWN HEREON AS N00°17'31\"/>

NARRATIVE

THE PURPOSE OF THIS PLAT IS TO DENOTE THE BOUNDARY OF LOT 1, BLOCK 2, SHERIDAN HEIGHTS SUBDIVISION, AS SHOWN HEREON. THE SET BY THE FOUND MONUMENTS IN TYLER AVENUE AND SHERIDAN DRIVE.

SURVEYED DESCRIPTION

PART OF THE NORTHWEST QUARTER OF SECTION 15, T6N, R1W, S16&M, U.S. SURVEY;
 ALL OF LOT 1, BLOCK 2, SHERIDAN HEIGHTS SUBDIVISION, WEBER COUNTY, UTAH.

LEGEND

— X — = EXISTING FENCE
 ● = OGDEN CITY STREET MONUMENT

REVISIONS

1.		4.
2.		3.
3.		6.

PROJECT NO.: 3880-01
 DATE: AUGUST 2, 1999
 SOURCE: 1"=100'

DESIGNED BY: S.M. LUTHER
 CHECKED BY: A.A. BOGGS

REEVE & ASSOCIATES, INC.
 ENGINEERS, PLANNERS & SURVEYORS
 3700 OGDEN, UTAH 84401
 (801) 871-5100 FAX (801) 871-2888
 1241 WEST 1,500 SOUTH 5100

RECORD OF SURVEY

ALL OF LOT 1 SHERIDAN HEIGHTS SUBDIVISION
 PART OF BLOCK 2, SHERIDAN HEIGHTS SUBDIVISION
 PART OF THE NORTHWEST QUARTER OF SECTION 15, T6N, R1W, S16&M, U.S. SURVEY
 OGDEN CITY, WEBER COUNTY, UTAH
 JULY, 1999

SHEET 1 OF 1 SHEETS

002385

002385