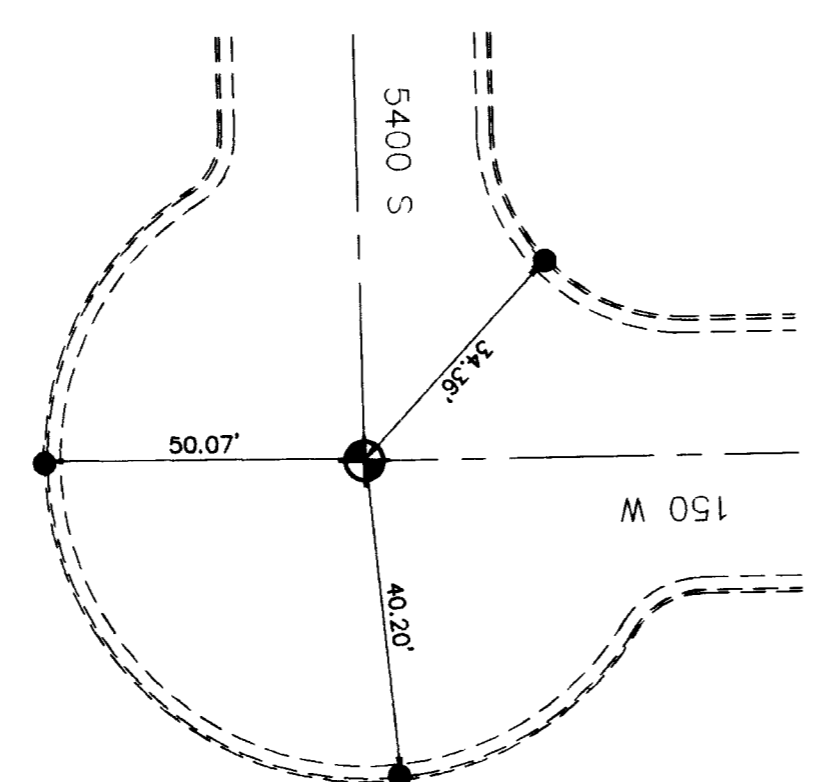
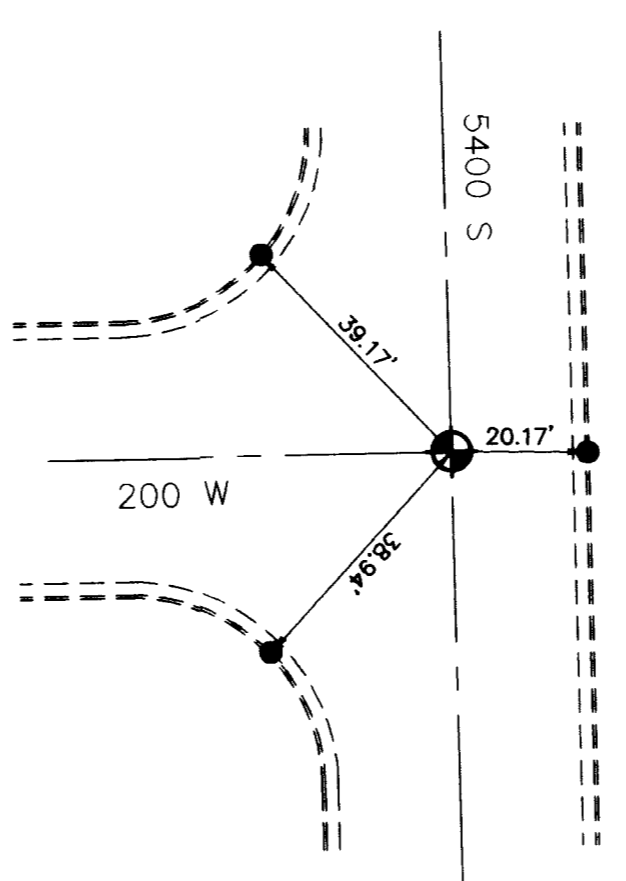
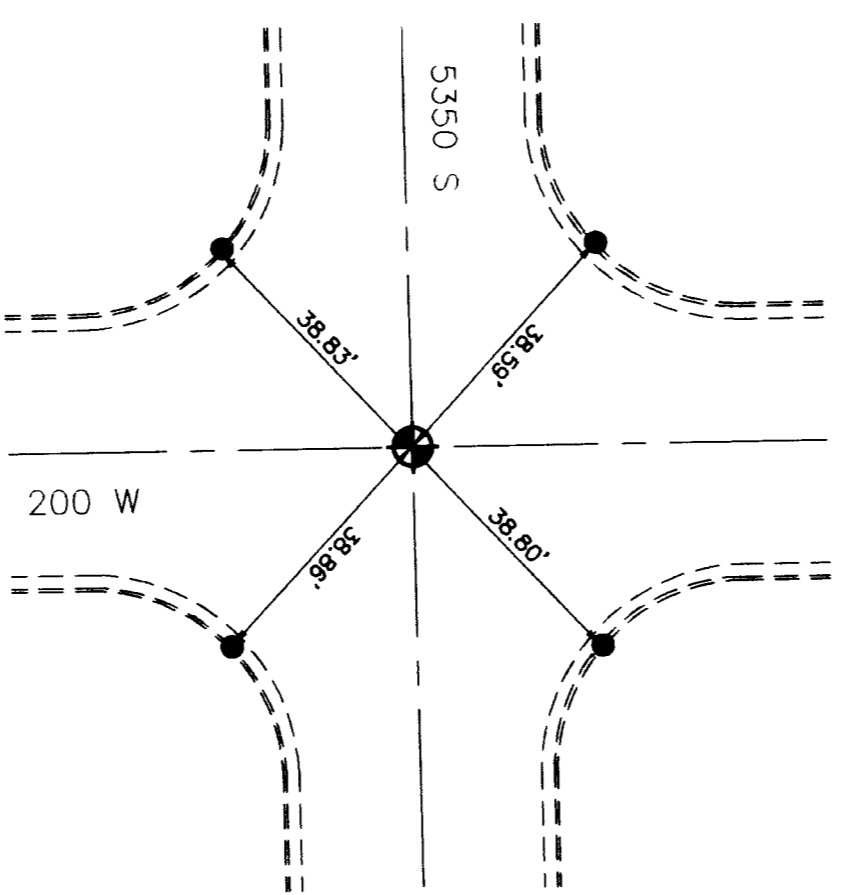
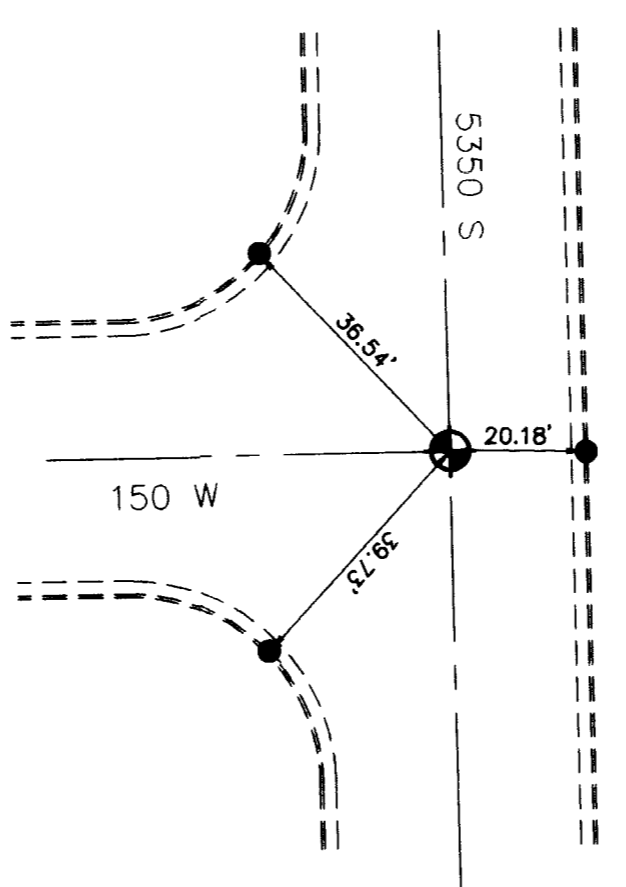
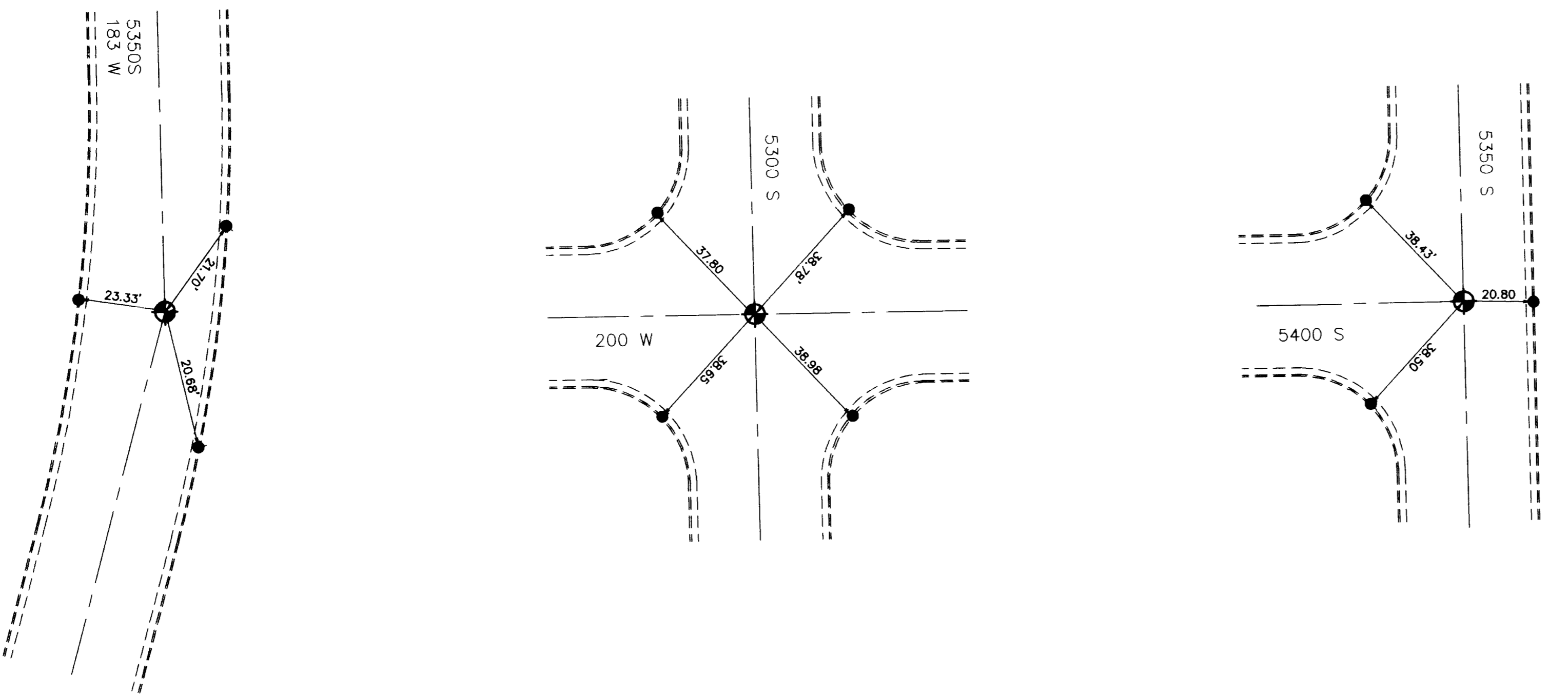
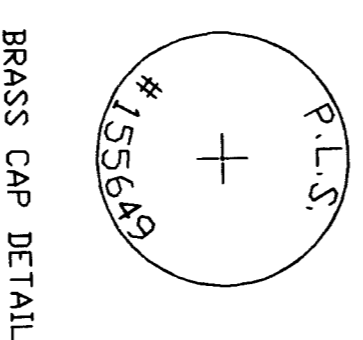


MONUMENTATION REFERENCE MAP
 STREET RECONSTRUCTION
 CITY OF WASHINGTON TERRACE
 December 27 1999



NOT TO SCALE



BRASS CAP DETAIL

Surveyor's Certificate
 I, Dick N. Mechem, do hereby certify that I am a Professional Land Surveyor of the State of Utah and that this drawing consisting of one sheet is a true and complete representation of a survey made by me, in May 1999 for City of Washington Terrace and in behalf of Mountain West P.L.S., L.L.C. and that all monuments shown hereon are of the character and occupy the positions indicated and are sufficient to enable the survey to be retraced.

Dick N. Mechem, P.L.S.
 No. 155649

Date: 12/27/99

Narrative and Statement of Purpose

This survey was performed for the purpose of reestablishing the centerline monuments of the monuments noted on the drawing, after they were destroyed and to construction. Locations of the monuments in relation to reference monuments were determined and set before the monuments were taken out.

- LEGEND**
- REFERENCE NAUL SET ON CENTER OF CURB
 - ◀ MONUMENT LOCATION TO BE REPLACED AFTER CONSTRUCTION

MONUMENT REFERENCE MAP

for

CITY OF WASHINGTON TERRACE

DATE: 12/27/99 No. 106-06-39 License: P.L.S. Dick N. Mechem
 Mountain West P.L.S., L.L.C.
 Roy, Utah 84067
 Phone: (801) 755-5250 Fax: (801) 751-5251