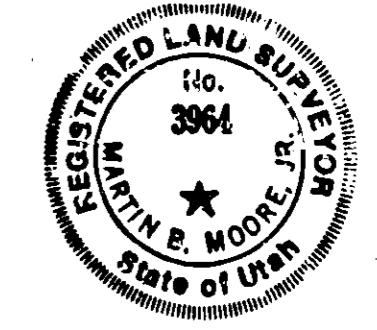


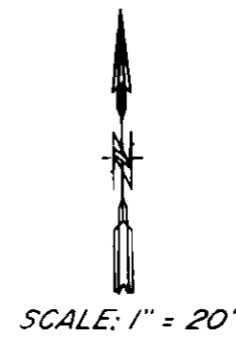
DESCRIPTION OF SURVEYED PARCEL
 BEING A PART OF BLOCK 1, A PART OF BLOCK 2, AND PART OF
 VACATED STREET, HOOPER TOWNSITE PLAT "A", AND DESCRIBED AS
 FOLLOWS:
 BEGINNING AT A POINT WHICH IS S.00°28'00"W., 33.00 FEET,
 AND N.89°58'30"E., 49.5 FEET FROM THE SOUTHEAST CORNER OF
 SAID BLOCK 2, SAID POINT FURTHER BEING S.00°28'00"W. 33 AND
 S.89°58'30"W., 49.5 FEET FROM THE SOUTHWEST CORNER OF SAID
 BLOCK 1, AND RUNNING:
 THENCE S.89°58'30"W., 90.9 FEET;
 THENCE N.00°28'00"E., PASSING THE SOUTH LINE OF BLOCK 2
 AT 33.00 FEET, AND CONTINUING FOR A TOTAL DISTANCE OF 200.00
 FEET;
 THENCE N.89°58'30"E., PASSING THE EAST LINE OF BLOCK 2
 AT 41.4 FEET, AND THE WEST LINE OF BLOCK 1 AT 140.4 FEET,
 AND CONTINUING FOR A TOTAL DISTANCE OF 205.78 FEET;
 THENCE S.00°28'00"W., PASSING THE SOUTH LINE OF BLOCK 1
 AT 167.00 FEET, AND CONTINUING FOR A TOTAL DISTANCE OF
 200.00 FEET;
 THENCE S.89°58'30"W., 114.88 FEET TO THE POINT OF
 BEGINNING AND CONTAINING 0.94 ACRES.

I, MARTIN B. MOORE JR., LICENSED LAND SURVEYOR NO. 3964
 DO HEREBY CERTIFY THAT THIS PLAT WAS PREPARED FROM A SURVEY
 MADE ON THE GROUND BY ME, AT THE REQUEST OF RICK MINTON, AND
 ON BEHALF OF MOUNTAIN WEST PROFESSIONAL LAND SURVEYORS P.C.,
 AND IS TRUE AND CORRECT TO THE BEST OF MY KNOWLEDGE AND
 BELIEF.

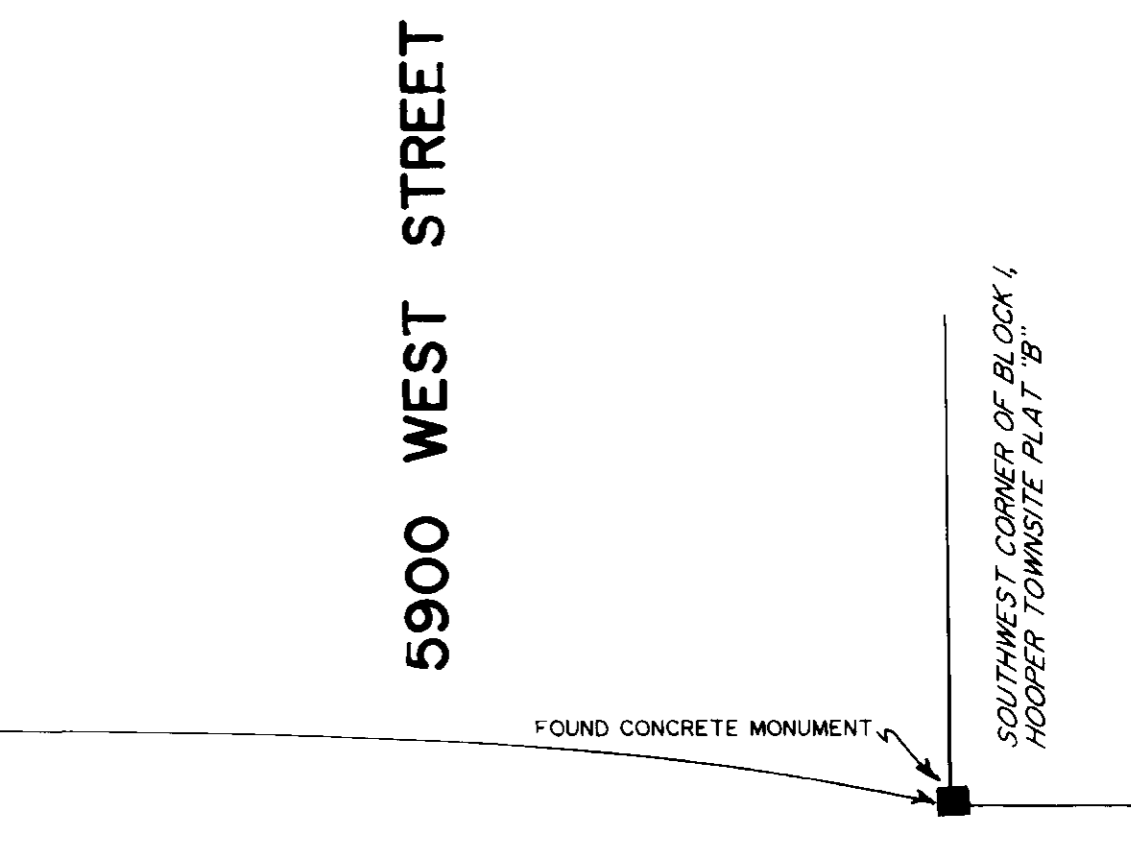
Martin B. Moore Jr.
 MARTIN B. MOORE JR.



NARRATIVE OF SURVEY
 THE PURPOSE OF THIS SURVEY WAS TO ADD TO THE EXISTING
 PARCEL, AND CREATE ONE DESCRIPTION AS SHOWN.
 HOOPER HAS BEEN AN AREA OF PROBLEMS FOR A NUMBER OF
 YEARS, AND CONSEQUENTLY MANY SURVEYS HAVE BEEN CONDUCTED
 USING "MANUFACTURED" CONTROL. THIS COMPANY HAS TAKEN THE
 TIME TO RESEARCH AND FIND CONTROL FOR SURVEYS AS SHOWN ON
 THE PLAT OF 1910, NAMELY THE CONCRETE MONUMENTS SHOWN AT THE
 INTERSECTING CORNERS. ONE MONUMENT IS EXPOSED, AND IS
 SITUATED ONE-HALF MILE WEST OF PLAT "A". AT THE NORTHWEST
 CORNER OF THE INTERSECTION, THE ONLY OTHER MONUMENT FOUND
 INTACT WAS LOCATED AT THE SOUTHWEST CORNER OF BLOCK 1, PLAT
 "B". THIS MONUMENT HAS HAD A BRASS PLATE EMBEDDED IN ITS
 TOP, AND SOME QUESTION CAME UP AS TO ITS VALIDITY, CONCERN
 WAS PUT TO REST, WITH THE FINDING OF A CONCRETE STUMP,
 LOCATED AT THE NORTHWEST CORNER OF PLAT "A", AND WITH THE
 HARMONIOUS OCCUPATIONS OF THE OLDER FENCES LOCATED AT
 VARIOUS PLACES WITHIN THE TOWNSITE.
 WE THEREFORE FEEL THAT WE HAVE MADE AN ACCURATE
 RETRACEMENT OF DESCRIBED PROPERTY, BASED ON RELIABLE SURVEY
 CONTROL DATA.



NOTE: BEARINGS SHOULD BE
 ROTATED 00°32'11" RIGHT TO
 BE ON STATE GRID DATA.



RECEIVED
 AUG 04 1989
 Weber County Surveyor

RECORD OF SURVEY			
FOR			
RICK MINTON			
PART OF BLOCKS 1 & 2 HOOPER TOWNSITE PLAT A			
Date	No	Drawn	Chd
7-26-88	88-1034	MBM	L-AM
MOUNTAIN WEST PROFESSIONAL LAND SURVEYORS, P.C. Roy, Utah			

000240