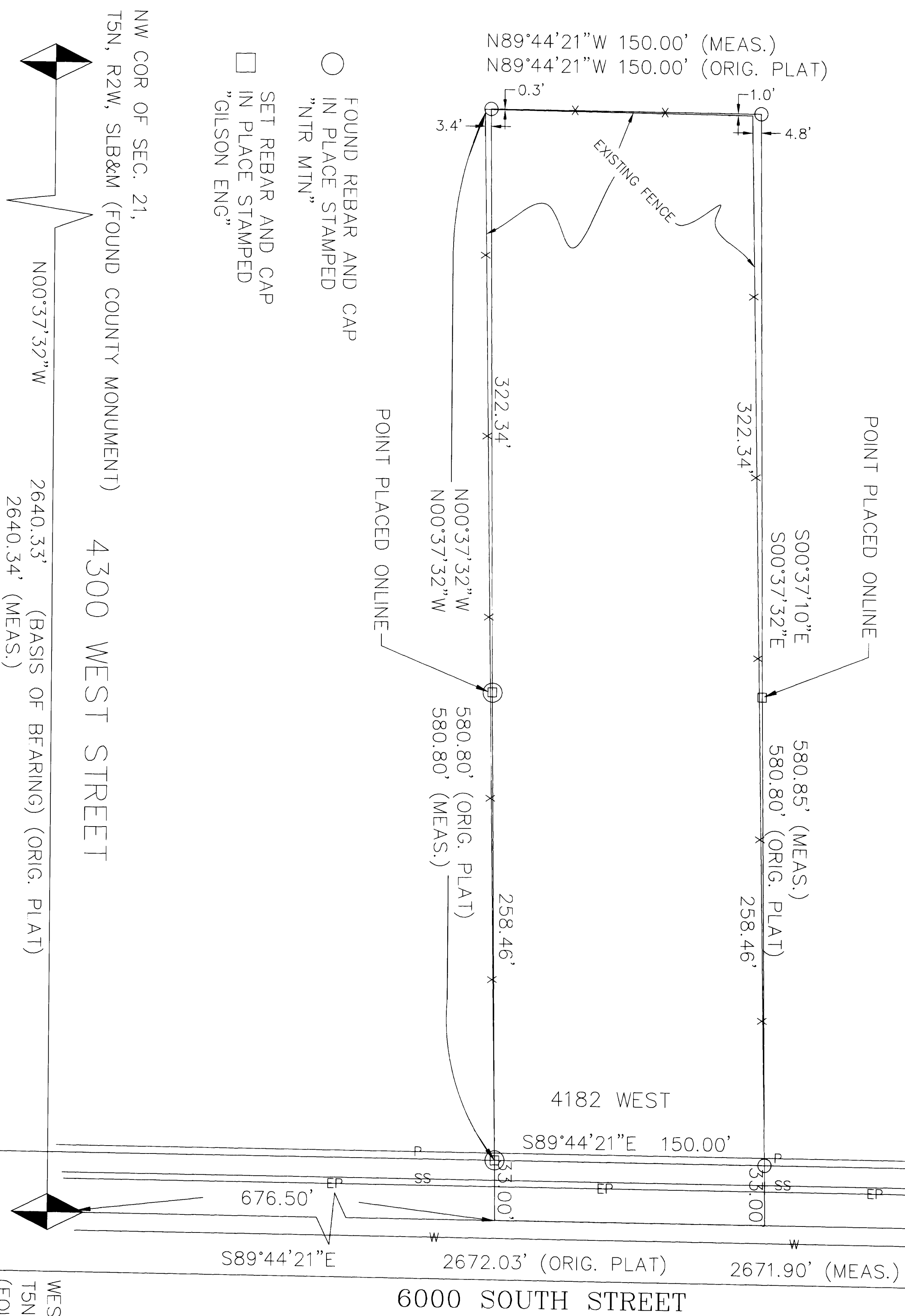


RE-SURVEY OF  
KLEWER ESTATES

LOCATED IN THE NORTHWEST QUARTER OF SECTION  
21, T5N, R2W, S1B&M, US SURVEY  
WEBER COUNTY, UTAH

CENTER OF SEC. 21,  
T5N, R2W, S1B&M  
(FOUND COUNTY MONUMENT)



- FOUND REBAR AND CAP  
IN PLACE STAMPED  
"NTR MTN"
- SET REBAR AND CAP  
IN PLACE STAMPED  
"GILSON ENG"

NW COR OF SEC. 21,  
T5N, R2W, S1B&M (FOUND COUNTY MONUMENT) 4300 WEST STREET

2640.33' (BASIS OF BFARING) (ORIG. PLAT)  
2640.34' (MEAS.)

NO	Date	Revision	By	ck'd	App'd
1					
2					
3					
4					
5					

RECORD OF RE-SURVEY  
FOR LARRY KLEWER

CERTIFICATE OF RE-SURVEY

I, KRAIG KERSHAW, HEREBY CERTIFY THAT I AM A PROFESSIONAL LAND SURVEYOR IN THE STATE OF UTAH AND THAT THIS MAP, CONSISTING OF 1 SHEET(S), IS A TRUE AND COMPLETE REPRESENTATION OF A SURVEY MADE UNDER MY SUPERVISION IN (AUGUST 1999) AND THAT ALL THE MONUMENTS SHOWN HEREON ARE OF THE CHARACTER AND OCCUPY THE POSITIONS INDICATED AND ARE SUFFICIENT TO ENABLE THE SURVEY TO BE RETRACED.

PROFESSIONAL LAND SURVEYOR  
2-12-2000  
KRAIG KERSHAW  
STATE OF UTAH

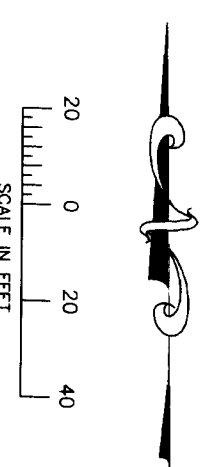
NARRATIVE

THE PURPOSE OF THIS RE-SURVEY WAS TO VERIFY PROPERTY CORNERS SET BY GLEN RAVENBERG IN 1997 FOR THE EASTERN SUBDIVISION. THE MONUMENTATION NOTED ON THE SUBDIVISION PLAT WAS USED AND THE RESULTS ARE SHOWN HEREON.

ORIGINAL BOUNDARY DESCRIPTION

A PART OF THE NORTHWEST QUARTER OF SECTION 21, T5N, R2W, S1B&M, US SURVEY, BEGINNING AT A POINT WHICH IS SOUTH 89°44'21" EAST 676.50 FT., ALONG THE QUARTER SECTION LINE FROM THE WEST QUARTER CORNER OF SAID SECTION 21, AND RUNNING THENCE NORTH 00°37'32" WEST 613.80 FT., THENCE SOUTH 89°44'21" EAST 150.00 FT., THENCE SOUTH 00°37'32" EAST 613.80 FT., TO THE QUARTER SECTION LINE, THENCE NORTH 89°44'21" WEST 150.00 FT., ALONG THE QUARTER SECTION LINE TO THE POINT OF BEGINNING.

CONTAINS: 2.114 ACRES



WEST 1/4 COR OF SEC. 21,  
T5N, R2W, S1B&M  
(FOUND COUNTY MONUMENT)

RECEIVED  
MAR 9 2000  
Webber County Survey

**Gilson Engineering**  
5440 S. 1700 W.  
Riverton, Utah  
(801) 775-1191

Drawn By: Cathy Handwerker  
Checked By: Kraig Kershaw  
Designed By: PLS  
Approved By: K. Scott Nelson, PE  
Date: February 2000  
File Number: 930.kli  
Drawing Number: record of survey