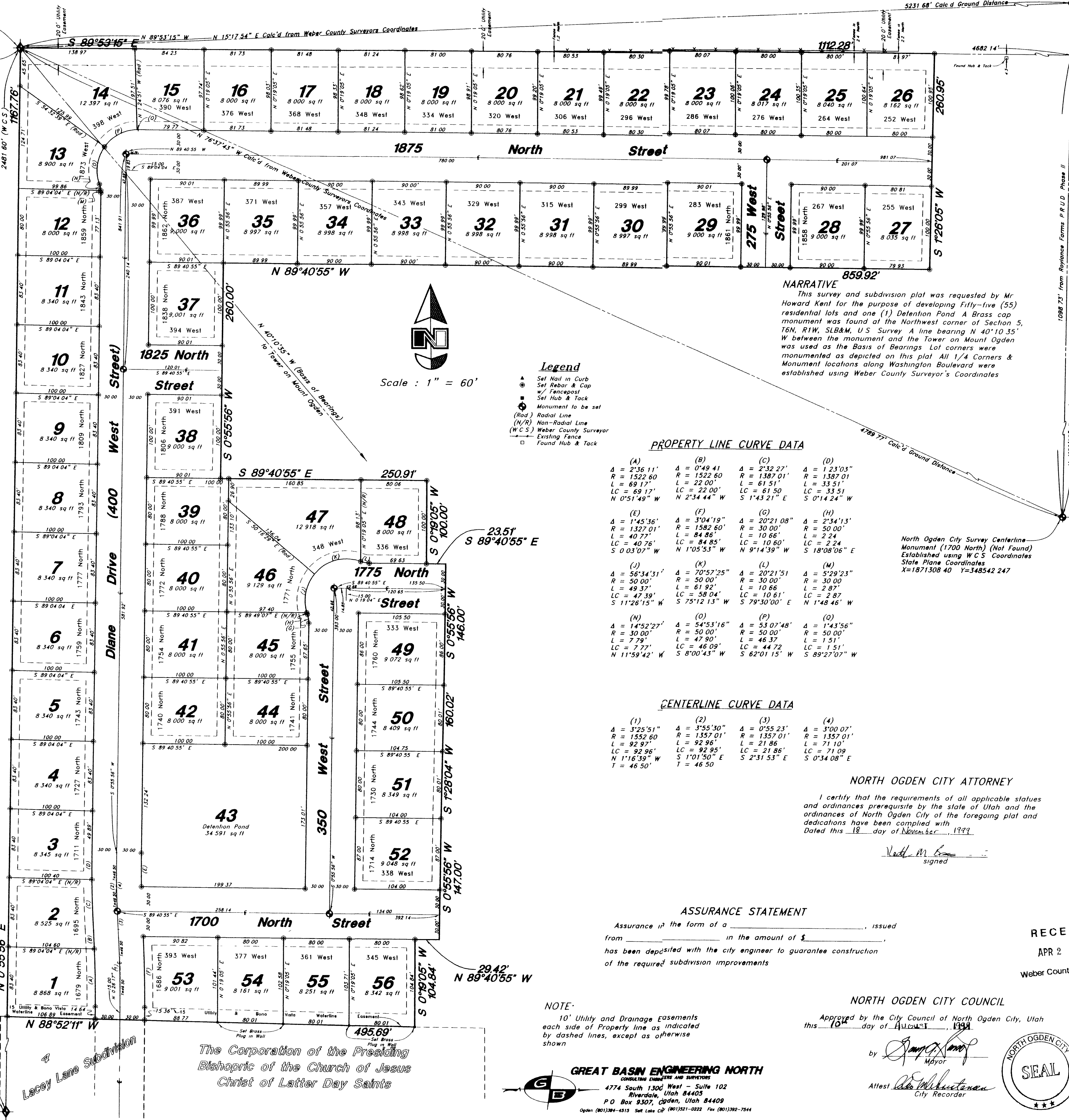


Northwest corner of Section 5, T6N, R1W, SLB&M, U.S. Survey - Found Brass Cap Monument (State Plane Coordinates) = 1866649.63 = 349649.66

North Ogden City Survey Centerline Monument (2600 North) (Not Found) Established using W.C.S. Coordinates State Plane Coordinates X=1871432.62 Y=354688.02

# Ben Lomond Estates No. 1

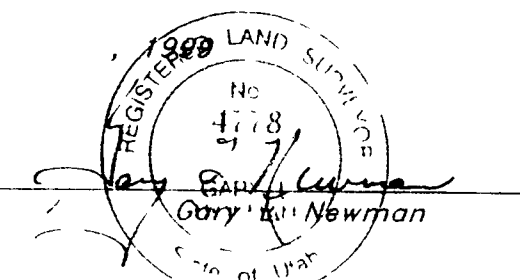
A part of the Northwest 1/4 of Section 5, T6N, R1W, SLB&M, U.S. Survey North Ogden City, Weber County, Utah



### SURVEYOR'S CERTIFICATE

I, Gary L. Newman, a Registered Land Surveyor in the State of Utah do hereby certify that this plat of Ben Lomond Estates No. 1 in North Ogden City, Weber County, Utah has been correctly drawn to the designated scale and is a true and correct representation of the following described lands included in said subdivision based on data compiled from records in the Weber County Recorder's Office and of a survey made on the ground.

Signed this 16<sup>th</sup> day of November  
1999  
4778  
License No.



### OWNER'S DEDICATION

Know all men by these presents that SLI Commercial Real Estate Co and SM Carter Co Utah Corporations, as owners have subdivided under the name of Ben Lomond Estates No. 1, a part of the Northwest Quarter of Section 5, Township 6 North Range 1 West, of the Salt Lake Base and Meridian, Weber County, Utah as shown platted hereon and hereby publishes this plat as and for the plat of said Ben Lomond Estates No. 1 and hereby declares that said plat sets forth the location and gives the dimensions of all lots, easements, tracts and streets constituting the same and that each lot, tract and street shall be known by the number, letter and name given each respectively, and that SLI Commercial Real Estate Co and SM Carter Co Utah Corporations, as owners hereby dedicate to the public for use as such the streets and hereby dedicate to North Ogden City the drainage easements and public utility easements as shown on said plat in witness whereof SLI Commercial Real Estate Co and SM Carter Co, Utah Corporation, as owners have hereunto caused their names to be signed and the same to be attested by the signature of Howard Kent - President, of SLI Commercial Real Estate Co A Utah Corporation and Scott M Carter - President, of SM Carter Co A Utah Corporation

SLI Commercial Real Estate Co A Utah Corporation  
by Howard Kent President Date  
SM Carter Co A Utah Corporation  
by Scott M Carter President Date



### ACKNOWLEDGMENT

State of Utah } ss  
County of }

On this, the 7<sup>th</sup> day of January, 2000, before me the above signed President of SLI Commercial Real Estate personally appeared Howard Kent who acknowledges that he executed the foregoing instrument for the purposes contained therein

Residing at Weber County by Stacey A Varrington Notary Public commissioned in Utah  
Commission Expires 6/19/2001 Stacey A Varrington Print Name

State of Utah } ss  
County of }

On this, the 7<sup>th</sup> day of January, 2000, before me the above signed President of SM Carter Company, A Utah Corporation personally appeared Scott M Carter who acknowledges that he executed the foregoing instrument for the purposes contained therein

Residing at Weber County by Stacey A Varrington Notary Public commissioned in Utah  
Commission Expires 6/18/2001 Stacey A Varrington Print Name

### BOUNDARY DESCRIPTION

A part of the Northwest quarter of Section 5, Township 6 North, Range 1 West, Salt Lake Base and Meridian, U.S. Survey Beginning at the Northwest corner of said Section, running thence South 89°53'15" East 112.28 feet, thence South 0°55'56" West 260.00 feet, thence North 89°40'55" West 859.92 feet, thence South 1°26'05" West 260.95 feet, thence South 89°40'55" East 250.91 feet, thence South 0°19'05" West 100.00 feet, thence South 89°40'55" East 23.51 feet, thence South 0°55'56" West 146.00 feet, thence South 1°28'04" West 160.02 feet, thence South 0°55'56" West 147.00 feet, thence North 89°40'55" West 29.42 feet, thence South 0°19'05" West 104.84 feet to the North line of the L.D.S. Church Parcel as staked on the ground and the North line extended of Lacey Lane Subdivision Harrisville City, Weber County, Utah, thence North 88°52'11" West 495.69 feet along said North line to the Section line thence North 0°55'56" East 1167.76 feet along said Section line to the point of beginning

Contains 15.856 Acres

RECEIVED  
APR 2 2000  
Weber County Survey

### NARRATIVE

This survey and subdivision plat was requested by Mr Howard Kent for the purpose of developing Fifty-five (55) residential lots and one (1) Detention Pond. A Brass cap monument was found at the Northwest corner of Section 5, T6N, R1W, SLB&M, U.S. Survey A line bearing N 40°10'35" W between the monument and the Tower on Mount Ogden was used as the Basis of Bearings. Lot corners were monumented as depicted on this plat. All 1/4 Corners & Monument locations along Washington Boulevard were established using Weber County Surveyor's Coordinates

### PROPERTY LINE CURVE DATA

(A)	(B)	(C)	(D)
A = 2°36'11"	A = 0°49'41"	A = 2°32'27"	A = 1°23'03"
R = 1522.60	R = 1387.01	R = 1387.01	R = 1387.01
L = 69.17'	L = 22.00'	L = 61.50'	L = 33.51'
LC = 69.17'	LC = 22.00'	LC = 61.50'	LC = 33.51'
N 0°51'49" W	N 2°34'44" W	S 1°43'21" E	S 0°14'24" W

(E)	(F)	(G)	(H)
A = 1°45'36"	A = 3°04'19"	A = 20°21'08"	A = 2°34'13"
R = 1327.01'	R = 1582.60'	R = 30.00'	R = 50.00'
L = 49.37'	L = 84.86'	L = 10.66'	L = 2.24'
LC = 49.37'	LC = 84.85'	LC = 10.66'	LC = 2.24'
S 0°03'07" W	N 1°05'53" W	N 9°14'39" W	S 18°08'06" E

(I)	(J)	(K)	(L)
A = 56°34'31"	A = 70°57'25"	A = 20°21'51"	A = 5°29'23"
R = 50.00'	R = 50.00'	R = 30.00'	R = 30.00'
L = 49.37'	L = 61.92'	L = 10.66'	L = 2.87'
LC = 47.39'	LC = 58.04'	LC = 10.61'	LC = 2.87'
S 11°26'15" W	S 75°12'13" W	S 79°30'00" E	N 1°48'46" W

(M)	(N)	(O)	(P)
A = 1°45'27"	A = 54°53'16"	A = 53°07'48"	A = 1°43'56"
R = 30.00'	R = 50.00'	R = 50.00'	R = 50.00'
L = 7.79'	L = 47.90'	L = 46.37'	L = 1.51'
LC = 7.79'	LC = 46.09'	LC = 44.72'	LC = 1.51'
N 11°59'42" W	S 8°00'43" W	S 62°01'15" W	S 89°27'07" W

### CENTERLINE CURVE DATA

(1)	(2)	(3)	(4)
A = 3°25'51"	A = 3°55'30"	A = 0°55'23"	A = 3°00'07"
R = 1552.60	R = 1357.01'	R = 1357.01'	R = 1357.01'
L = 92.97'	L = 92.96'	L = 21.86'	L = 71.10'
LC = 92.96'	LC = 92.95'	LC = 21.86'	LC = 71.09'
N 1°16'39" W	S 1°01'50" E	S 2°31'53" E	S 0°34'08" E
T = 46.50'	T = 46.50'		

### ASSURANCE STATEMENT

Assurance in the form of a \_\_\_\_\_ issued from \_\_\_\_\_ in the amount of \$ \_\_\_\_\_ has been deposited with the city engineer to guarantee construction of the required subdivision improvements

### NOTE

10' Utility and Drainage easements each side of Property line as indicated by dashed lines, except as otherwise shown

### THE CORPORATION OF THE PRESIDING BISHOPRIC OF THE CHURCH OF JESUS CHRIST OF LATTER DAY SAINTS

1/4 corner of Section 5, R1W, SLB&M, U.S. Survey (Found) State Plane Coordinates = 1866609.27 = 17169.01

### NORTH OGDEN CITY ATTORNEY

I certify that the requirements of all applicable statutes and ordinances prerequisite by the state of Utah and the ordinances of North Ogden City of the foregoing plat and the dedications have been complied with  
Dated this 18<sup>th</sup> day of November, 1999

Walter M. Kent  
signed

### NORTH OGDEN CITY COUNCIL

Approved by the City Council of North Ogden City, Utah this 16<sup>th</sup> day of November, 1999

by James L. Jones Mayor  
Attest Debra M. Christensen City Recorder



### NORTH OGDEN CITY APPROVALS

This plat was approved by the city engineer and the community development director

by Kent L. Jones 11/18/99  
City Engineer Date

by Scott M. Carter 18 Nov 1999  
Community Development Director Date

### WEBER COUNTY RECORDER

ENTRY NO. 1168851 FEE PAID \$ 84.00  
RECORDED 11 JAN 00 AT 4 OF OFFICIAL RECORDS PAGE 21 RECORDED FOR SLI COMMERCIAL REAL ESTATE  
DEBRA CHRISTENSEN  
WEBER COUNTY RECORDER  
BY Carrie Williams DEPUTY