



Scale 1" = 60'

- Set Nail & Washer
- Set Rebar & Cap
- ⊕ w/ Fencopast
- ⊕ Set Scribe in Conc
- ⊕ Monument to be set
- (Rad.) Radial line
- (N/R) Non-Radial line

Cross Pointe Shopping Center Phase III - Lot 9

A Utah Commercial Subdivision

A part of the Northwest 1/4 of Section 22, T5N, R1W, SLB&M, U.S. Survey
 South Ogden City, Weber County, Utah

NARRATIVE
 This survey and subdivision plat was requested by Mr W Richards Woodbury for the purpose of platting one (1) commercial lot Brass Cap Monuments were found at the North 1/4 corner and the Center of Section 22, T5N, R1W, SLB&M, U.S. Survey A line bearing N 0°36'34" E between these two monuments was used as the basis of bearings Lot corners were monumented as depicted on this plat

SOUTH OGDEN CITY APPROVAL
 This is to certify that this plat and dedication of this plat along with the dedication of all streets, easements and Public Improvement Guarantee were duly approved and accepted by the City Council of South Ogden City Utah this day of 1999

SOUTH OGDEN CITY PLANNING COMMISSION
 Approved by the South Ogden City Planning Commission on the day of 1999

James Spencer
 Chair

SOUTH OGDEN CITY ATTORNEY
 I have examined the foregoing plat description of Cross Pointe Shopping Center Phase II - Lot 9, A Utah Commercial Subdivision and in my opinion it conforms with the City Ordinances applicable thereto and now in and force and effect
 Signed this 26 day of Oct 1999

City Attorney

SOUTH OGDEN CITY ENGINEER
 I hereby certify that the requirements of all applicable statutes and ordinances prerequisite to City Engineer approval of the foregoing plat and dedication have been complied with
 Signed this 26th day of October 1999

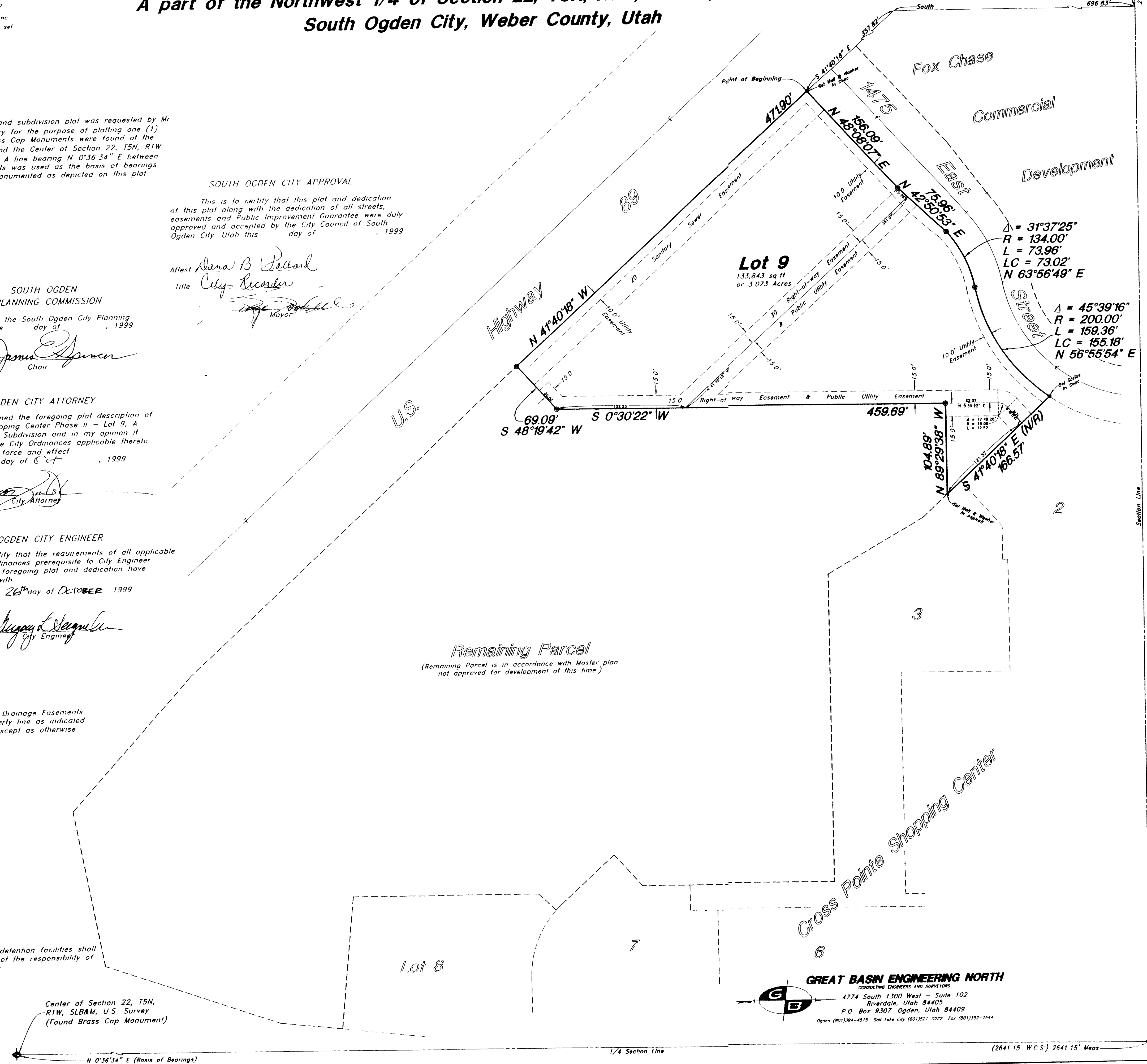
City Engineer

NOTE
 10' Utility and Damage Easements
 each side of property line as indicated
 dashed lines except as otherwise shown

NOTE
 Storm drain detention facilities shall be private and not the responsibility of South Ogden City

Center of Section 22, T5N, R1W, SLB&M, U.S. Survey
 (Found Brass Cap Monument)

GREAT BASIN ENGINEERING NORTH
 CONSULTING ENGINEERS AND SURVEYORS
 4774 South 1300 West - Suite 102
 Riverton, Utah 84405
 P.O. Box 9307 Ogden, Utah 84409
 Open (801)394-4515 Salt Lake City (801)521-0222 Fax (801)392-7544



I, Gary L. Newman, a Registered Professional Land Surveyor in the State of Utah, do hereby certify that this plat of Cross Pointe Shopping Center Phase III - Lot 9, A Utah Commercial Subdivision in Weber County, Utah has been correctly drawn to the designated scale and is a true and correct representation of the following description of lands included in said subdivision, based on the data compiled from records in the Weber County Recorder's Office, and of a survey made on the ground
 Signed this 5th day of October 1999

4778
 License No. OWNER'S DEDICATION
 State of Utah

We, the undersigned owners of the hereon described tract of land, do hereby set apart and subdivide the same into lots and streets as shown on this plat, and name said tract Cross Pointe Shopping Center Phase III - Lot 9, A Utah Commercial Subdivision, and hereby dedicate, grant and convey to South Ogden City, Weber County, Utah all those parts or portions of said tract of land designated as streets, the same to be used as public thoroughfares forever and also dedicate to South Ogden City those certain strips as easements for public utility and drainage purposes as shown hereon, the same to be used for the installation, maintenance, and operation of public utility service lines and drainage, as may be authorized by South Ogden City
 Signed this 12th day of October 1999

Cross Pointe Associates Limited, A Utah limited Partnership,
 by Woodbury Amsource Inc., its General Partner

W Richards Woodbury
 W Richards Woodbury - Chairman
Gregory W Glissmeyer
 Gregory W Glissmeyer - Vice-president

ACKNOWLEDGMENT
 State of Utah } ss
 County of }
 On the 12th day of October, 1999, personally appeared before me, W Richards Woodbury & Gregory W Glissmeyer who being by me duly sworn did say that they are Chairman & Vice-president of Cross Pointe Associates Limited, A Utah limited Partnership, by Woodbury Amsource Inc., its General Partner, and that said instrument was signed in behalf of said corporation by a resolution of its board of directors and W Richards Woodbury and Gregory W Glissmeyer acknowledged to me that said corporation executed the same

NOTARY PUBLIC
 STATE OF UTAH
 My Commission Expires June 5, 2002
 JOSEPH D RICH
 3877 East Drive
 SALT LAKE CITY, UTAH

Joseph D Rich
 Joseph D Rich
 Notary Public commissioned in Utah

BOUNDARY DESCRIPTION
 A part of the Northwest Quarter of Section 22, Township 5 North, Range 1 West, Salt Lake Base and Meridian, U.S. Survey
 Beginning of a point on the Northeastly right-of-way line of U.S. Highway 89, which is 1203.81 feet South 89°08'56" East along the Section line, 696.83 feet South to said right-of-way line, 357.82 feet South 41°40'18" East along said Northeastly right-of-way line to the intersection of said Northeastly right-of-way line and the Southeastly right-of-way line of 1475 East Street from the Northwest corner of said Section, running thence four (4) courses along said Southeastly right-of-way line as follows North 48°08'07" East 156.09 feet, North 42°50'53" East 75.96 feet, Northeastly along the arc of a 134.00 foot radius curve to the right a distance of 73.96 feet (Long Chord bears North 63°56'49" East 73.02 feet) and Northeastly along the arc of a 200.00 foot radius curve to the left a distance of 159.36 feet (Long Chord bears North 56°55'54" East 155.18 feet) to the most Westerly corner of Lot 2 Cross Pointe Shopping Center a Utah Commercial Subdivision, South Ogden City, Weber County, Utah, thence South 41°40'18" East 166.57 feet along the Westerly line of said Lot 2, and the Westerly line of Lot 3 of said Cross Pointe Shopping Center, thence North 89°29'38" West 104.89 feet, thence South 0°30'22" West 459.69 feet, thence South 48°19'42" West 69.09 feet to the Northeastly right-of-way line of said U.S. Highway 89, thence North 41°40'18" West 471.90 feet along said right-of-way to the point of beginning
 Contains 3.073 Acres

SOUTH OGDEN PUBLIC WORKS DIRECTOR
 I have examined the foregoing plat of Cross Pointe Shopping Center Phase III - Lot 9 A Utah Commercial Subdivision as it pertains to the improvement standards and ordinances now in force and in my opinion it complies with such development requirements
 Signed this 25 day of Oct 1999

Bruce J. Miller
 Bruce J. Miller
 Public Works Director

North 1/4 corner of Section 22, T5N, R1W, SLB&M, U.S. Survey
 (Found Brass Cap Monument)

WEBER COUNTY RECORDER
 ENTRY NO. 11618629
 30.00 FILED FOR RECORD AND
 RECORDED 09 DEC 99
 10:55AM IN BOOK 51 OF OFFICIAL RECORDS PAGE 15 RECORDED FOR MOUNTAIN VIEW TITLE
DOUG CROFTS
 WEBER COUNTY RECORDER
 DEPUTY
Karla Raamasaen

RECEIVED
 APR 2 2000
 Weber County Recorder
 002481