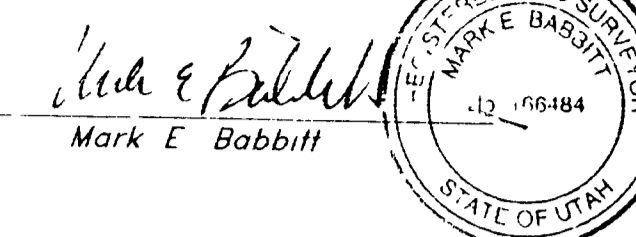


I, Mark E. Babbitt, a Registered Professional Land Surveyor in the State of Utah, do hereby certify that this plat of Legacy Park in Ogden City, Weber County, Utah has been correctly drawn to the designated scale and is a true and correct representation of the following described lands included in said subdivision based on data compiled from records in the Weber County Recorder's Office and of a survey made on the ground

Signed this 23rd day of November, 1999

166484 License No



OWNER'S DEDICATION

I, the undersigned owner of the hereon described tract of land, hereby set apart and subdivide the same into lots and streets as shown on this plat, and name said Legacy Park and hereby dedicate, grant and convey to Ogden City, Weber County, Utah, all those parts or portions of said tract of land designated as streets, the same to be used as public thoroughfares forever, and also dedicate to Ogden City those certain strips as easements for public utility and drainage purposes as shown hereon, the same to be used for the installation, maintenance and operation of public utility service lines and drainage as may be authorized by Ogden City

Signed this 23rd day of November, 1999

OGDEN CITY REDEVELOPMENT AGENCY, formerly known as THE OGDEN NEIGHBORHOOD DEVELOPMENT AGENCY, formerly known as OGDEN CITY NEIGHBORHOOD DEVELOPMENT AGENCY

By Glenn J. Meacham - Chief Executive Officer

ACKNOWLEDGMENT

State of Utah } ss
County of }

On the 23rd day of November, 1999, personally appeared before me, Glenn J. Meacham who being by me duly sworn did say that he is Chief Executive Officer of Ogden City Redevelopment Agency, and that said instrument was signed in behalf of said Corporation by a resolution of its Board of Directors and Glenn J. Meacham acknowledged to me that said Corporation executed the same

Residing at Ogden, Utah Jannette Berklund
A Notary Public Commissioned in Utah
Commission Expires 03/26/03 Jannette Berklund
Print Name

BOUNDARY DESCRIPTION

A part of Lots 2,4,7,8 and all of Lots 3, and 9, Block 10 Plat 'B', Ogden City Survey and part of the Southwest Quarter of Section 28 Township 6 North, Range 1 West, Salt Lake Base and Meridian U.S. Survey
Beginning at the Northeast corner of Lot 9, Block 10, Plat B, Ogden City Survey running thence South 0°58'00" West 425.00 feet, thence North 89°29'39" West 0.69 feet, thence South 0°30'21" West 12.12 feet, thence South 89°29'39" East 0.60 feet, thence South 0°58'00" West 5.12 feet, thence North 89°02'00" West 67.21 feet, thence South 0°58'00" West 221.12 feet to the North right-of-way line of Twenty-fourth Street, thence North 89°02'00" West 201.62 feet along said North right-of-way line, thence North 0°58'00" East 165.84 feet, thence North 89°02'00" West 67.21 feet, thence North 0°58'00" East 173.23 feet, thence South 89°02'00" East 100.81 feet, thence North 0°58'00" East 103.18 feet, thence South 89°02'00" East 67.21 feet, thence North 0°58'00" East 185.94 feet to the South right-of-way line of Twenty-third Street, thence South 89°02'00" East 201.62 feet along said South right-of-way line to the point of beginning

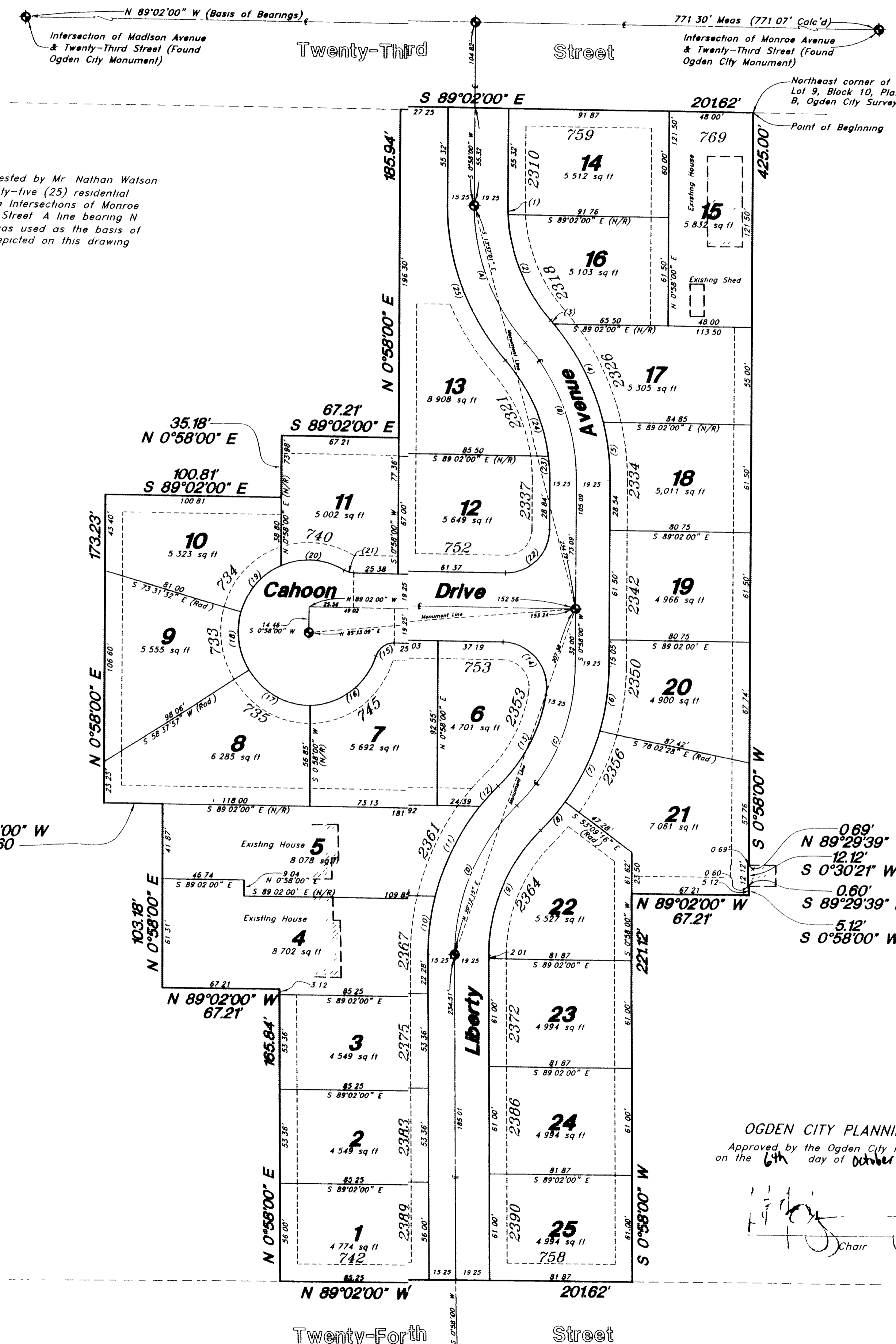
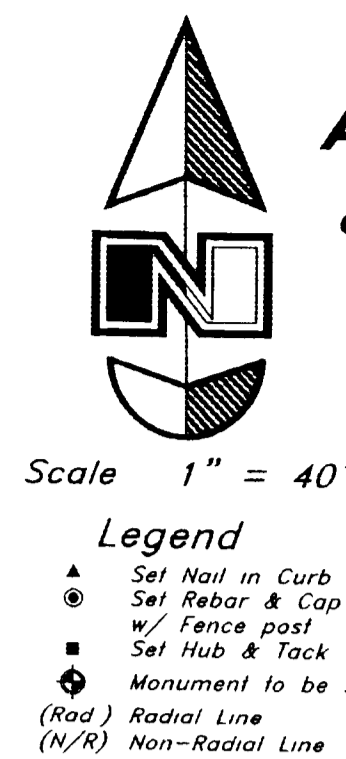
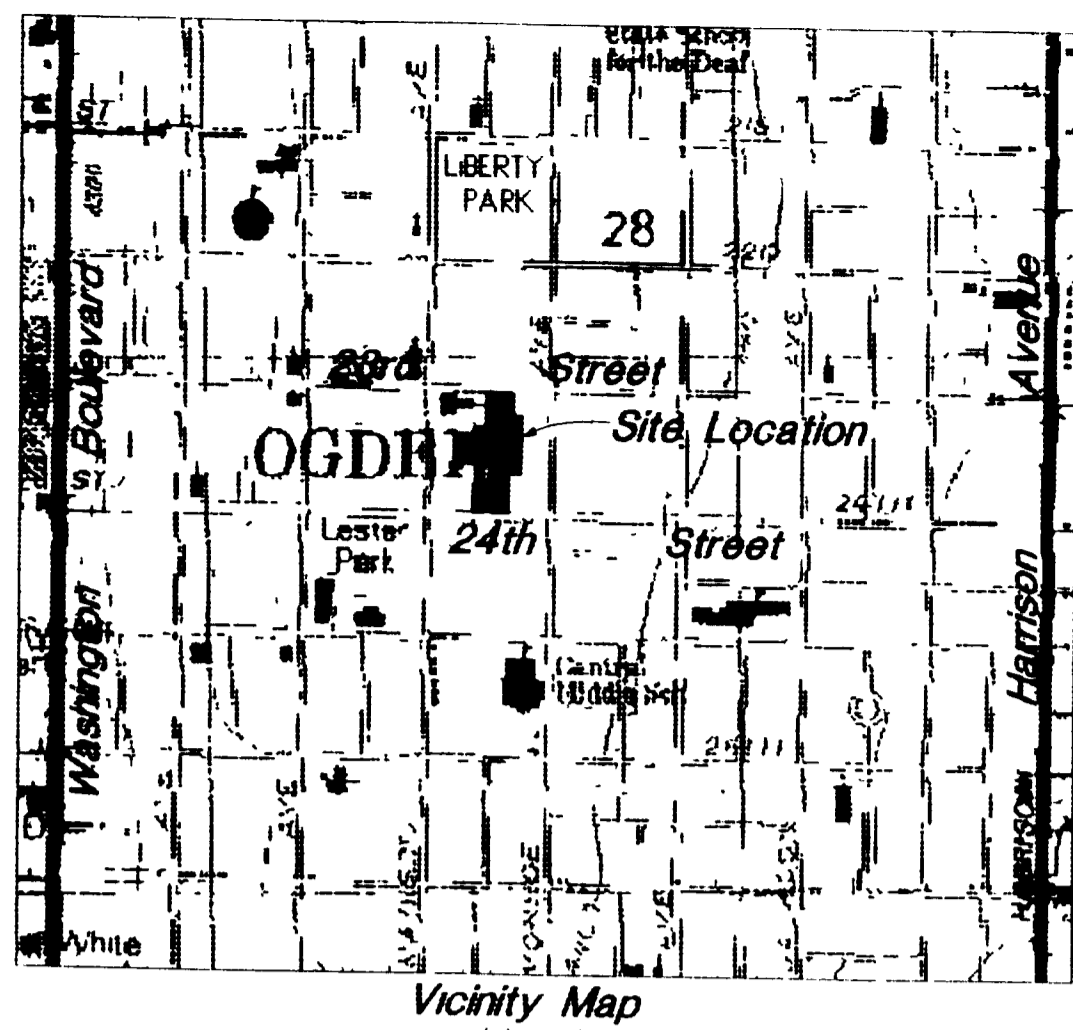
Contains 4.026 Acres

OGDEN CITY PLANNING COMMISSION
Approved by the Ogden City Planning Commission on the 6th day of October, 1999

Chair

Legacy Park

A part Lots 2,4,7,8 and All of Lots 3, & 9 of Block 10, Plat B, Ogden City Survey, also a part of the Southeast 1/4 of Section 28, T6N, R1W, SLB&M, U.S. Survey Ogden City, Weber County, Utah



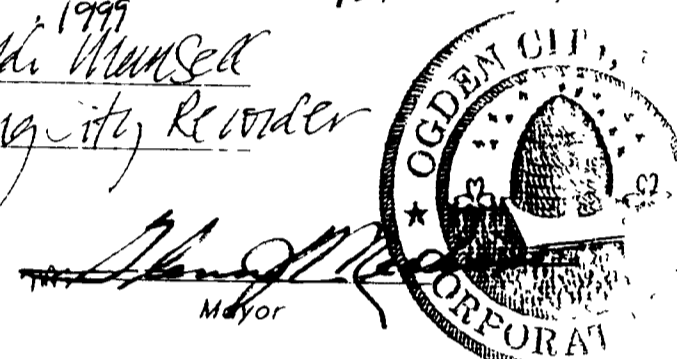
NARRATIVE

This survey & subdivision plat were requested by Mr. Nathan Watson of Kier Corporation in order to subdivide twenty-five (25) residential lots. Ogden City Monuments were found at the Intersections of Monroe Avenue & 23rd Street and Madison and 23rd Street. A line bearing N 89°02'00" W between these two monuments was used as the basis of bearings. Lot corners were monumented as depicted on this drawing.

OGDEN CITY APPROVAL

This is to certify that this plat and dedication of this plat were duly approved and accepted by the Mayor of Ogden City, Utah this 21st day of October, 1999.

Attest: *Mark Hunsicker*
Title: Acting City Recorder



OGDEN CITY ENGINEER

hereby certify that I have carefully investigated lines of Survey of the foregoing plat and legal caption of the land embraced therein and find it to be correct and to agree with the lines and monuments on record in this office.

Signed this 23rd day of November, 1999

John Barber
Signature

OGDEN CITY PUBLIC WORKS DIRECTOR

I hereby certify that the requirements of all applicable statutes and ordinances prerequisite to approval by the Mayor of Ogden City of the foregoing plat and dedication have been complied with.

Signed this 24th day of November, 1999

[Signature]
Signature

PROPERTY LINE CURVE DATA

Table with 5 columns of curve data. Each column contains values for Delta (Δ), Radius (R), Length (L), and Chord Length (LC) for curves 1 through 25.

CENTERLINE CURVE DATA

Table with 4 columns of centerline curve data. Each column contains values for Delta (Δ), Radius (R), Length (L), and Chord Length (LC) for curves (A) through (D).

Utility and Drainage Easements side of property line as indicated shed lines, except as otherwise shown

RECEIVED

APR 2000

Weber County Surveyor

WEBER COUNTY RECORDER
ENTRY NO. 11175746
\$68.00 FEE PAID
RECORDED 24 NOV 99
12:58 PM IN BOOK 51 OF OFFICIAL RECORDS PAGE 115 ASSOCIATED TITLE
DAVE CRUITS
WEBER COUNTY RECORDER
BY: *Carrie Warner*
DEPUTY