

Amended Plat of Lots 15 and 16 Pinebrook Subdivision No. 2 Riverdale City, Weber County, Utah

SURVEYOR'S CERTIFICATE

I, Gary L. Newman, a Registered Professional Land Surveyor in the State of Utah, do hereby certify that this amended plat of lots 15 and 16, Pinebrook Subdivision No. 2, Riverdale City, Weber County, Utah, has been correctly drawn to the description of lands included in said subdivision, based on data compiled from ground measurements made on the ground, and of a survey made on the ground.

Signed this 15th day of July, 1998, at Salt Lake City, Utah.
GARY L. NEWMAN
Professional Land Surveyor
No. 42728

OWNER'S DEDICATION

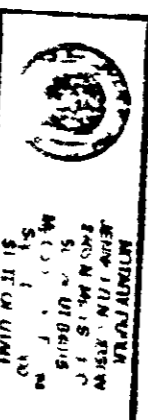
We, the undersigned owners of the herein described tract of land, hereby set apart and dedicate to the public the easement shown on this plat, and name said tract Amended Plat of Lots 15 and 16, Pinebrook Subdivision No. 2, Riverdale City, Weber County, Utah. We, the owners, do hereby dedicate to the public the easement shown on this plat, and name said tract Amended Plat of Lots 15 and 16, Pinebrook Subdivision No. 2, Riverdale City, Weber County, Utah. We, the owners, do hereby dedicate to the public the easement shown on this plat, and name said tract Amended Plat of Lots 15 and 16, Pinebrook Subdivision No. 2, Riverdale City, Weber County, Utah. We, the owners, do hereby dedicate to the public the easement shown on this plat, and name said tract Amended Plat of Lots 15 and 16, Pinebrook Subdivision No. 2, Riverdale City, Weber County, Utah.

Signed this 15th day of July, 1998.
Dan R. Farr
& W. L. Farr
Lynn G. Farr

ACKNOWLEDGMENT

On the 15th day of July, 1998, personally appeared before me, the undersigned, a Notary Public, duly commissioned in the State of Utah, in number, who duly acknowledged to me they signed the foregoing and voluntarily and for the purposes herein mentioned.

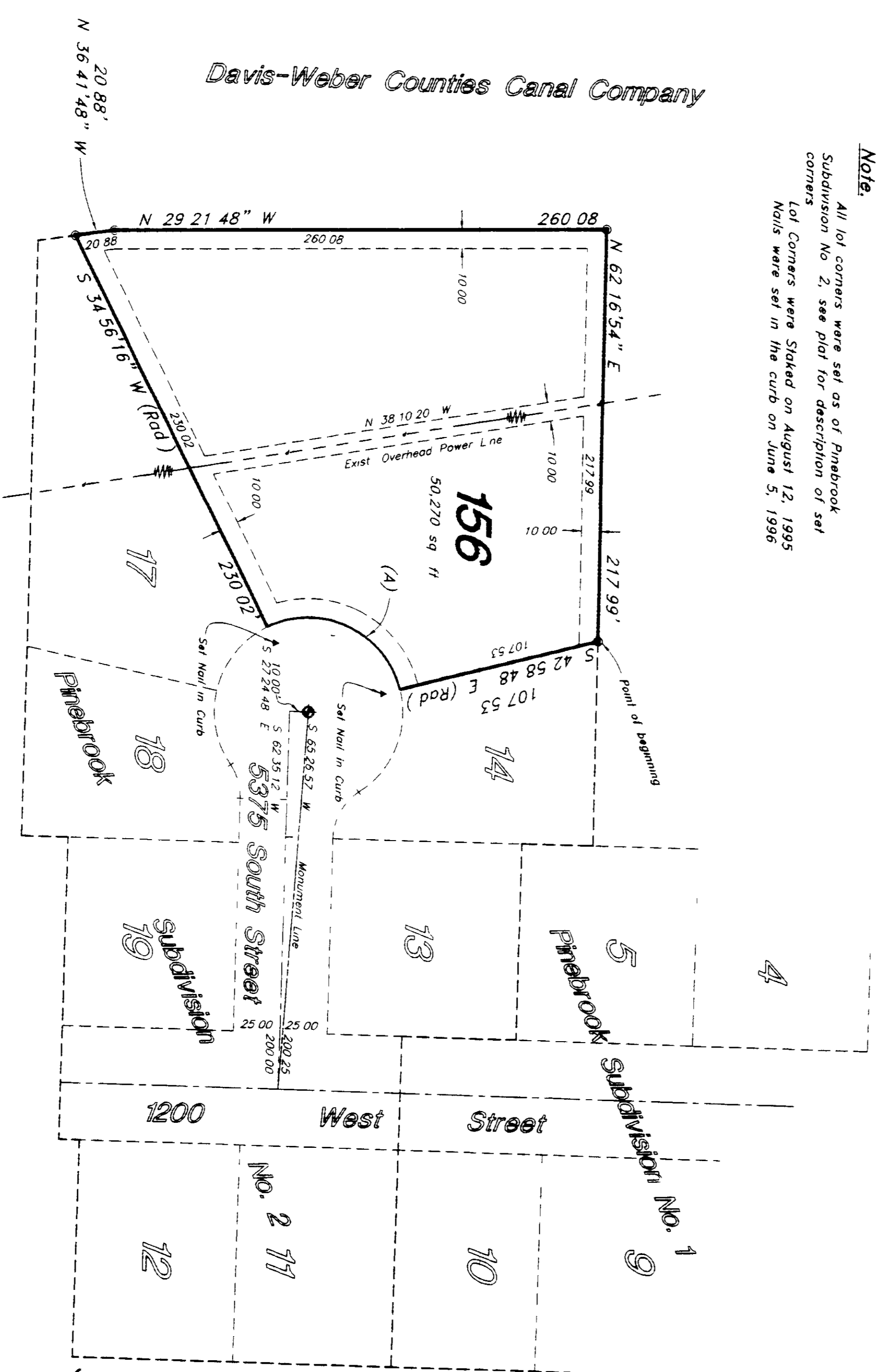
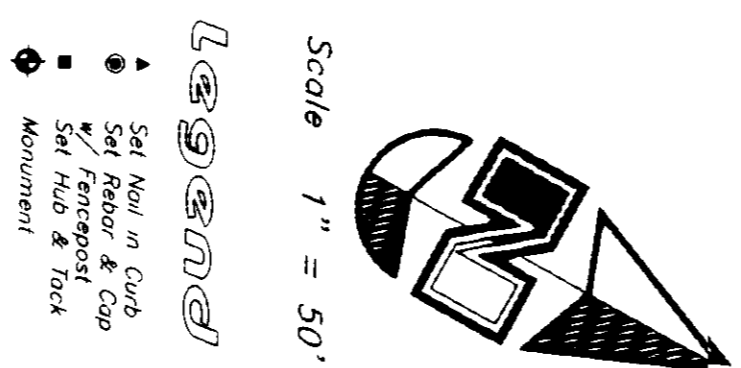
Residing at _____, a Notary Public, commissioned in Utah.



BOUNDARY DESCRIPTION

2 West 1/4 of the Southeast Quarter of Section 13 Township 5 North, Range 2 West, Bingham Plateau and Meridian, U.S. Survey, 14 Pinebrook Subdivision No. 2, Riverdale City, Weber County, Utah, containing hereon Lot 14 to the North, East 107.23 feet along the Westery line of said Lot 14 to the North, East 50.00 foot radius curve to South Street, thence South along the arc of a South 4201.18' East 77.76 feet to the corner of 89.08 feet (Long Chord bears South 4201.18' East 77.76 feet) to the corner of 250.02 feet along the Westery line of the subdivision, thence South 34.5616' West 250.02 feet along the Westery line of the subdivision, thence North 29.2148' West 20.88 feet, North 29.2148' West 20.88 feet, North 29.2148' West 20.88 feet to the point of beginning 217.99 feet to the point of beginning.

Contains 50,270 Square Feet



Curve Data
(A)
R = 10294.56'
L = 50.20'
LC = 89.08'
SC = 77.76'
LC = 401.18' E

Note
All lot corners were set as of Pinebrook Subdivision No. 2, see plat for description of said corners. Lot corners were staked on August 12, 1995. Lot 15 was set in the curb on June 5, 1998.

NOTICE
This survey and subdivision plat were requested by the Davis-Weber Counties Canal Company, a corporation organized under the laws of the State of Utah, for lots 15 & 16 of Pinebrook Subdivision No. 2, Riverdale City, Weber County, Utah. The original plat was established with the amended plat. Lot corners were set as depicted.

NOTE
10' Utility and Drainage Easements and other utility lines as indicated by dashed lines, except as otherwise shown.

GREAT BASIN ENGINEERING NORTH
Professional Engineers and Surveyors
5541 S. 2400 E., Suite 200, Salt Lake City, Utah 84143
Phone: (801) 488-4411 Fax: (801) 488-4411

RIVERDALE CITY ENGINEER
I, Robert Curtis Hill, have carefully investigated the lines of Survey of the land embraced therein, and find them to be correct and to agree with the lines and monuments on record in this office.
Signed this 18th day of December, 1998.
Robert Curtis Hill
City Engineer

RIVERDALE CITY PLANNING COMMISSION
Approved by the Riverdale City Planning Commission on the 6th day of January, 1998.
City

RIVERDALE CITY APPROVAL
This is to certify that this plat and dedication of this plat were duly approved and accepted by the Council of Riverdale City, Utah, this 6th day of January, 1998.
Mayor
City Clerk

WEBER COUNTY RECORDER	RECORDED
FILE NO. 141670	FILE NO. 141670
RECORDED 21 JAN 28 1998	RECORDED 21 JAN 28 1998
BY: [Signature]	BY: [Signature]