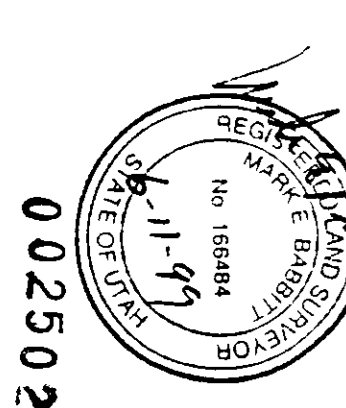
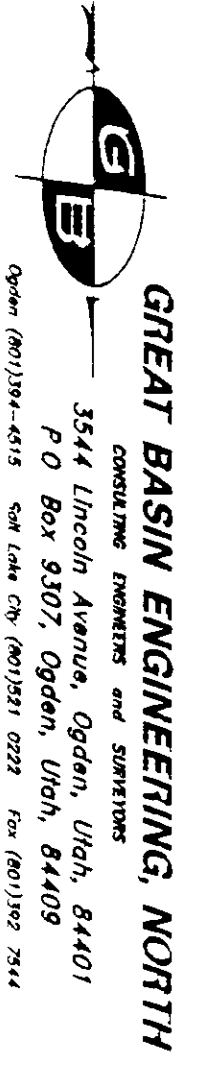
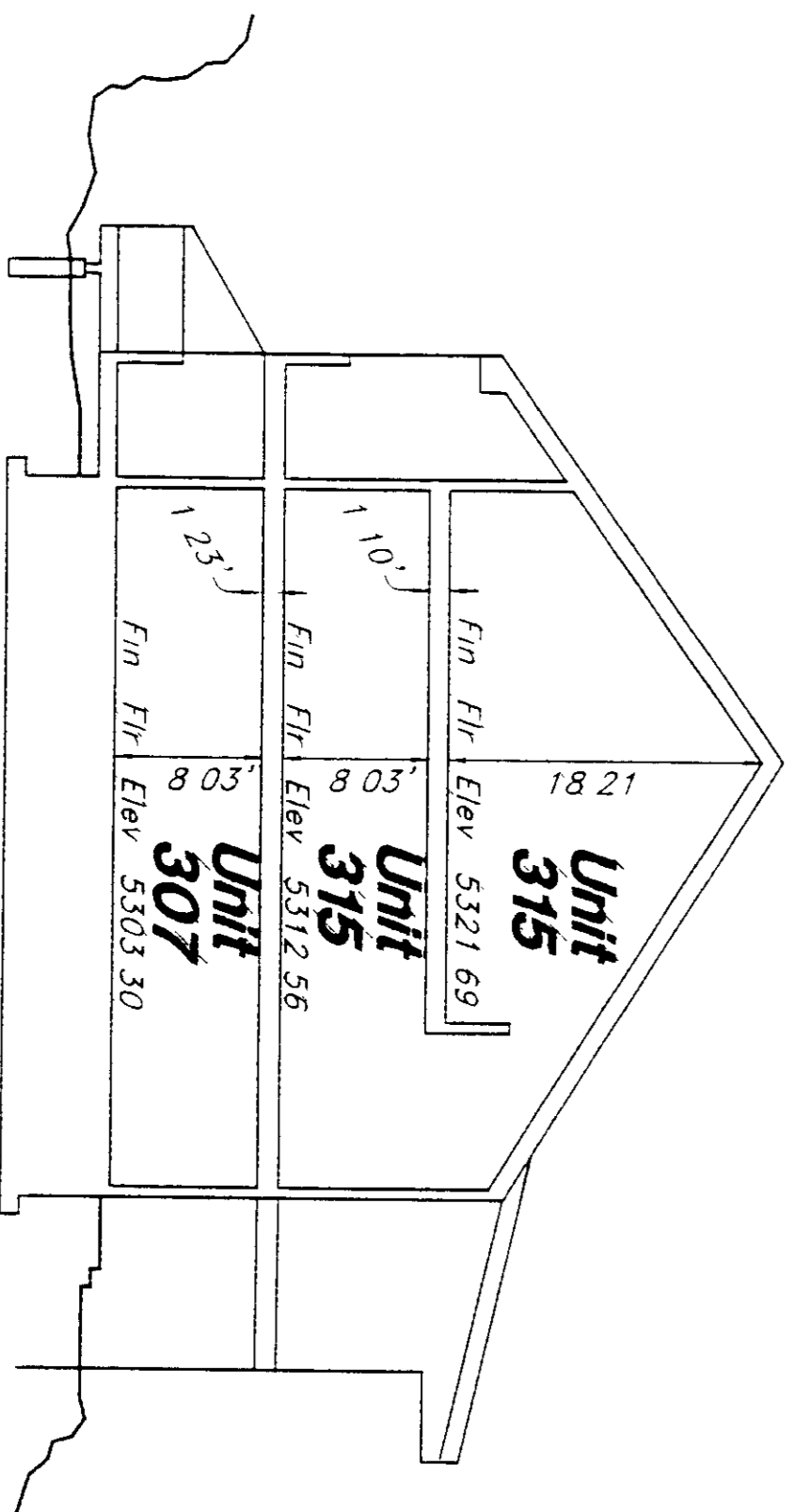
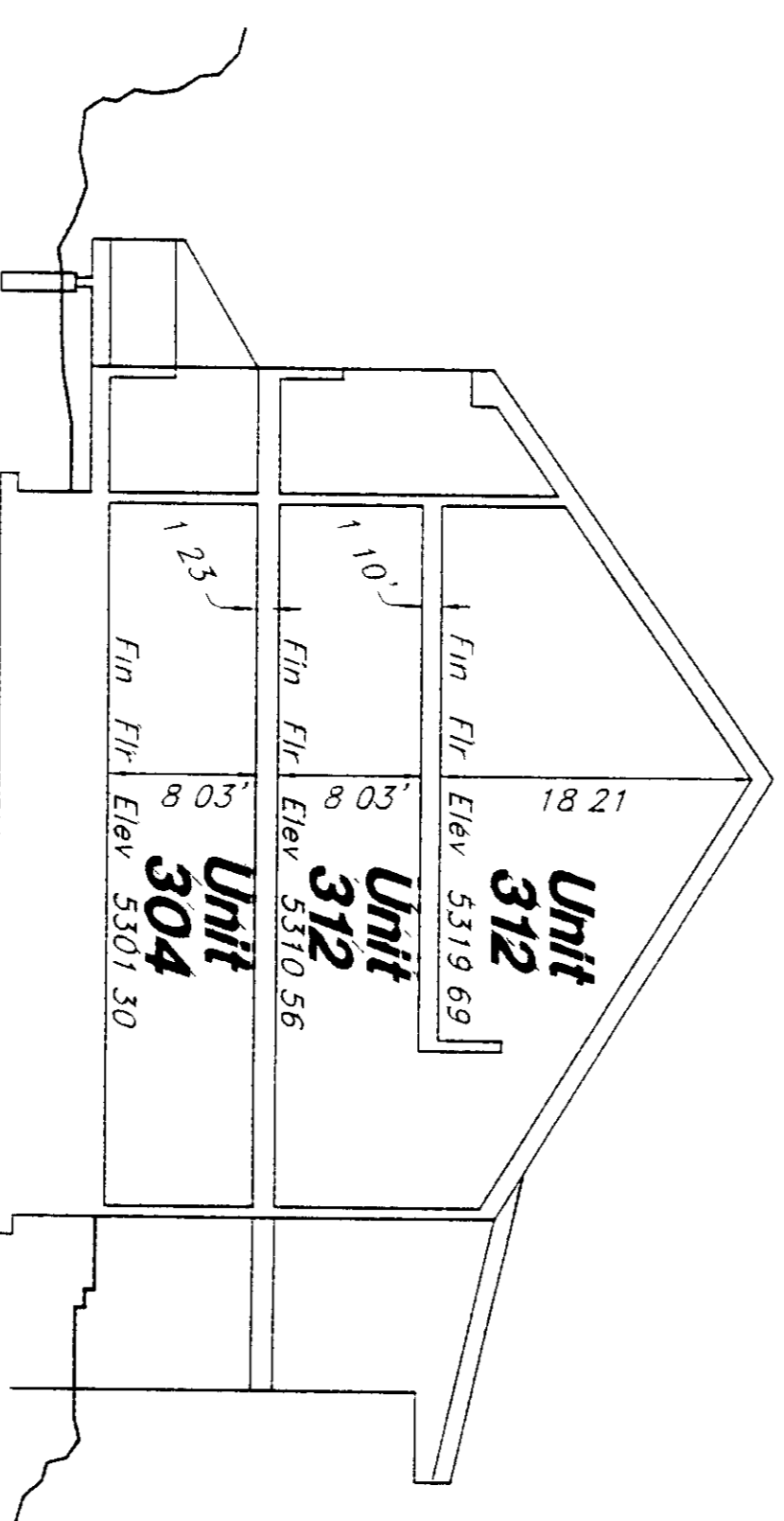
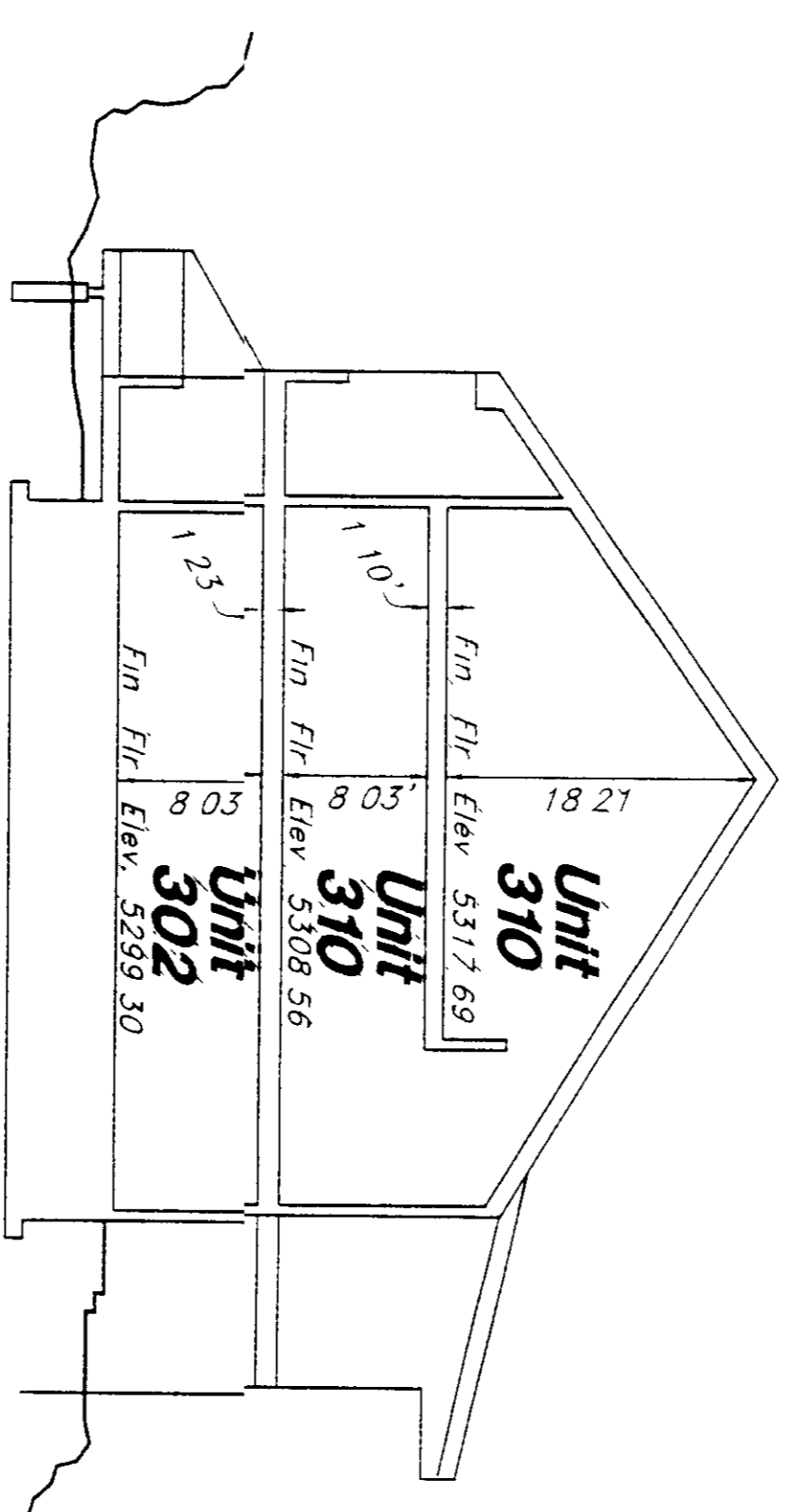
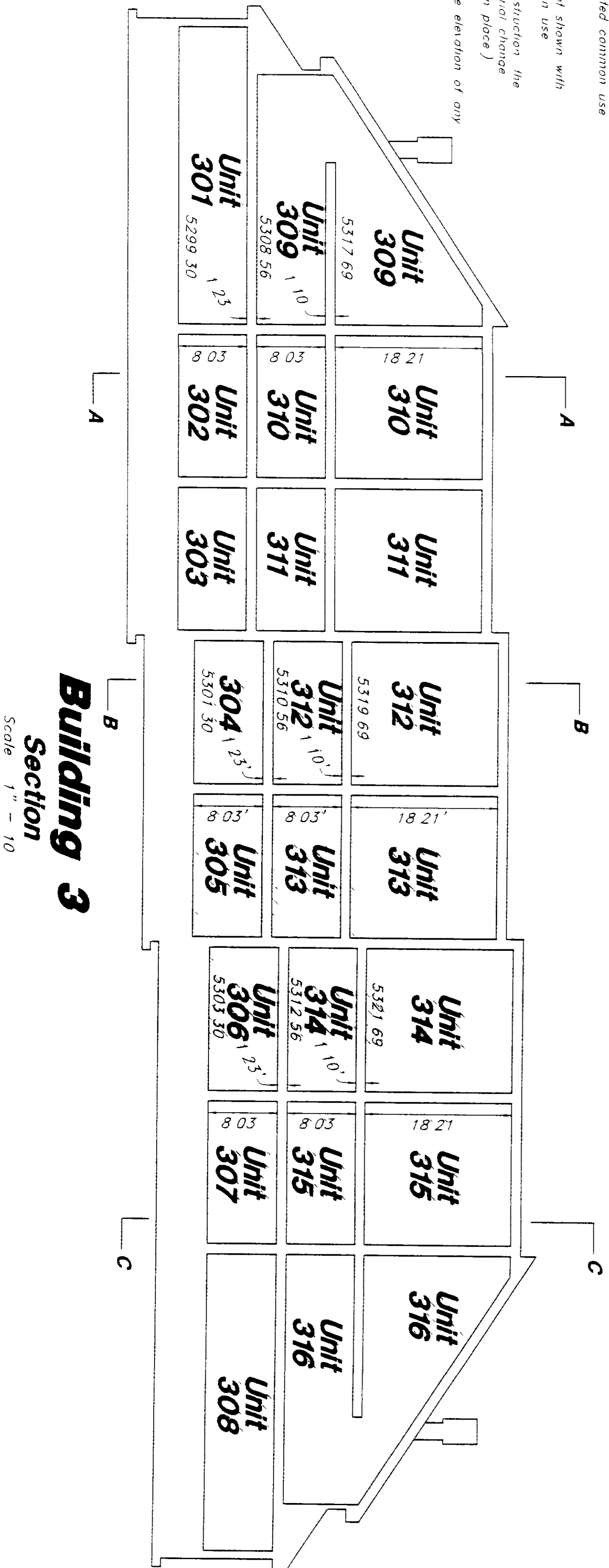
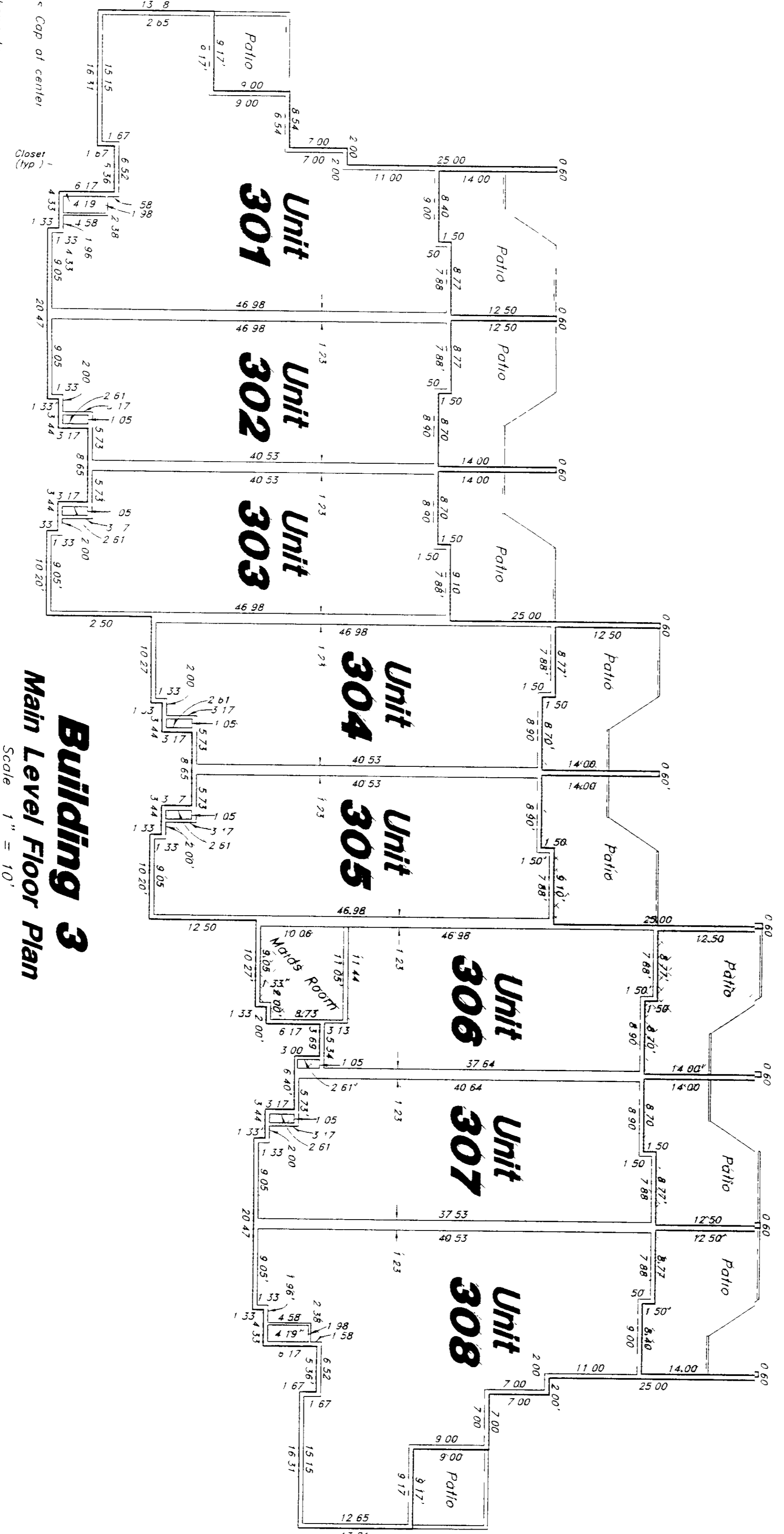


Record of Survey Map
WORLD MARK, THE CLUB AT
WOLF CREEK VILLAGE PHASE I
 A Condominium Project
 A part of the South 1/2 of Section 22, 77N, R1E, S1B&M, U.S. Survey
 Weber County, Utah

- Notes
- 1 Elevations are based on USGS datum Benneville, of Section 22, 77N, R1E, S1B&M = Elev. 5322.99
 - 2 Each condominium unit contained within the project is shown by a diagonal stripe and is designated by a unit number.
 - 3 Storage areas, patios, and balconies or decks contained within the project are shown by cross hatched lines and are limited common use areas.
 - 4 All other areas contained within the project but not shown with diagonal stripes are reserved for future construction use.
 - 5 This building is not completed. Upon completion of construction, the final location of improvements (foundation is in place) and the elevation of all structures shall be greater than the elevation of any adjacent flood plain.

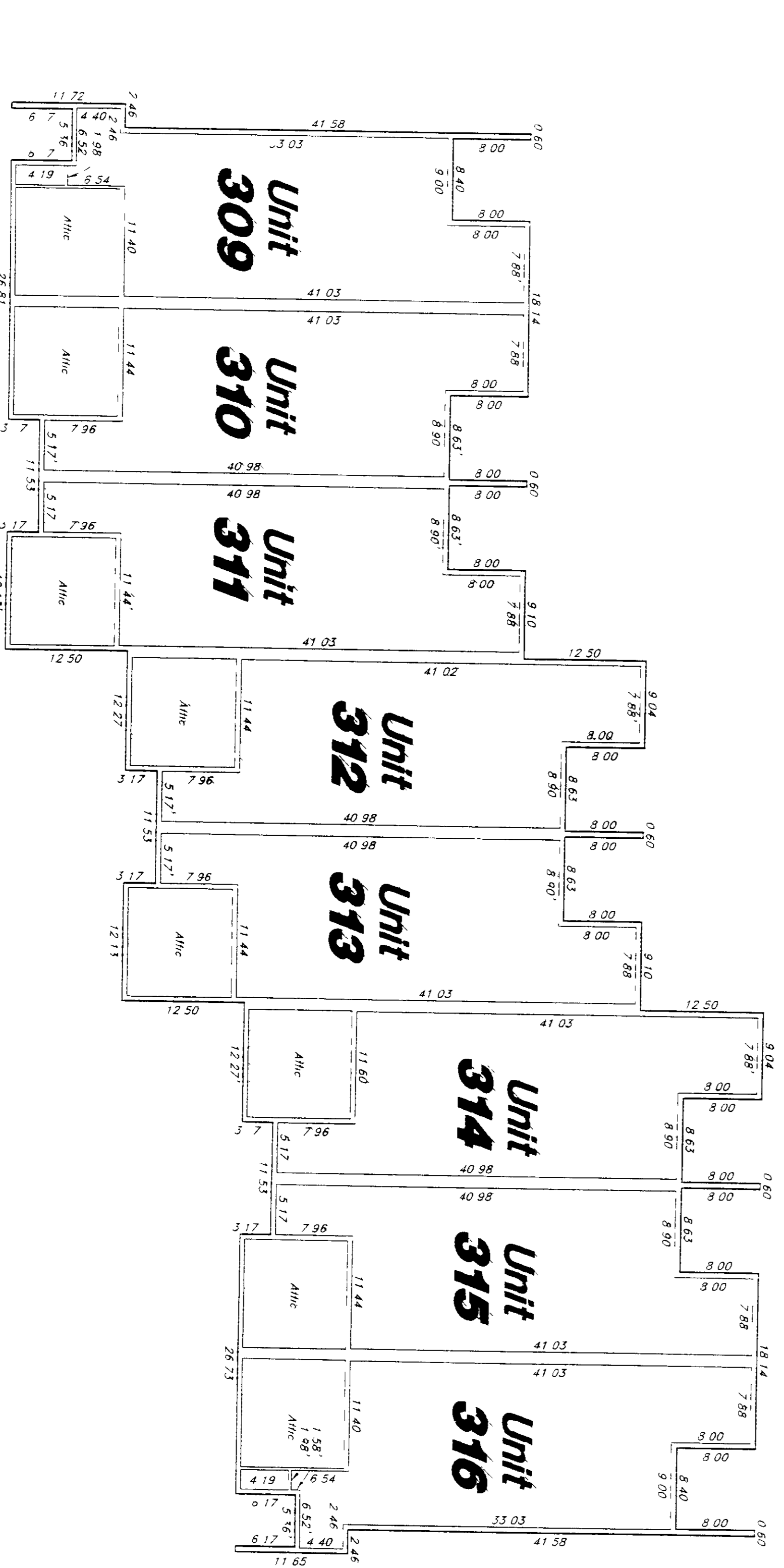
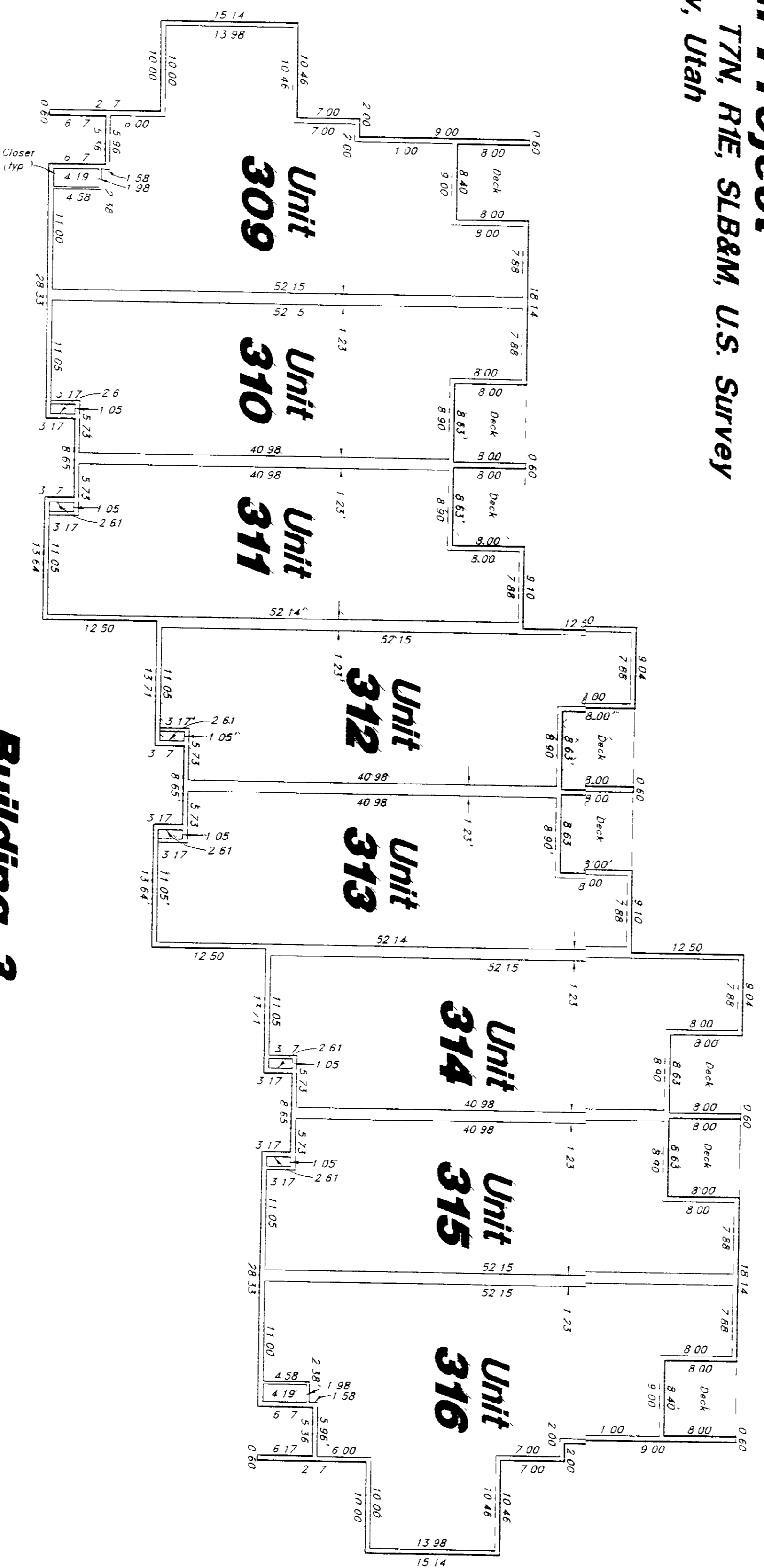


WEBER COUNTY RECORD
 FILED
 2001 JUN 13 10:51 AM
 SALT LAKE CITY, UT
 BY: [Signature]
 REC'D

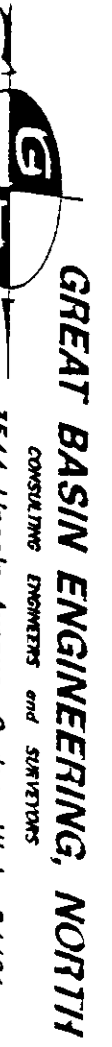
Record of Survey Map

WORLDMARK, THE CLUB AT WOLF CREEK VILLAGE PHASE I

A part of the South 1/2 of Section 22, T7N, R1E, SLB&M, U.S. Survey
Weber County, Utah

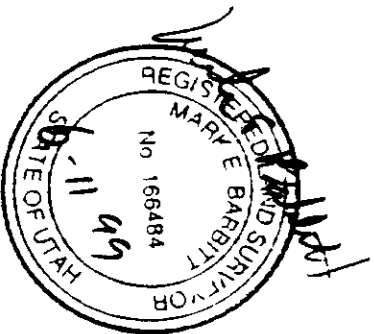


- Notes
1. Elevation are based on UICG datum benchmark, - Brass Cap of center of Section 22 T7N R1E SLB&M - Elev. 5122.59
 2. Each condominium unit enclosed within the project is shown by a diagonal stripe and is designated by a unit number.
 3. Storage areas, closets and balconies on decks enclosed within the areas are shown by cross hatched lines and are limited common use areas.
 4. All other areas contained within the project but are not shown with diagonal stripes are cross hatched lines are for common use areas.
 5. This building is not completed. Upon completion of construction the actual dimensions of the building shall be shown on the final location of improvement. (Foundation is in place).
 6. The elevation of all structures shall be greater than the elevation of any adjacent flood plain.



GREAT BASIN ENGINEERING NORTH
Professional Engineers and Surveyors
1544 Lincoln Avenue, Ogden, Utah, 84401
P.O. Box 8807, Ogden, Utah, 84408
Phone: (801) 791-2012 Fax: (801) 791-0878 Email: gben@gbn.com

Building 3
Loft Floor Plan
Scale 1" = 10'



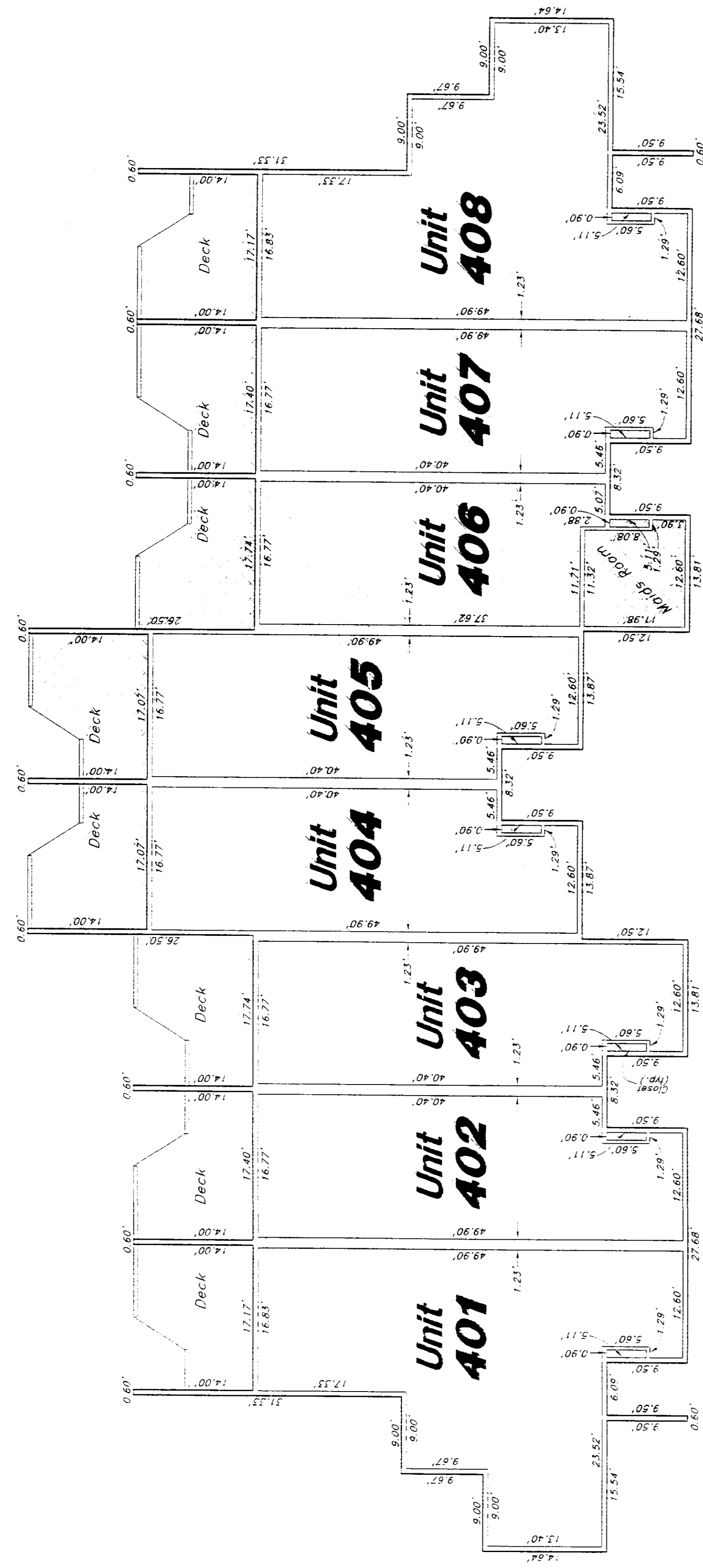
WEBER COUNTY RECORDER
FILED NO. (11/20/11) 11/20/11
11:40 AM
RECORDS & PERMITS DIVISION
COURT HOUSE BUILDING
CITY OF OGDEN, UTAH 84403
FOR: EVERETT AMERSON, TRUSTEE
DANIEL CRAPETS
WEBER COUNTY RECORDER
BY: *(Signature)*
DEPUTY

Record of Survey Map

WORLDMARK, THE CLUB AT WOLF CREEK VILLAGE PHASE I

A Condominium Project

A part of the Southwest 1/4 of Section 22, 17N, R1E, SLB&M, U.S. Survey
Weber County, Utah



Building 4
Main Level Floor Plan
Scale: 1" = 10'

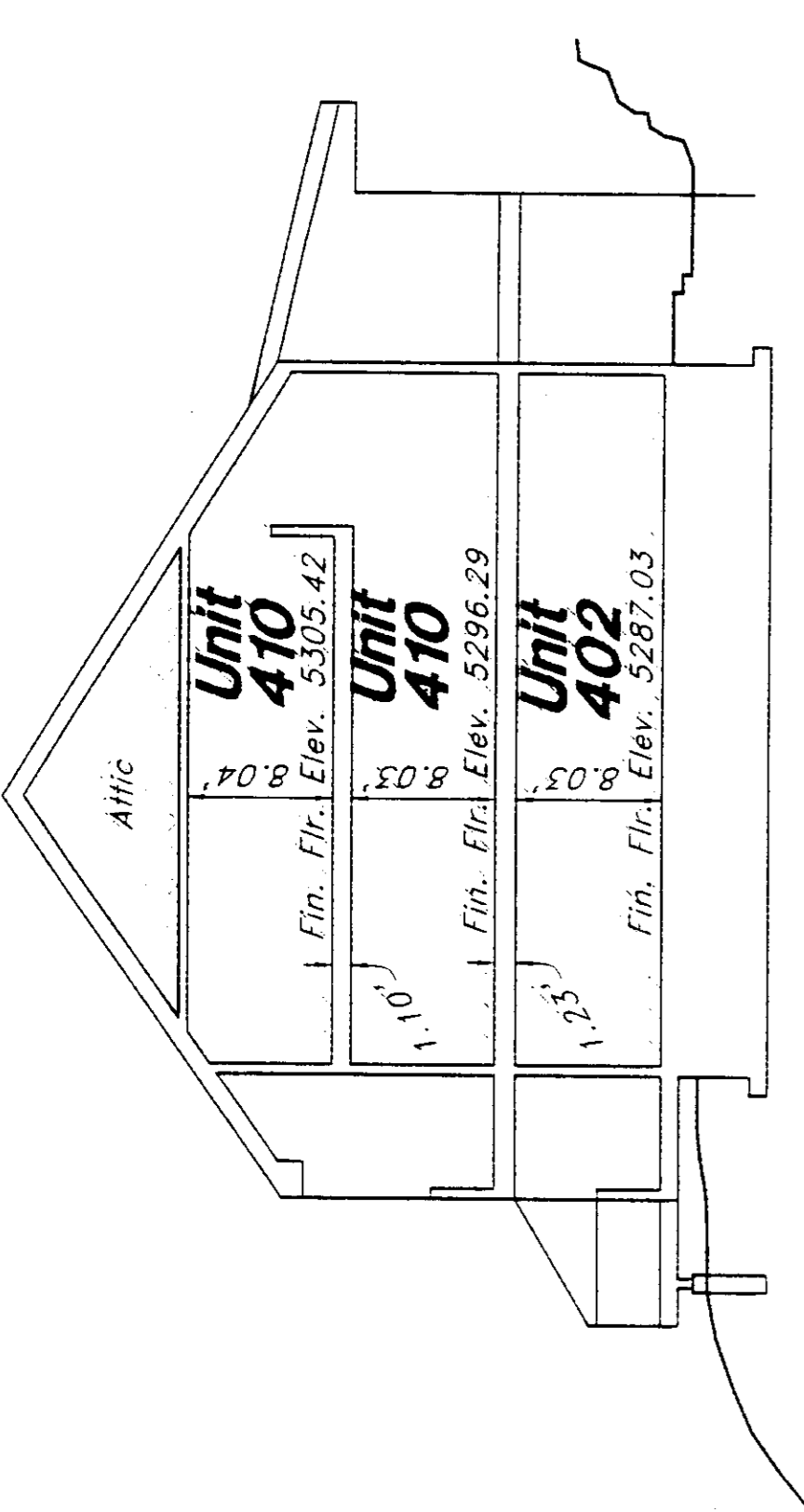
- Notes:**
1. Elevations are based on USGS datum Benchmark -- Brass Cap of center of Section 22, 17N, R1E, SLB&M = Elev. 5322.59
 2. Each condominium unit contained within the project is shown by a diagonal stripe and is designated by a unit number.
 3. Storage areas, patios, and balconies or decks contained within the project are shown by cross hatched lines and are limited common use areas.
 4. All other areas contained within the project but are not shown with diagonal stripes or cross hatched lines are for common use.
 5. This building is not completed. Upon completion of construction, the Map may require amendment in the event of any material change in the final location of improvements. (Foundation is in place.)
 6. The elevation of all structures shall be greater than the elevation of any adjacent flood plain.

002502

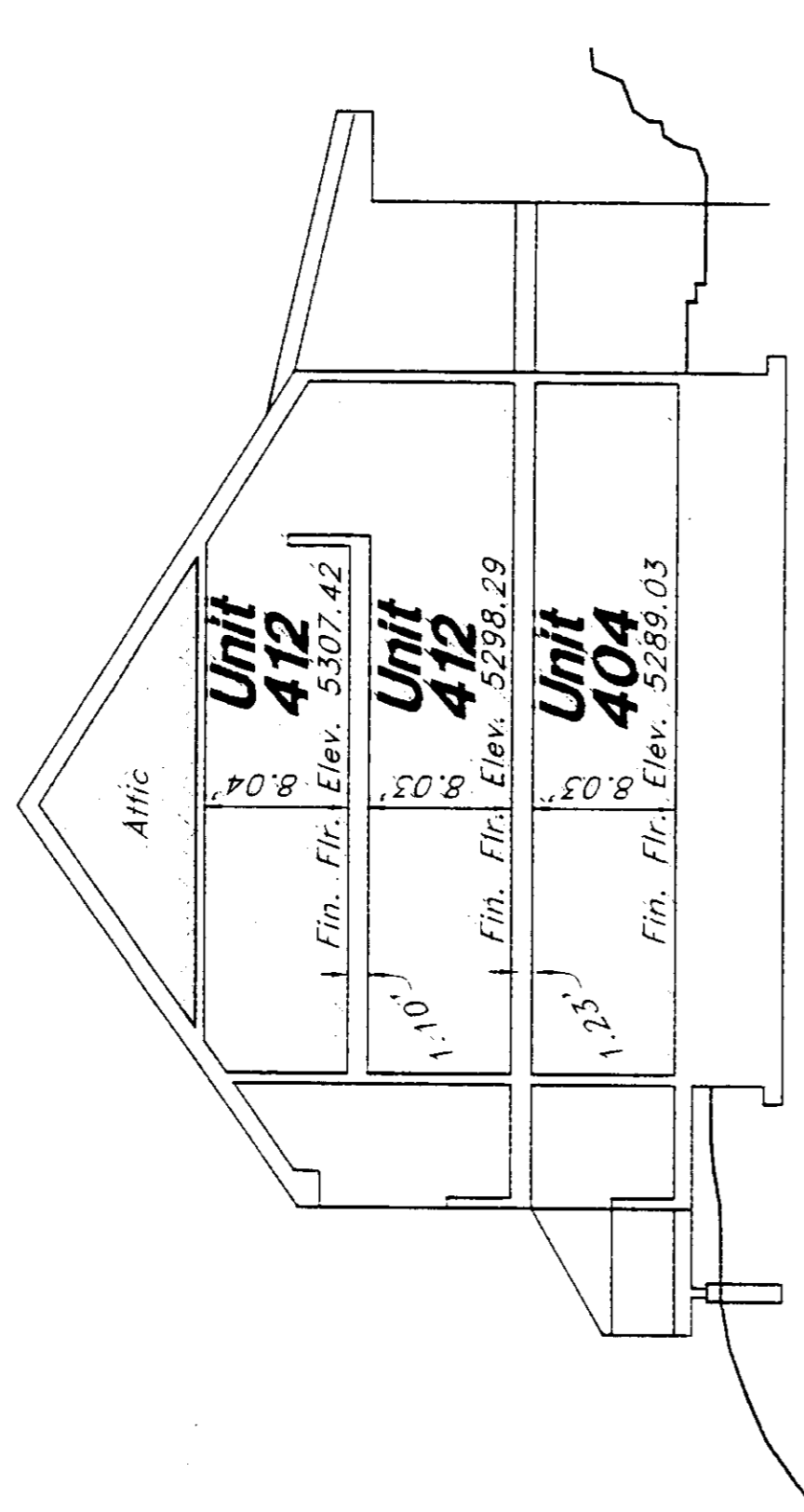
002502

4085

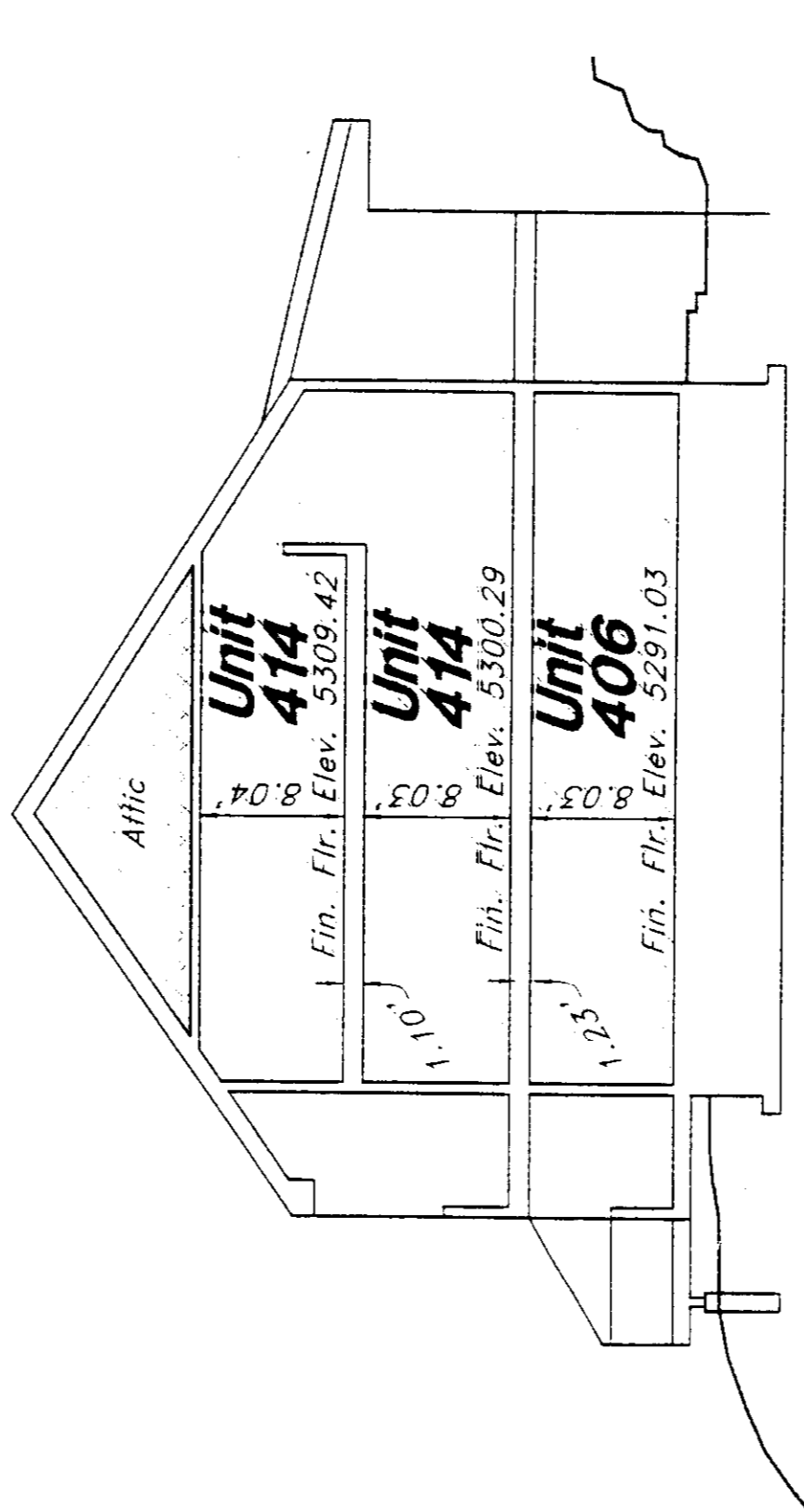
002502



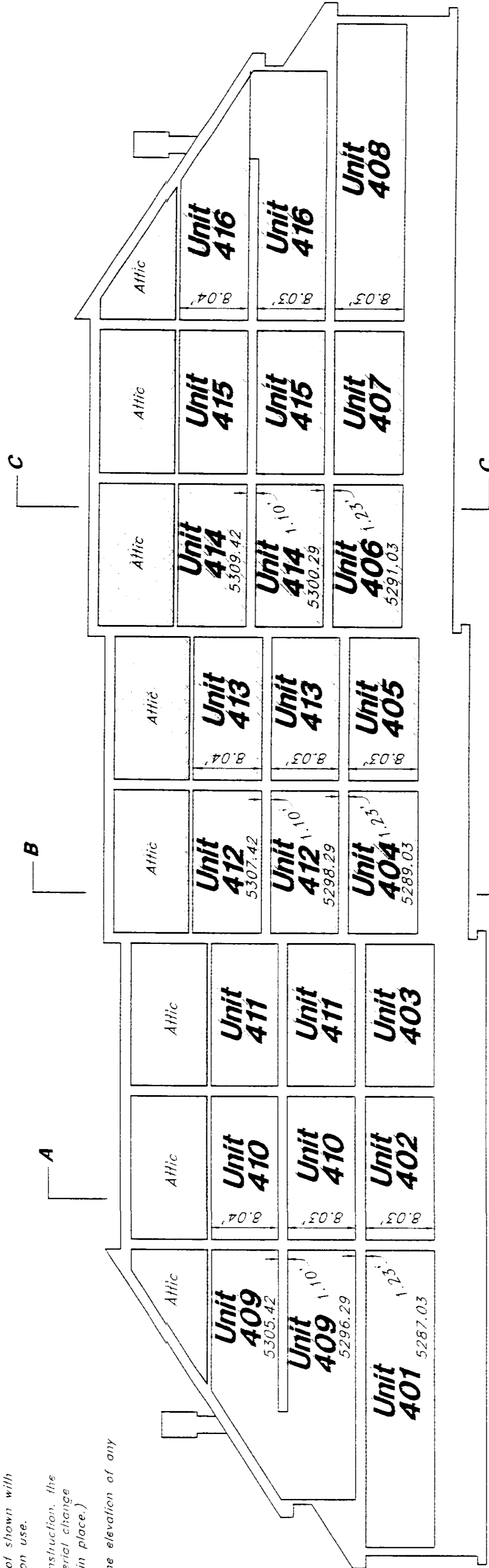
Building 4
Section A-A
Scale: 1" = 10'



Building 4
Section B-B
Scale: 1" = 10'

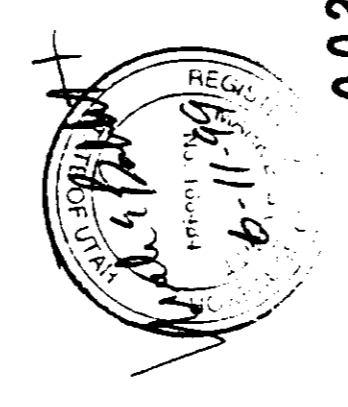


Building 4
Section C-C
Scale: 1" = 10'



Building 4
Section
Scale: 1" = 10'

GREAT BASIN ENGINEERING, NORTH
514 Lincoln Avenue, Ogden, Utah, 84401
P.O. Box 2397, Ogden, Utah, 84409
Open Office Hours: See our website: www.gben.com



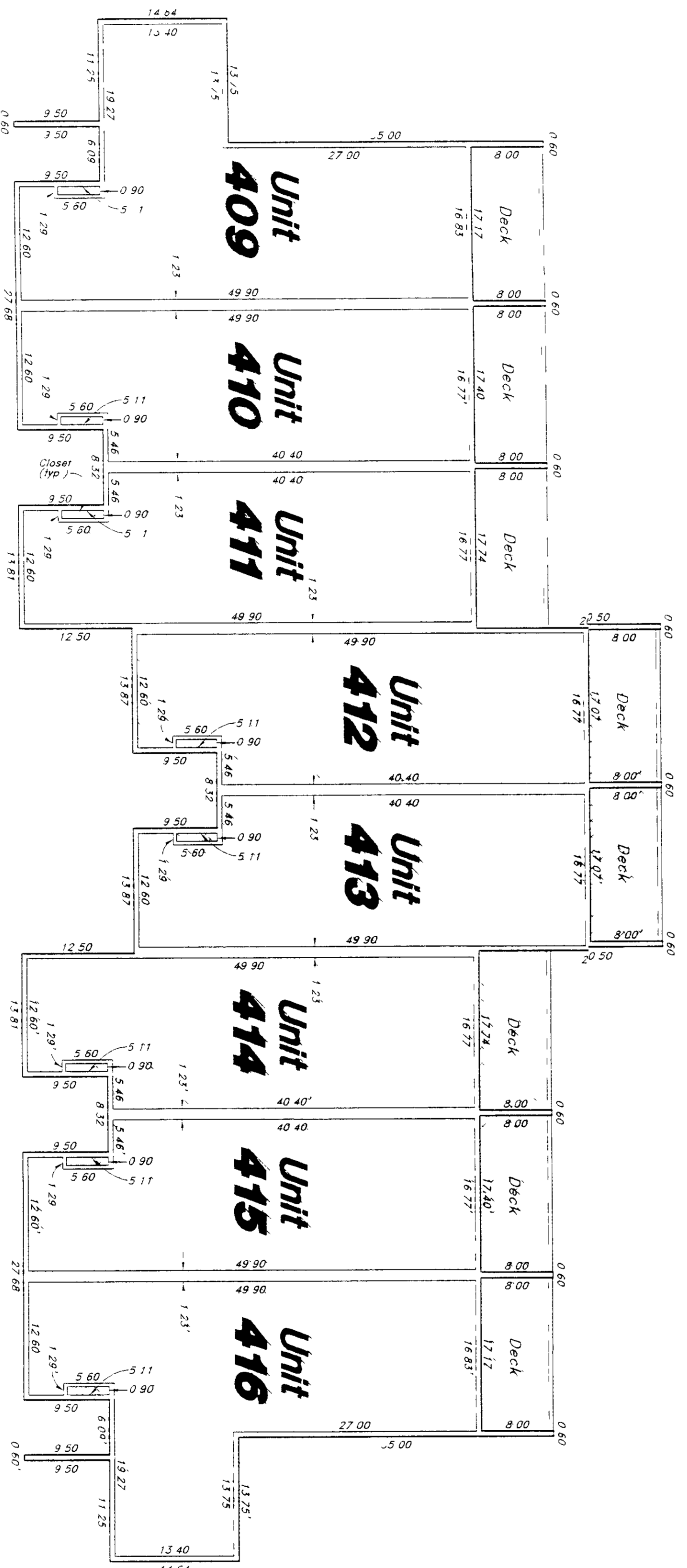
002502
Sheet 4 of 5

WEBER COUNTY RECORDER
CITY OF OGDEN
RECORDED FILE FOR RECORD AND
RECORDS PAGE 11
FOR FILE AMBULANCE
BWS GROUPS
WEBER COUNTY RECORDER
BY: *Bruce Gentry*
DEPUTY

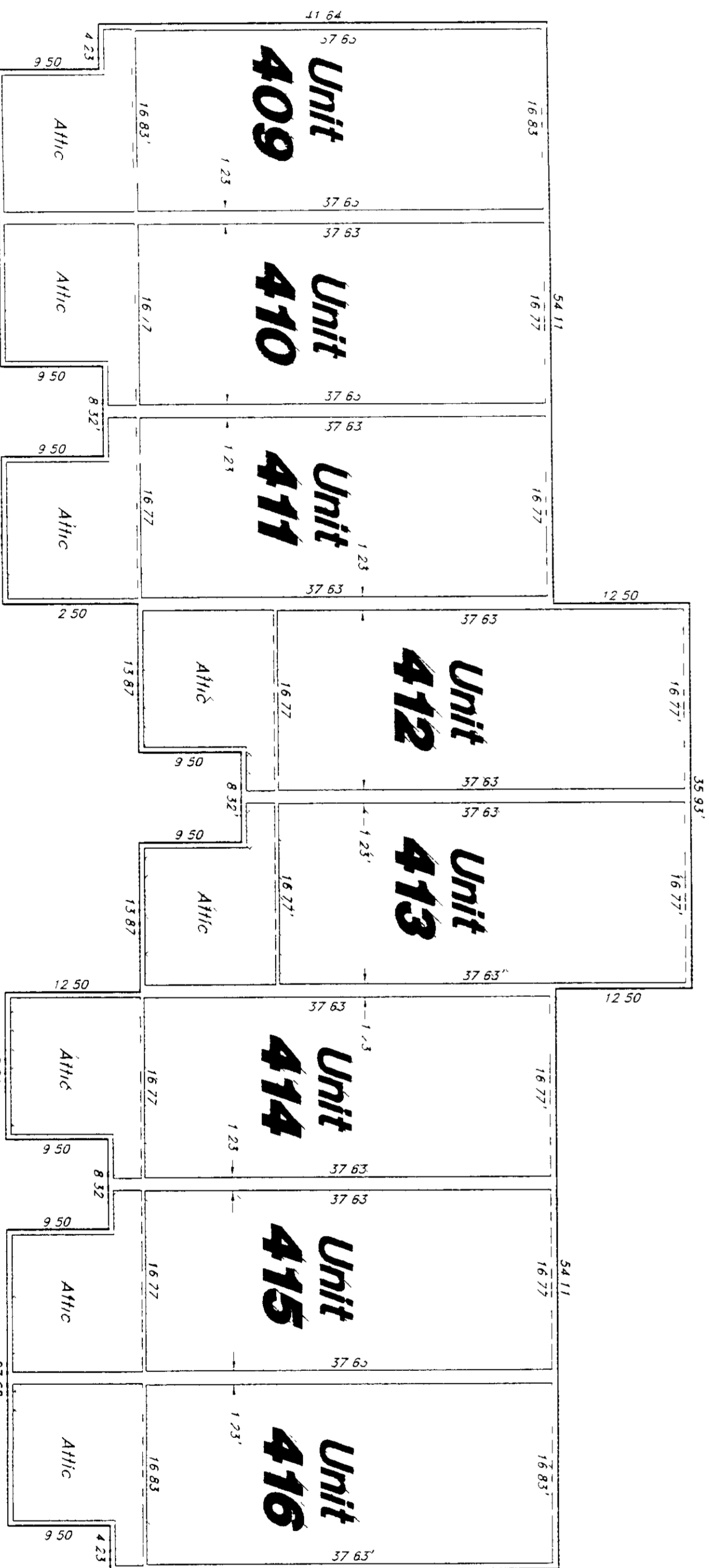
Record of Survey Map

WORLDMARK, THE CLUB AT WOLF CREEK VILLAGE PHASE I

A part of the Southwest 1/4 of Section 22, 17N, R1E, S1B&M, U.S. Survey
Weber County, Utah



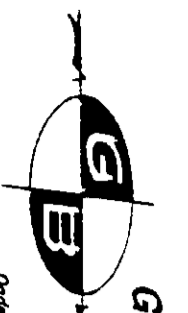
Building 4
Upper Level Floor Plan
Scale: 1" = 10'



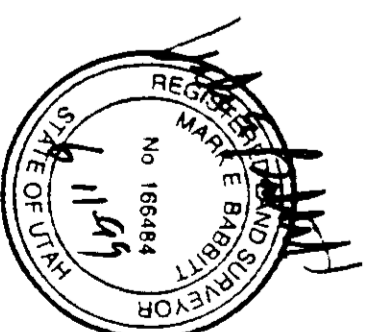
Building 4
Loft Floor Plan
Scale: 1" = 10'

NOTES

- 1 Elevations are based on USGS datum Benchmark - Gross Cap of center of Section 22, 17N, R1E, S1B&M - Elev. 5022.58
- 2 Each condominium unit contained within the project is shown by a diagonal stripe and is designated by a unit number.
- 3 Storage areas, porches, and balconies or decks contained within the project are shown by cross hatched lines and are limited common use areas.
- 4 All other areas contained within the project but are not shown with diagonal stripes or cross hatched lines are for common use.
- 5 This building is not completed. Upon completion of construction, the map may require amendment in the event of any material change in the final location of improvements. (Foundation is in place.)
- 6 The elevation of all structures shall be greater than the elevation of any adjacent flood plain.



GREAT BASIN ENGINEERING, NORTH
CONSULTING ENGINEERS AND SURVEYORS
3544 Lincoln Avenue, Ogden, Utah, 84403
Phone: (435) 744-4433 Fax: (435) 744-4434



002502
SHEET 5 OF 5

WEBER COUNTY RECORDER
CITY OF LINCOLN
RECORDED - 11 SEP 91
FILED - 11 SEP 91
BY: *Maria Williams*
DEPUTY