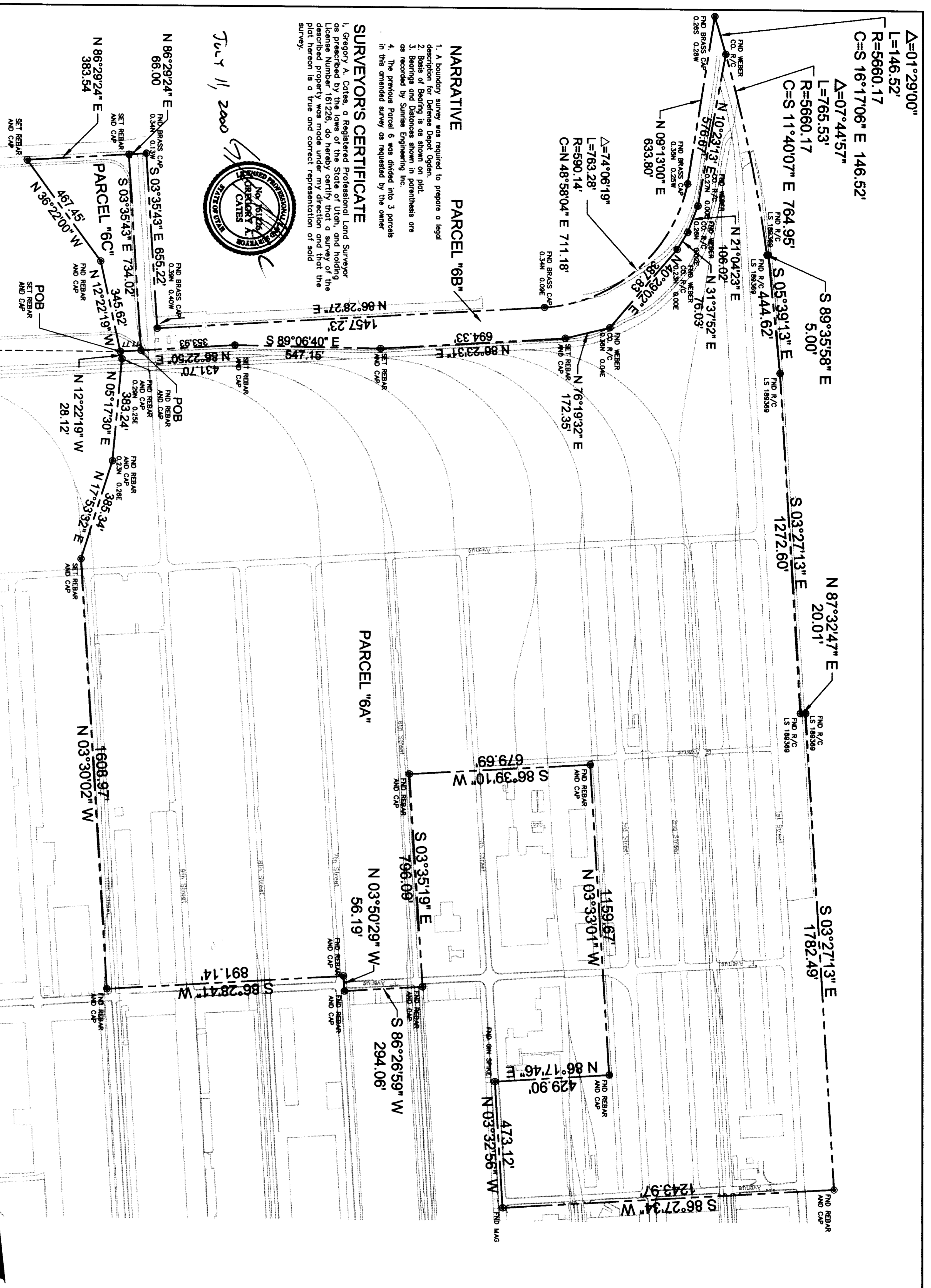


SURVEY BOUNDARY DESCRIPTIONS

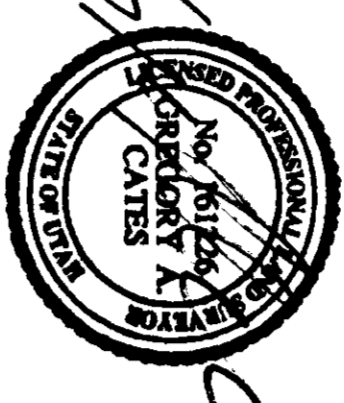
Parcel 56a
Beginning at a point which is 4128.81 feet North and 2457.89 feet East from the Weber County Survey Witness Corner Monument located at the intersection of 1200 West Street and 200 North Street...

Parcel 60c
Beginning at a point which is 4128.81 feet North and 2457.89 feet East from the Weber County Survey Witness Corner Monument located at the intersection of 1200 West Street and 200 North Street...

Parcel 68b
Beginning at a point which is 4128.81 feet North and 2457.89 feet East from the Weber County Survey Witness Corner Monument located at the intersection of 1200 West Street and 200 North Street...



NARRATIVE
1. A boundary survey was required to prepare a legal description of the parcels shown in parenthesis on this plat.
2. Bearings and Distances shown in parenthesis are as recorded by Sumner Engineering, Inc. in its previous survey of this area.



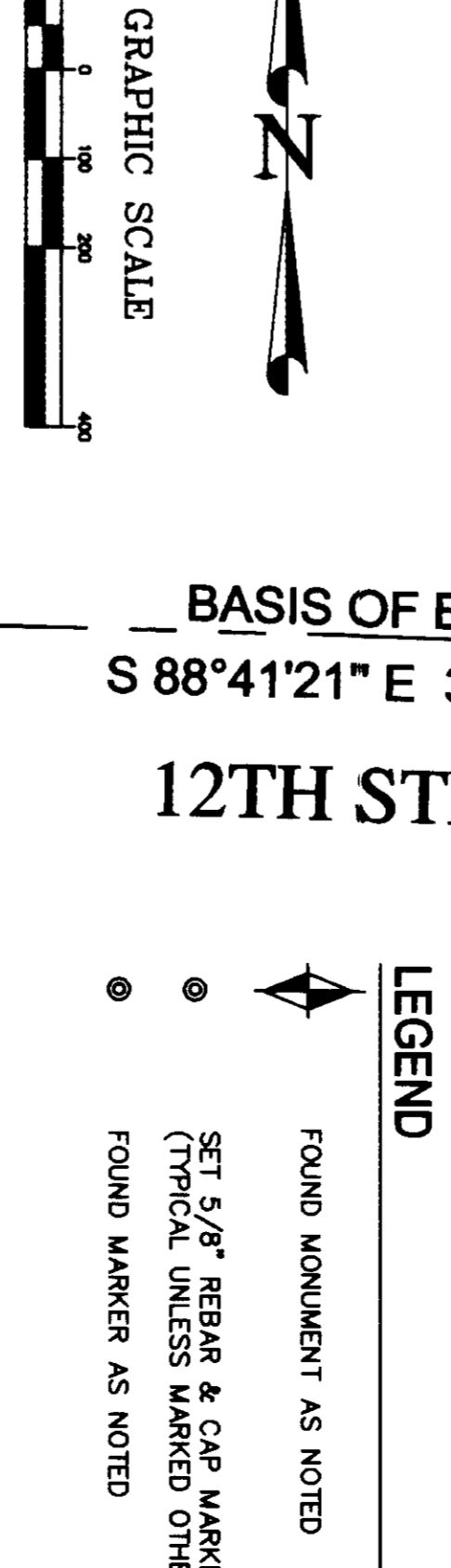
SURVEYOR'S CERTIFICATE
I, Gregory A. Catena, a Registered Professional Land Surveyor on precluded by the laws of the State of Utah, and holding the license No. 228, do hereby certify that a survey of the parcels described herein was made under my direct supervision and that this plat hereon is a true and correct representation of said survey.

July 11, 2000

Table with 5 columns: REV, BY, DATE, DESCRIPTION, and a section for RECORD OF SURVEY with fields for DESIGN, SCALE, PREPARED BY, CHECKED, and DATE.

1200 WEST STREET

BASIS OF BEARING
S 88°41'21" E 3664.95' (M)
12TH STREET



DEFENSE DROT OGDEN
FOST 2 - PARCEL 6
AMENDED APRIL 21, 2000

UTAH
SHEET 5
DRAWING NO. 14483