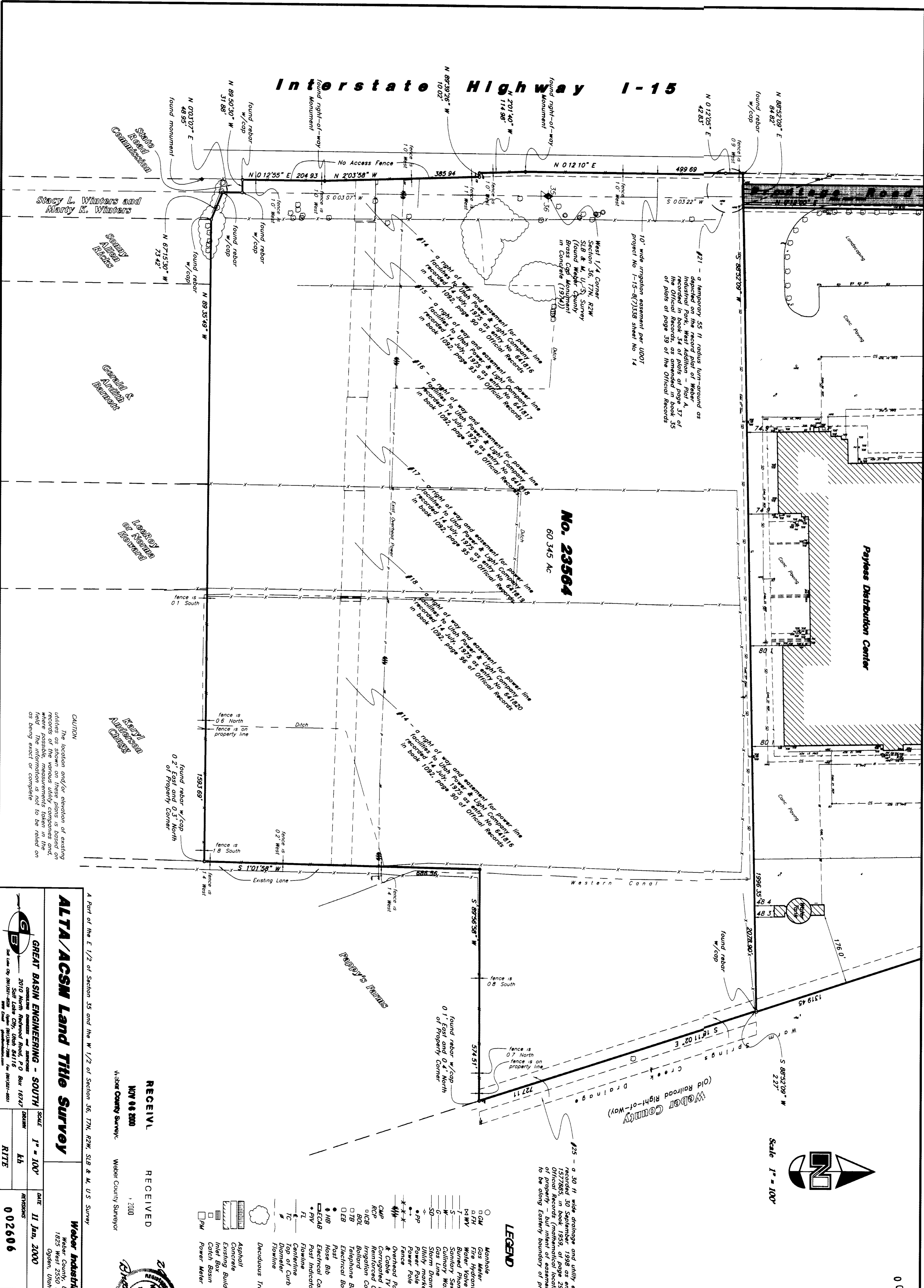


Interstate Highway I-15

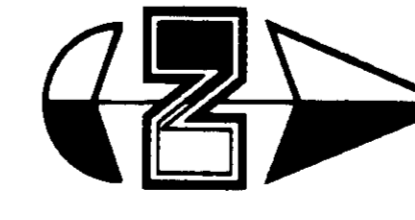


No. 23564
60.345 Ac

Payless Distribution Center

Old Railroad Right-of-Way
Weber County

Scale 1" = 100'

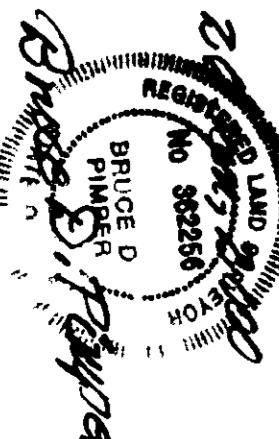


002606

#25 - a 30 ft wide drainage and utility easement recorded 30 September 1998 as entry No. 25 in the Official Records (mathematical location is East of property - but intent of easement appears to be along Eastern boundary of property)

LEGEND

- Monohole
- Gas Meter
- Fire Hydrant
- R/W
- Easement
- Buried Phone Cable
- Sanitary Sewer Line
- Gravity Water Line
- Storm Drain Line
- Utility marker
- Power Pole w/Guy
- Power Pole w/Guy
- K-K-X
- Overhead Power, Telephone & Cable TV Line
- CP
- RCP
- Reinforced Concrete Pipe
- u/CB
- B/D
- Bellcore Box
- Electrical Box
- Electrical Box
- H/B
- Electrical Cabinet
- Post Indicator Valve
- PIV
- Pole
- Top of Curb
- D/S
- D/S
- D/S
- Deciduous Tree
- Asphalt
- Concrete Building
- Existing Building
- Power Meter



RECEIVED
NOV 04 2000
Weber County Surveyor

ALTA/ACSM Land Title Survey

GREAT BASIN ENGINEERING - SOUTH
2010 North Redwood Road, P.O. Box 18747
Salt Lake City, Utah 84115
Tel: (801) 488-1100 Fax: (801) 488-1101

SCALE	1" = 100'	DATE	11 Jan, 2000
BY	LB	REVISIONS	002606
DATE	11 Jan, 2000	BY	LB

4

CAUTION
The location and/or elevation of existing utility lines are shown as recorded in the records of the various utility companies and where possible, measurements taken in the field are being used. It is not to be relied on as being correct.

A Part of the E 1/2 of Section 35 and the W 1/2 of Section 36, T7N, R2W, S1B & M, U.S. Survey
Weber County, Utah
1825 Ogden, Utah

Webster Industrial Park
Weber County, Utah