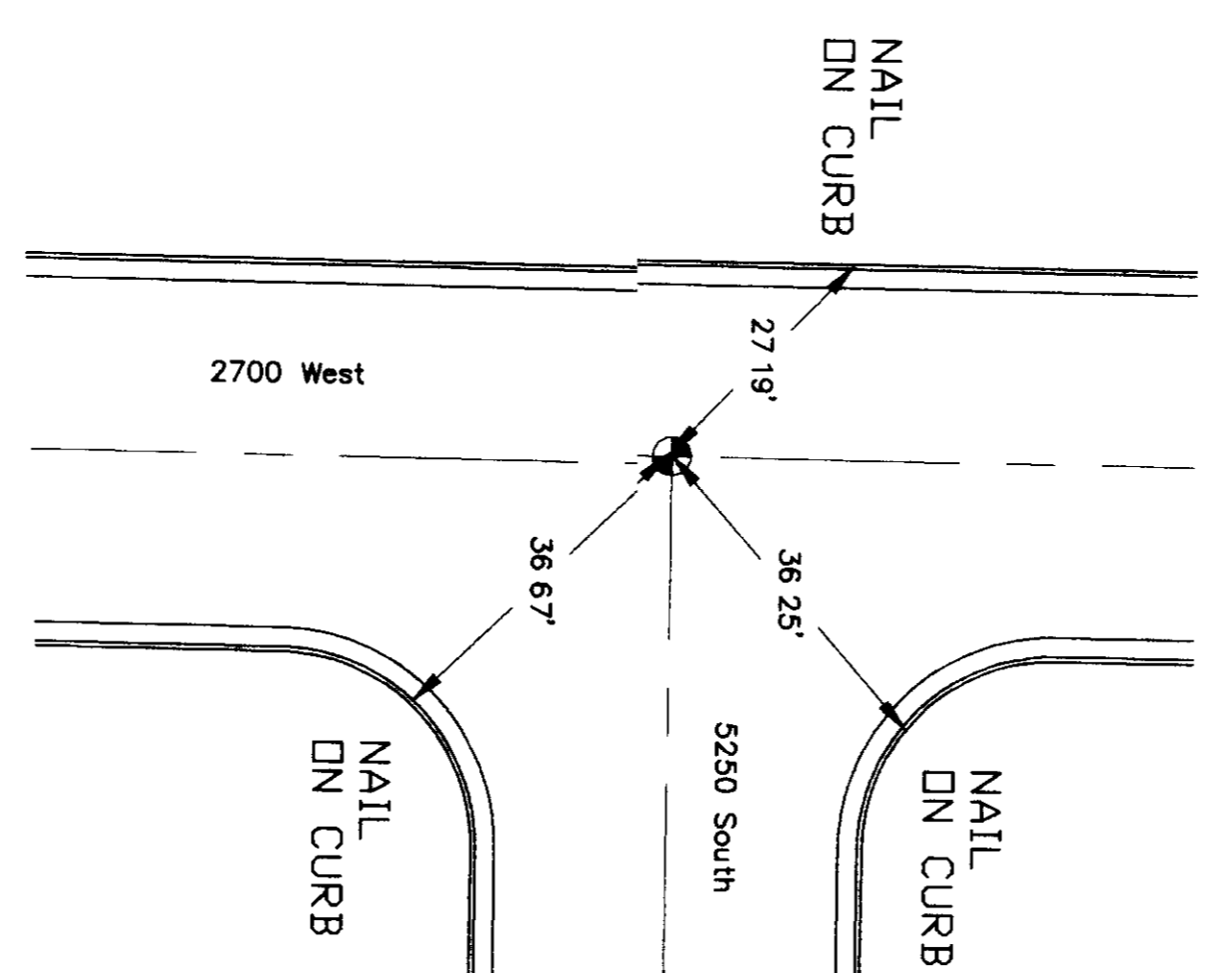
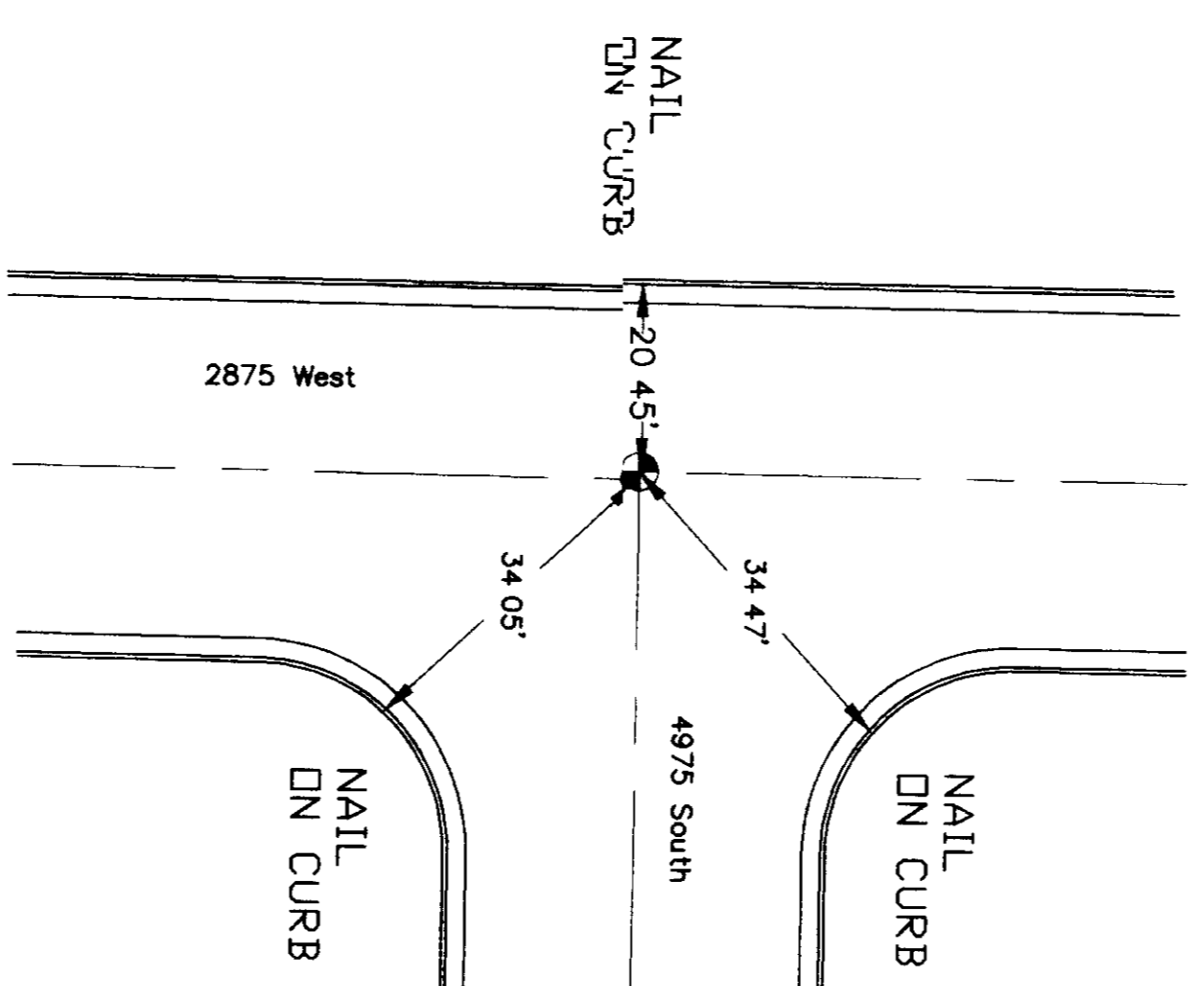
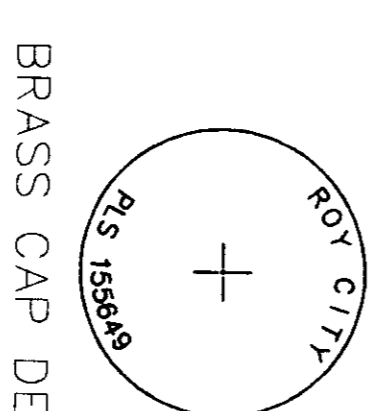
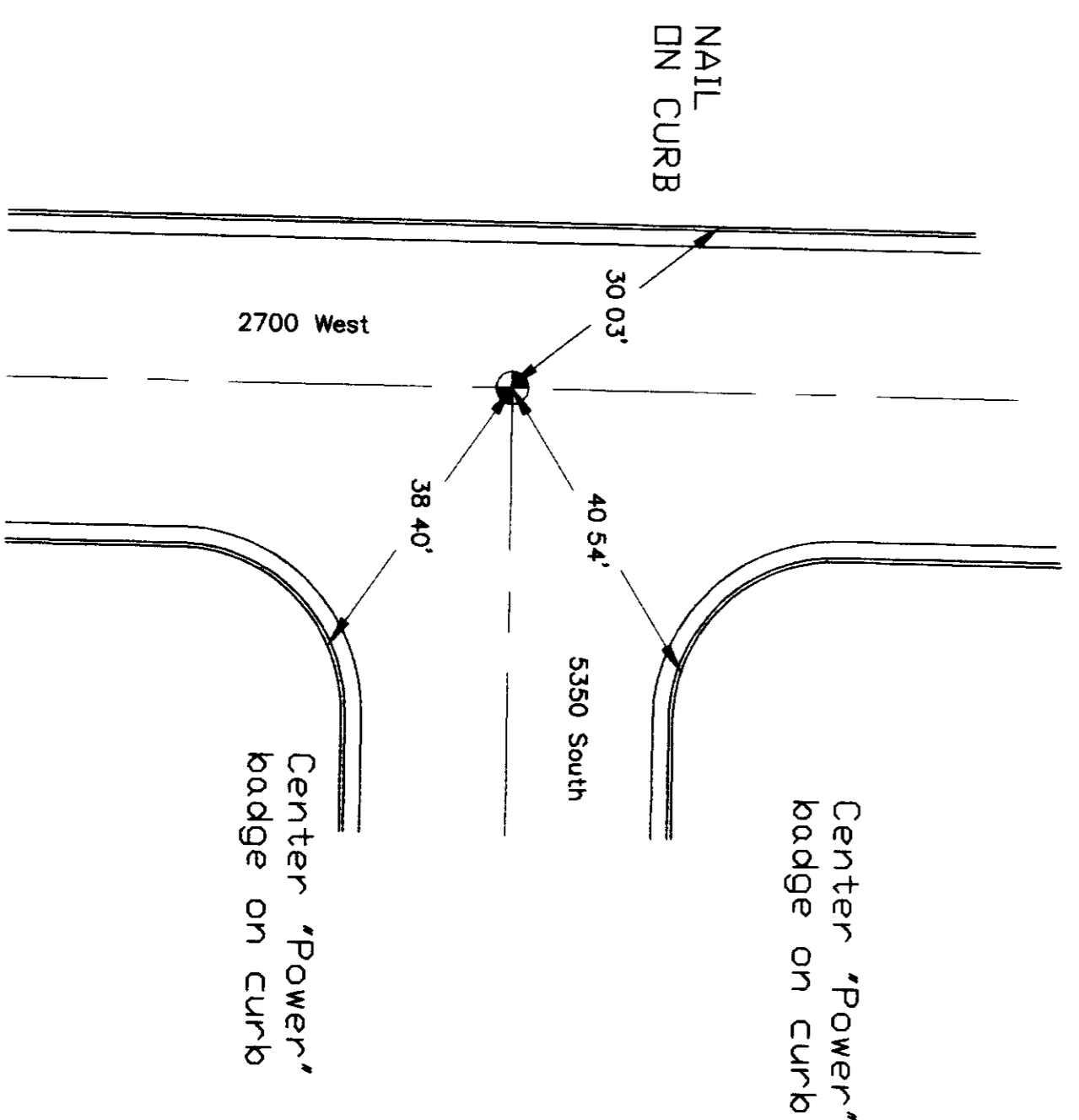
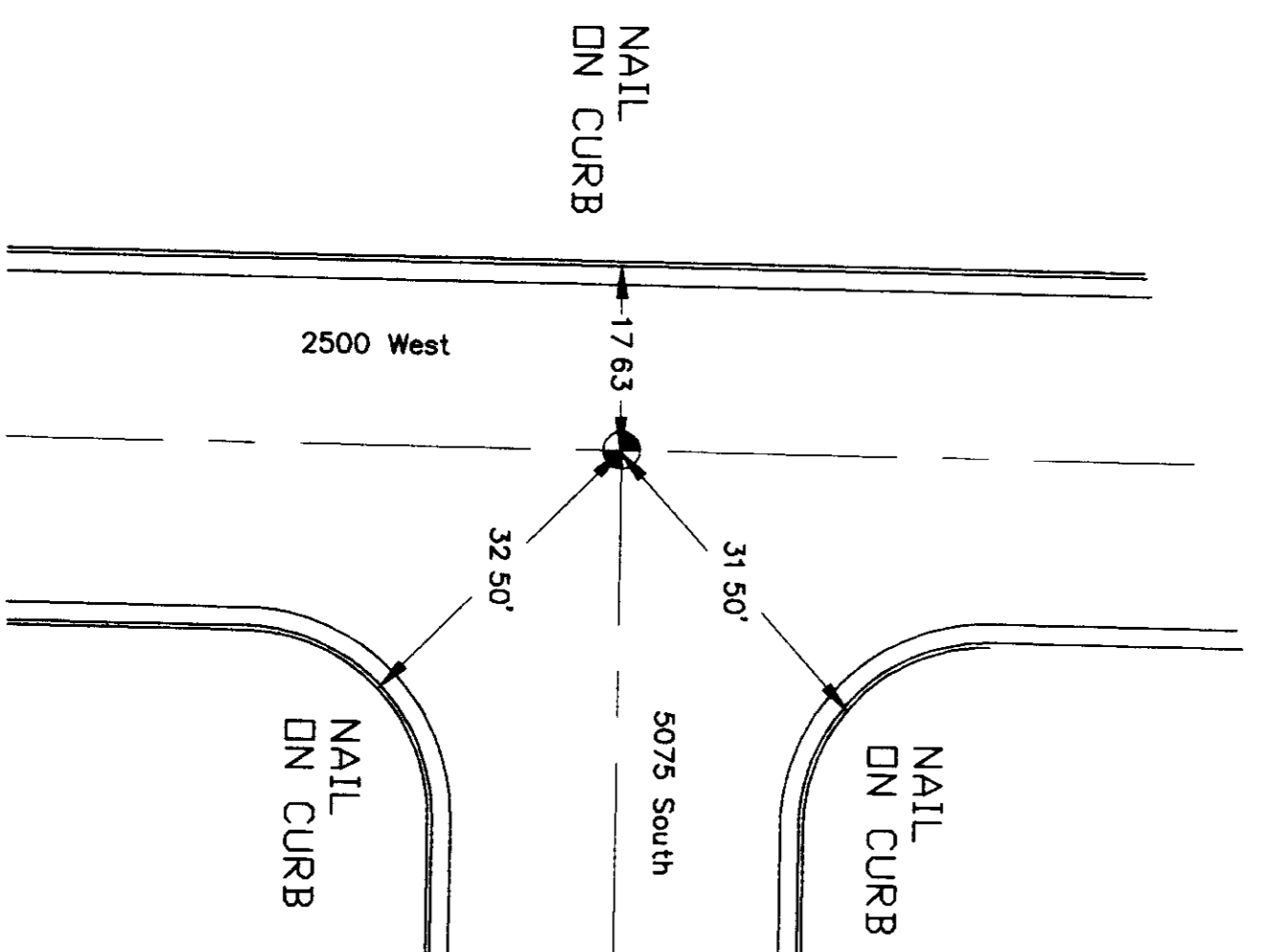


002609


RECORD OF SURVEY
CENTERLINE MONUMENTATION OF 2875 WEST, 2700 WEST, 2500 WEST
ROY CITY CORPORATION



Scale: 1" = 20'

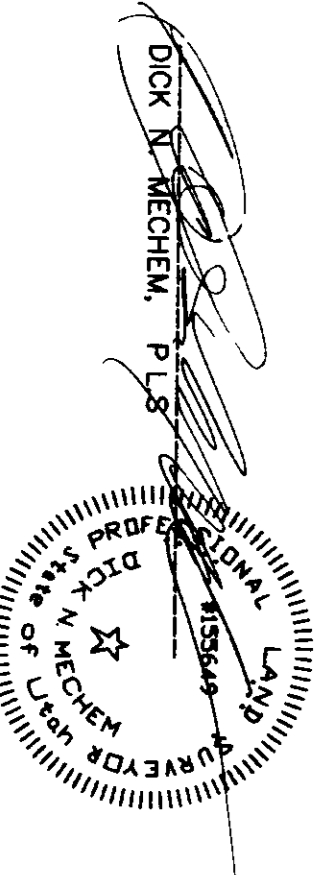


BRASS CAP DETAIL

LEGEND
 SET BRASS MONUMENT

VIII.

I, DICK N. MEEHEM, Utah Professional Land Surveyor No. 155646
 DO HEREBY CERTIFY THAT THE FOREGOING SURVEY WAS MADE
 ON THE GROUND BY ME AT THE REQUEST OF ROY CITY CORPORATION AND
 IN BEHALF OF MOUNTAIN WEST PROFESSIONAL LAND SURVEYORS, L.L.C., AND
 IS TRUE AND CORRECT TO THE BEST OF MY KNOWLEDGE AND BELIEF.



DONE
 09/22/2000

NARRATIVE OF SURVEY
 THIS SURVEY WAS PERFORMED TO REPLACE MONUMENTS DESTROYED
 DURING CONSTRUCTION. REFERENCE MONUMENTS WERE SET
 TO RE-ESTABLISH THE ORIGINAL INTERSECTION MONUMENTS INDICATED ON
 THIS MAP

DATE: SEP. 2000 No. 110-06-38 Date: 09/22/2000
 Monument Professional Land Surveyor, L.L.C.
 1200 Roy Utah 84002
 Phone: (801) 741-5538 Fax: (801) 741-5531

RECORD OF SURVEY
 for
 ROY CITY CORPORATION

002609

002609

002609

002609

002609