

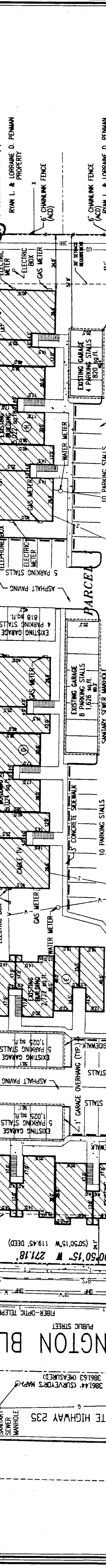
McNEIL ENGINEERING & LAND SURVEYING, L.C. McNEIL CONSULTING ENGINEERING, L.C. McNEIL ENGINEERING STRUCTURAL, L.C. McNEIL CONSULTING ENGINEERING, L.C.

McNEIL ENGINEERING, L.C. PROFESSIONAL CIVIL ENGINEERING & LAND SURVEYING SERVICES. 6695 SOUTH 900 EAST UTAH 84047. TEL: (801) 255-7125. WWW.MCNEIL-ENGINEERING.COM

ALTA/ACSM LAND TITLE SURVEY. RIDGEVIEW APARTMENTS. 710 NORTH WASHINGTON BOULEVARD, OGDEN, UTAH. LOCATED IN THE NE 1/4 OF SECTION 8, T14N, R10E.

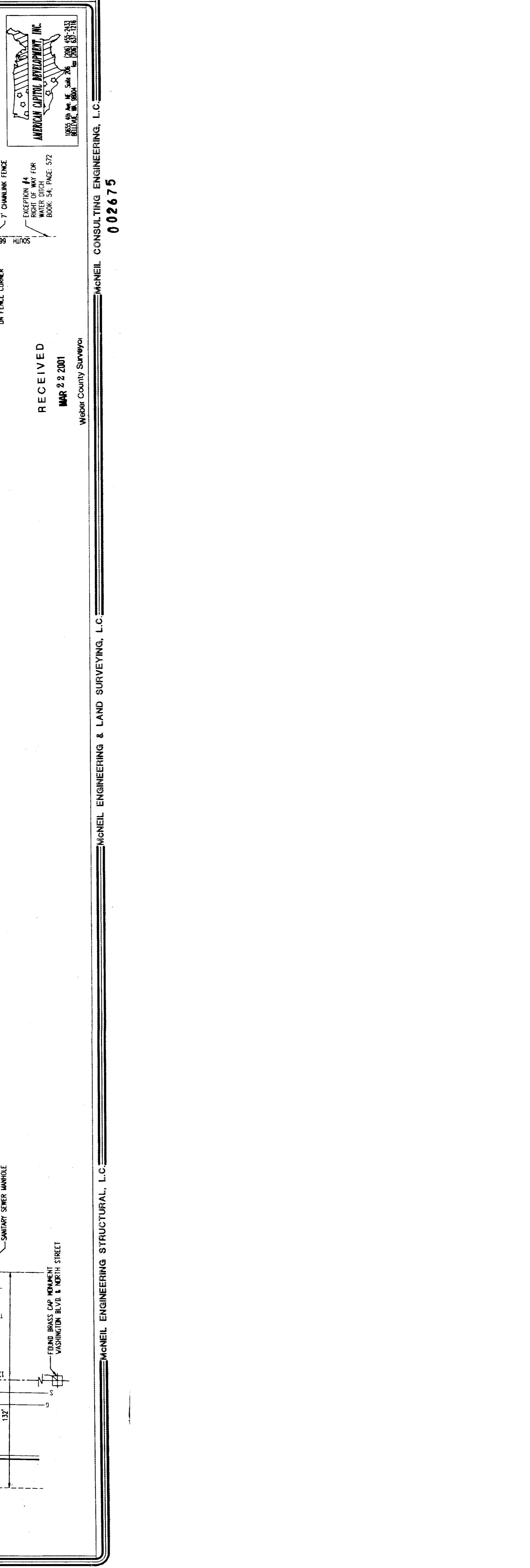
REVISIONS table with columns: NO., DATE, DESCRIPTION.

JOB NO: 200289. SHEET NUMBER: 1 OF 1. DATE: 06/22/00. DRAWN BY: CDM. CHECKED BY: CAJ/JR. SCALE: 1" = 30'.



NOTES: 1) NEW LANDSCAPING DRESS, SHRUBS, PLANTS, AND FLOWERS, ETC. NOT SHOWN. 2) CONCRETE CAP STOPS ARE IN ALL PARKING STALLS.

EXCEPTIONS: PARCEL 1: PART OF THE NORTHEAST QUARTER OF SECTION 8, TOWNSHIP 14 NORTH, RANGE 10 WEST, COUNTY OF WASHINGTON, UTAH... PARCEL 2: PART OF THE SOUTHWEST QUARTER OF SECTION 8, TOWNSHIP 14 NORTH, RANGE 10 WEST, COUNTY OF WASHINGTON, UTAH...



RECEIVED MAR 22 2001. Webber County Surveyor. McNEIL ENGINEERING & LAND SURVEYING, L.C.