

McNEIL ENGINEERING, L.C.
 PROFESSIONAL CIVIL ENGINEERING & LAND SURVEYING SERVICES
 6895 SOUTH 900 EAST UTAH 8047
 SALT LAKE CITY, UTAH 84119
 TEL: (801) 265-1212 FAX: (801) 265-1205
 VISIT OUR WEB SITE AT WWW.MCNEIL.COM



VALLEY VIEW APARTMENTS
 6700 SOUTH WASHATCH DRIVE SOUTH OGDEN CITY, UTAH
 LOCATED IN THE NE 1/4 OF SECTION 22, T4N, R11W, S4E

REV	DATE	DESCRIPTION
1	8/17/00	Issue for permit
2	10/19/00	Issue for record

DATE: 6/2000
 DRAWN BY: CM
 CALC BY: MPT/DMB
 SURVEYED BY: BL/OD
 CHECKED BY: DMB
 SCALE: 1" = 30'
 COMP. DRWG. 2002/VAL/DMG

JOB NO: 200297
SHEET NUMBER
1 OF 1

LEGEND

BOUNDARY LINE
 SECTION CORNER MONUMENT
 BARRIER POWER
 BARRIER TELEPHONE
 WATER LINE
 SANITARY SEWER LINE
 GAS LINE
 STORM DRAIN LINE
 SANITARY SEWER MANHOLE
 FIRE HYDRANT

POWER POLE
 CABLE TELEVISION
 EXISTING ELECTRIC METER
 EXISTING TELEPHONE BOX
 EXISTING CURB AND GUTTER
 EXISTING FENCE
 EXISTING ELECTRIC TRANSFORMER
 EXISTING 4" PAC STORM DRAIN CLEANOUT
 EXISTING SPRAWLER CONTROL BOX
 EXISTING GAS METER
 EXISTING WATER METER
 EXISTING STORM DRAIN MANHOLE
 EXISTING CATCH BASIN

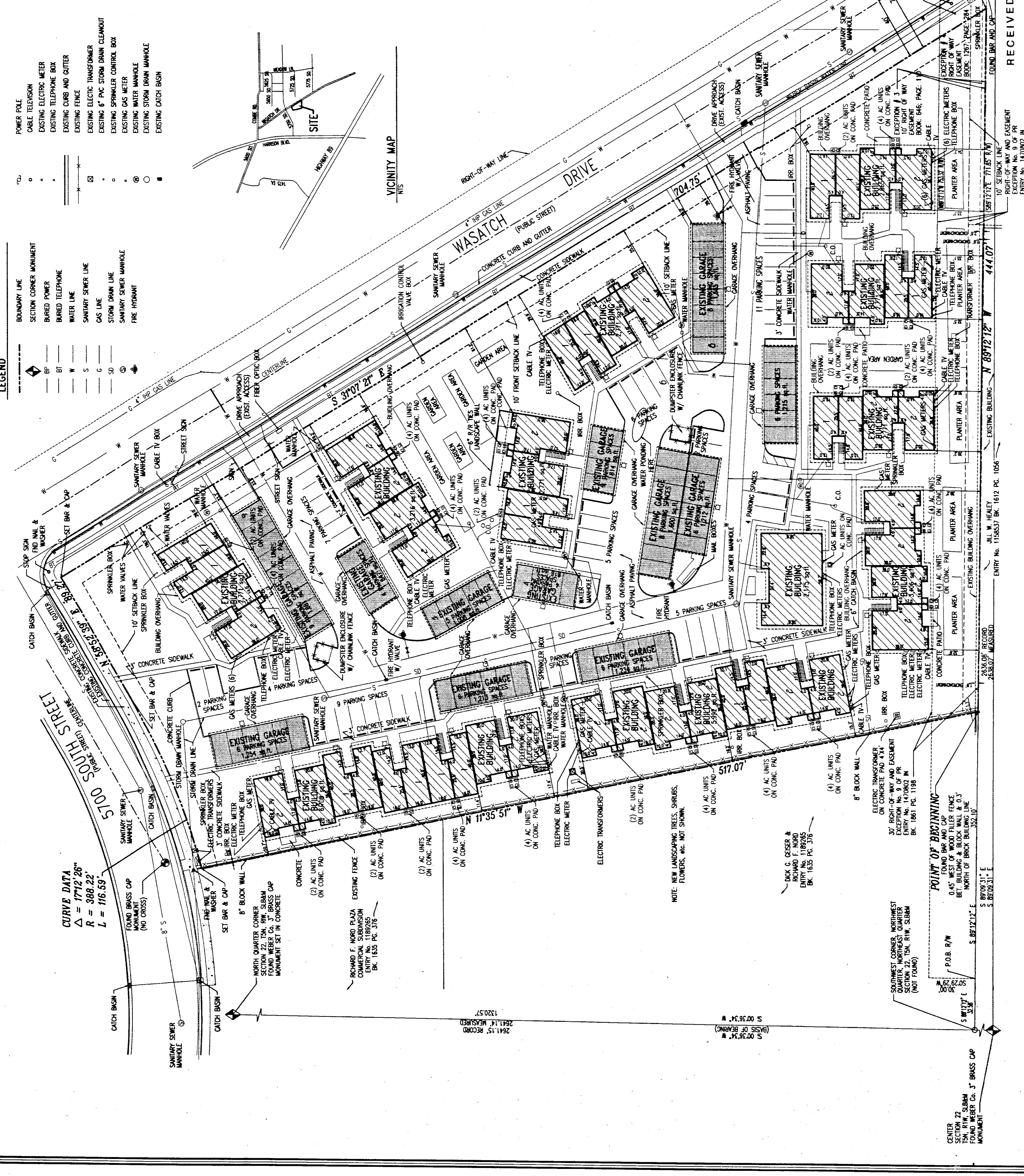
VICINITY MAP

NOTES

- THE PURPOSE OF THIS SURVEY IS TO PROVIDE AN ALTA/ACSM LAND TITLE SURVEY ON THE SUBJECT PROPERTY SHOWN ON THE PLAN OF THE LAND.
- THE SURVEY WAS CONDUCTED BY THE SURVEYOR IN ACCORDANCE WITH THE REQUIREMENTS OF THE UTAH SURVEYING ACT AND THE UTAH ALTA/ACSM LAND TITLE SURVEYING ACT.
- THE SURVEY WAS CONDUCTED ON THE DATE OF SURVEY AS SHOWN ON THE PLAN.
- THE SURVEY WAS CONDUCTED IN ACCORDANCE WITH THE REQUIREMENTS OF THE UTAH SURVEYING ACT AND THE UTAH ALTA/ACSM LAND TITLE SURVEYING ACT.
- THE SURVEY WAS CONDUCTED IN ACCORDANCE WITH THE REQUIREMENTS OF THE UTAH SURVEYING ACT AND THE UTAH ALTA/ACSM LAND TITLE SURVEYING ACT.
- THE SURVEY WAS CONDUCTED IN ACCORDANCE WITH THE REQUIREMENTS OF THE UTAH SURVEYING ACT AND THE UTAH ALTA/ACSM LAND TITLE SURVEYING ACT.
- THE SURVEY WAS CONDUCTED IN ACCORDANCE WITH THE REQUIREMENTS OF THE UTAH SURVEYING ACT AND THE UTAH ALTA/ACSM LAND TITLE SURVEYING ACT.
- THE SURVEY WAS CONDUCTED IN ACCORDANCE WITH THE REQUIREMENTS OF THE UTAH SURVEYING ACT AND THE UTAH ALTA/ACSM LAND TITLE SURVEYING ACT.
- THE SURVEY WAS CONDUCTED IN ACCORDANCE WITH THE REQUIREMENTS OF THE UTAH SURVEYING ACT AND THE UTAH ALTA/ACSM LAND TITLE SURVEYING ACT.
- THE SURVEY WAS CONDUCTED IN ACCORDANCE WITH THE REQUIREMENTS OF THE UTAH SURVEYING ACT AND THE UTAH ALTA/ACSM LAND TITLE SURVEYING ACT.
- THE SURVEY WAS CONDUCTED IN ACCORDANCE WITH THE REQUIREMENTS OF THE UTAH SURVEYING ACT AND THE UTAH ALTA/ACSM LAND TITLE SURVEYING ACT.
- THE SURVEY WAS CONDUCTED IN ACCORDANCE WITH THE REQUIREMENTS OF THE UTAH SURVEYING ACT AND THE UTAH ALTA/ACSM LAND TITLE SURVEYING ACT.
- THE SURVEY WAS CONDUCTED IN ACCORDANCE WITH THE REQUIREMENTS OF THE UTAH SURVEYING ACT AND THE UTAH ALTA/ACSM LAND TITLE SURVEYING ACT.
- THE SURVEY WAS CONDUCTED IN ACCORDANCE WITH THE REQUIREMENTS OF THE UTAH SURVEYING ACT AND THE UTAH ALTA/ACSM LAND TITLE SURVEYING ACT.
- THE SURVEY WAS CONDUCTED IN ACCORDANCE WITH THE REQUIREMENTS OF THE UTAH SURVEYING ACT AND THE UTAH ALTA/ACSM LAND TITLE SURVEYING ACT.

NOTES

- NEW LANDSCAPING TREES, SHRUBS, AND FLOWERS, SEE PLAN.
- CONCRETE CAR STOPS ARE IN ALL PARKING SPACES.
- CONCRETE CAR STOPS ARE IN ALL PARKING SPACES.
- CONCRETE CAR STOPS ARE IN ALL PARKING SPACES.
- CONCRETE CAR STOPS ARE IN ALL PARKING SPACES.
- CONCRETE CAR STOPS ARE IN ALL PARKING SPACES.
- CONCRETE CAR STOPS ARE IN ALL PARKING SPACES.
- CONCRETE CAR STOPS ARE IN ALL PARKING SPACES.
- CONCRETE CAR STOPS ARE IN ALL PARKING SPACES.
- CONCRETE CAR STOPS ARE IN ALL PARKING SPACES.
- CONCRETE CAR STOPS ARE IN ALL PARKING SPACES.
- CONCRETE CAR STOPS ARE IN ALL PARKING SPACES.
- CONCRETE CAR STOPS ARE IN ALL PARKING SPACES.
- CONCRETE CAR STOPS ARE IN ALL PARKING SPACES.
- CONCRETE CAR STOPS ARE IN ALL PARKING SPACES.
- CONCRETE CAR STOPS ARE IN ALL PARKING SPACES.



McNEIL ENGINEERING & LAND SURVEYING, L.C.
 McNEIL CONSULTING ENGINEERING, L.C.
 McNEIL ENGINEERING STRUCTURAL, L.C.
 002677

RECEIVED
 MAR 22 2001
 Weber County Surveyors