

002687

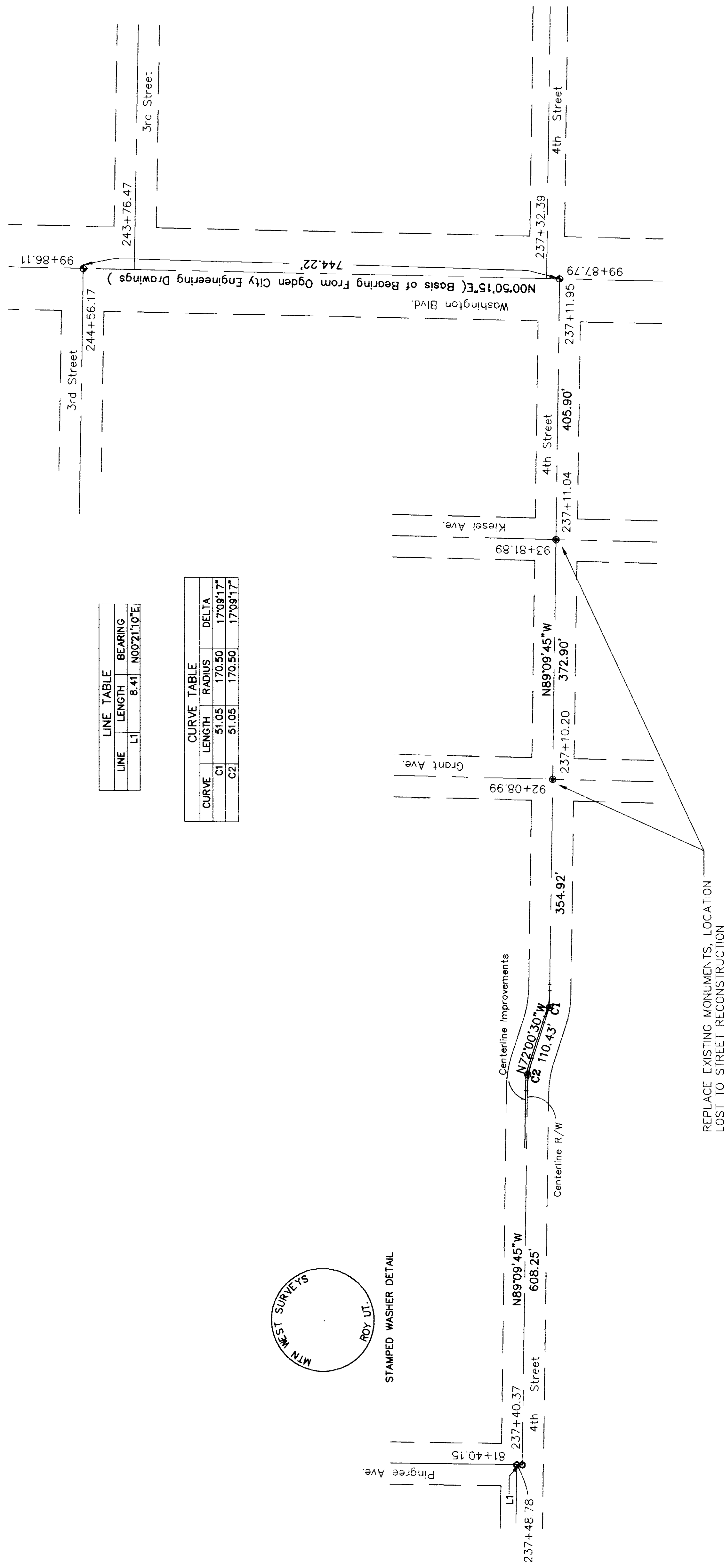
**RECORD OF SURVEY**  
**CENTERLINE MONUMENTATION OF 4th STREET**  
**CITY OF OGDEN**  
 NORTHEAST QUARTER OF SEC 17, TOWNSHIP 6 NORTH, RANGE 1 WEST, S.L.B. & M.



Scale: 1" = 100'

**LEGEND**

- SET NAIL & WASHER W/ REFERENCE NAILS MONUMENTS TO BE SET BY OTHERS
- SET " MAG NAIL " & WASHER
- ◆ FOUND MONUMENT, ACCEPTED FOR CONTROL



LINE TABLE		
LINE	LENGTH	BEARING
L1	6.41	N002110E

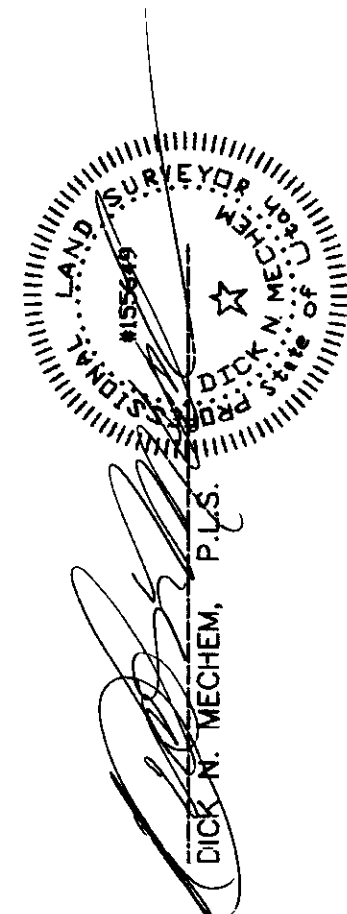
CURVE TABLE			
CURVE	LENGTH	RADIUS	DELTA
C1	51.05	170.90	173817
C2	51.05	170.90	173817



STAMPED WASHER DETAIL

**SURVEYORS CERTIFICATE**

I, Dick N. Mechem, do hereby certify that I am a licensed land surveyor of the State of Utah and that I have personally supervised the making of this survey and that all monuments shown herein are of the character and occupy the positions indicated and are sufficient to enable the survey to be retraced.



*[Signature]*  
 DATE

**Narrative and Statement of Purpose**

This survey was performed for the purpose of setting centerline monument locations on 4th Street as requested by the Ogden City Engineer's Office. Existing monuments were found and referenced at 4th St. & Kiesel Ave. and 4th St. & Grant Ave. before reconstruction of 4th Street commenced. These monuments were lost during construction. The same monuments on Washington Blvd. that were utilized to reference the centerline of 4th Street to design plans provided by Jones and Assoc., Eng. and approved by the Ogden City Engineer's Office, The intersection locations at 4th St. and Pingree Ave., as well as the basis of bearing, are from Ogden City Engineering drawings.

REPLACE EXISTING MONUMENTS, LOCATION  
 LOST TO STREET RECONSTRUCTION

RECEIVED  
 APR 10 2001

Weber County Surveyor

002687

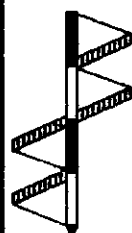
**RECORD OF SURVEY**

for

CITY OF OGDEN

Located In The Northeast One-Quarter Of Section 17,  
 Township 6 North, Range 1 West, S.L.B.M.

Date: 4/2/01 By: DNM-SPJ For: OAH Rick DNM  
 North: West of Washington Blvd. Surveyors, LLC  
 Roy, Utah 84607  
 Phone: (801) 791-5525 Fax: (801) 791-5528



002687

002687

002687

002687