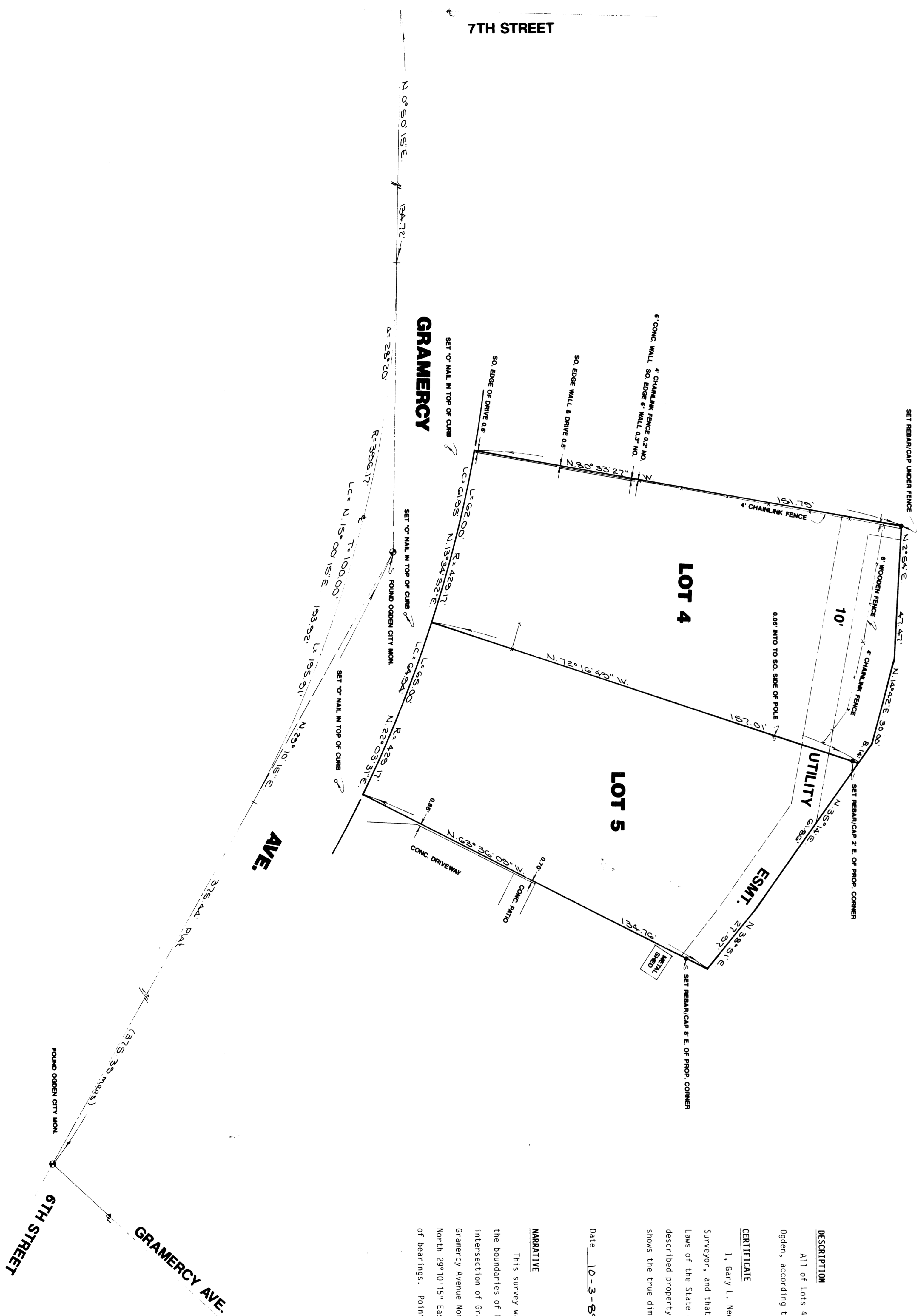


PLAN HOLD CORPORATION • IRVINE, CALIFORNIA
REORDER BY NUMBER 0754R
POSITION EDGE OF PRINT ON THIS LINE

PLAN HOLD CORPORATION • IRVINE, CALIFORNIA
REORDER BY NUMBER 0754R
POSITION EDGE OF PRINT ON THIS LINE

PLAN HOLD CORPORATION • IRVINE, CALIFORNIA
REORDER BY NUMBER 0754R
POSITION EDGE OF PRINT ON THIS LINE

PLAN HOLD CORPORATION • IRVINE, CALIFORNIA
REORDER BY NUMBER 0754R
POSITION EDGE OF PRINT ON THIS LINE

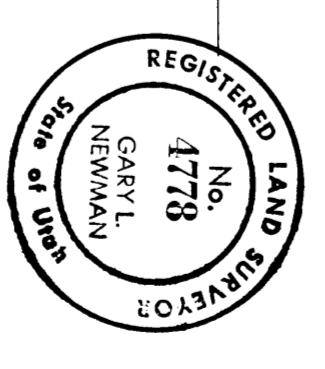


Scale 1"=20'

DESCRIPTION
All of Lots 4 and 5, Block 1, North Park No. 1 in the City of Ogden, according to the official plat thereof.

CERTIFICATE
I, Gary L. Newman, do hereby certify that I am a Registered Land Surveyor, and that I hold Certificate No. 4778, as prescribed by the Laws of the State of Utah, and I have made a survey of the above described property. I further certify that the above plat correctly shows the true dimensions of the property surveyed.

Date 10-3-89
Gary L. Newman
Gary L. Newman



NARRATIVE
This survey was requested by Mr. Vern Stacey in order to establish the boundaries of Lots 4 & 5. Ogden City Monuments were found at the intersection of Gramercy Avenue and 6th Street and also at the P.I. on Gramercy Avenue North of 7th Street. A line bearing North 29°10'15" East between these two monuments was used as the basis of bearings. Points set are as depicted on this drawing.

RECEIVED
NOV 16 1989
Vern Stacey

GREAT BASIN ENGINEERING, INC.
CONSULTING ENGINEERS & SURVEYORS
OGDEN & SALT LAKE CITY, UTAH

PROPERTY SURVEY FOR VERN STACEY

LOTS 4 & 5 BLOCK 1 NORTH PARK NO. 1
A PART OF THE SE 1/4 OF SEC. 16, TEN. RTW. SLSBM